

FACADES

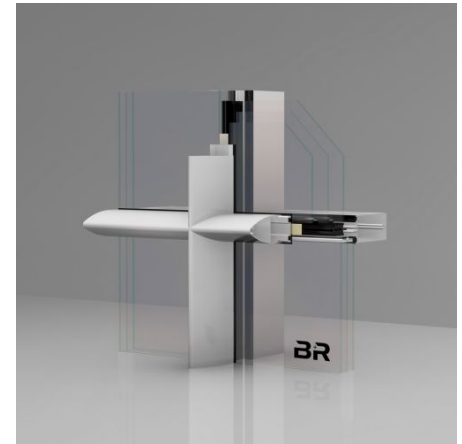
RIVA FWS 60.SI

Passive house suitable mullion-transom facade offers versatile possibilities. Based on the new standard of insulation technology, the RIVA FWS 60.SI (Super Insulated) aluminum facade system offers super-insulated solutions for implementation of versatile facades and skylights in cover cap look on the passive house level. Ideal assembly and manufacturing processes are included.

The facade system with a 60 mm face width offers impressive design options and a comprehensive system range for a wide variety of functional and creative applications in upscale residential and commercial construction.

A profile-integrated, transparent system solution for spandrel barriers blends seamlessly into the exterior facade view. The required fall safety for floor-to-ceiling opening units and low spandrel heights is realized with an uninterrupted profile course and a uniform profile face width.

An extensive selection of cover caps and different depths offer additional options for design and construction of attractive building envelopes.


Product information:

- Passive house suitable mullion/transom facade
- Standard of the insulation technology
- Facade system with 60 mm face width

DESIGN SPECIFICATIONS

Face width	60 mm
Surface	powder, anodizing, varnish
Overall system depth min. - max.	6 - 255 mm

TECHNICAL SPECIFICATIONS

Fall prevention	yes
National technical approval	yes
Sill safeguard	integrated, superimposed, placed in front
Profile-integrated sill safeguard	yes

SUSTAINABILITY

Passive house	yes
Recyclable	yes
Uf-value frame ?	0,67 W/(m ² ·K)
Wind load resistance	2,0/3,0 [kN/m ²]

FUNCTIONS

Bullet resistance	up to FB4
Break-in resistance	up to RC 3
Earthquake resistance	yes
Glass/fill weight max.	1080 kg

