

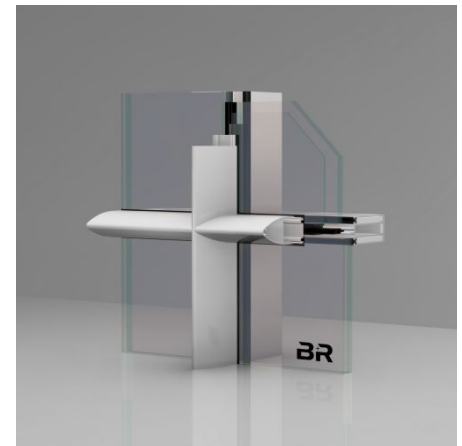
FACADES

RIVA FW 60+ BF

Mullion-transom fire-resistant facades with fire resistance class F30 and G30. Fire-resistant facades of fire resistance classes F30, G30, and for use as EI60 and EW60 fire-resistant facades cannot be distinguished visually from conventional metal construction mullion-transom facades. As metalworkers and processors of fire safety facades we have the technical expertise necessary for manufacturing and assembling fire protection closures. Fire-resistant facades have an inserted non-flammable insulating strip, as well as insulating layer strips in the rebate area.

This means that fire-resistant facades can be combined on any transitions with conventional mullion-transom facades and they offer maximum design freedom for architects. In this regard the curtain wall facades achieve a maximum story height of 5000 mm and offer additional utilization possibilities through integration of fire windows and fire doors.

The RIVA fire-resistant facade has a narrow circumferential profile face width in segmented construction. There is no visible difference to conventional mullion-transom facades and the fire-resistant facade maintains high an insulating capacity with triple insulating glass.



Product information:

- Suitable for use on vertical facades, polygon facades, and skylights
- Fire-prevention sections as exterior wall and roof areas in EW 30 in accordance with 13501-2
- Fire-prevention sections as exterior wall in EW 60 in accordance with EN 13501-2

DESIGN SPECIFICATIONS	
Face width	60 mm
Overall system depth min. - max.	105 mm

TECHNICAL SPECIFICATIONS	
National technical approval	upon request
CE mark	yes
Glass/panel thickness min. - max.	13 - 52 mm
Air permeability	AE

SUSTAINABILITY	
Uf-value frame ?	1,1 W/(m ² ·K)

FUNCTIONS	
Fire protection	F30, G30, EI30, EW30
Break-in resistance	up to RC 2
Weight max.	288 kg
Security system	yes



We are experts in designing, manufacturing and installing complex facades.

