

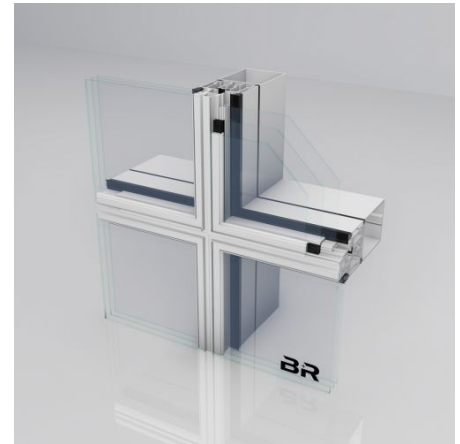
**FACADES**

**RIVA SFC 85 SG.HI**

Frameless structural glazing facades in an all-glass look. To enable architects' visions that exclude a bearing construction of steel or aluminum in the structural glass design, BENEDICT + RIVA offers the possibility of a frameless glass facade in an all-glass look and maximum transparency. With this type of structural glazing facade, steel or aluminum mullions are dispensed with entirely.

For the structural glazing facade, self-supporting transparent glass bracing elements are used as vertical mullions, so-called glass struts with extremely narrow cross sections and high rigidity from floor to ceiling. This offers incredible freedom for architects and planners. The structural glazing facade is suitable for use in polygon and vertical facades and can be combined with the bullet resistance and break-in resistance offerings from BENEDICT + RIVA.

The threaded fitting of the all-glass facade is located on the edge composite of the pane and is invisible from the outside. The bearing construction of vertical glass struts produces a filigree look.



**Product information:**

- Individual design through a large selection of profile geometries for the bearing construction
- Glass loads up to 6 kN in standard design are possible
- Bullet resistance and break-in resistance possible

DESIGN SPECIFICATIONS	
Face width	85 mm
Element width max.	2700 mm
Element height max.	3600 mm
Surface	powder, anodizing, varnish

TECHNICAL SPECIFICATIONS	
National technical approval	upon request
CE mark	yes
Drainage	yes
European technical assessment	yes

SUSTAINABILITY	
Uf-value frame ?	2,1 W/(m <sup>2</sup> ·K)
Wind load resistance	class C2/B2

FUNCTIONS	
Weight max.	480 kg

