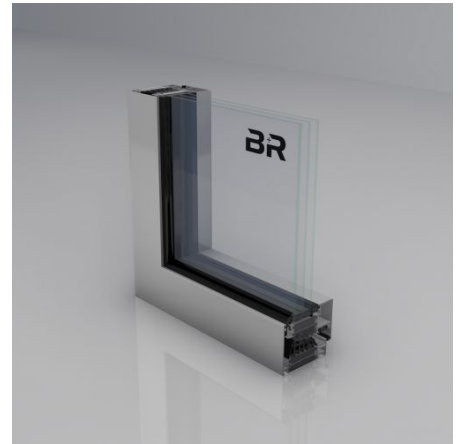


WINDOWS

RIVA AWS 90 BS.SI+

Super-insulated block windows on the passive house level. With its thermal insulation the RIVA AWS 90 BS.SI+ (Block System Super Insulated) block window is on the passive house level. With a U_f value of $0.96 \text{ W}/(\text{m}^2 \cdot \text{K})$ and narrow face widths, particularly harmonious glazing sight lines without visible window casements can be realized using the RIVA AWS 90 PD BS.SI block windows. The block windows from BENEDICT + RIVA are suitable for the rigorous requirements in upscale apartment, commercial, and residential constructions and allow large-dimensioned casements. Energy efficiency and modern design come together.



Product information:

- Suitable for use in private apartment and home construction, as well as in commercial buildings
- RIVA AWS 90 BS.SI+ block window series with thermal insulation on the passive house level
- Center gasket in co-extrusion

DESIGN SPECIFICATIONS

Face width	77 mm
Face width window frame min. - max.	77 mm
Face width casement frame min. max.	0 mm
Face width mullion min. - max.	107 - 202 mm

TECHNICAL SPECIFICATIONS

Fall prevention	yes
Barrier-free operating force as specified in DIN 1840	yes
Operating forces	class 1
CE mark	yes

SUSTAINABILITY

Corrosion protection class	class 5
Uf-value frame ?	$0,96 \text{ W}/(\text{m}^2 \cdot \text{K})$
Wind load resistance	class C4/B4
Certificates	cradle2cradle SILVER

FUNCTIONS

Break-in resistance	up to RC 3
Opening type to the inside	turn / tilt, side-hung, bottom-hung, double-vent turn / tilt / side-hung, Double-vent side-hung / side-hung, tilt / slide, toplight, tilt-before-turn
Opening angle	180°
Max. sound insulation R _{wP}	49 dB(A)



We are experts in designing, manufacturing and installing complex facades.

