

## WINDOWS

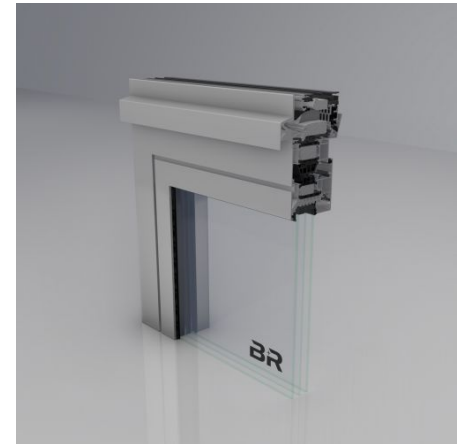
RIVA VENTOFRAME  
ASONIC

## BENEDICT + RIVA's Decentralized Ventilator Offers Versatile Solutions for Efficient Planning, Ideal Soundproofing and an Excellent Indoor Climate

Large Selection of Models for Adapting to Individual Needs — The Air and Comfort models both allow efficient adaptation of the new ventilation system to meet individual building requirements.

**Air:** This ventilation solution is suitable for restoration, renovation, and new buildings and uses natural airflow to create a cozy and healthy indoor climate. The system is optimized for transverse ventilation enabling easy application in all kinds of building projects.

**Comfort:** The self-regulating internal valve with its non-return function and optimized soundproofing makes this model a real winner. At the same time, it can improve energy efficiency using an integrated air extraction system.



## Product information:

- Versatile planning options using the Air and Comfort models
- Highly predictable costs and economical installation due to contract deliveries
- Soundproof ventilation with ideal waterproofing even in extreme weather conditions

## DESIGN SPECIFICATIONS

Face width	450 - 6000 mm
Casement frame overall depth	50 - 202 mm
Window fittings concealed	yes
Element width max.	6000 mm

## TECHNICAL SPECIFICATIONS

National technical approval	yes
CE mark	yes
Verification of permanent functionality	class 3
Drainage	yes

## SUSTAINABILITY

Usage limit temperature	up to -20°C
Corrosion protection class	class 5
Corrosion category for profiles	up to C5H
Leakage at 50 Pa	< 15% (closed)

## FUNCTIONS

Automatic	yes
Mode of operation	mechanical
Characteristics	integrated ventilation with sound insulation
Earthquake resistance	yes

