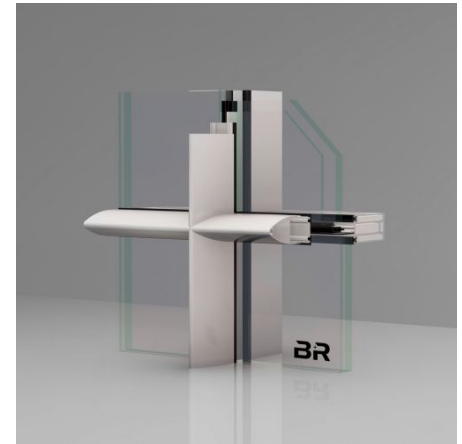


FACADES**RIVA FW 50+ FR 60**

Mullion-transom fire-resistant facades with fire resistance class F30 and G30. Fire-resistant facades of fire resistance classes F30, G30, and for use as EI60 and EW60 fire-resistant facades cannot be distinguished visually from conventional metal construction mullion/transom facades. As metalworkers and processors of fire safety facades we have the technical expertise necessary for manufacturing and assembling fire protection closures. Fire-resistant facades have an inserted non-flammable insulating strip, as well as insulating layer strips in the rebate area.

This means that fire-resistant facades can be combined on any transitions with conventional mullion/transom facades and they offer maximum design freedom for architects. In this regard the curtain wall facades achieve a maximum story height of 5000 mm and offer additional utilization possibilities through integration of fire windows and fire doors.

The RIVA fire-resistant facade has a narrow circumferential profile face width in segmented construction. There is no visible difference to conventional mullion/transom facades and the fire-resistant facade maintains high a insulating capacity with triple insulating glass.

**Product information:**

- Suitable for use on vertical facades, polygon facades, and skylights
- Fire-prevention sections as exterior wall and roof areas in EW 30 in accordance with 13501-2
- Fire-prevention sections as exterior wall in EW 60 in accordance with EN 13501-2

DESIGN SPECIFICATIONS

Face width 50 mm

Overall system depth min. - max. 105 mm

TECHNICAL SPECIFICATIONS

CE mark yes

Glass/panel thickness min. - max. 27 - 45 mm

Air permeability AE

Standards EN 13501-2, DIN EN 13830

SUSTAINABILITY

Uf-value frame ? 3 W/(m² ·K)

FUNCTIONS

Fire protection EI60, EW60

Break-in resistance up to RC 2

Weight max. 336 kg

Security system yes

