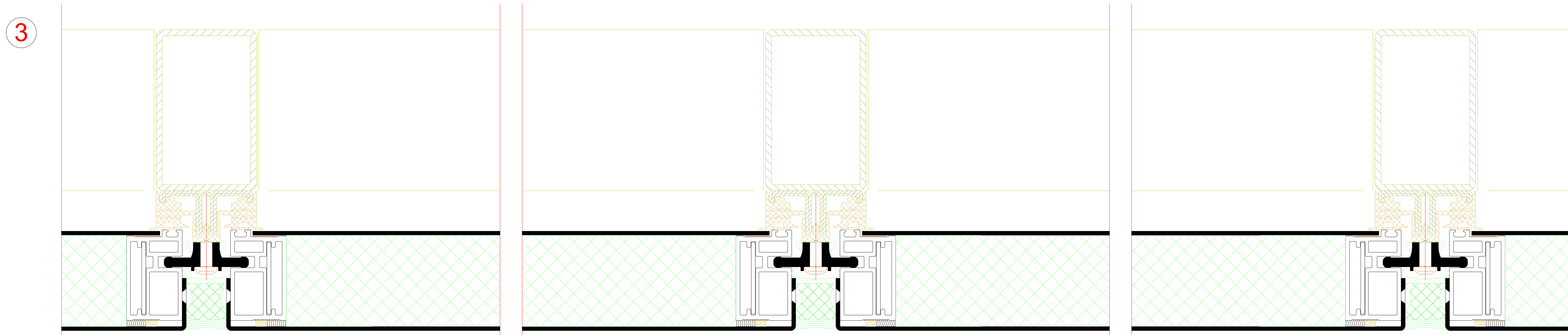
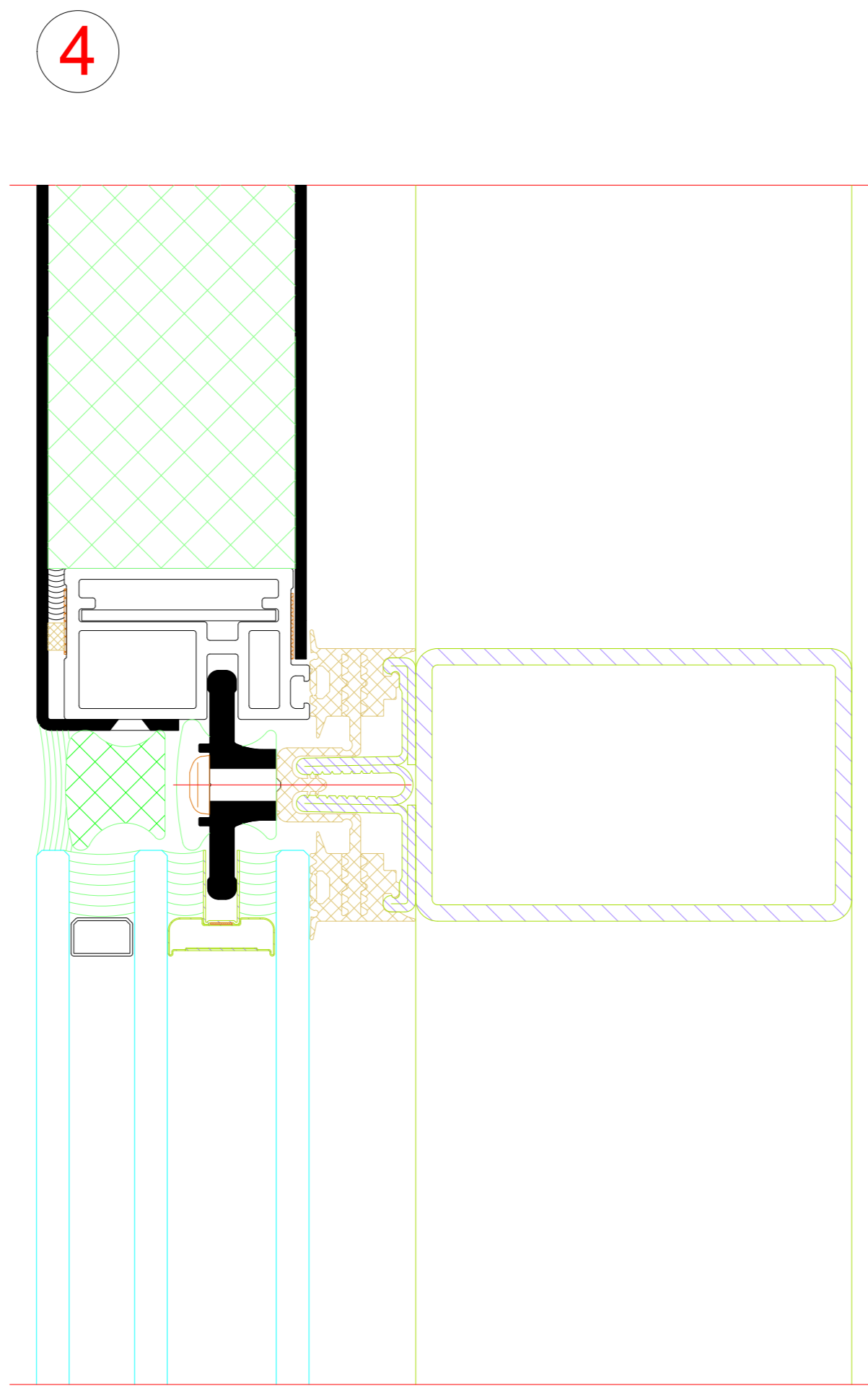
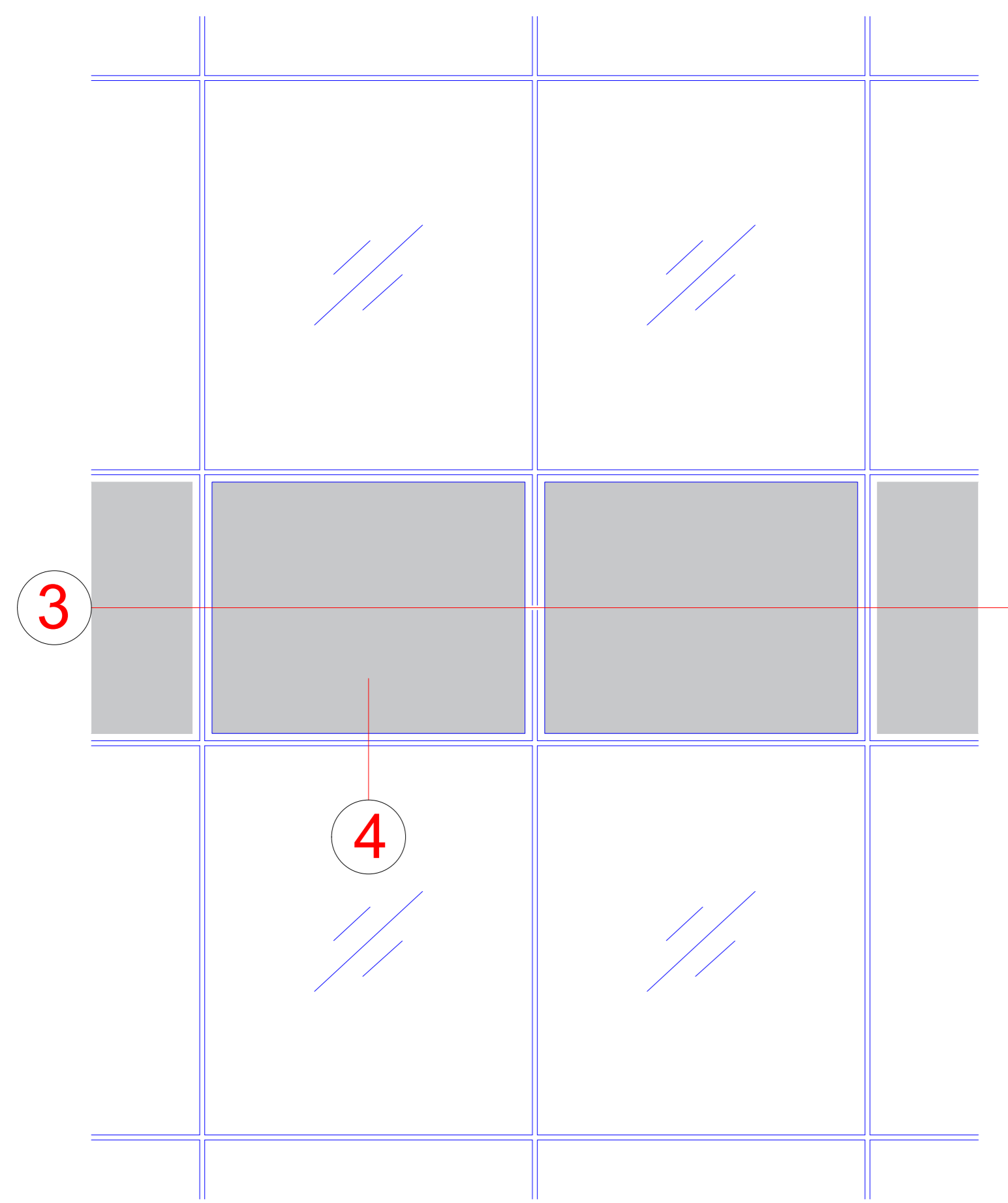
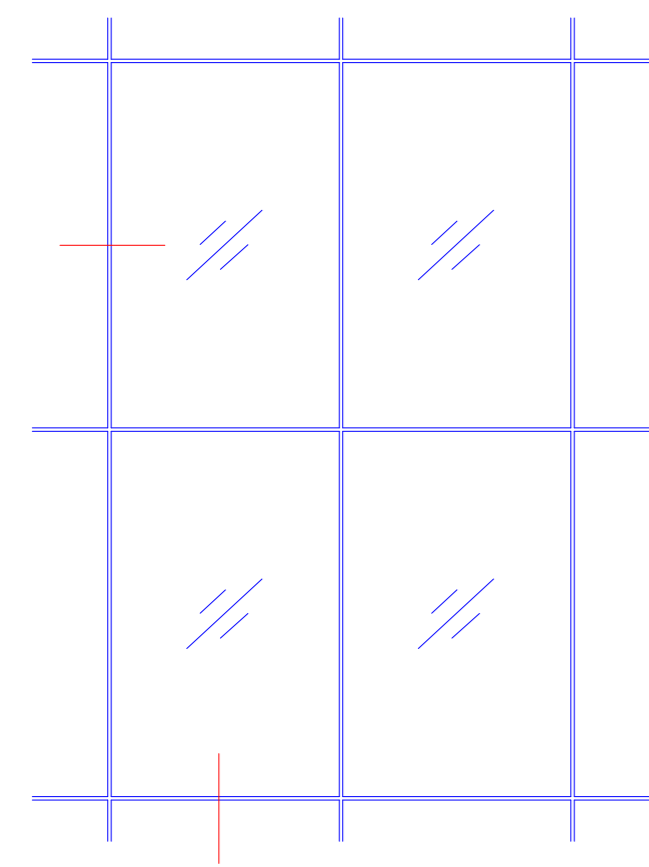


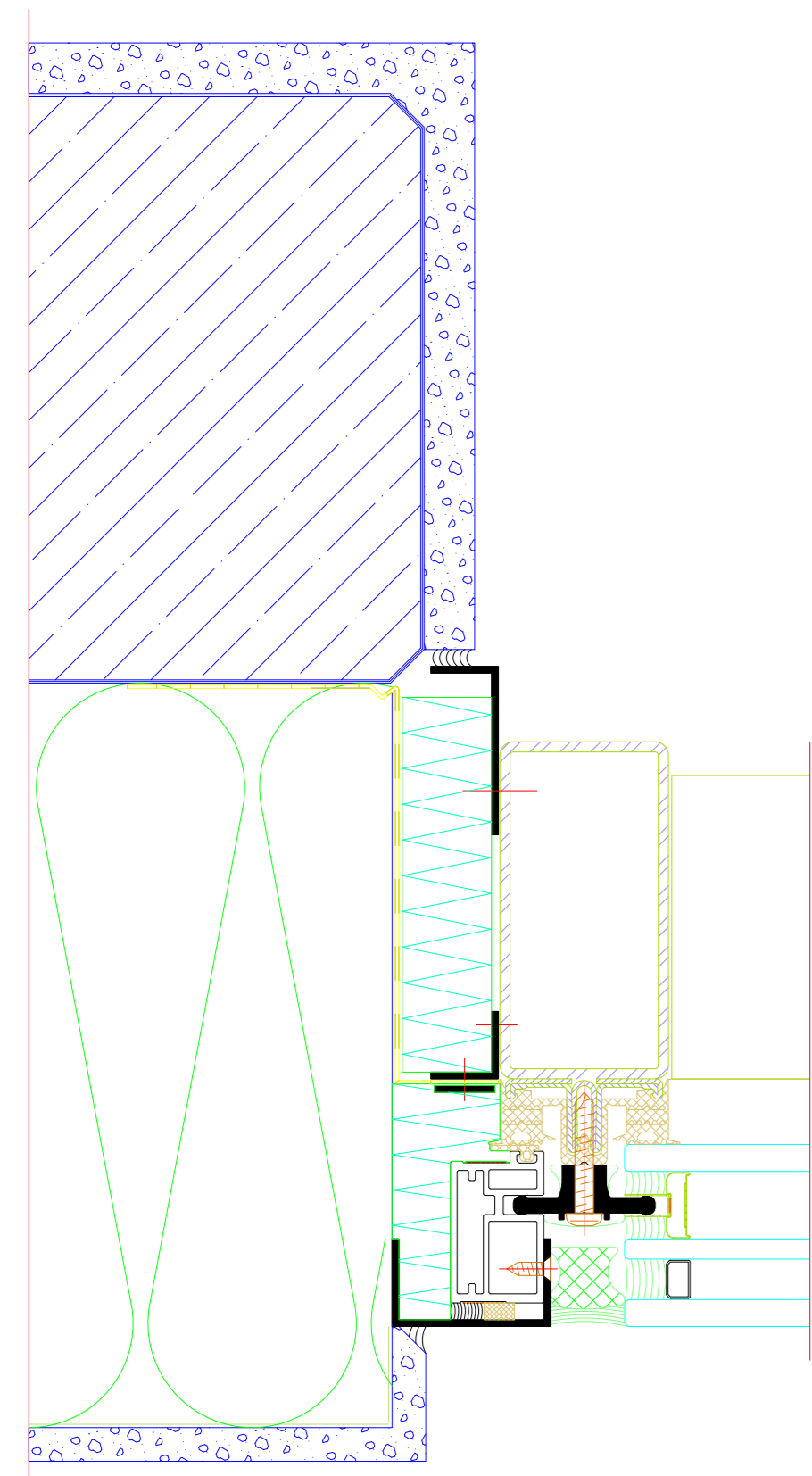
Brüstungspaneel
Spandrel panel





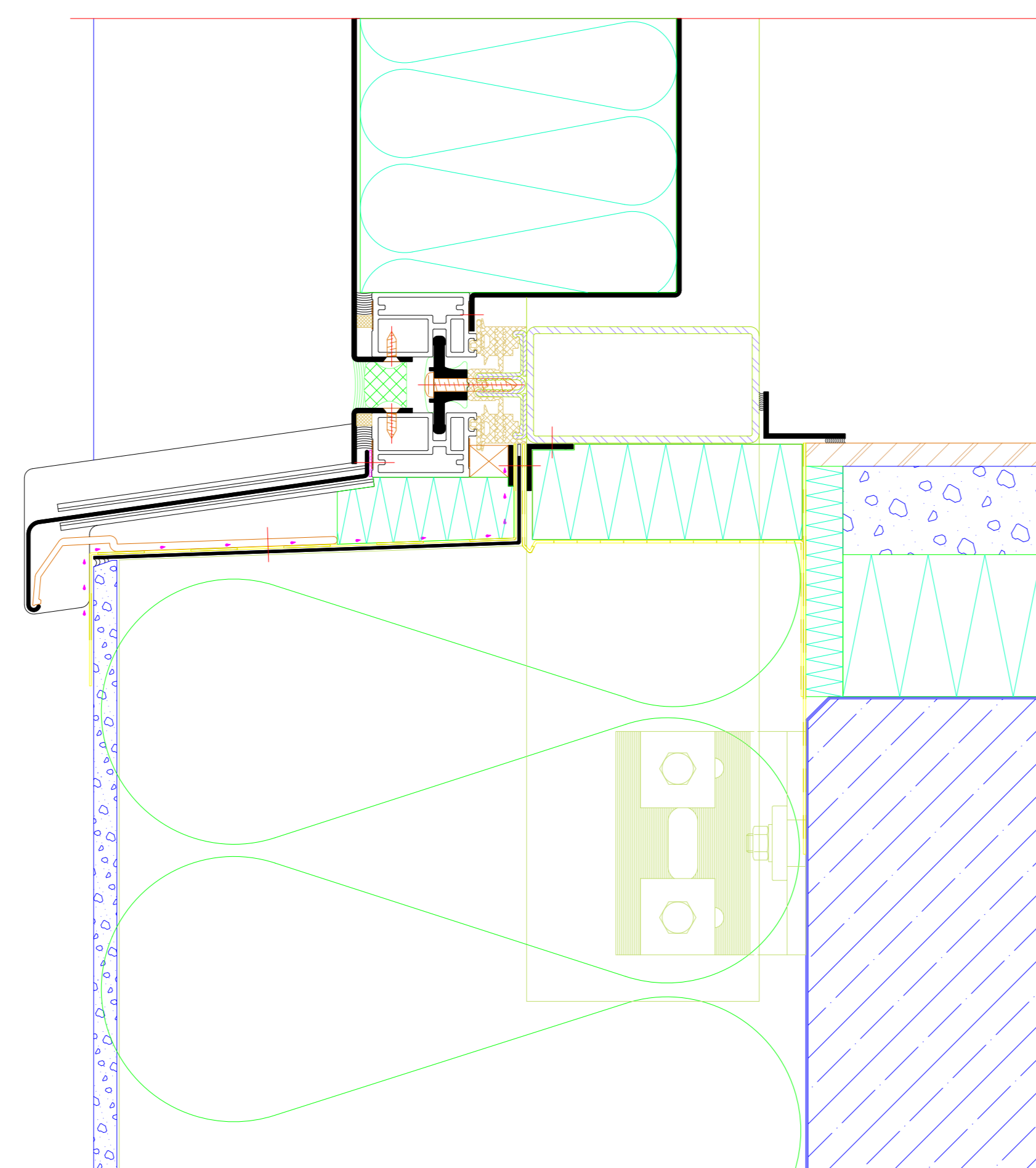
AOC 50 SG gezeichnet, AOC 60 SG sinnbildlich
 AOC 50 SG shown, similar principle for AOC 60 SG

seitlicher Anschluss
 Side attachment



M 1:2

Unterer Anschluss
 Bottom attachment



M 1:2

NO.	DATE	REVISION	REVISION	REVISION
1	01.10.2014	1	1	1
RIVA Baukörperanschlüsse Riva Attachments to building structure				
Fassade RIVA AOC 50 SG ST SI Facade RIVA AOC 50 SG ST SI				
BENEDICT + RIVA RIVA Attachments to building structure CH 8100 Lengen, Germany				