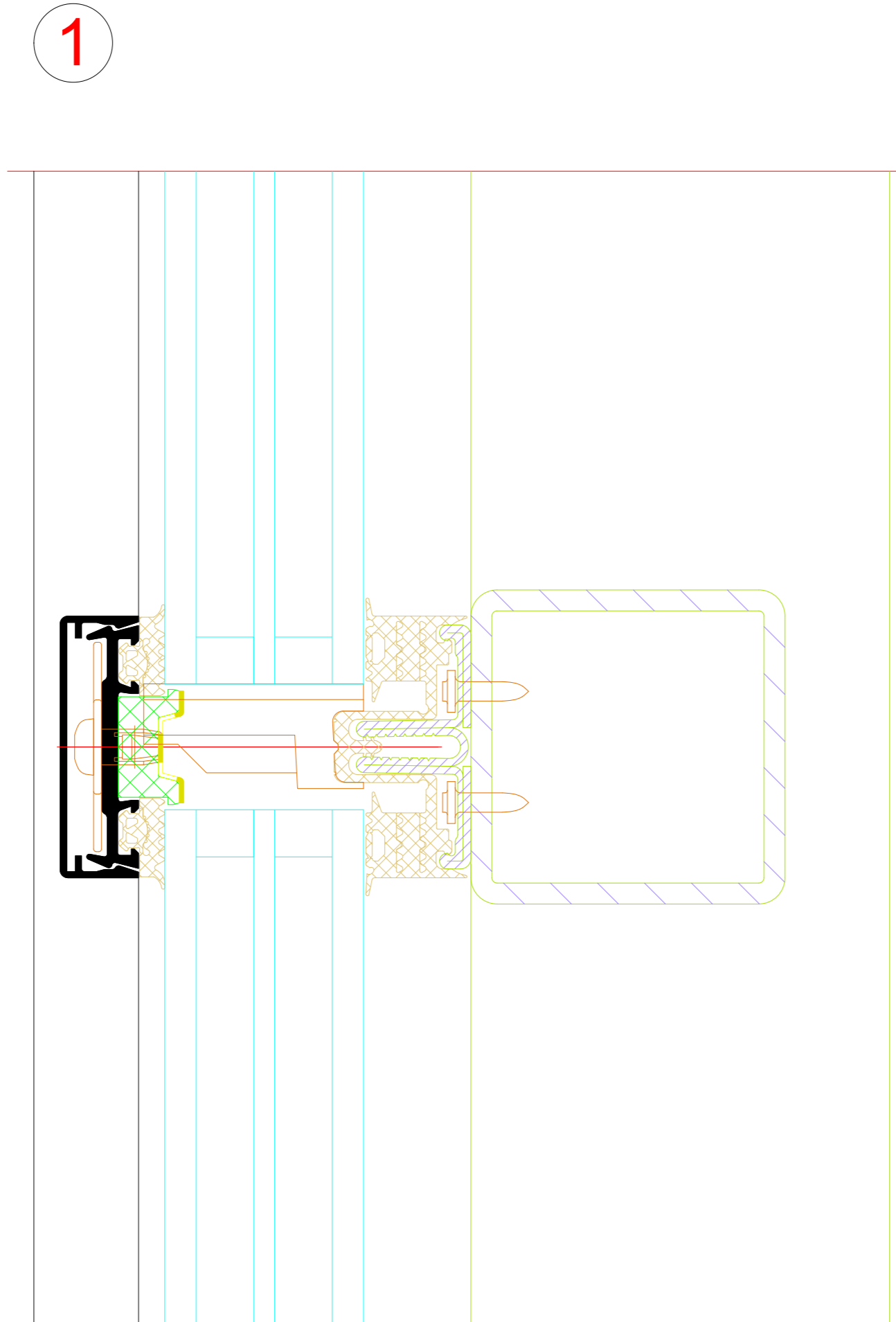
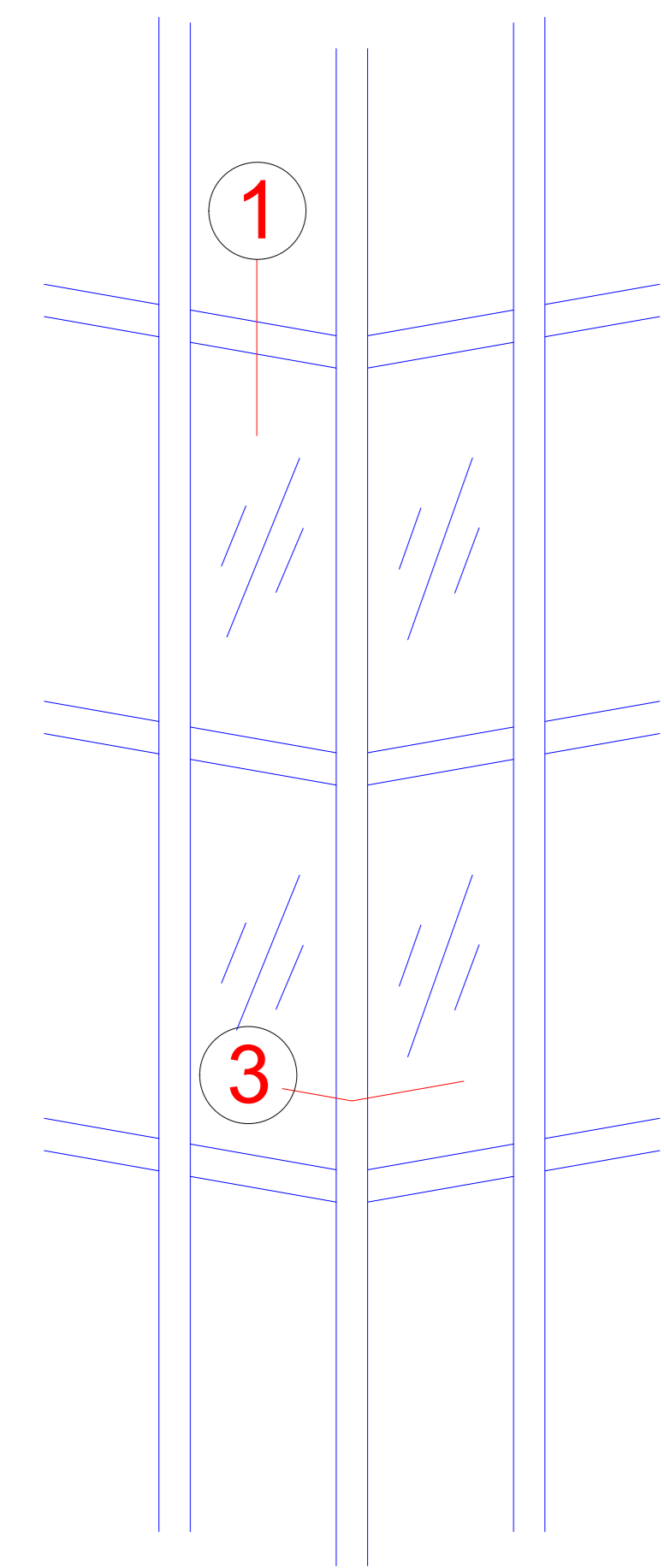
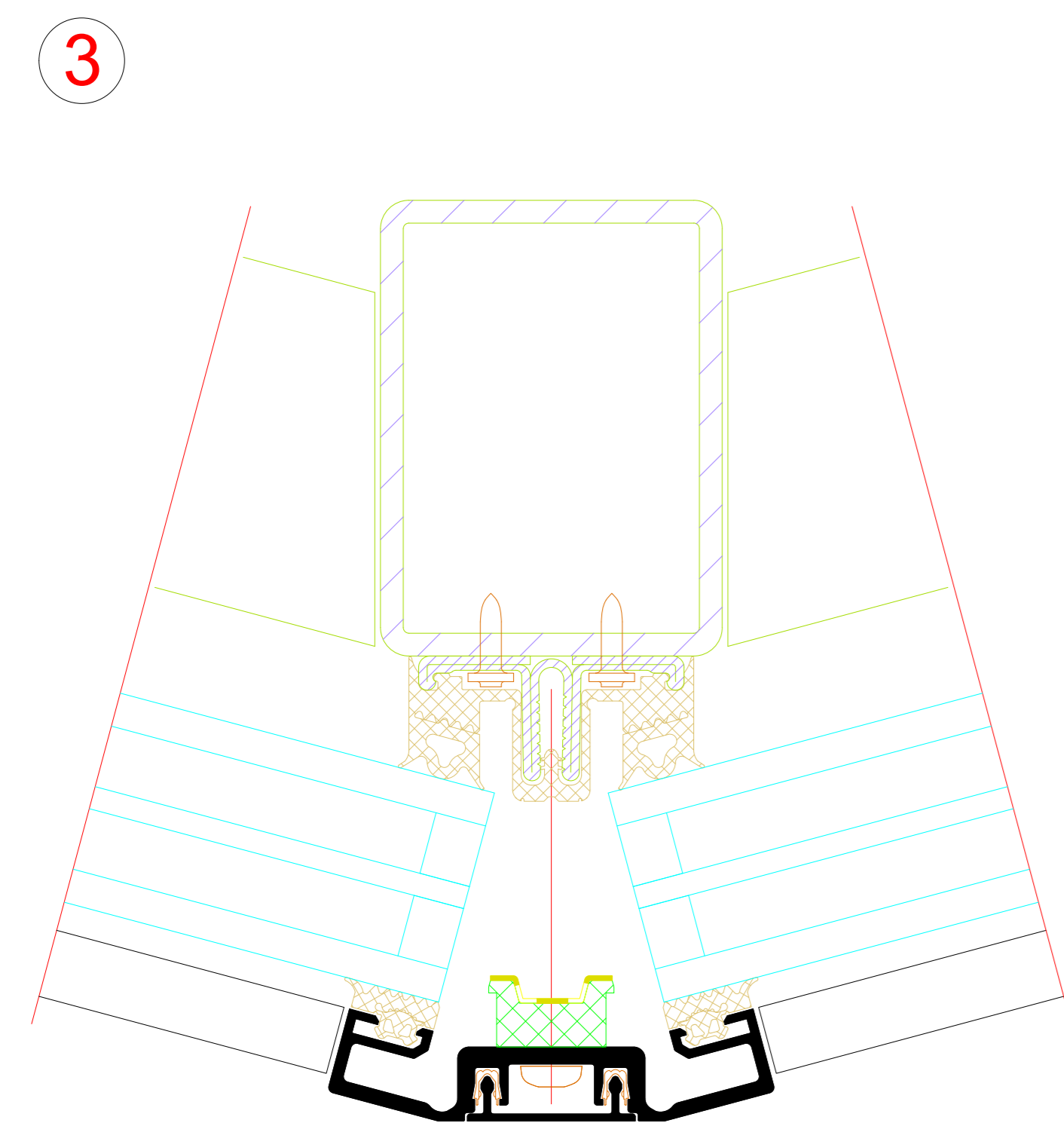


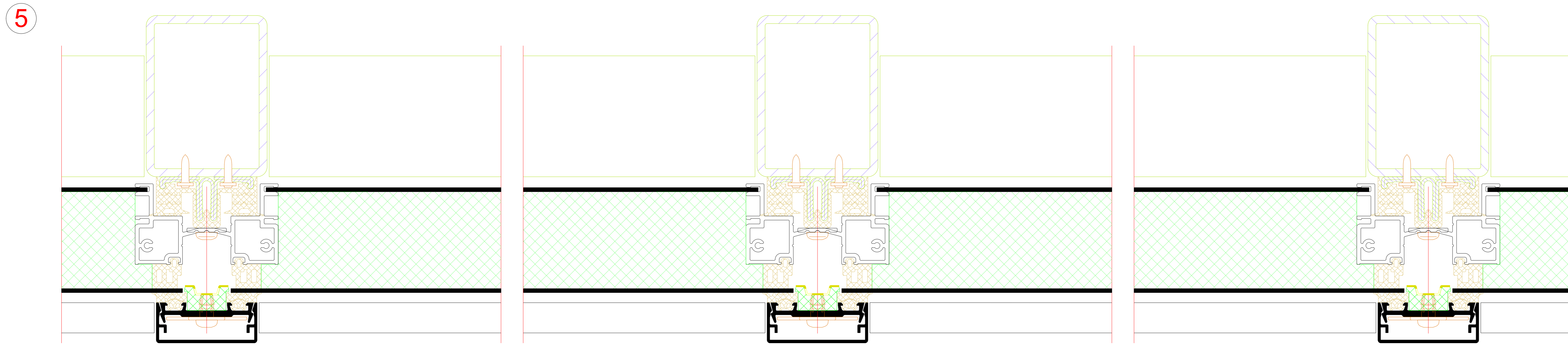
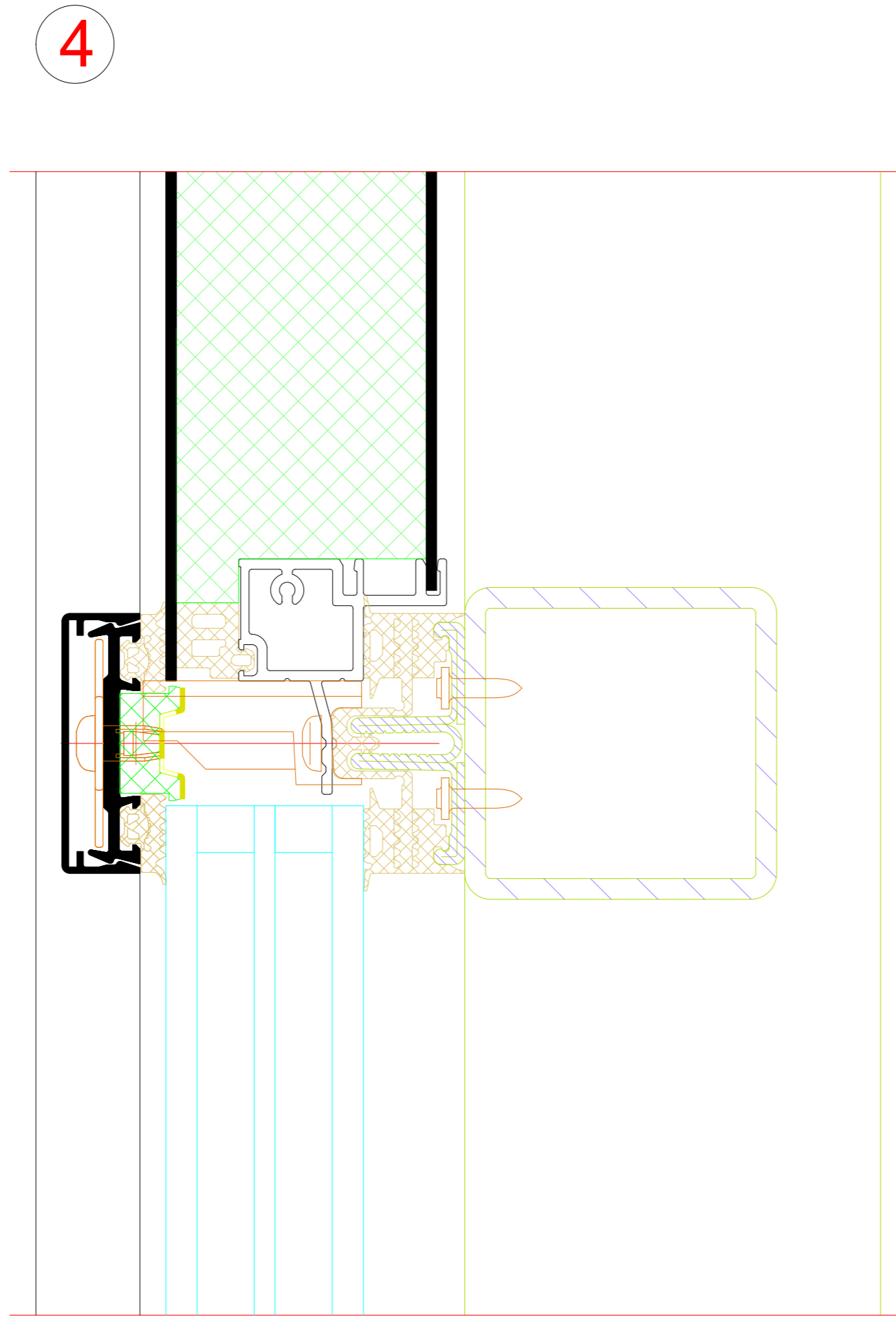
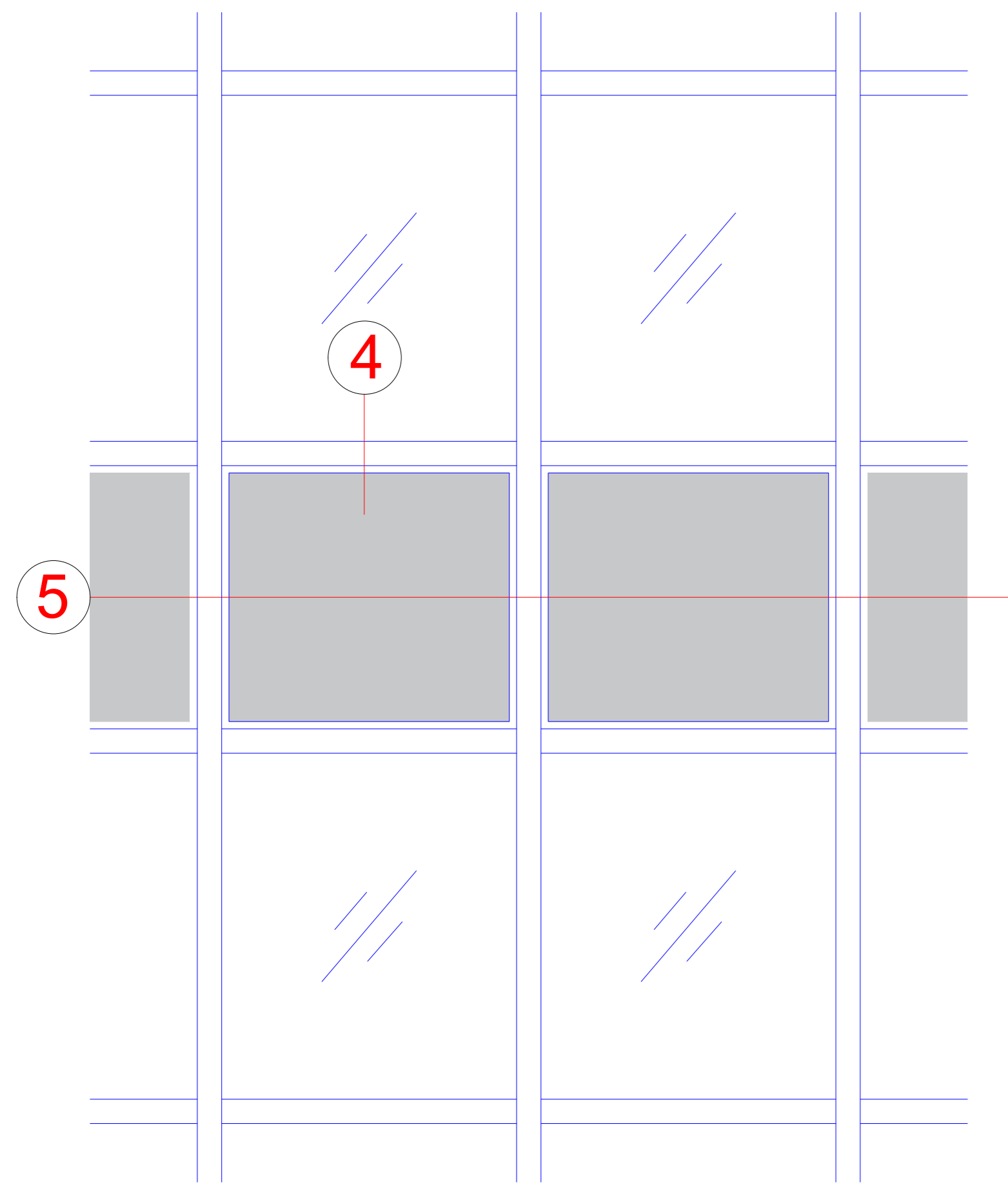
Variable Ecke
Variable Ecke



Aussenecke 10° - 20°
Aussenecke 10° - 20°

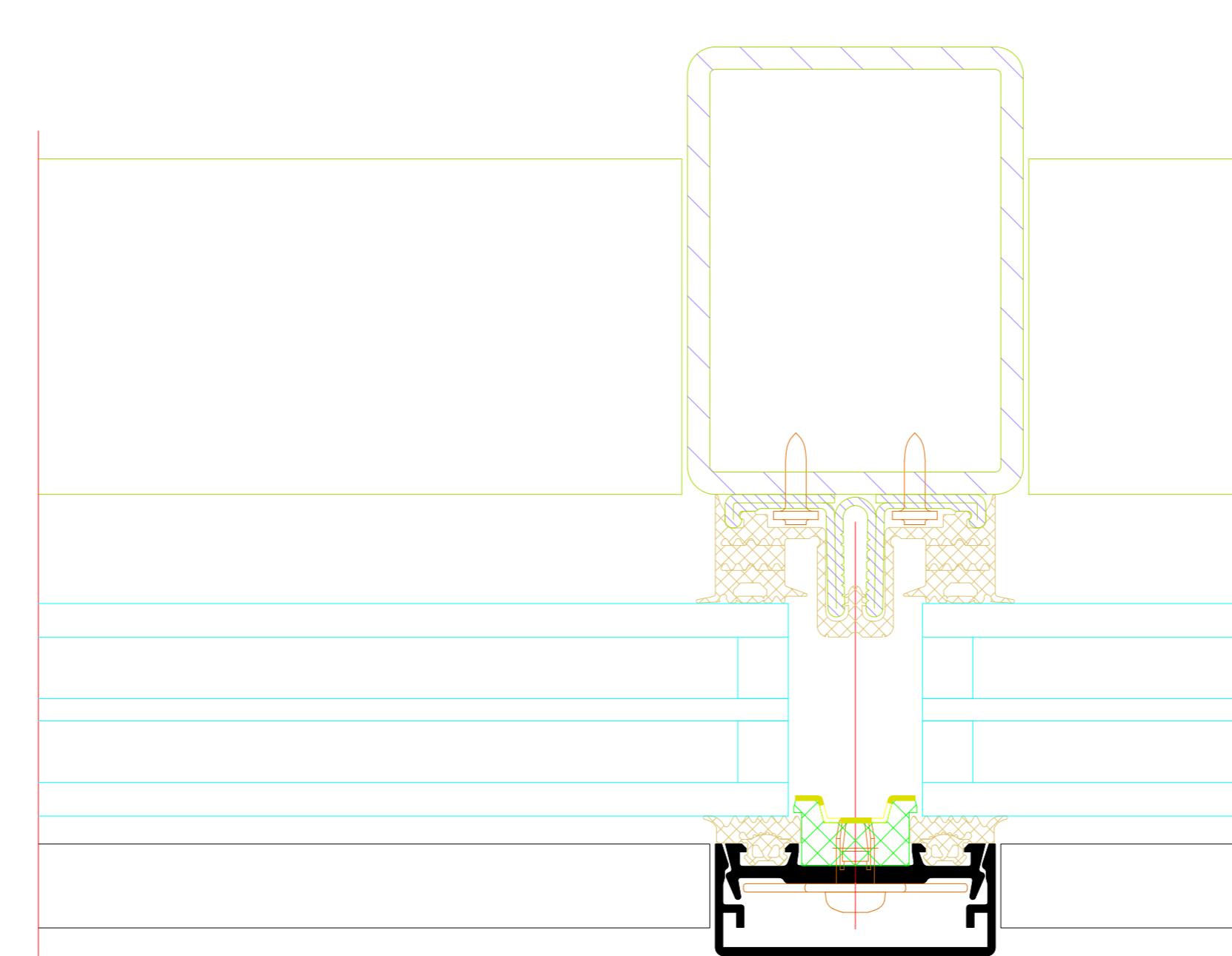
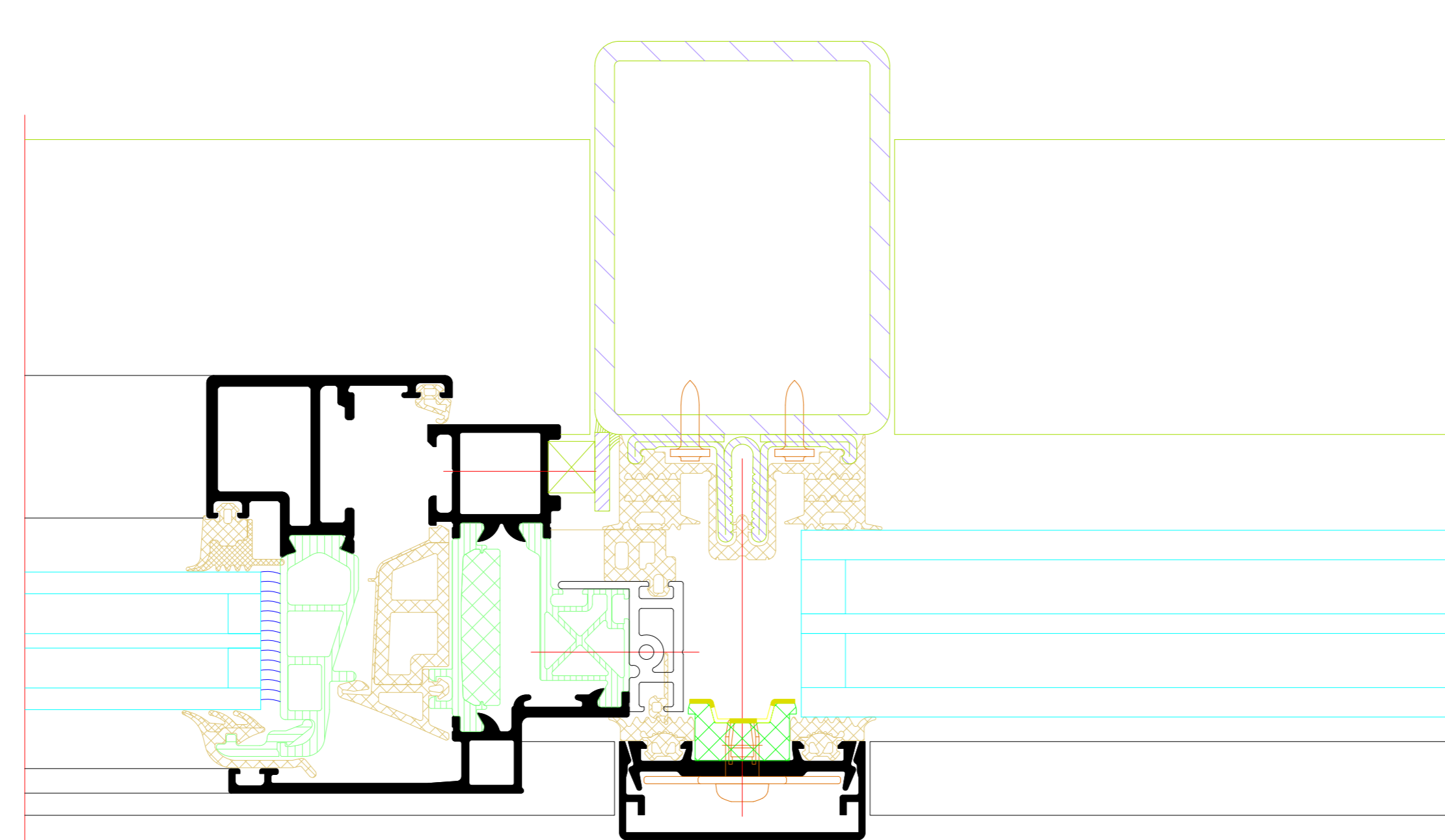
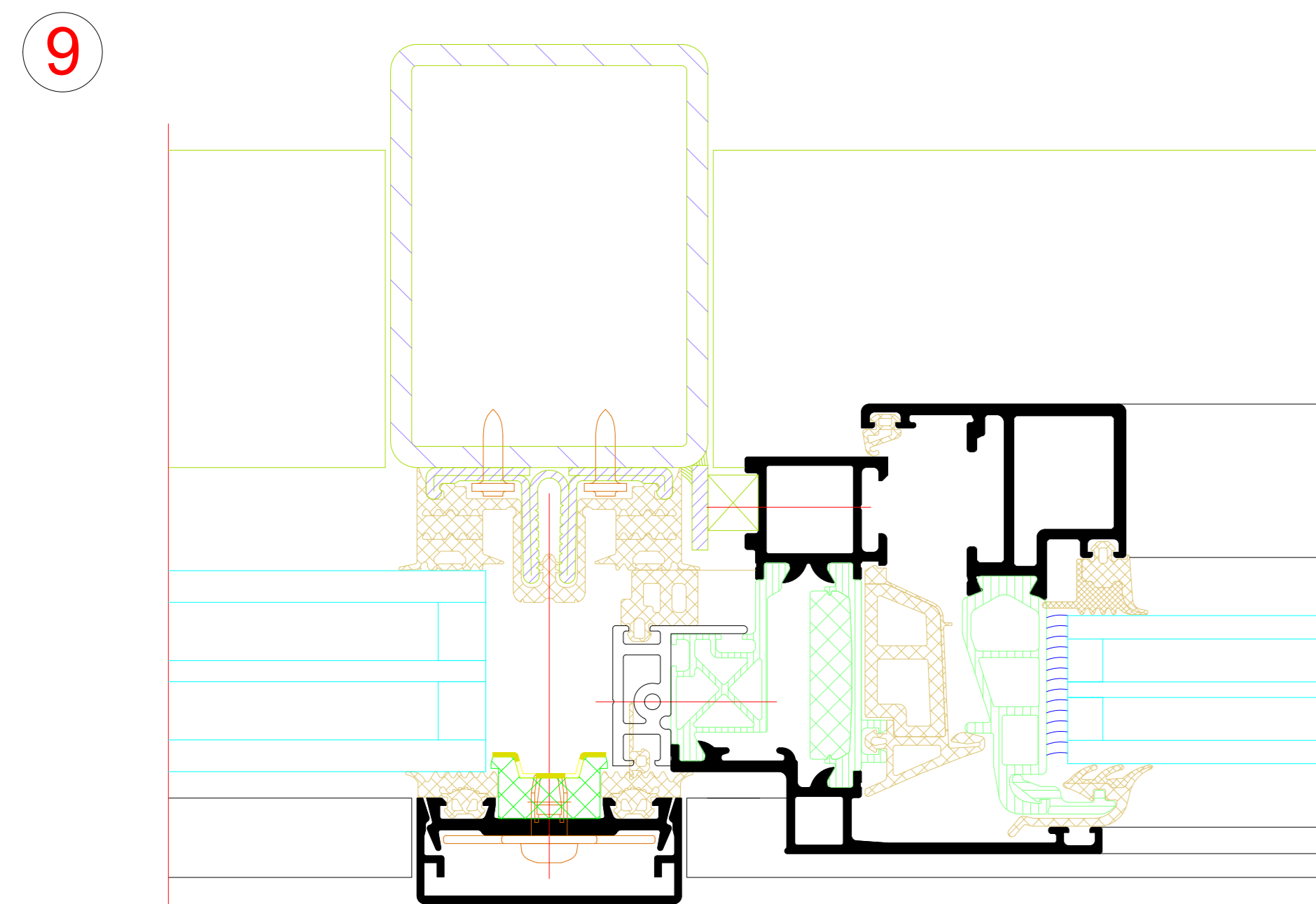
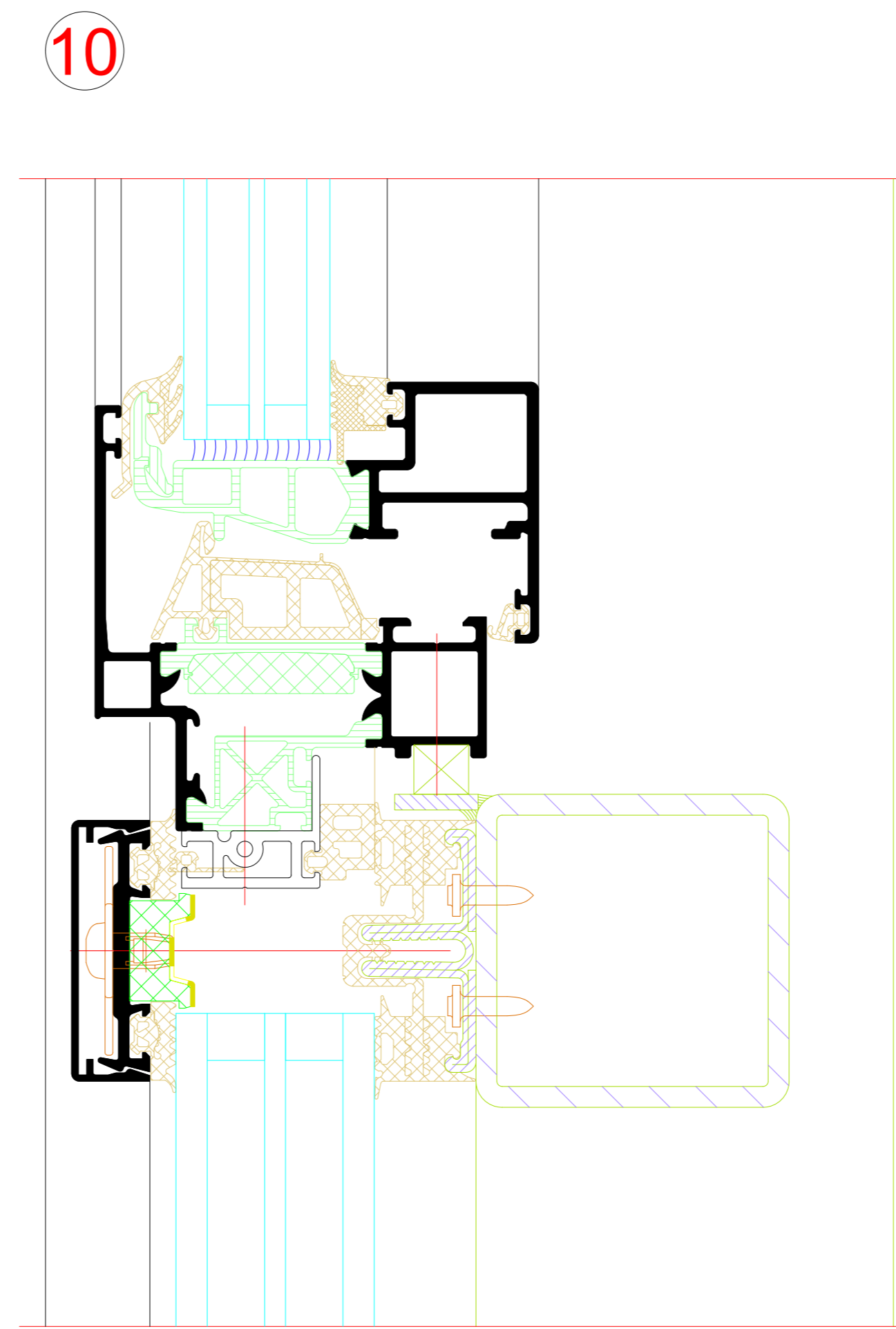
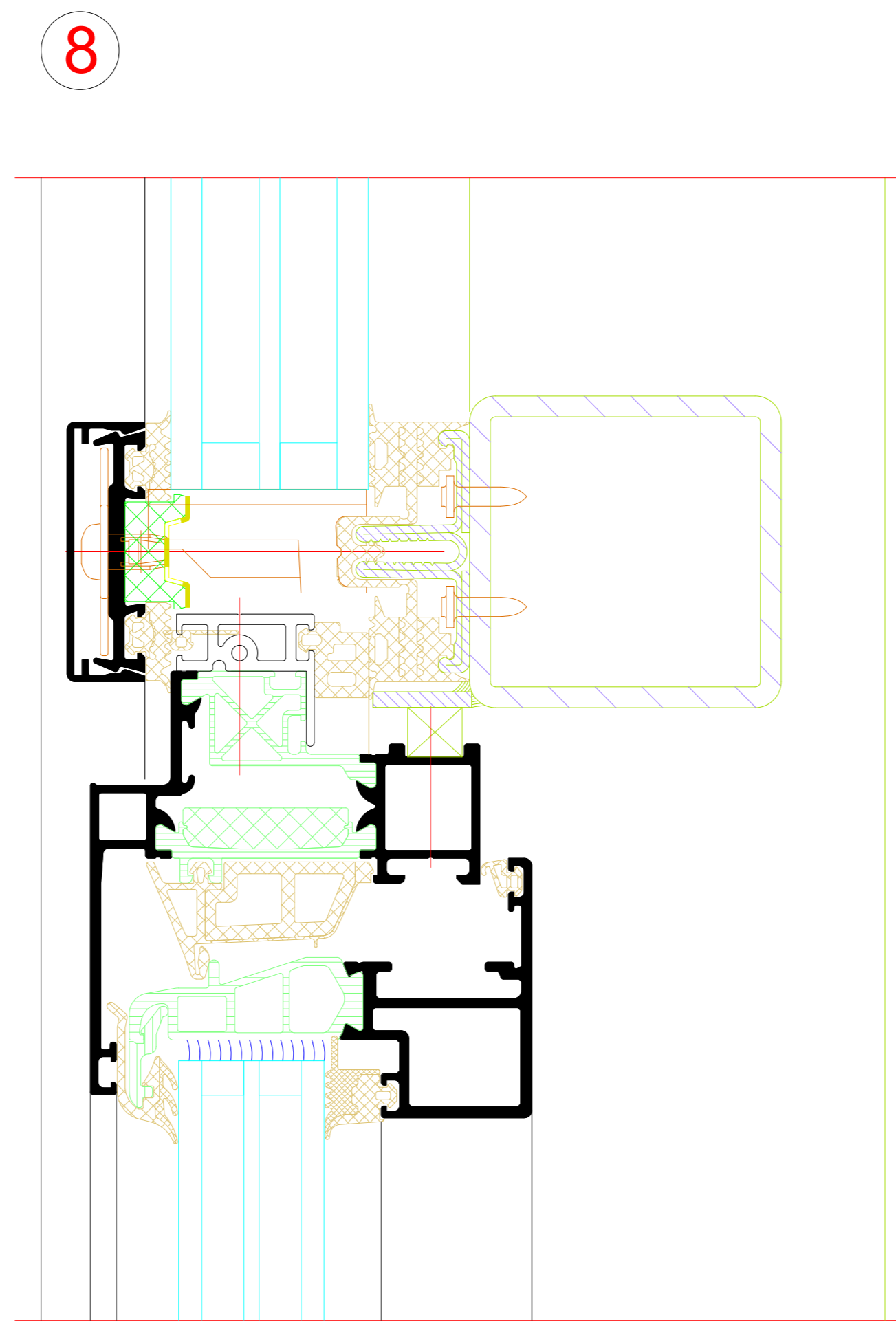
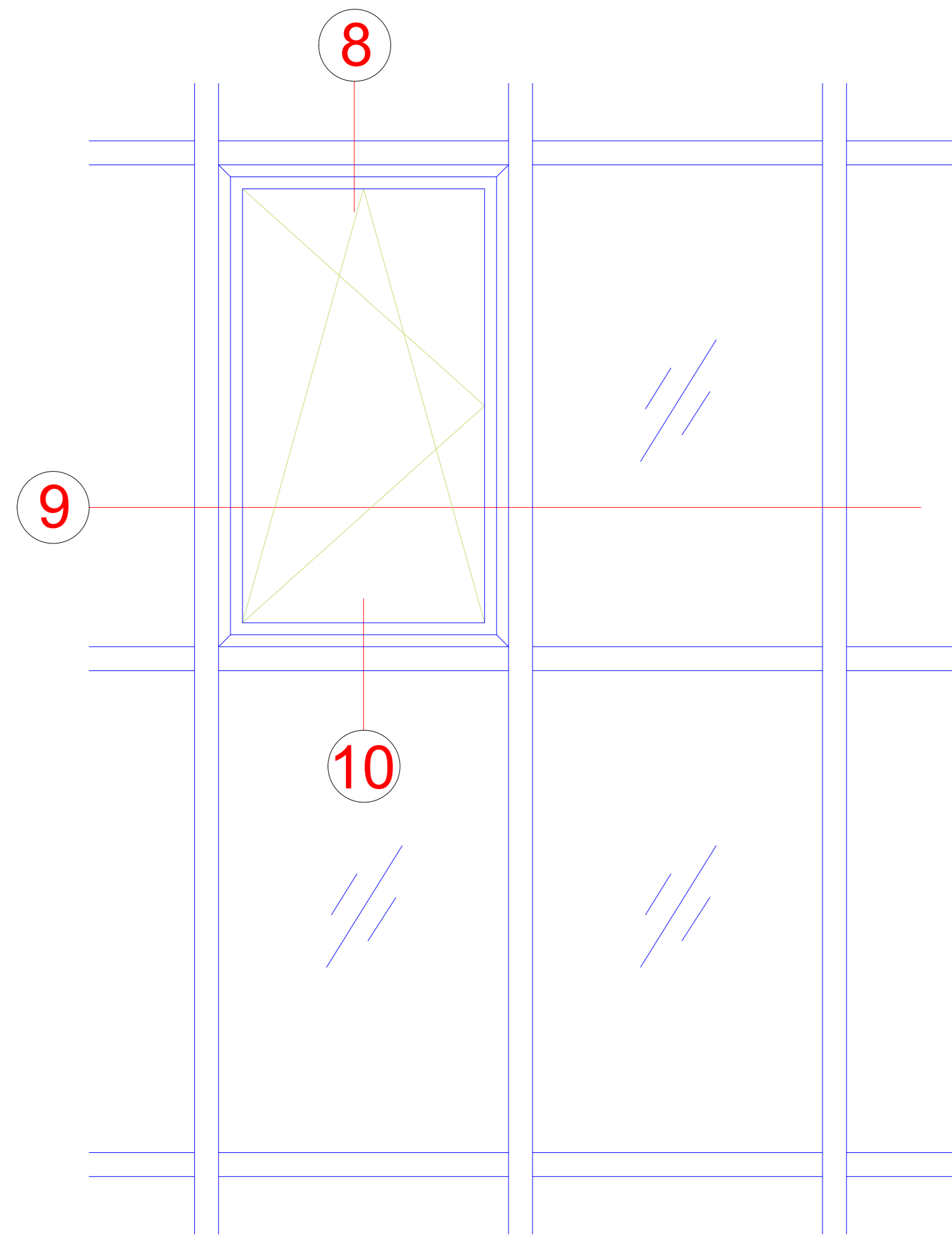


Brüstungspaneel
Brüstungspaneel



| NO. | DATE | DESCRIPTION | DESIGNED BY | CHECKED BY |
|---|------|----------------|-------------|------------|
| 001 | 2024 | Initial Design | J. Schmidt | M. Müller |
| 002 | 2024 | Final Design | J. Schmidt | M. Müller |
| Project Information Project Name: Riva Elementschleife Project Location: Riva Lift section details Project No.: Fassade RIVA AOC 50 ST H6 Project Date: Fassade RIVA AOC 50 ST H6 Project Status: In Progress | | | | |
| Company Information BENEDICT + RIVA RIVA GmbH Rivastraße 10 04209 Leipzig, Germany | | | | |

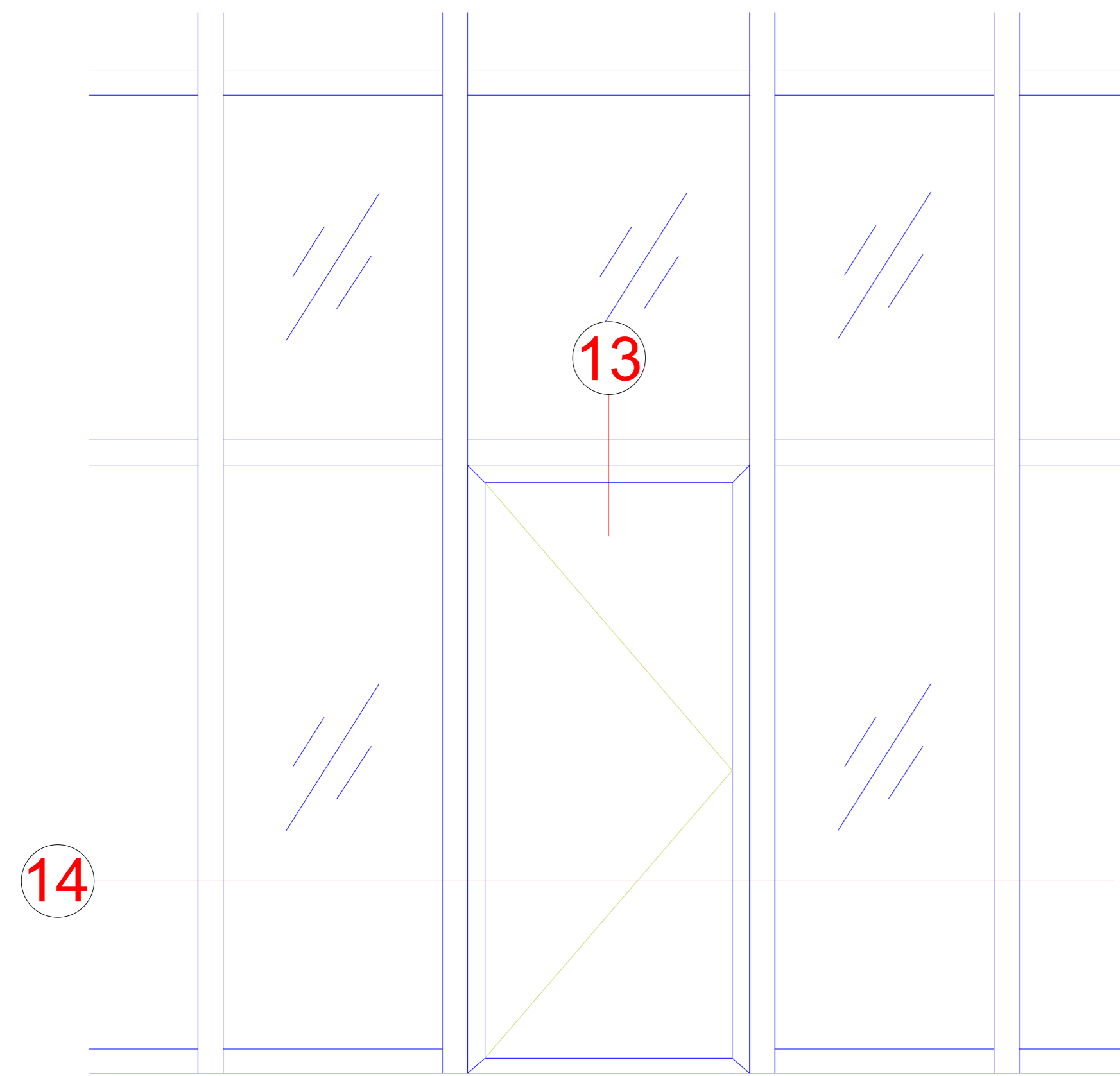
Einsatzelement AWS 75 BS.SI+
 Einsatzelement AWS 75 BS.SI+



| NO. | DATE | REVISION | DESCRIPTION | BY | CHECKED |
|-----|------------|----------|-----------------|-----|---------|
| 01 | 01.01.2023 | 01 | Initial release | ... | ... |
| 02 | 01.01.2023 | 02 | ... | ... | ... |
| 03 | 01.01.2023 | 03 | ... | ... | ... |

PROJECT: Facade RIVA ACC 50 ST H
 FACADE RIVA ACC 50 ST H
 PROJECT: ...
 DRAWN: ...
 CHECKED: ...
 APPROVED: ...
BENEDICT + RIVA

Einsatzelement AD UP 75
AD UP 75 insert unit



Technische Informationen AD UP 75

AD UP 75 technical information

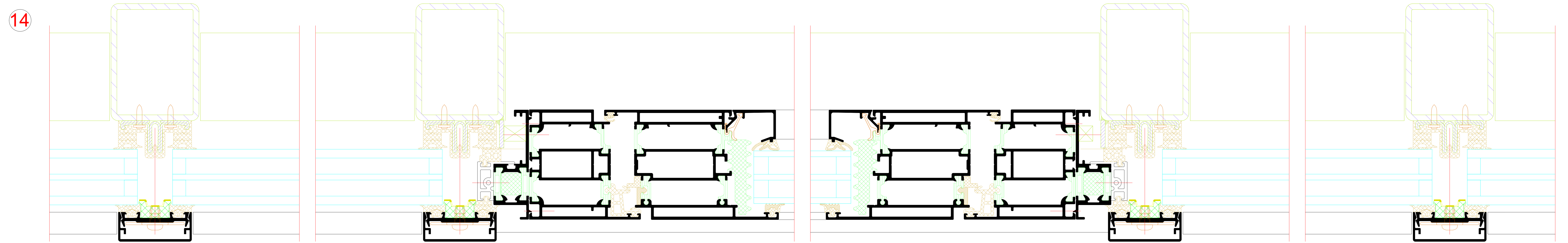
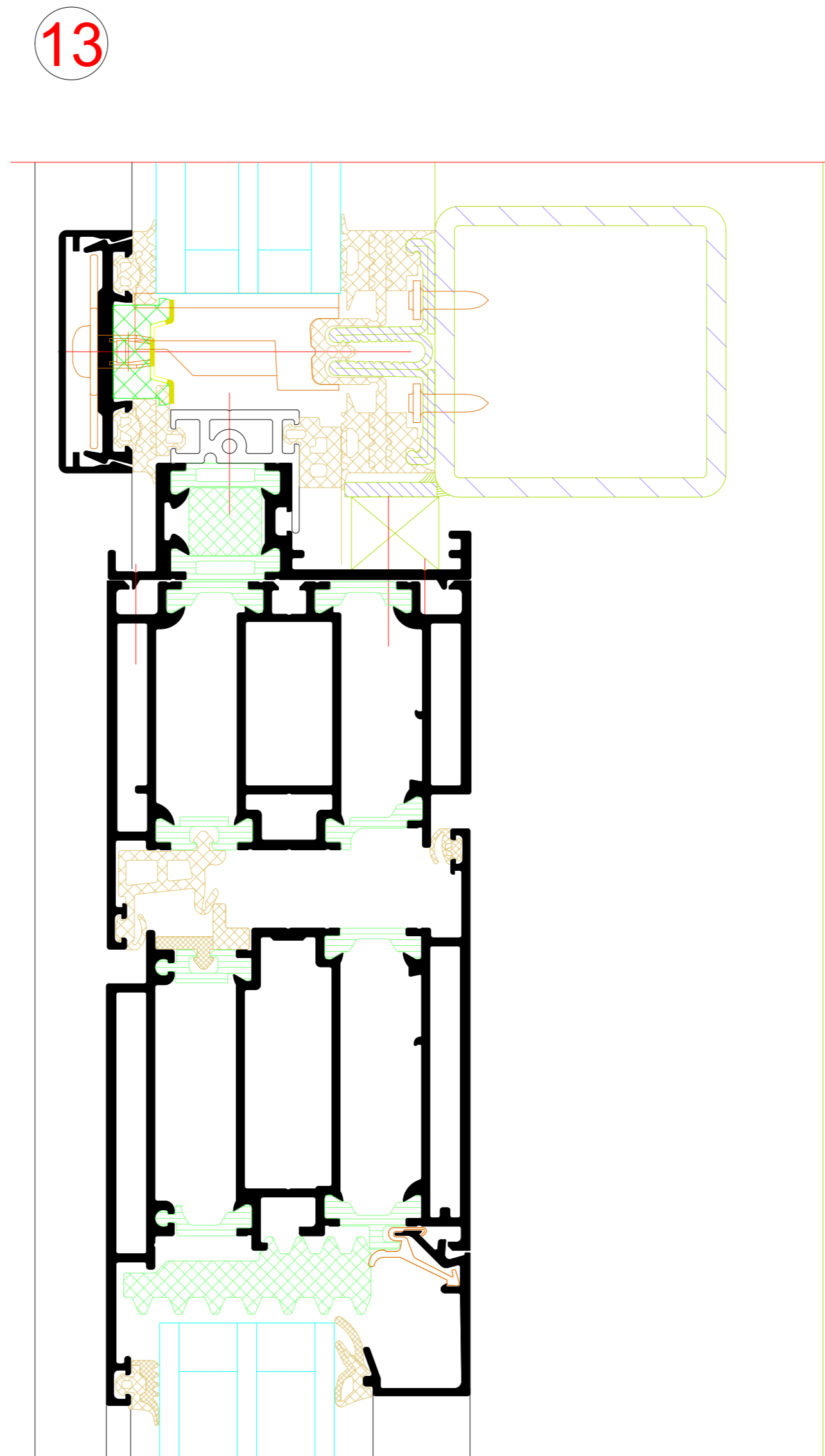
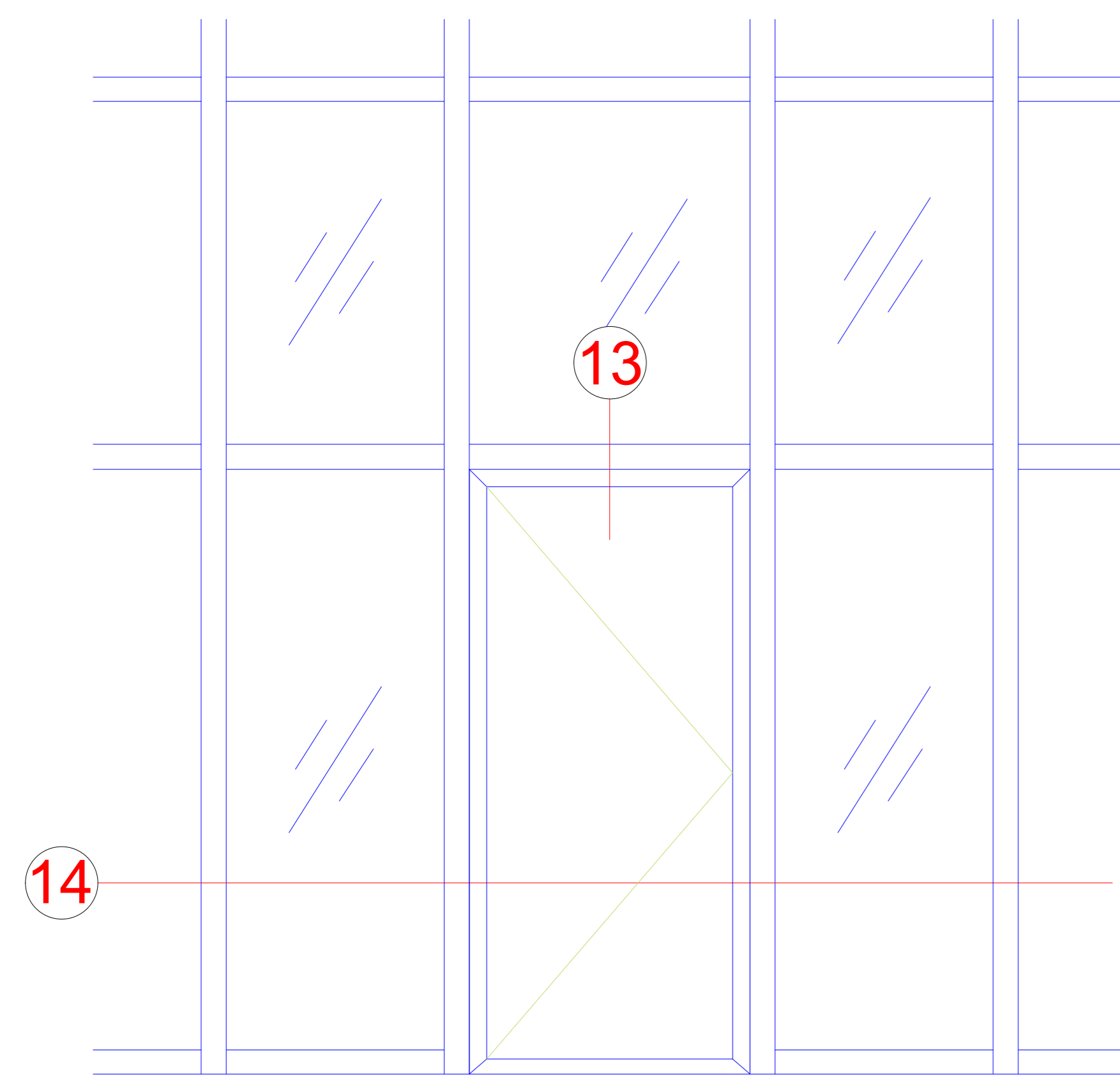
Prüfungen und Normen

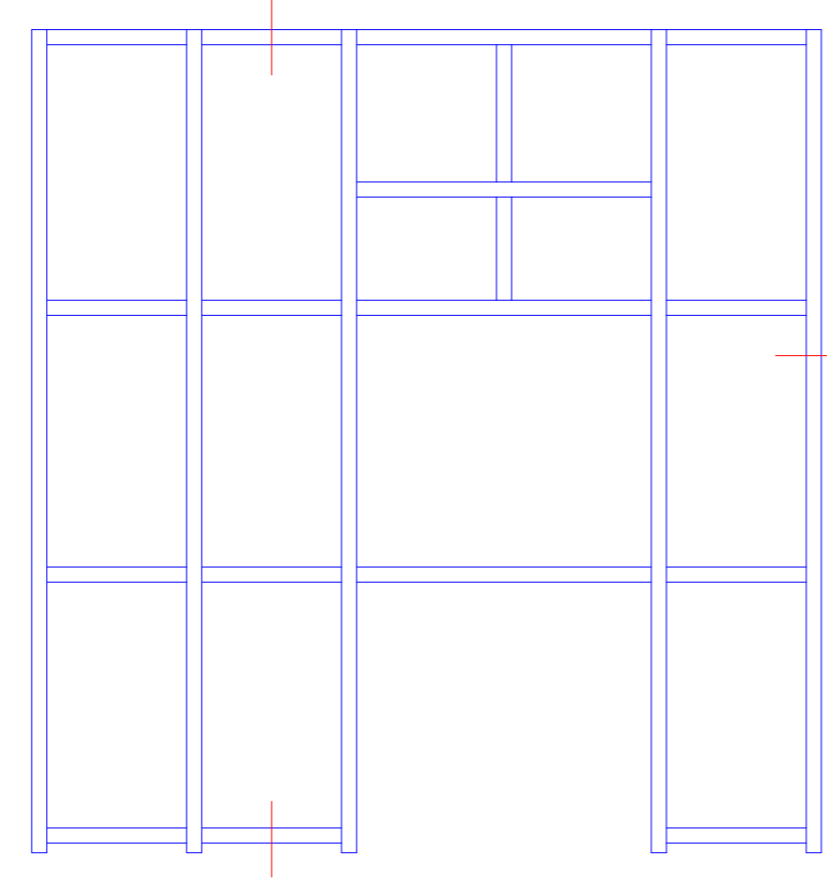
Tests and standards

| | |
|---|---------------------------------------|
| Wärmedämmung nach DIN EN ISO 1077-2 Thermal insulation in accordance with DIN EN ISO 1077-2 | Uf = 1,6 W/(m²K) |
| Einbruchhemmung nach DIN V ENV 1627 (DIN EN 1627) Burglar resistance in accordance with DIN V ENV 1627 (DIN EN 1627) | Klasse RC 2 (WK2) Class RC 2 (WK2) |
| Luftdurchlässigkeit nach DIN EN 12207 Air permeability in accordance with DIN EN 12207 | Klasse 4 Class 4 |
| Schlagregendichtheit nach DIN EN 12208 Watertightness in accordance with DIN EN 12208 | Klasse E750 Class E750 |
| Windlastwiderstand nach DIN EN 12210 Wind load resistance in accordance with DIN EN 12210 | Klasse C3 / B3 Class C3 / B3 |

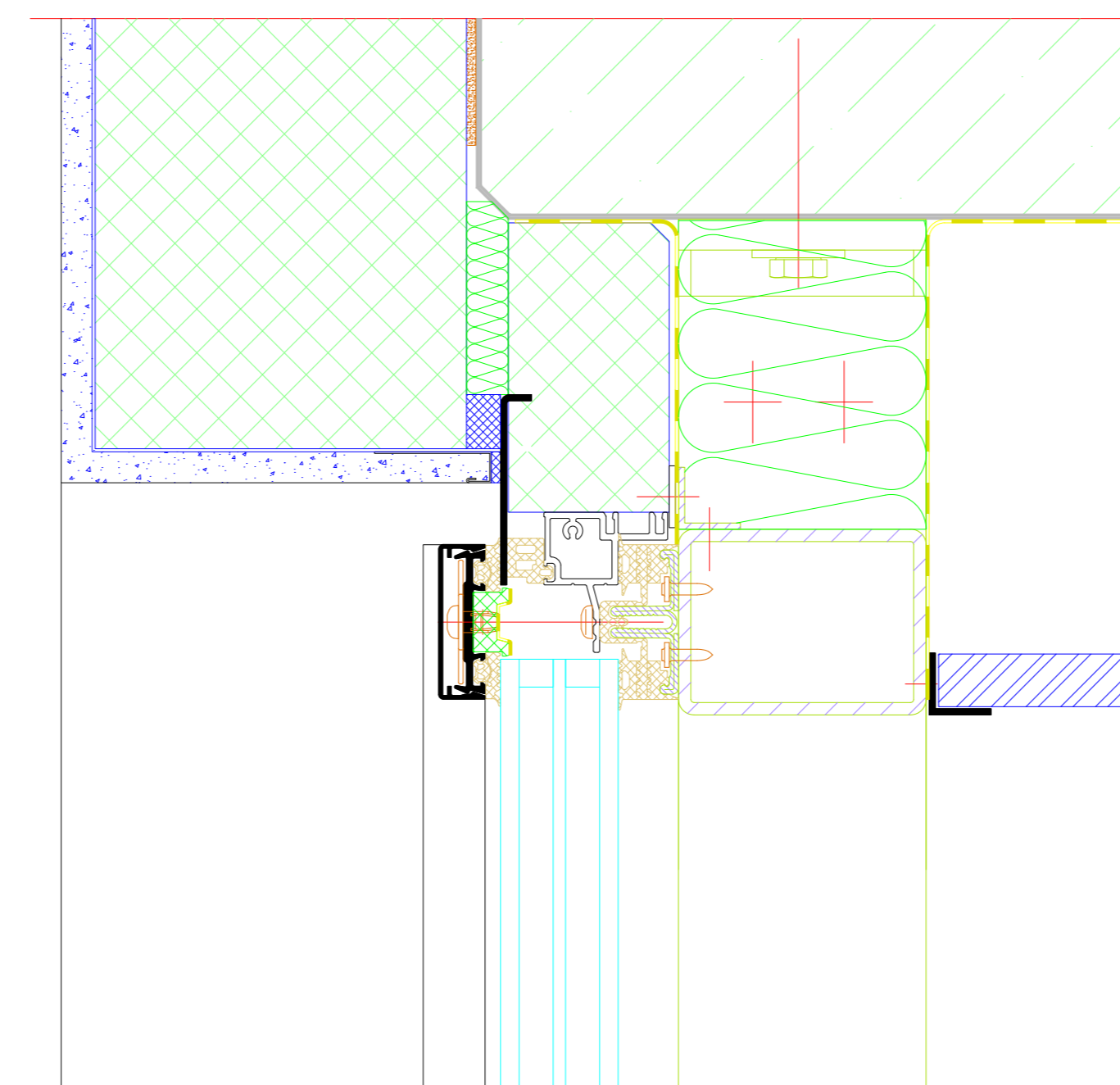
- * Die Angaben beschreiben die Bestwerte des Gesamtsystems bei innen als auch außen öffnenden Ausführungen. Die Eigenschaften einer jeweils gewählten Ausführungsvariante oder Elementkombination sind im Einzelfall anhand der ausführlichen Prüfdokumentation zu bestimmen.
- The information describes the optimum values of the entire system for both inward and outward-opening designs. The properties of a selected design option or unit combination have to be determined individually based on the comprehensive test documentation.

Einsatzelement AD UP 75
AD UP 75 insert unit



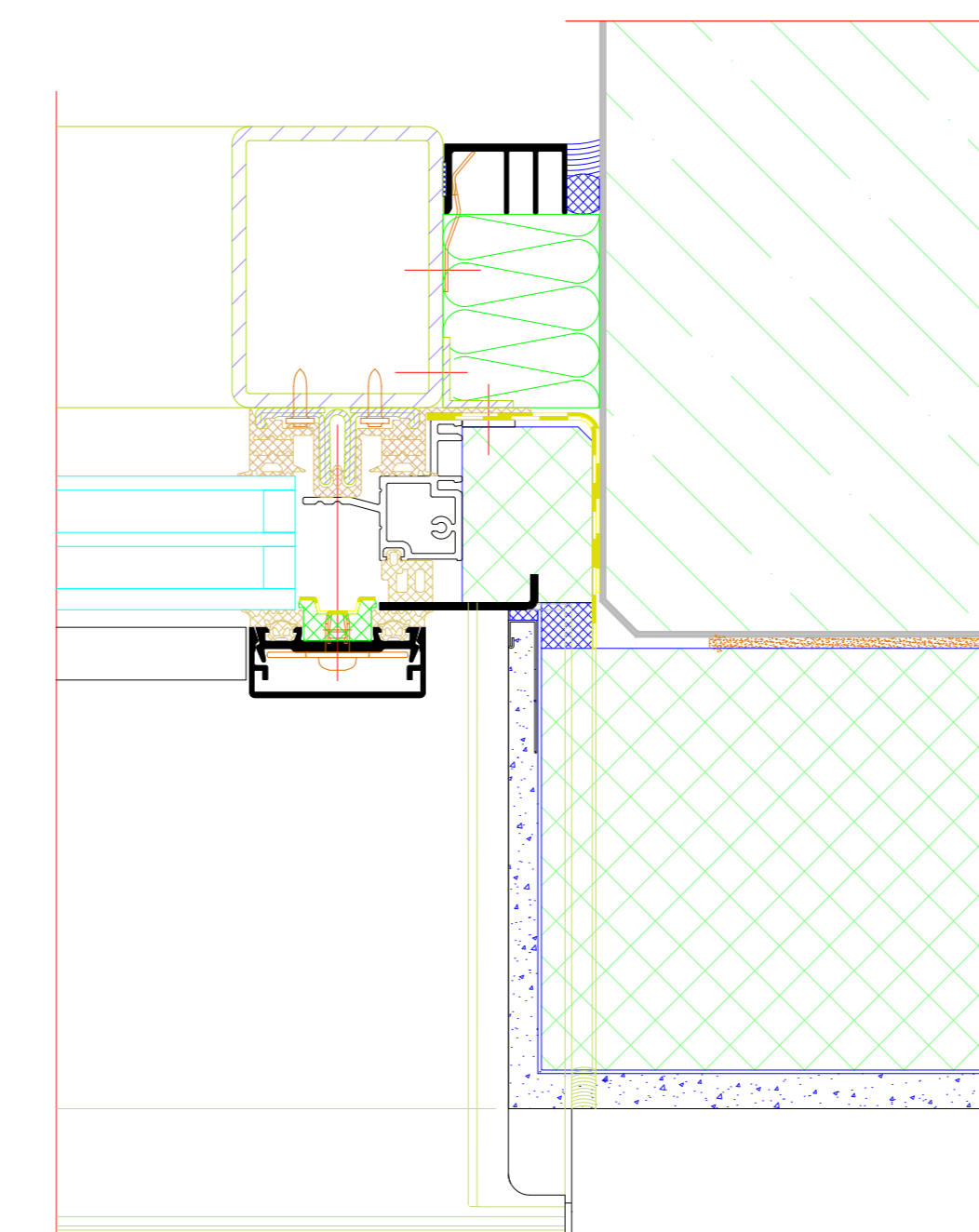


Oberer Anschluss
Oberer Anschluss



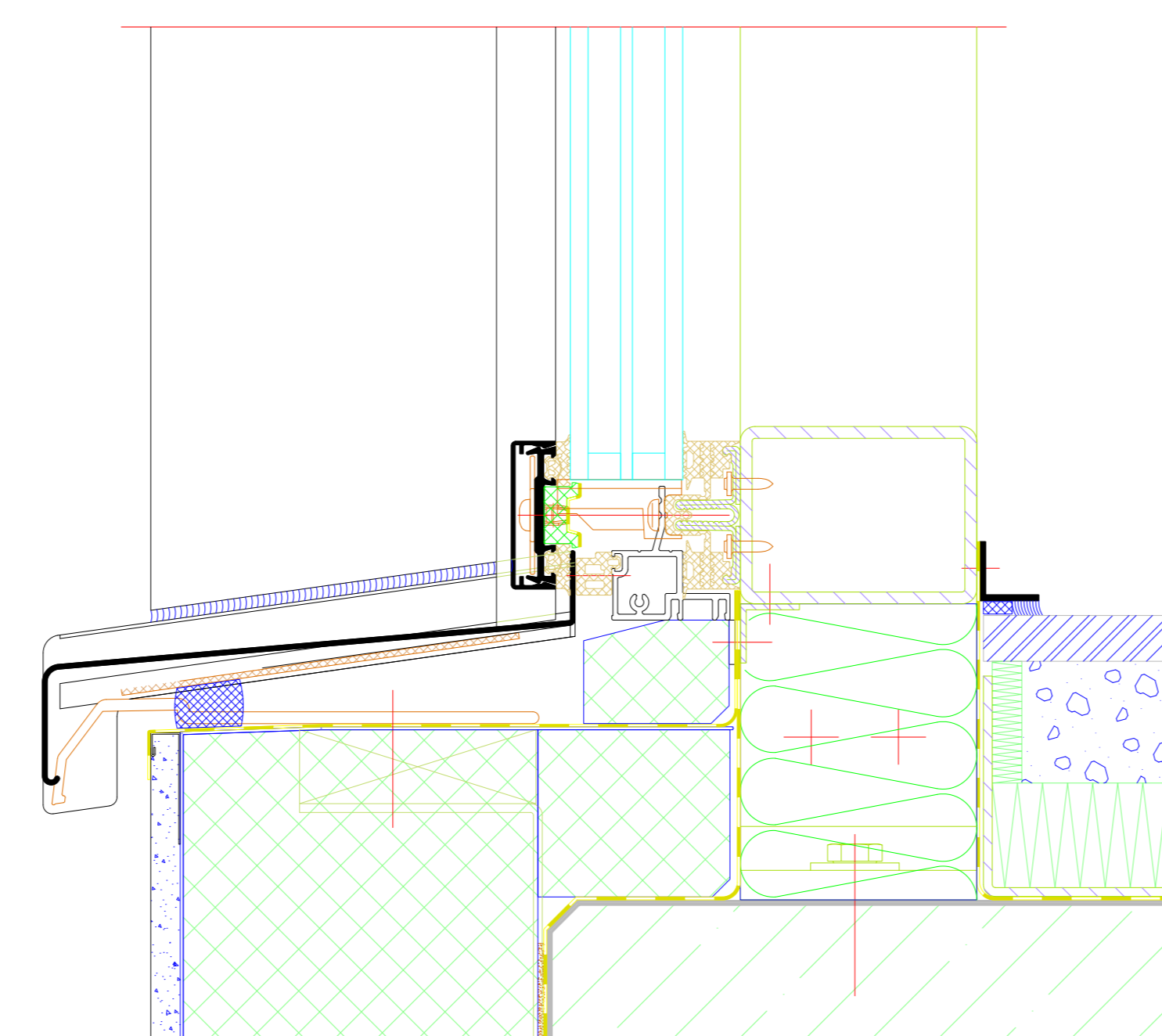
M 1:2

Seitlicher Wandanschluss
Seitlicher Wandanschluss

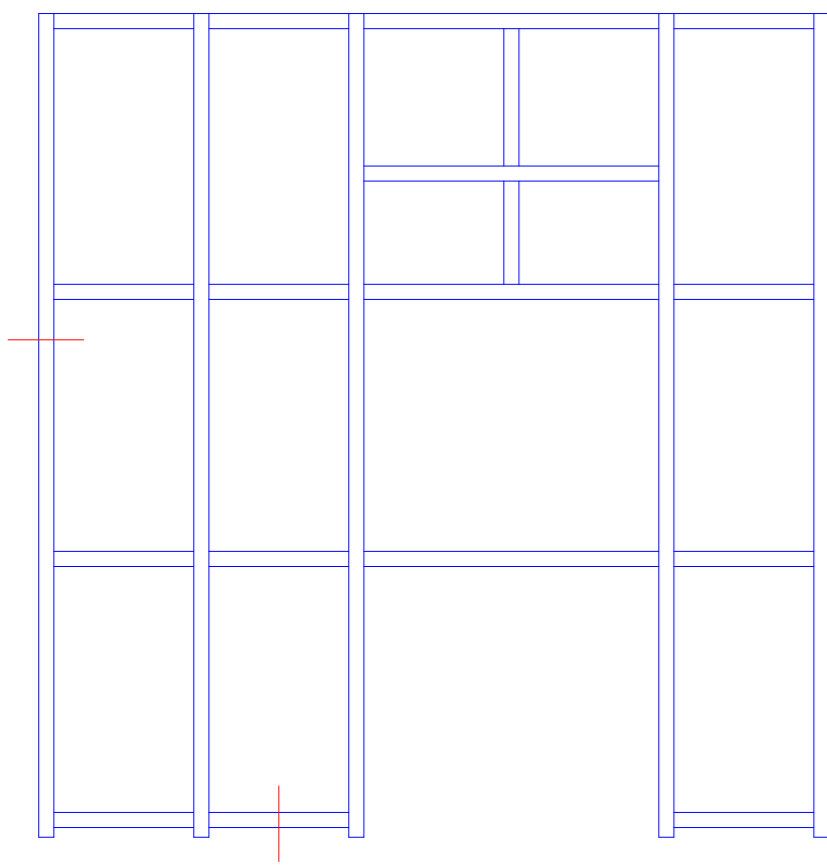


M 1:2

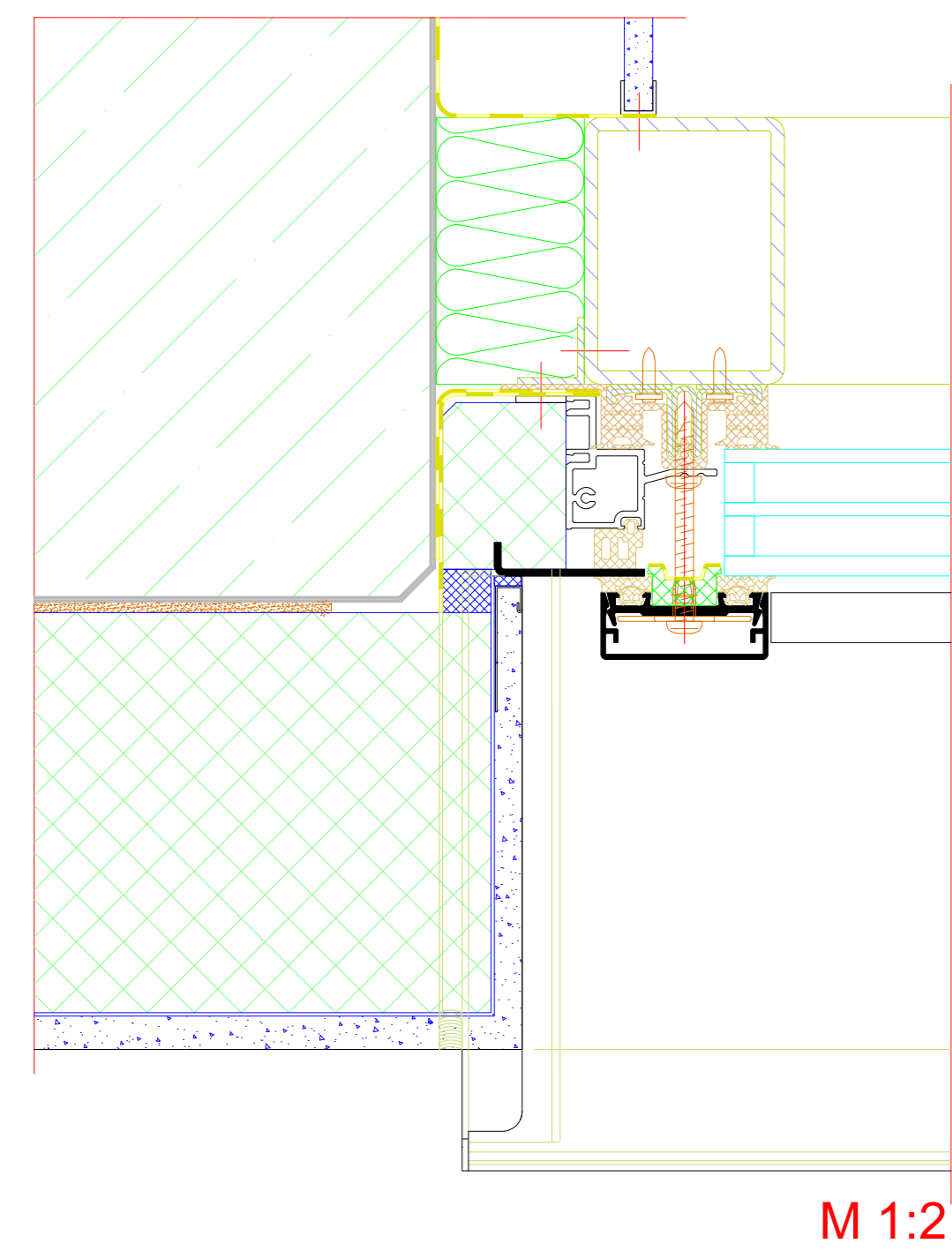
Unterer Anschluss
Unterer Anschluss



M 1:2

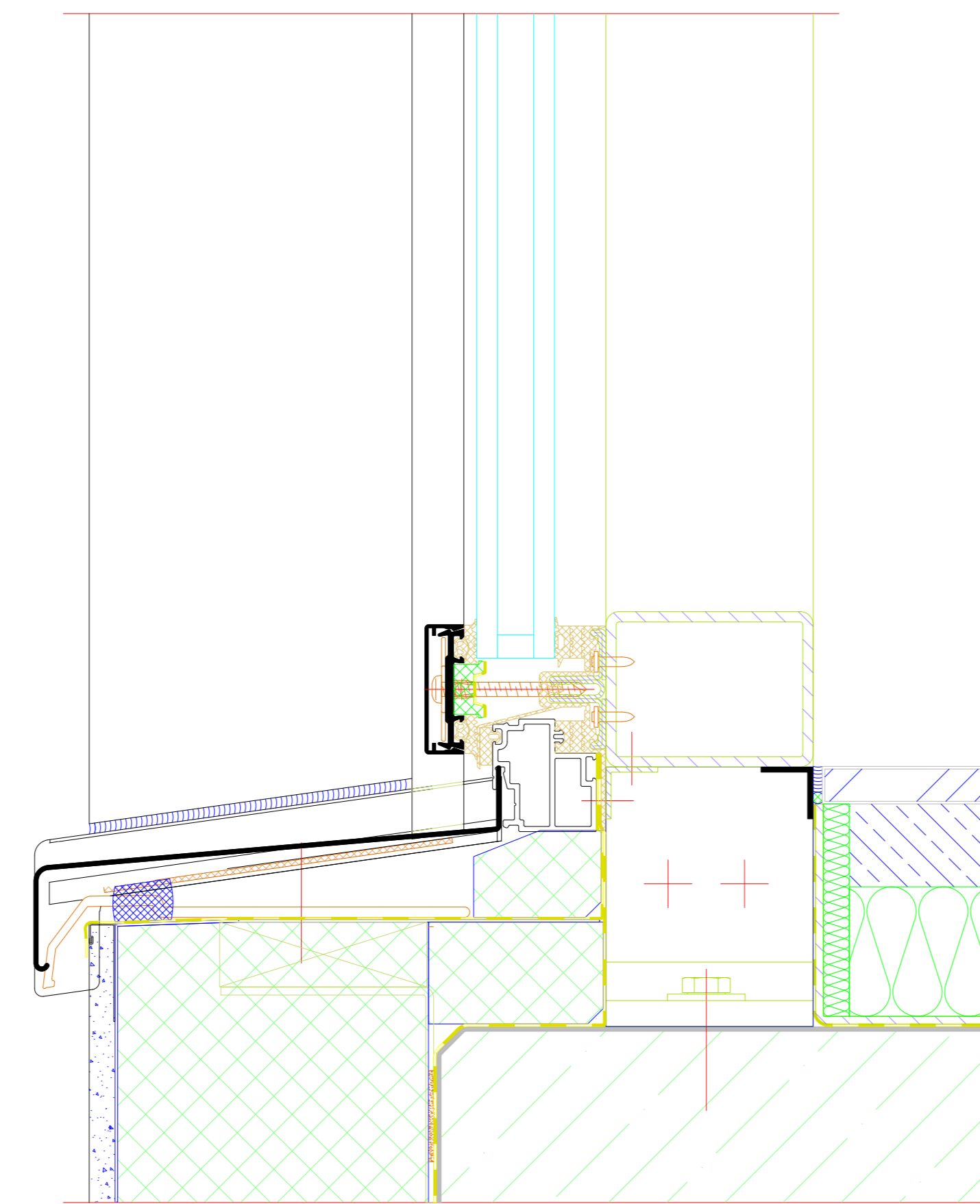


Seitlicher Wandanschluss
Seitlicher Wandanschluss



M 1:2

Unterer Anschluss
Unterer Anschluss



M 1:2