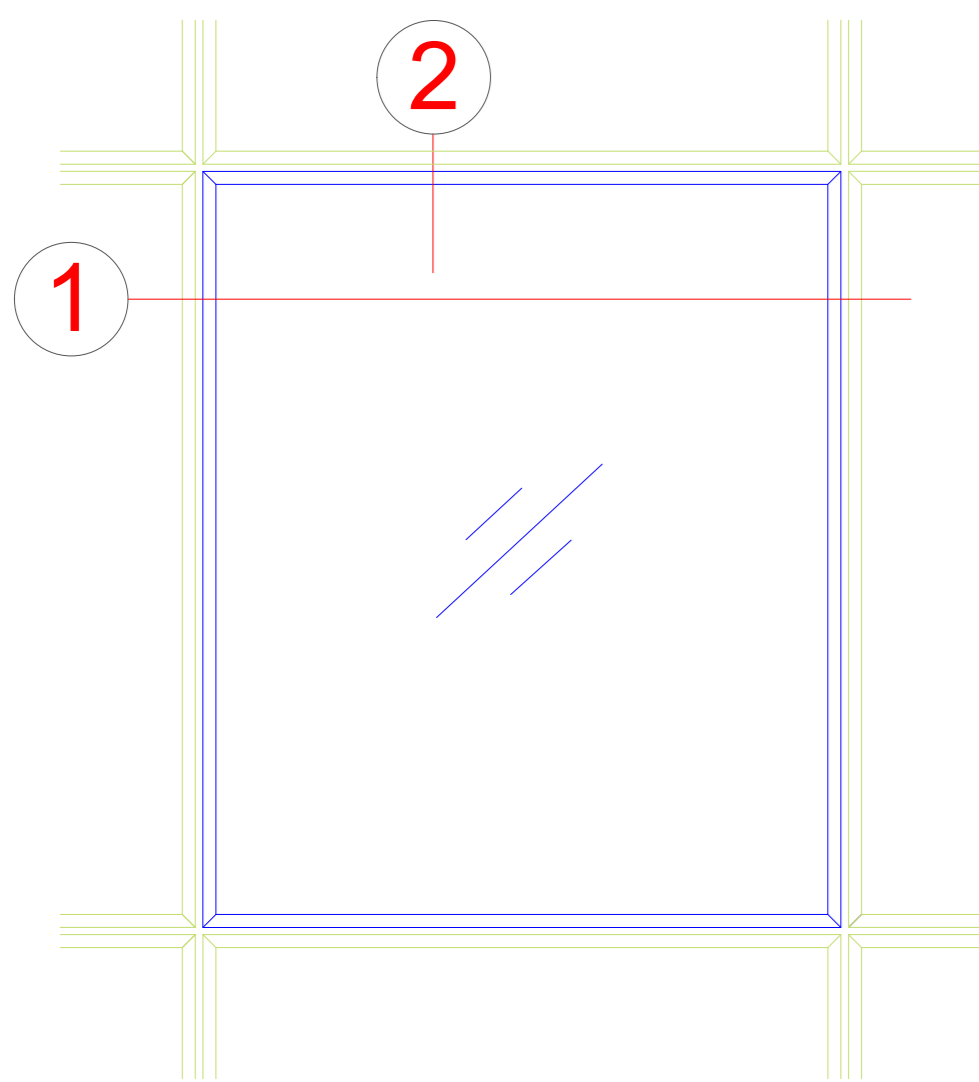


Standardelement
Standard unit



Technische Informationen

Technical information

Prüfungen und Normen ***

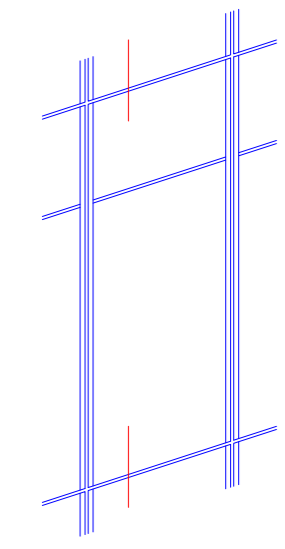
Tests and standards

Wärmedämmung nach DIN EN ISO 10077 , T2 *	Uf >= 1,4 W/(m²K)
Thermal insulation in accordance with DIN EN ISO 10077, part 2	
Luftschalldämmung nach EN ISO 717-1 **	bis Rw 46 dB
Airborne sound insulation in accordance with EN ISO 717-1	Up to Rw 46 dB
Einbruchhemmung nach DIN V ENV 1627	bis RC3
Burglar resistance in accordance with DIN V ENV 1627	Up to RC3
Luftdurchlässigkeit nach EN 12153	Klasse AE
Air permeability in accordance with EN 12153	Class AE
Schlagregendichtheit nach EN 12155	Klasse RE 1200
Watertightness in accordance with EN 12155	Class RE 1200
Windlastwiderstand nach EN 12179	± 1,5 KN/m²
Wind load resistance in accordance with EN 12179	± 2,25 KN/m²
Stoßfestigkeit nach EN 13049, Belastung von innen / außen	Klasse I5 / E5
Impact resistance in accordance with EN 13049, load from inside / outside	Class I5 / E5

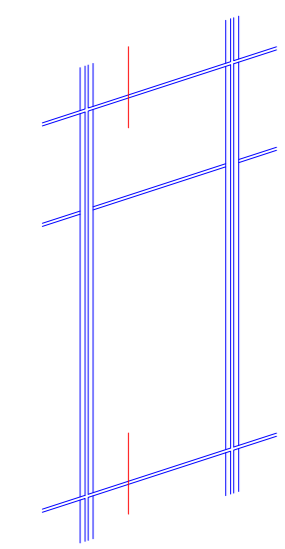
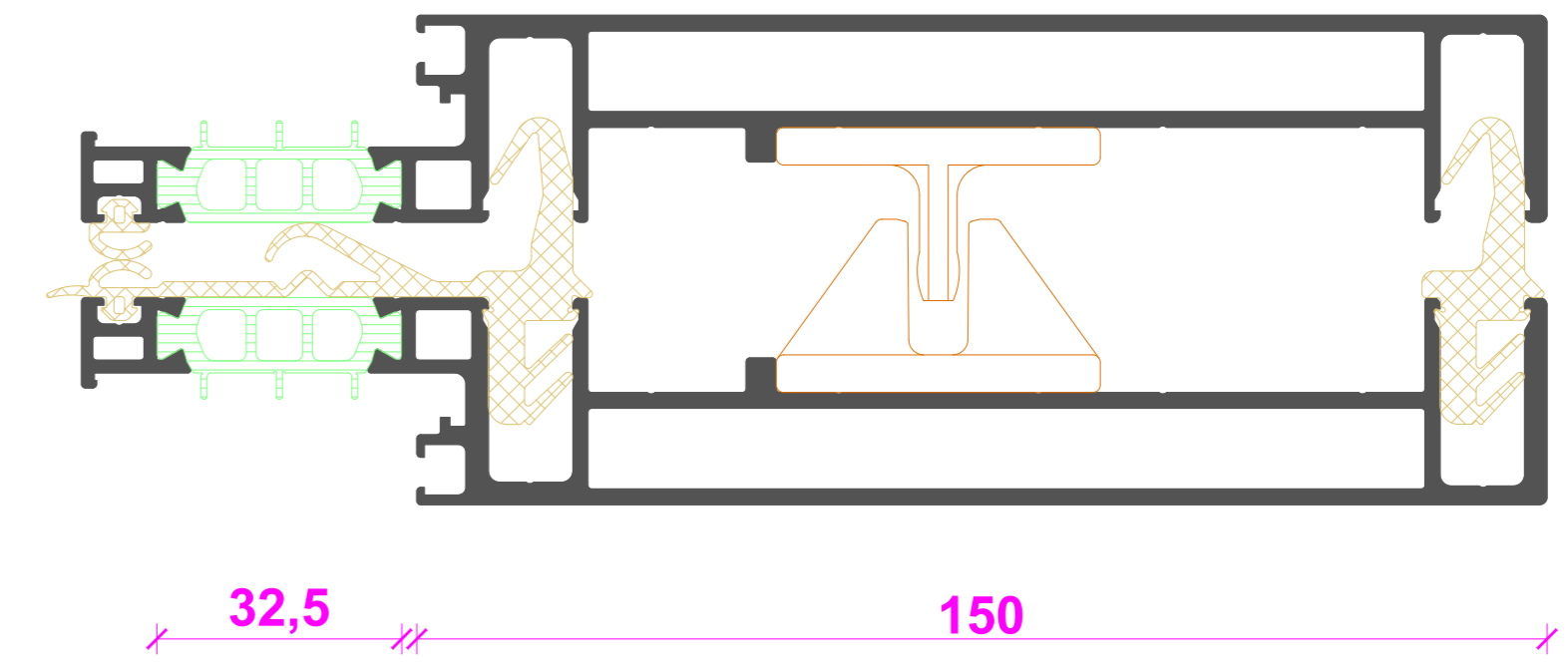
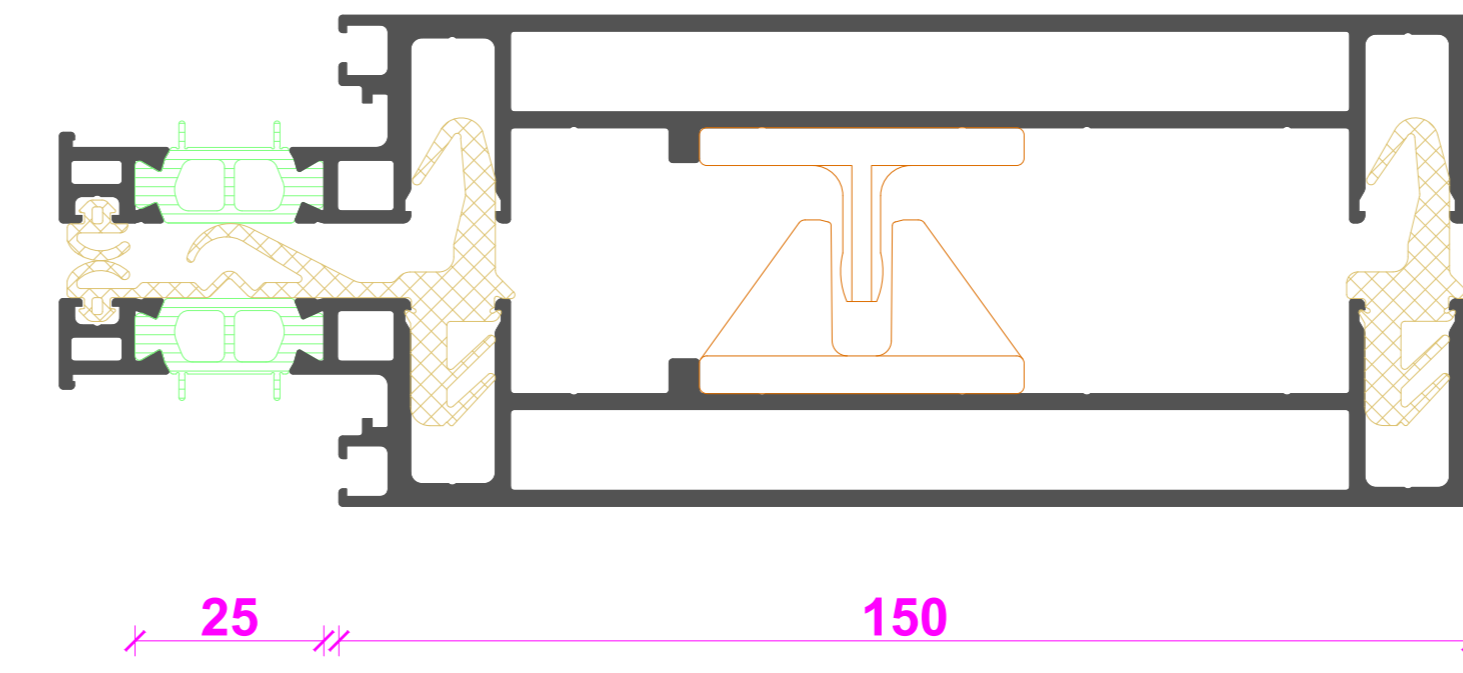
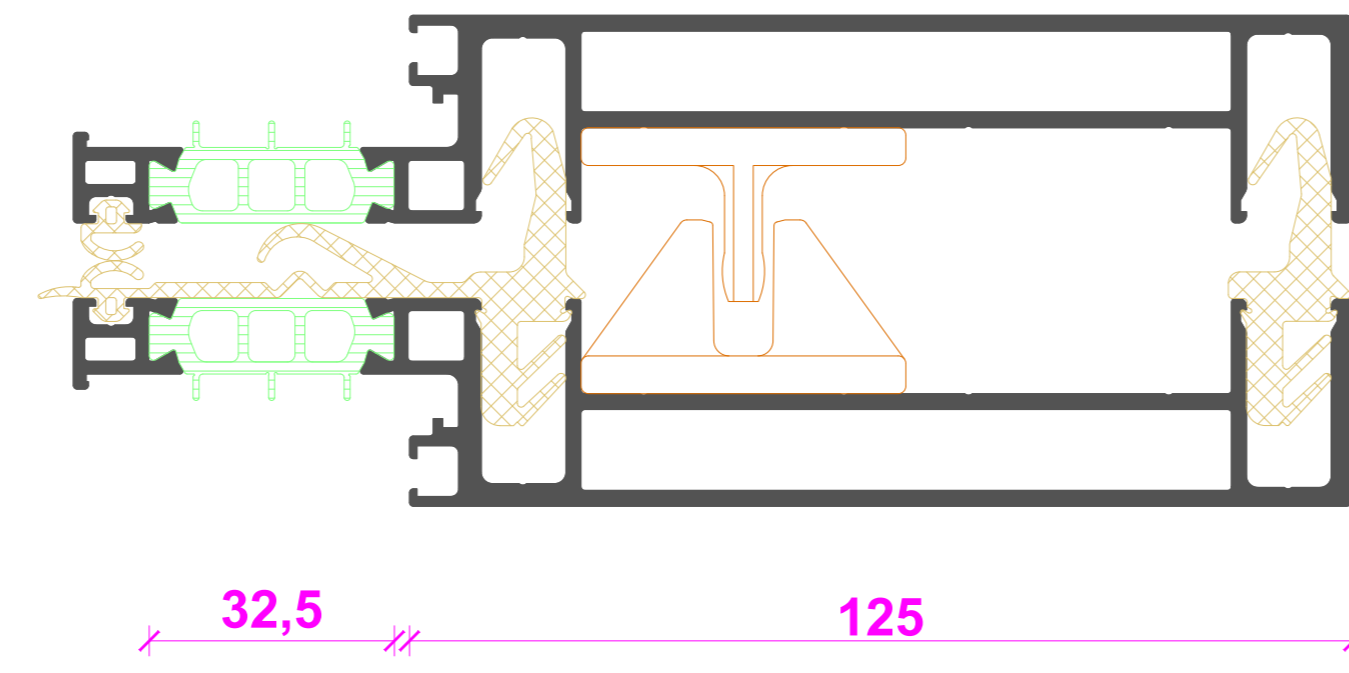
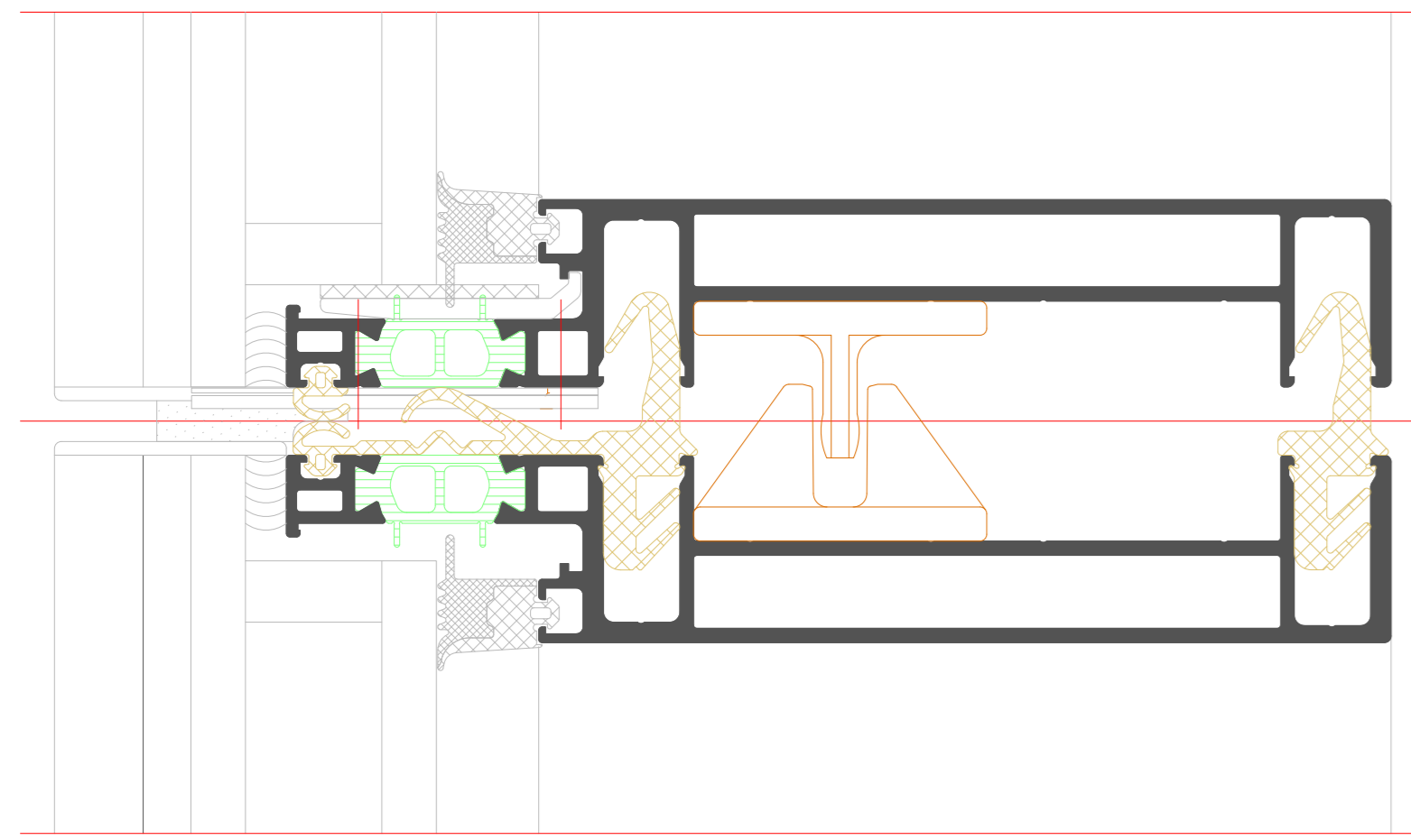
* Bewertung/Berechnung der Wärmedurchgangskoeffizienten U_{cw} eines Vorhangfassadenelements ist gemäß prEN 13947 durchzuführen.
Assessment/calculation of the U_{cw} thermal transmittance of a curtain wall unit must be carried out in accordance with prEN 13947.

** Objektbezogener Nachweis - wenn erforderlich
Project-specific certification – if necessary

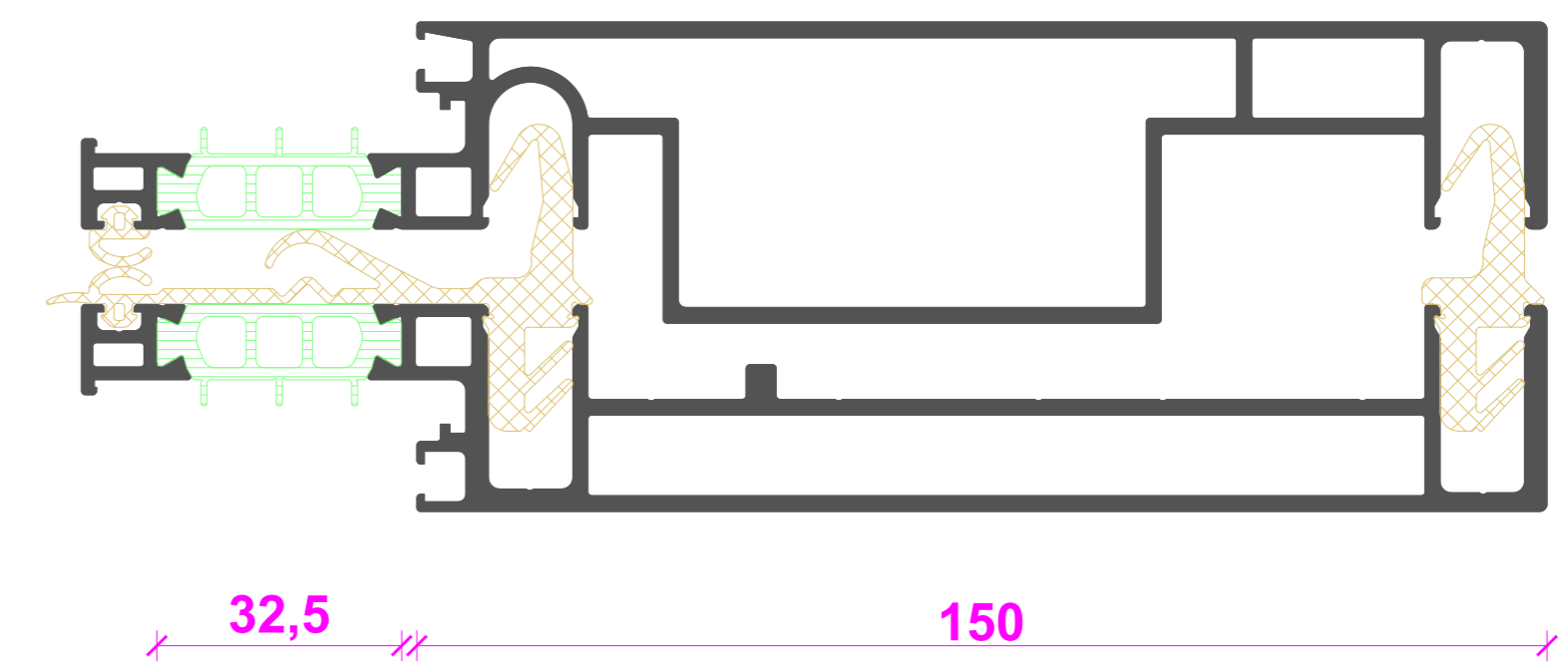
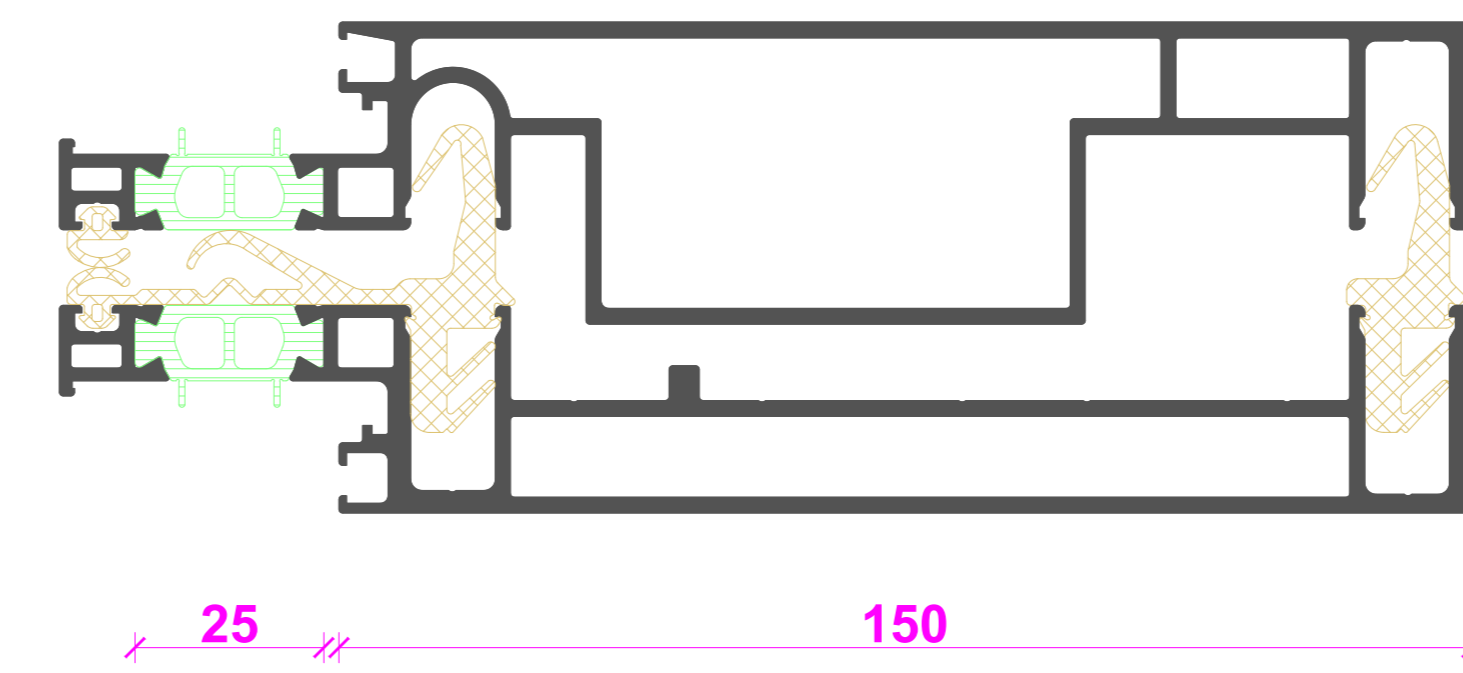
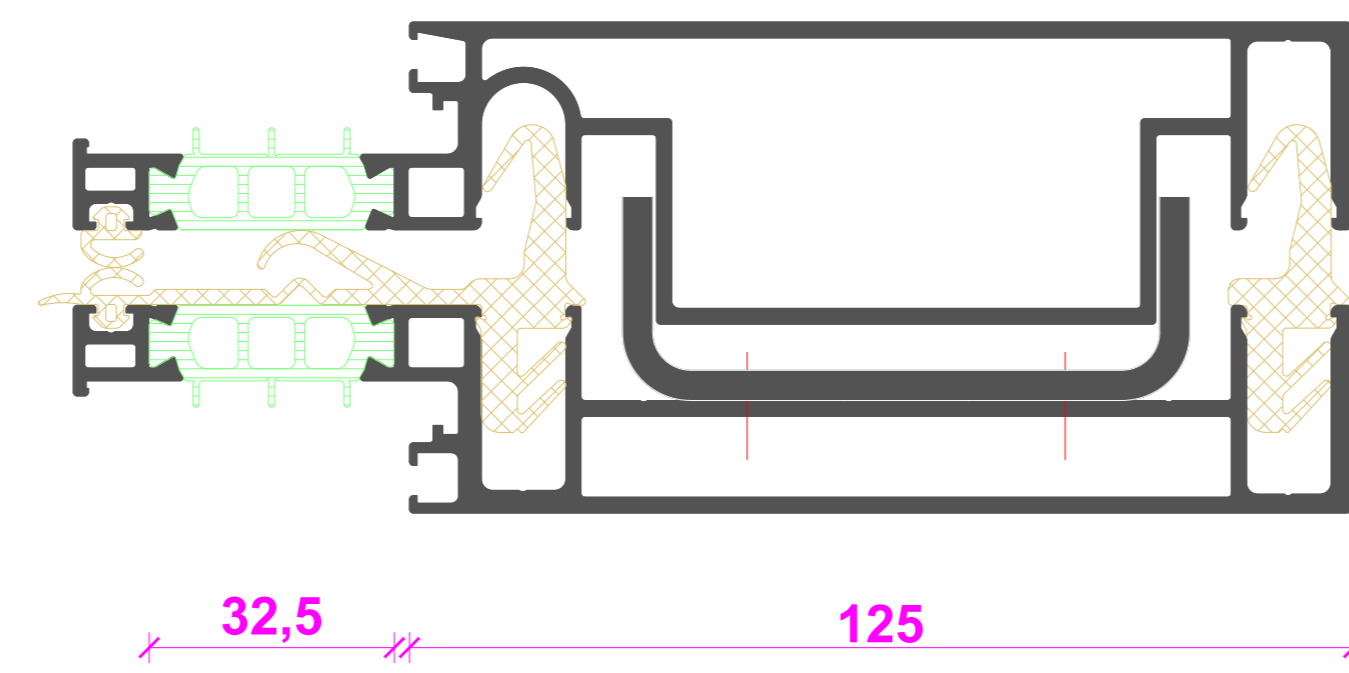
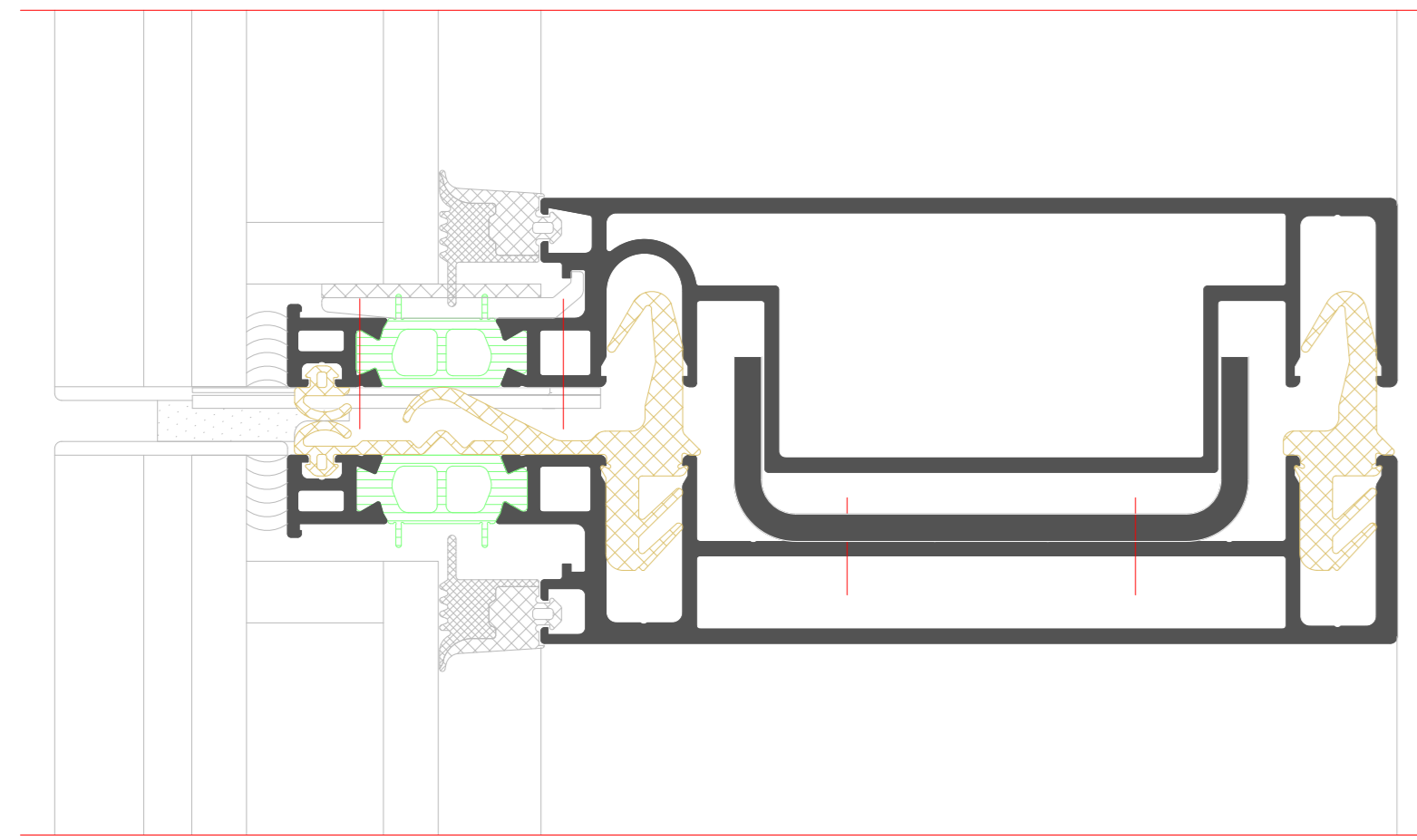
*** Die Angaben beschreiben die Bestwerte des Gesamtsystems.
Die Eigenschaften einer jeweils gewählten Ausführungsvariante oder Elementkombination sind im Einzelfall anhand der ausführlichen Prüfdokumentation zu bestimmen.
The information describes the optimum values of the entire system.
The properties of a selected design option or unit combination have to be determined individually based on the comprehensive test documentation.



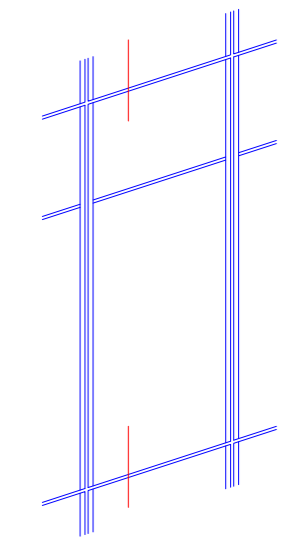
Rahmenprofile - horizontal
Frame profiles - horizontal



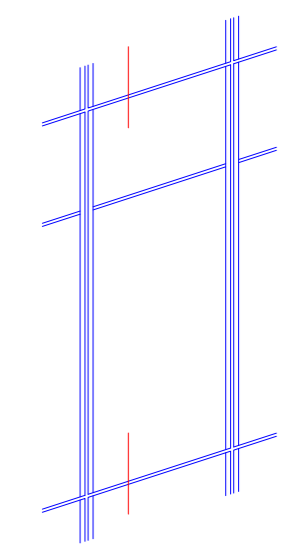
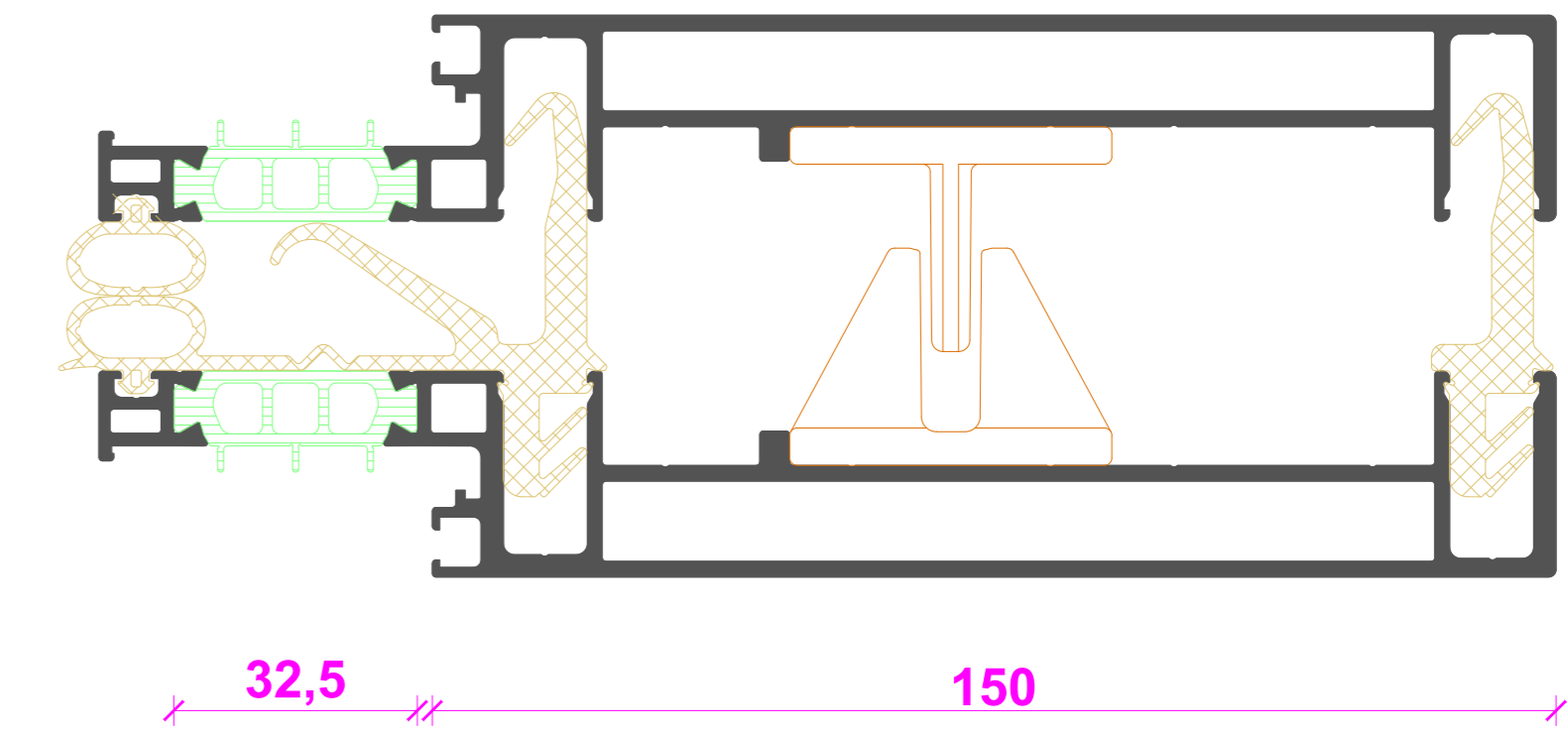
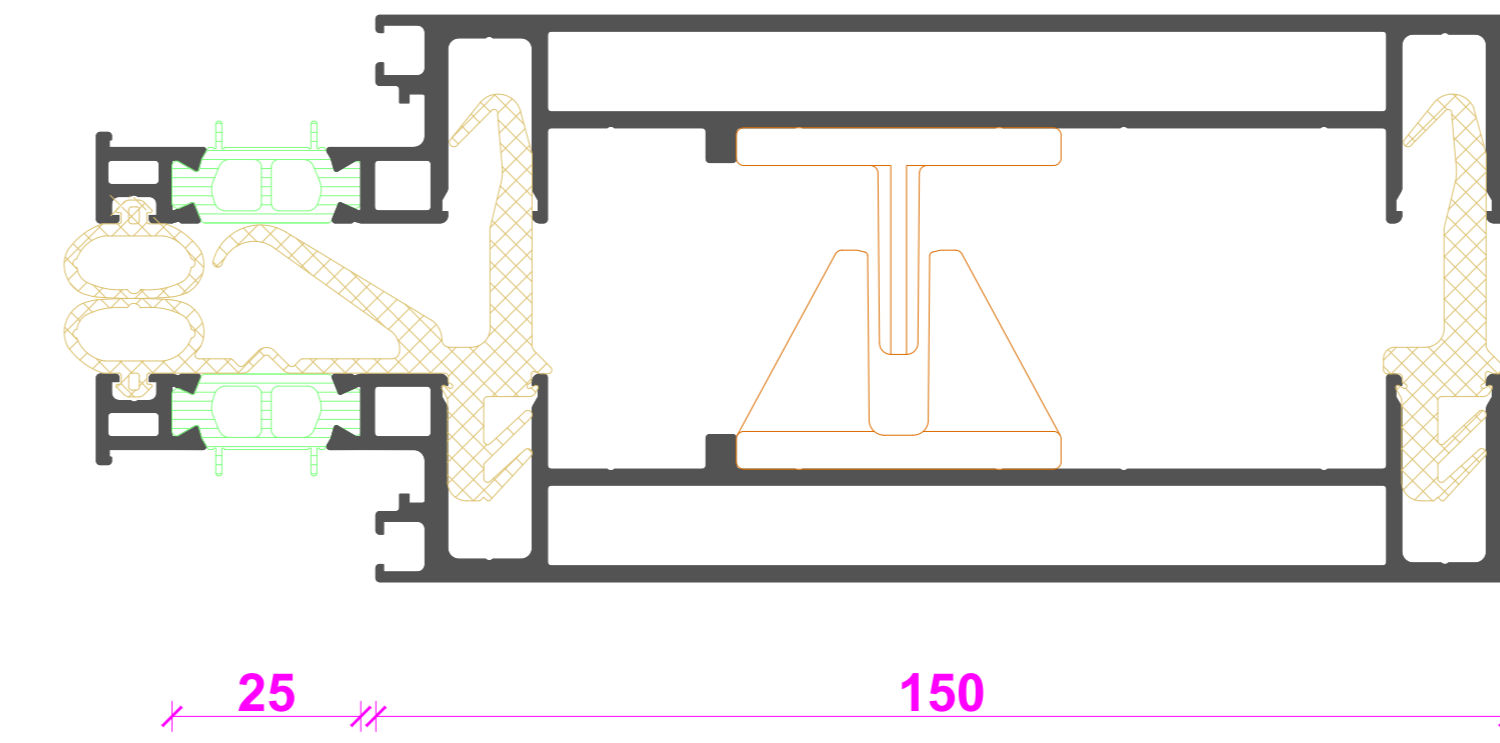
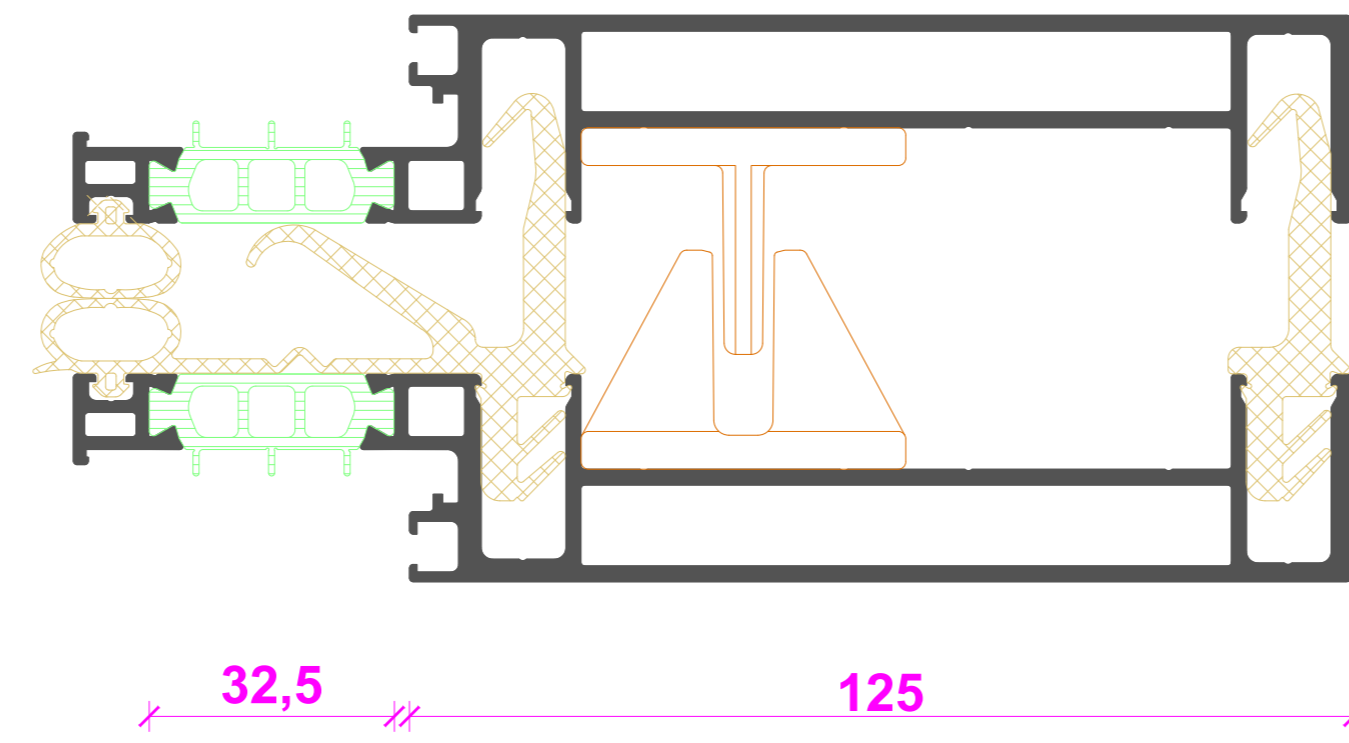
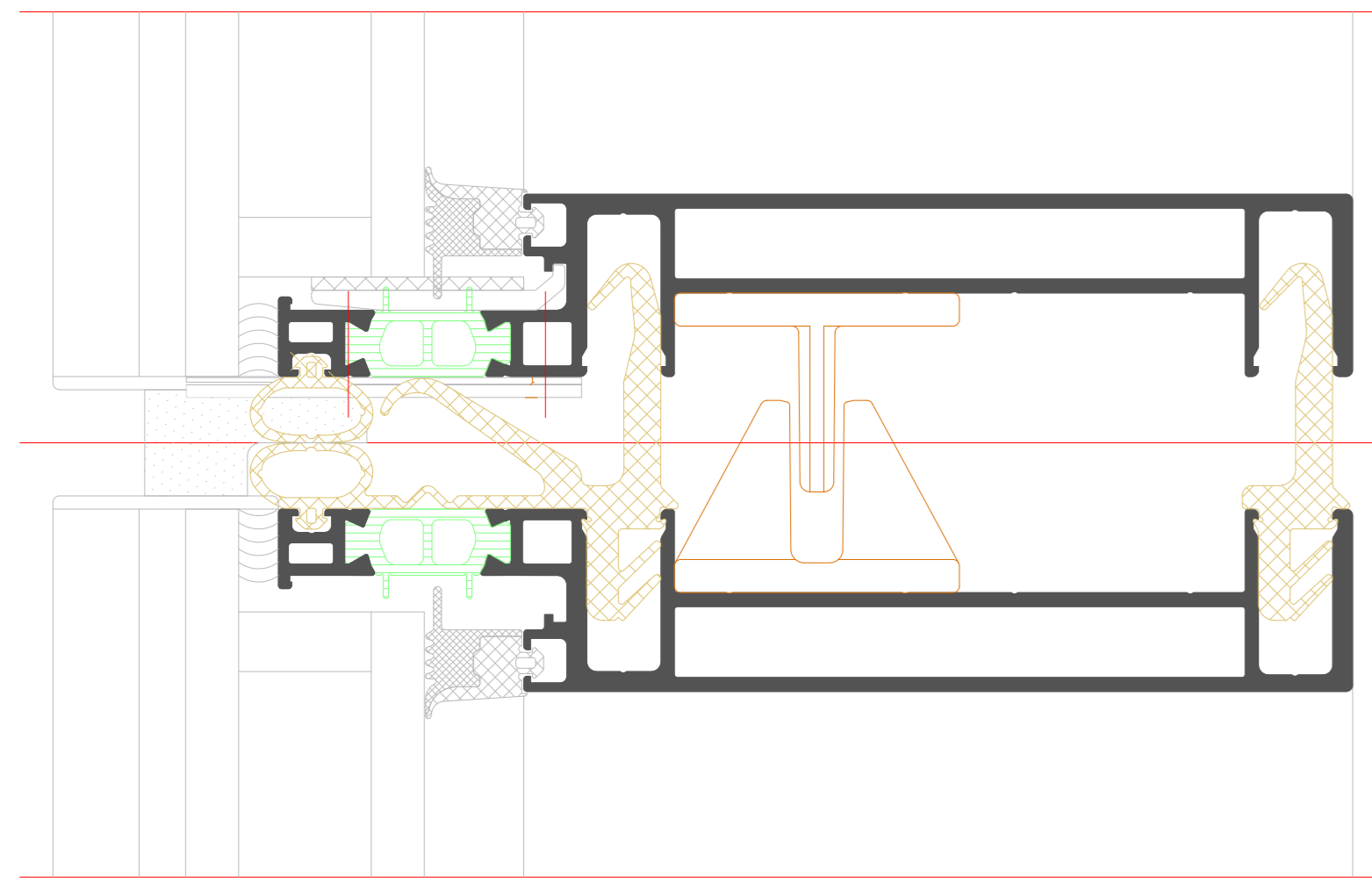
verstärkte Rahmenprofile - horizontal
Reinforced frame profiles - horizontal



NO	DATE	REVISION	DESIGNER	CHECKER
001	10.10.2017	01
PROJECT Facade RIVA USC 65 F.H Facade RIVA USC 65 F.H				
BENEDICT + RIVA RIVA Profilsysteme Riva Profile systems				



Rahmenprofile - horizontal - 20mm Fuge
 Frame profiles - horizontal - 20 mm joint



Rahmenprofile - horizontal - 20mm Fuge
 Frame profiles - horizontal - 20 mm joint

