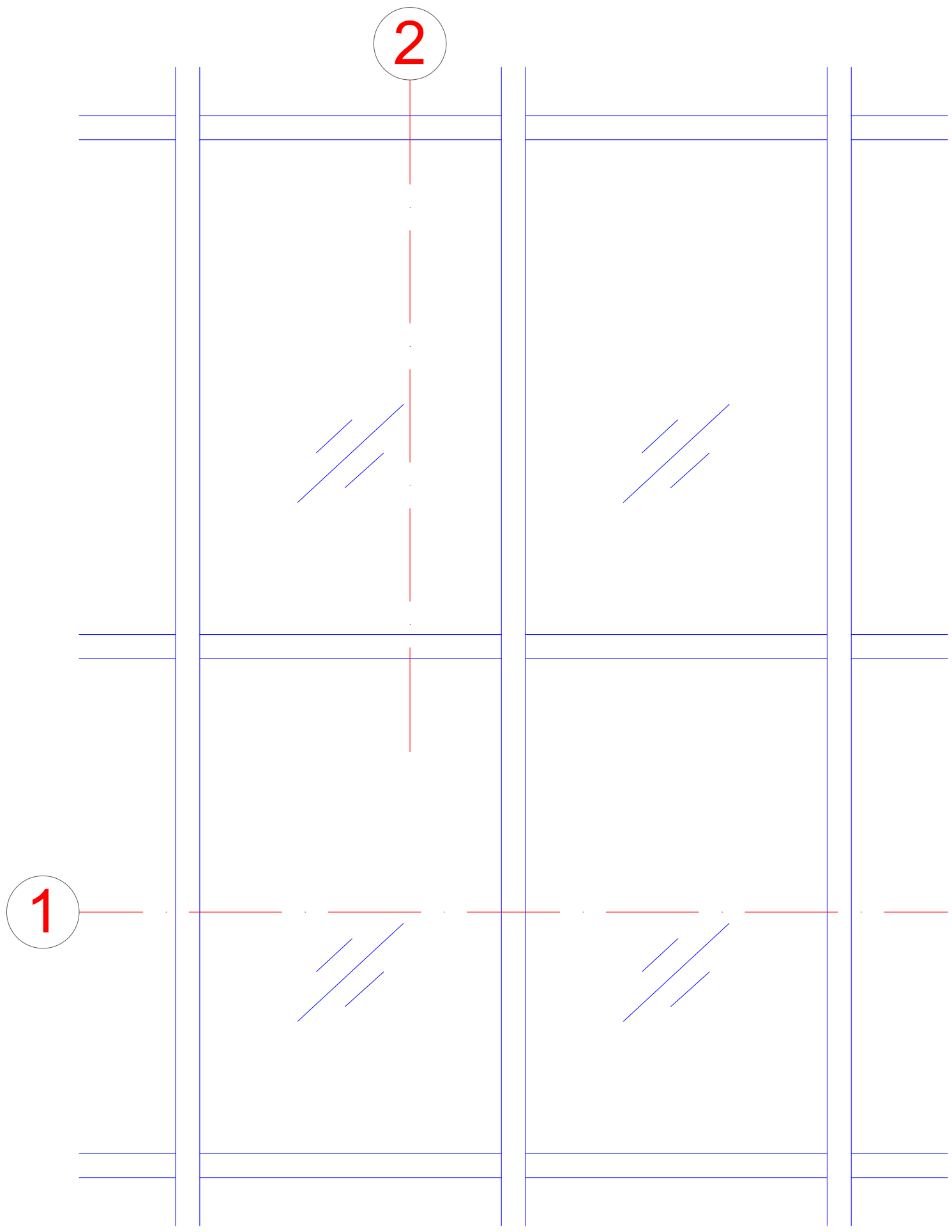
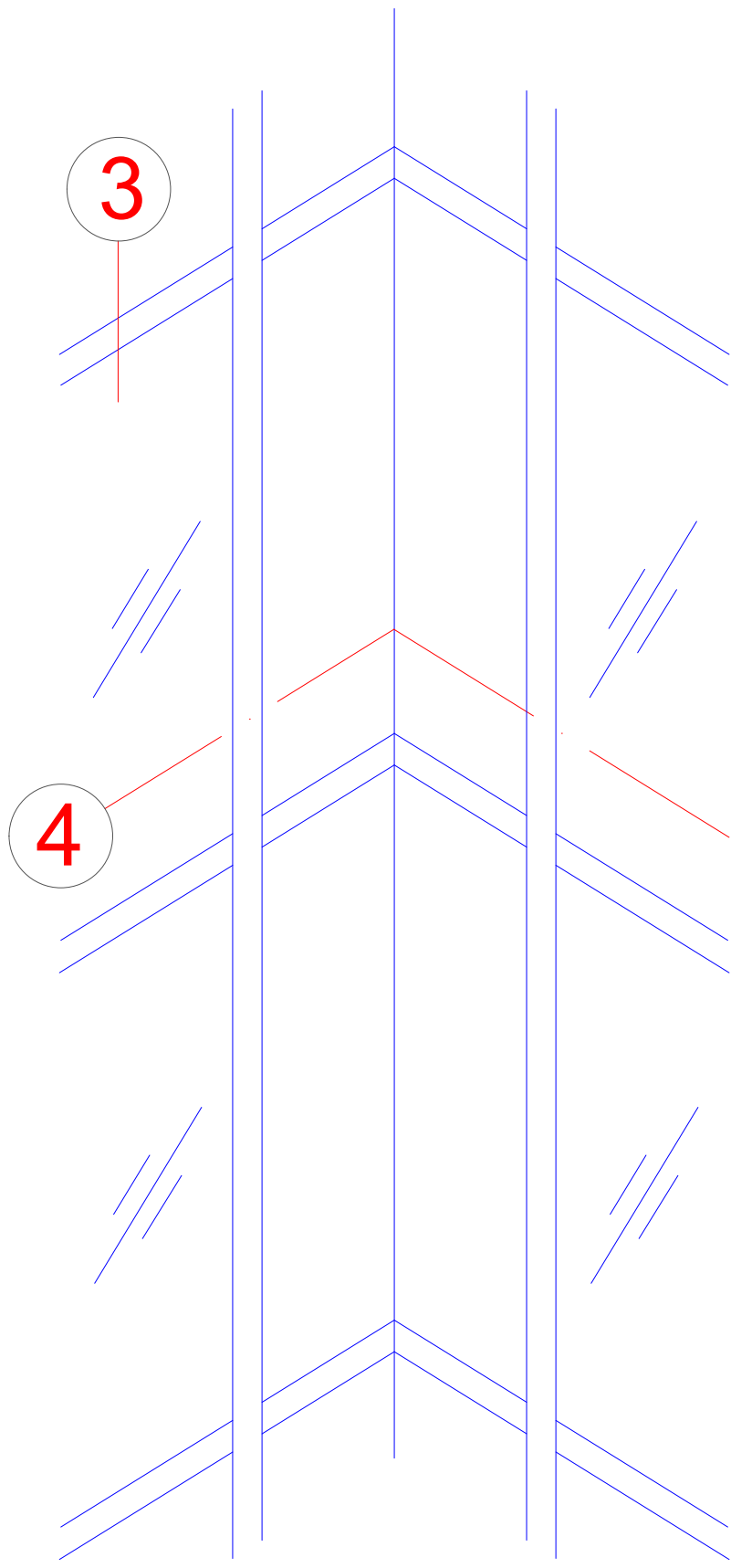


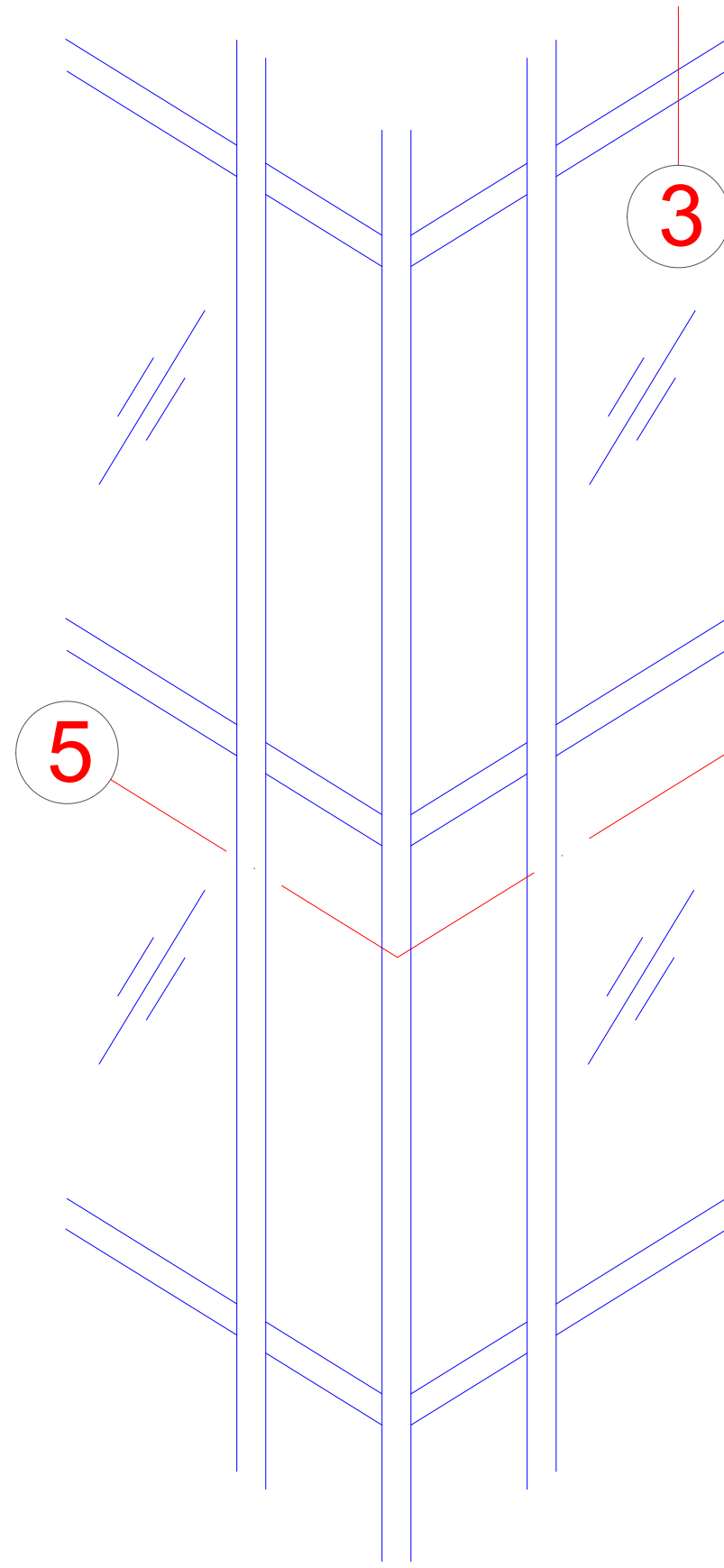
Festverglasung
Fixed glazing



90° Innenecke
90° inner corner



90° Außenecke
90° outer corner



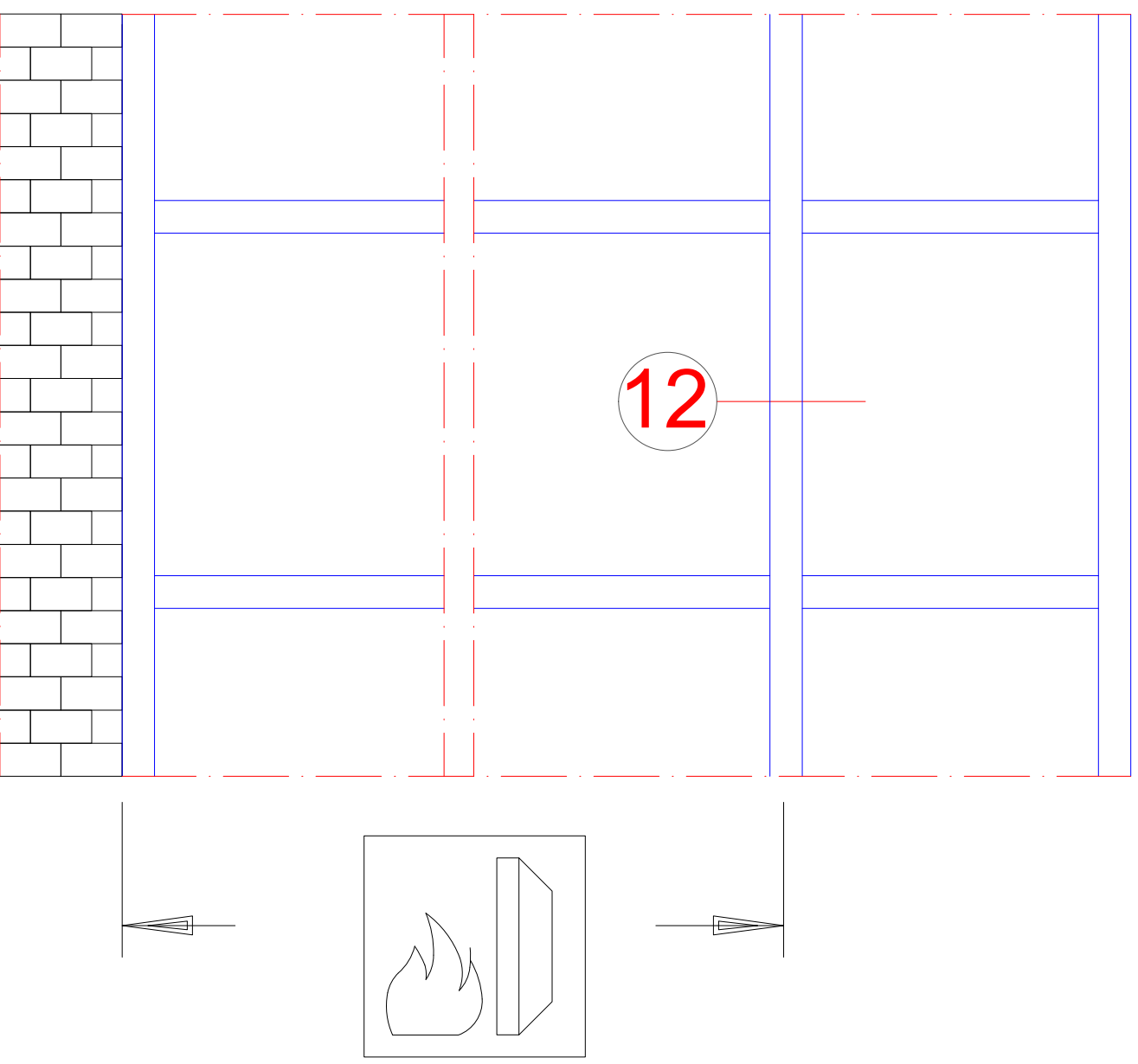
Technische Informationen

Technical Information

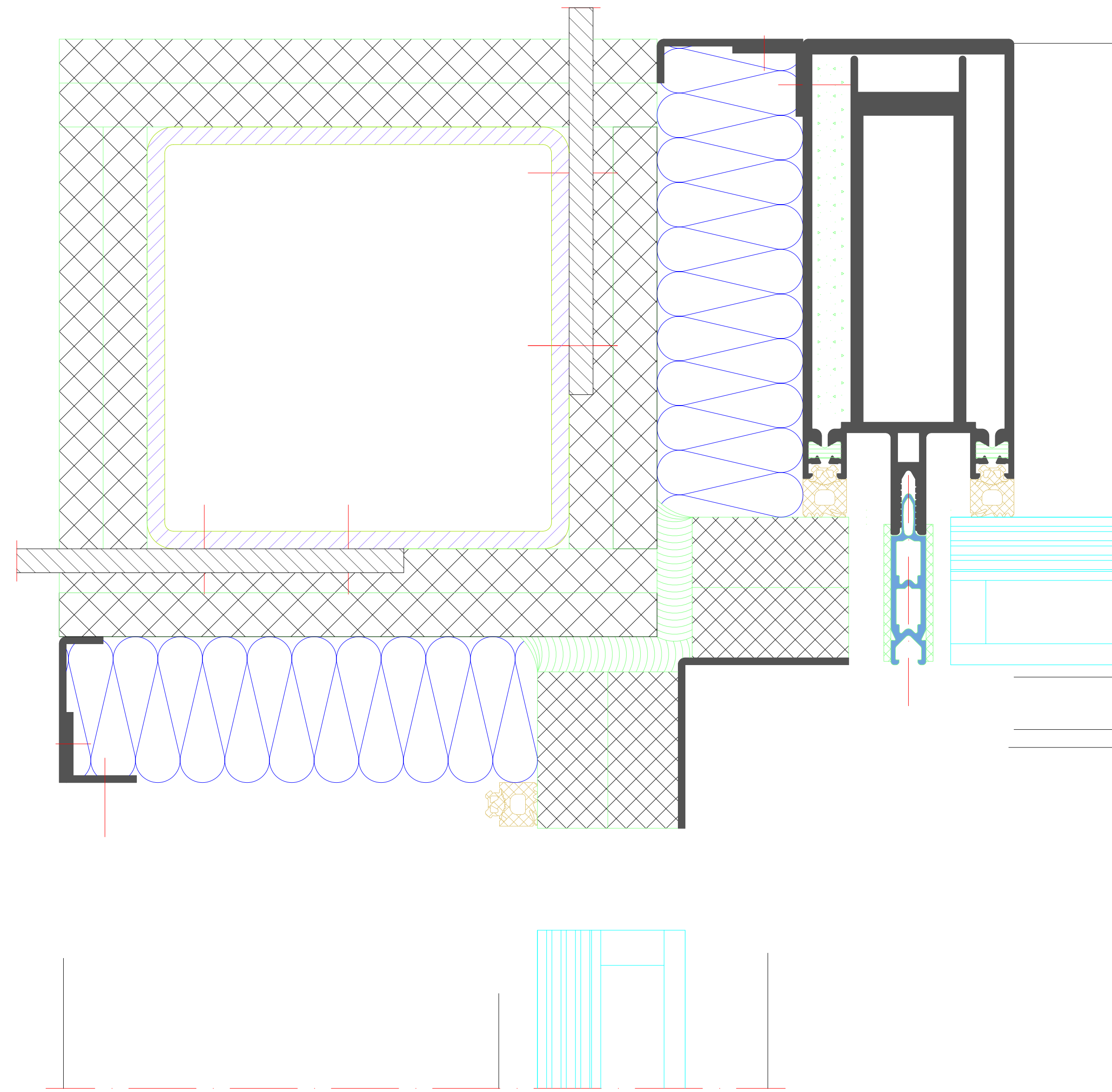
Prüfungen und Normen	
Tests and standards	
Wärmedämmung nach DIN EN ISO 10077-2 *	Uf = > 1,1W/(m²K)
Thermal insulation in accordance with DIN EN ISO 10077-2	
Feuerwiderstand nach EN 13501-2	Klasse EW 30/ EI 30
Fire resistance in accordance with EN 13501-2	Class EW 30/ EI 30
Einbruchhemmung nach DIN V ENV 1627	Klasse WK2 / RC2
Burglar resistance in accordance with DIN V ENV 1627	Class WK2 / RC2
Luftdurchlässigkeit nach DIN EN 12152	Klasse AE
Air permeability in accordance with DIN EN 12152	Class AE
Schlagregendichtheit nach DIN EN 12155	Klasse RE 1200
Watertightness in accordance with DIN EN 12155	Class RE 1200
Windlastwiderstand nach EN 12179	+/-1,2 kN/m²
Wind load resistance in accordance with EN 12179	+/-1,8 kN/m²
Stoßfestigkeit DIN EN 14019, Belastung von innen / außen	Klasse I5 / E5
Impact resistance DIN EN 14019, load from inside / outside	Class I5 / E5

- *** Bewertung/Berechnung der Wärmedurchgangskoeffizienten U_{cw} eines Vorhangfassadenelements ist gemäß prEN 13947 durchzuführen.
Assessment/calculation of the U_{cw} thermal transmittance of a curtain wall unit must be carried out in accordance with prEN 13947.
- **** Die Angaben beschreiben die Bestwerte des Gesamtsystems.
Die Eigenschaften einer jeweils gewählten Ausführungsvariante oder Elementkombination sind im Einzelfall anhand der ausführlichen Prüfdokumentation zu bestimmen.
The information describes the optimum values of the entire system.
The properties of a selected design option or unit combination have to be determined individually based on the comprehensive test documentation.

Übergang Brandschutz- / Standardfassade
Transition from fire-resistant façade to standard façade



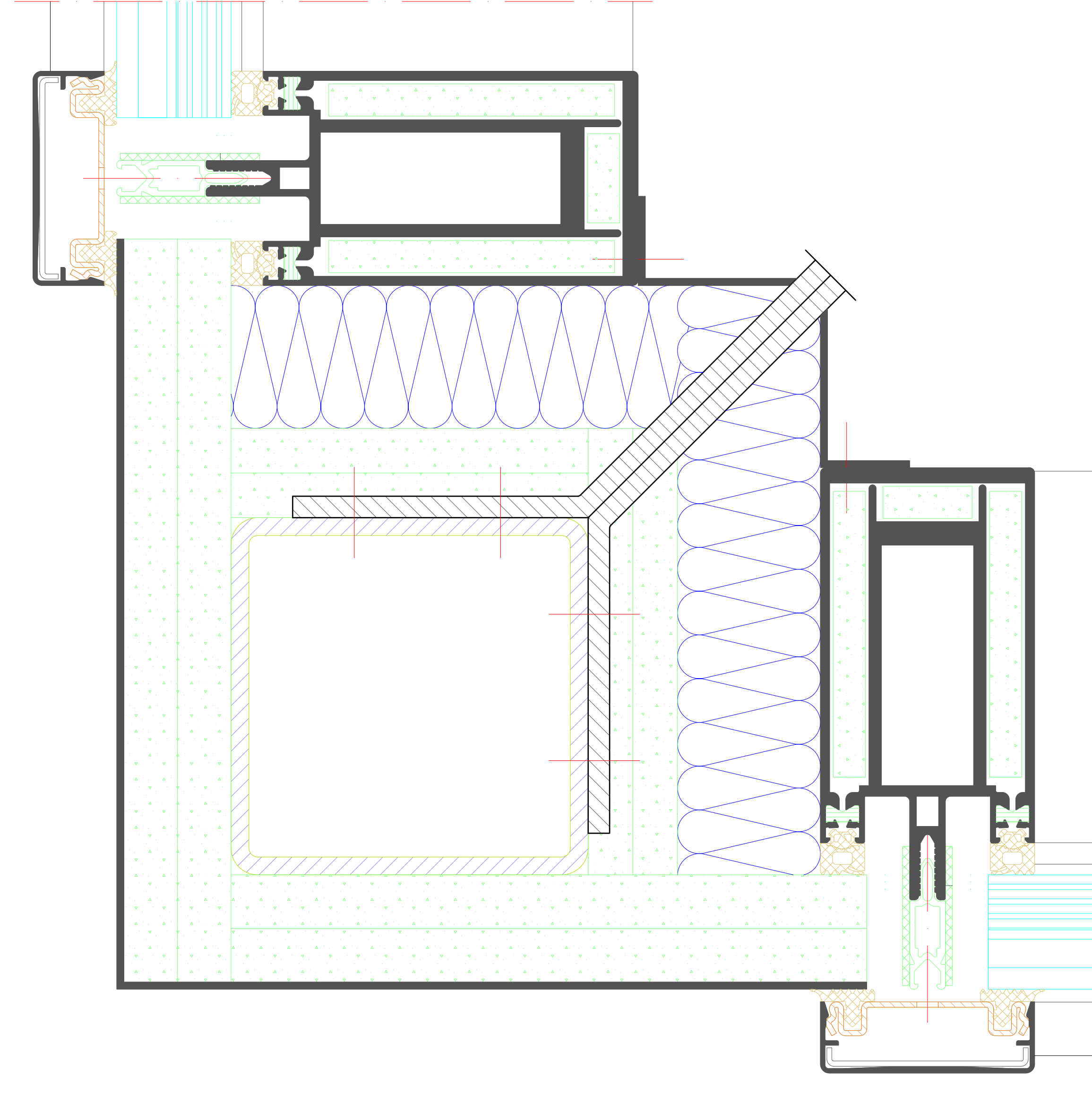
Innenecke
Inner corner



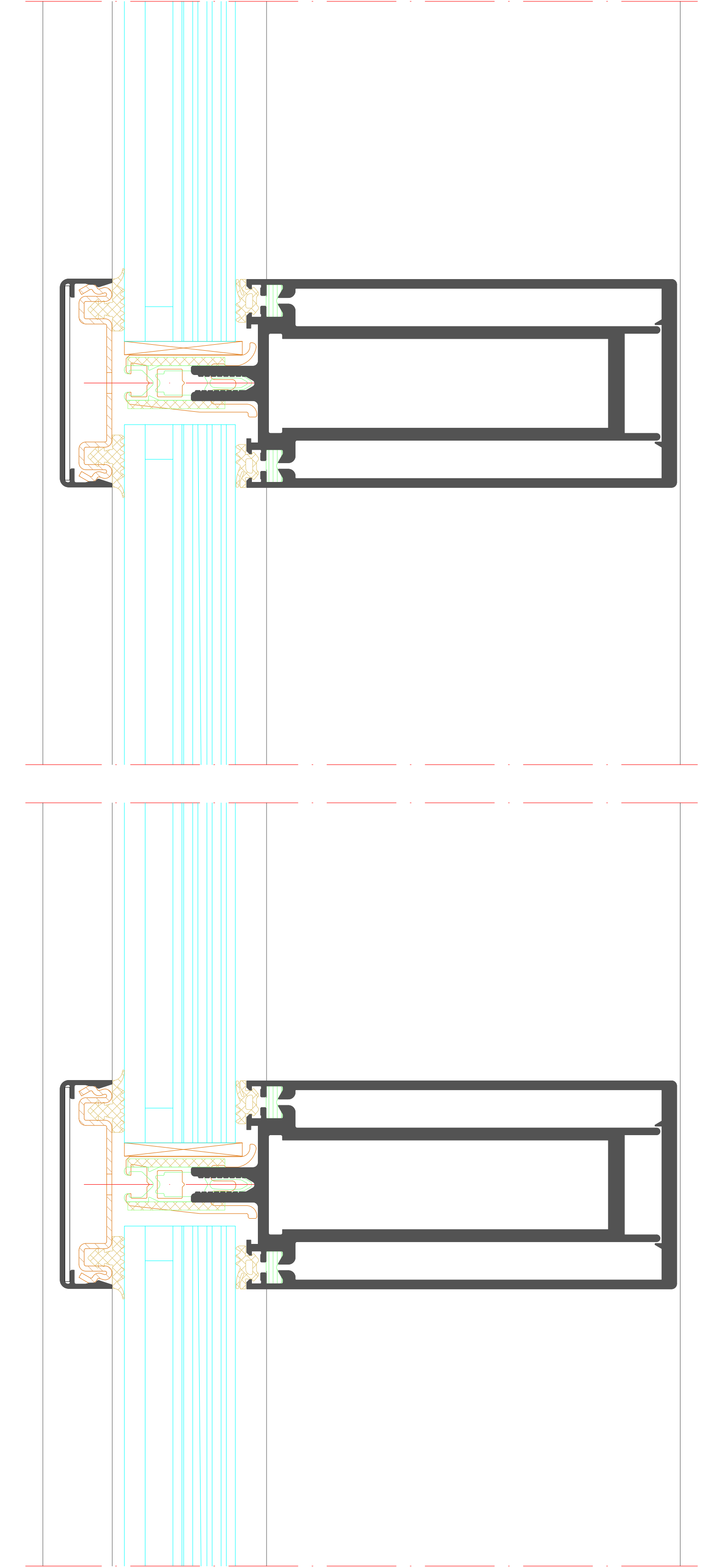
90° Außenecke
90° outer corner

5

Außenecke
Outer corner



3

[illegible]

Segmentierung
Faceting

Technische Informationen

Technical Information

Prüfungen und Normen

Tests and standards

Wärmedämmung nach DIN EN ISO 10077-2 *	$U_f = > 1,1 \text{ W}/(\text{m}^2\text{K})$
Thermal insulation in accordance with DIN EN ISO 10077-2	
Feuerwiderstand nach EN 13501-2	Klasse EW 30/ EI 30
Fire resistance in accordance with EN 13501-2	Class EW 30/ EI 30
Einbruchhemmung nach DIN V ENV 1627	Klasse WK2 / RC2
Burglar resistance in accordance with DIN V ENV 1627	Class WK2 / RC2
Luftdurchlässigkeit nach DIN EN 12152	Klasse AE
Air permeability in accordance with DIN EN 12152	Class AE
Schlagregendichtheit nach DIN EN 12155	Klasse RE 1200
Watertightness in accordance with DIN EN 12155	Class RE 1200
Windlastwiderstand nach EN 12179	$\pm 1,2 \text{ kN}/\text{m}^2$
Wind load resistance in accordance with EN 12179	$\pm 1,8 \text{ kN}/\text{m}^2$
Stoßfestigkeit DIN EN 14019, Belastung von innen / außen	Klasse I5 / E5
Impact resistance DIN EN 14019, load from inside / outside	Class I5 / E5

* Bewertung/Berechnung der Wärmedurchgangskoeffizienten U_{cw} eines Vorhangfassadenelements ist gemäß prEN 13947 durchzuführen.
Assessment/calculation of the U_{cw} thermal transmittance of a curtain wall unit must be carried out in accordance with prEN 13947.

★★ Die Angaben beschreiben die Bestwerte des Gesamtsystems.
Die Eigenschaften einer jeweils gewählten Ausführungsvariante oder
Elementkombination sind im Einzelfall anhand der ausführlichen
Prüfdokumentation zu bestimmen.

The information describes the optimum values of the entire system.
The properties of a selected design option or unit combination have to be determined individually based on the comprehensive test documentation.

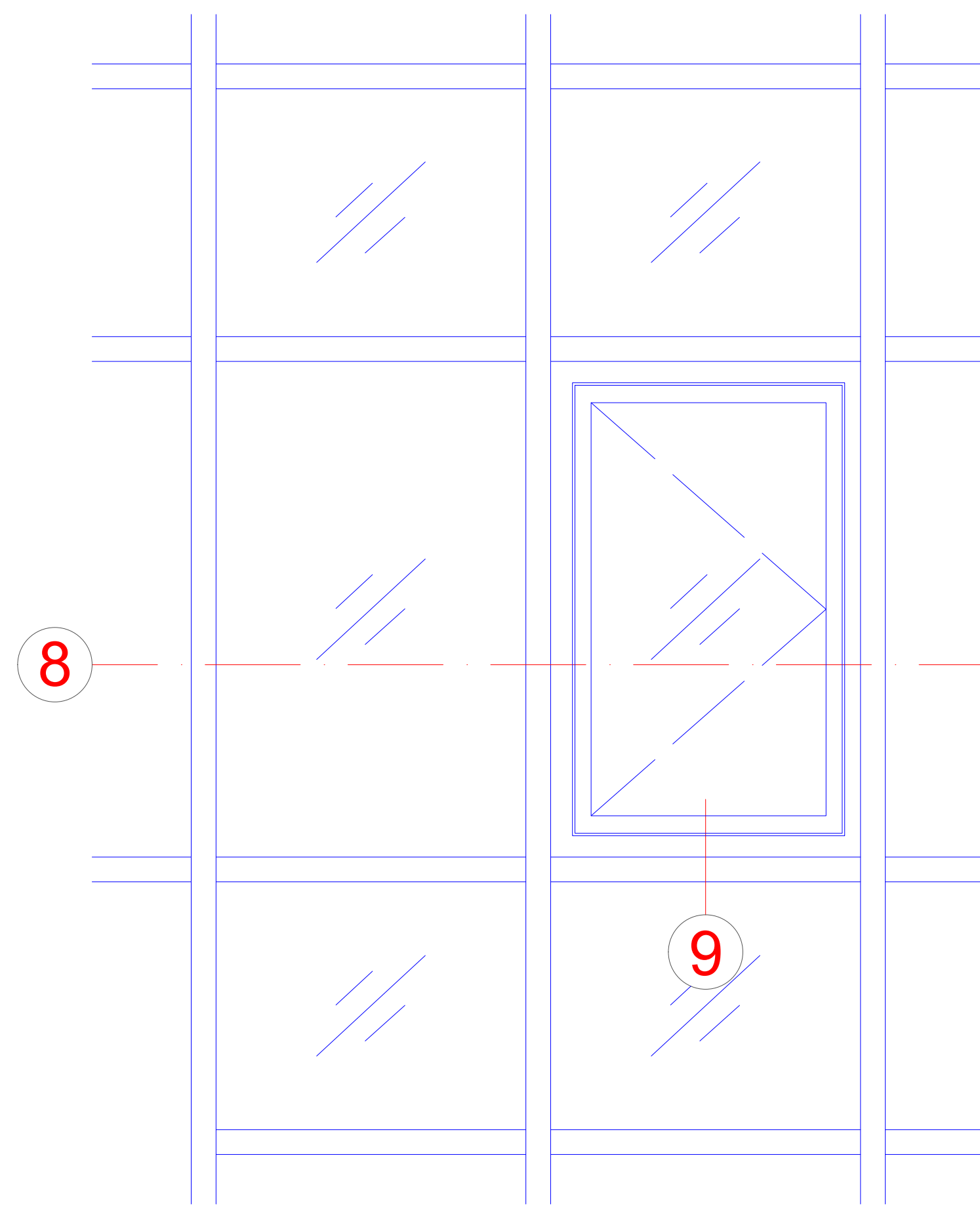
A detailed technical cross-section diagram of a window assembly. The diagram illustrates the internal structure, including the frame, glazing, and various insulation layers. Key features include a central air gap, multiple layers of insulation (indicated by different hatching patterns like green dots and blue wavy lines), and structural elements like the sill and head. Red dashed lines indicate the thermal envelope or air leakage paths. The diagram is labeled with various technical specifications and dimensions.

e 90° -270°
outer corner

The drawing illustrates the assembly of a window frame at an outer corner. The left portion is a cross-sectional view showing the frame's internal structure, including a central cavity, insulation (indicated by green dots), and a drainage channel at the bottom. The right portion is a perspective view of the corner joint, showing how two frame sections meet. It highlights the use of corner brackets and the application of a sealant (indicated by a blue hatched area) to ensure a watertight fit. A red dashed line indicates the plane of the joint.

A detailed technical cross-section diagram of a window assembly. The diagram shows a central glass pane held within a frame. The frame is composed of multiple layers, including a dark outer frame and a lighter inner frame. The glass is shown with a green dot pattern, likely representing a low-emissivity (low-E) coating. The assembly is surrounded by insulation, depicted with a cross-hatched pattern. The diagram also shows the window's connection to the building structure, including the sill and the surrounding wall. Various components are labeled with letters and numbers, such as 'A', 'B', 'C', 'D', 'E', 'F', 'G', 'H', 'I', 'J', 'K', 'L', 'M', 'N', 'O', 'P', 'Q', 'R', 'S', 'T', 'U', 'V', 'W', 'X', 'Y', 'Z', '1', '2', '3', '4', '5', '6', '7', '8', '9', '10', '11', '12', '13', '14', '15', '16', '17', '18', '19', '20', '21', '22', '23', '24', '25', '26', '27', '28', '29', '30', '31', '32', '33', '34', '35', '36', '37', '38', '39', '40', '41', '42', '43', '44', '45', '46', '47', '48', '49', '50', '51', '52', '53', '54', '55', '56', '57', '58', '59', '60', '61', '62', '63', '64', '65', '66', '67', '68', '69', '70', '71', '72', '73', '74', '75', '76', '77', '78', '79', '80', '81', '82', '83', '84', '85', '86', '87', '88', '89', '90', '91', '92', '93', '94', '95', '96', '97', '98', '99', '100', '101', '102', '103', '104', '105', '106', '107', '108', '109', '110', '111', '112', '113', '114', '115', '116', '117', '118', '119', '120', '121', '122', '123', '124', '125', '126', '127', '128', '129', '130', '131', '132', '133', '134', '135', '136', '137', '138', '139', '140', '141', '142', '143', '144', '145', '146', '147', '148', '149', '150', '151', '152', '153', '154', '155', '156', '157', '158', '159', '160', '161', '162', '163', '164', '165', '166', '167', '168', '169', '170', '171', '172', '173', '174', '175', '176', '177', '178', '179', '180', '181', '182', '183', '184', '185', '186', '187', '188', '189', '190', '191', '192', '193', '194', '195', '196', '197', '198', '199', '200', '201', '202', '203', '204', '205', '206', '207', '208', '209', '210', '211', '212', '213', '214', '215', '216', '217', '218', '219', '220', '221', '222', '223', '224', '225', '226', '227', '228', '229', '230', '231', '232', '233', '234', '235', '236', '237', '238', '239', '240', '241', '242', '243', '244', '245', '246', '247', '248', '249', '250', '251', '252', '253', '254', '255', '256', '257', '258', '259', '260', '261', '262', '263', '264', '265', '266', '267', '268', '269', '270', '271', '272', '273', '274', '275', '276', '277', '278', '279', '280', '281', '282', '283', '284', '285', '286', '287', '288', '289', '290', '291', '292', '293', '294', '295', '296', '297', '298', '299', '300', '301', '302', '303', '304', '305', '306', '307', '308', '309', '310', '311', '312', '313', '314', '315', '316', '317', '318', '319', '320', '321', '322', '323', '324', '325', '326', '327', '328', '329', '330', '331', '332', '333', '334', '335', '336', '337', '338', '339', '340', '341', '342', '343', '344', '345', '346', '347', '348', '349', '350', '351', '352', '353', '354', '355', '356', '357', '358', '359', '360', '361', '362', '363', '364', '365', '366', '367', '368', '369', '370', '371', '372', '373', '374', '375', '376', '377', '378', '379', '380', '381', '382', '383', '384', '385', '386', '387', '388', '389', '390', '391', '392', '393', '394', '395', '396', '397', '398', '399', '400', '401', '402', '403', '404', '405', '406', '407', '408', '409', '410', '411', '412', '413', '414', '415', '416', '417', '418', '419', '420', '421', '422', '423', '424', '425', '426', '427', '428', '429', '430', '431', '432', '433', '434', '435', '436', '437', '438', '439', '440', '441', '442', '443', '444', '445', '446', '447', '448', '449', '450', '451', '452', '453', '454', '455', '456', '457', '458', '459', '460', '461', '462', '463', '464', '465', '466', '467', '468', '469', '470', '471', '472', '473', '474', '475', '476', '477', '478', '479', '480', '481', '482', '483', '484', '485', '486', '487', '488', '489', '490', '491', '492', '493', '494', '495', '496', '497', '498', '499', '500', '501', '502', '503', '504', '505', '506', '507', '508', '509', '510', '511', '512', '513', '514', '515', '516', '517', '518', '519', '520', '521', '522', '523', '524', '525', '526', '527', '528', '529', '530', '531', '532', '533', '534', '535', '536', '537', '538', '539', '540', '541', '542', '543', '544', '545', '546', '547', '548', '549', '550', '551', '552', '553', '554', '555', '556', '557', '558', '559', '560', '561', '562', '563', '564', '565', '566', '567', '568', '569', '570', '571', '572', '573', '574', '575', '576', '577', '578', '579', '580', '581', '582', '583', '584', '585', '586', '587', '588', '589', '590', '591', '592', '593', '594', '595', '596', '597', '598', '599', '600', '601', '602', '603', '604', '605', '606', '607', '608', '609', '610', '611', '612', '613', '614', '615', '616', '617', '618', '619', '620', '621', '622', '623', '624', '625', '626', '627', '628', '629', '630', '631', '632', '633', '634', '635', '636', '637', '638', '639', '640', '641', '642', '643', '644', '645', '646', '647', '648', '649', '650', '651', '652', '653', '654', '655', '656', '657', '658', '659', '660', '661', '662', '663', '664', '665', '666', '667', '668', '669', '670', '671', '672', '673', '674', '675', '676', '677', '678', '679', '680', '681', '682', '683', '684', '685', '686', '687', '688', '689', '690', '691', '692', '693', '694', '695', '696', '697', '698', '699', '700', '701', '702', '703', '704', '705', '706', '707', '708', '709', '710', '711', '712', '713', '714', '715', '716', '717', '718', '719', '720', '721', '722', '723', '724', '725', '726', '727', '728', '729', '730', '731', '732', '733', '734', '735', '736', '737', '738', '739', '740', '741', '742', '743', '744', '745', '746', '747', '748', '749', '750', '751', '752', '753', '754', '755', '756', '757', '758', '759', '760', '761', '762', '763', '764', '765', '766', '767', '768', '769', '770', '771', '772', '773', '774', '775', '776', '777', '778', '779', '780', '781', '782', '783', '784', '785', '786', '787', '788', '789', '790', '791', '792', '793', '794', '795', '796', '797', '79

RIVA AWS 60 / 70 FR 30 insert unit



Technical Information AWS 60 / 70 FR 30

Tests and standards

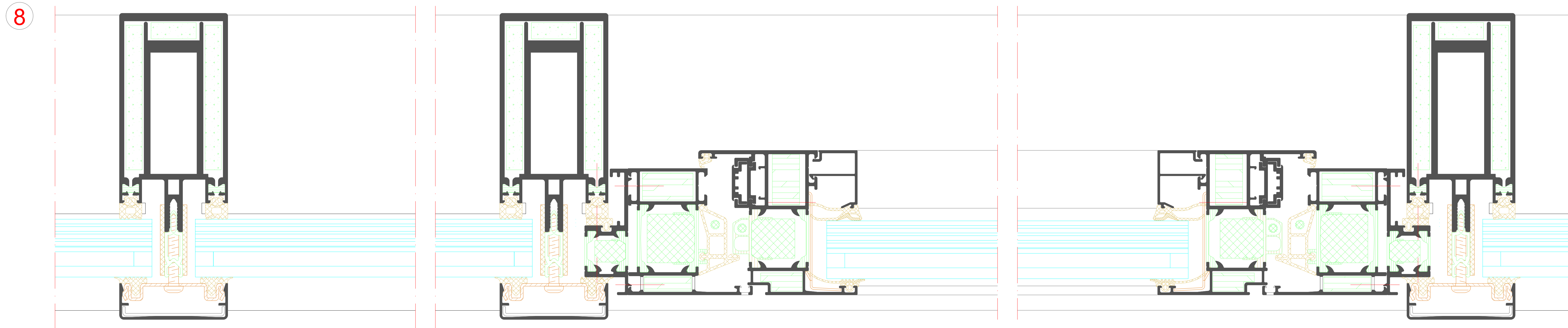
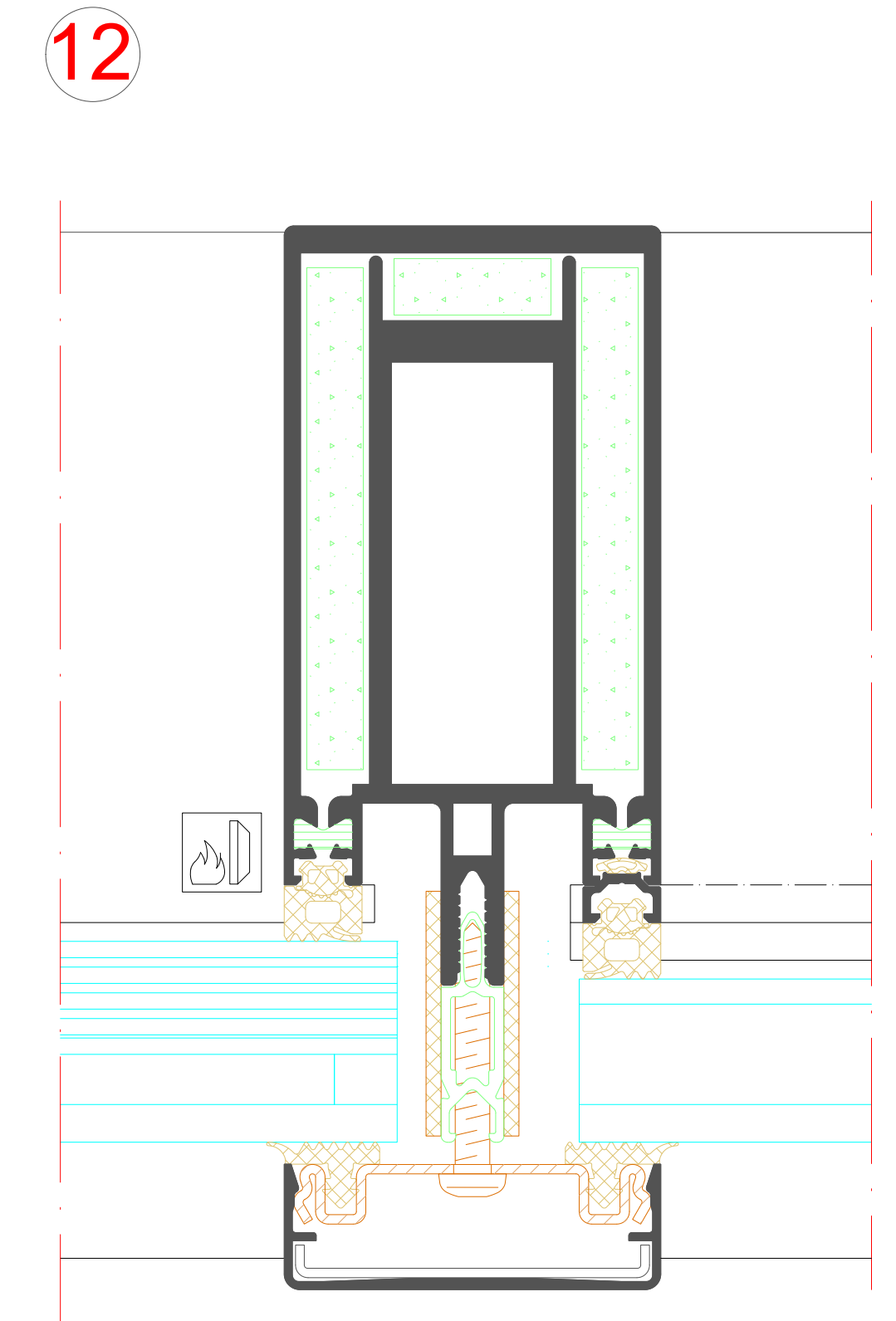
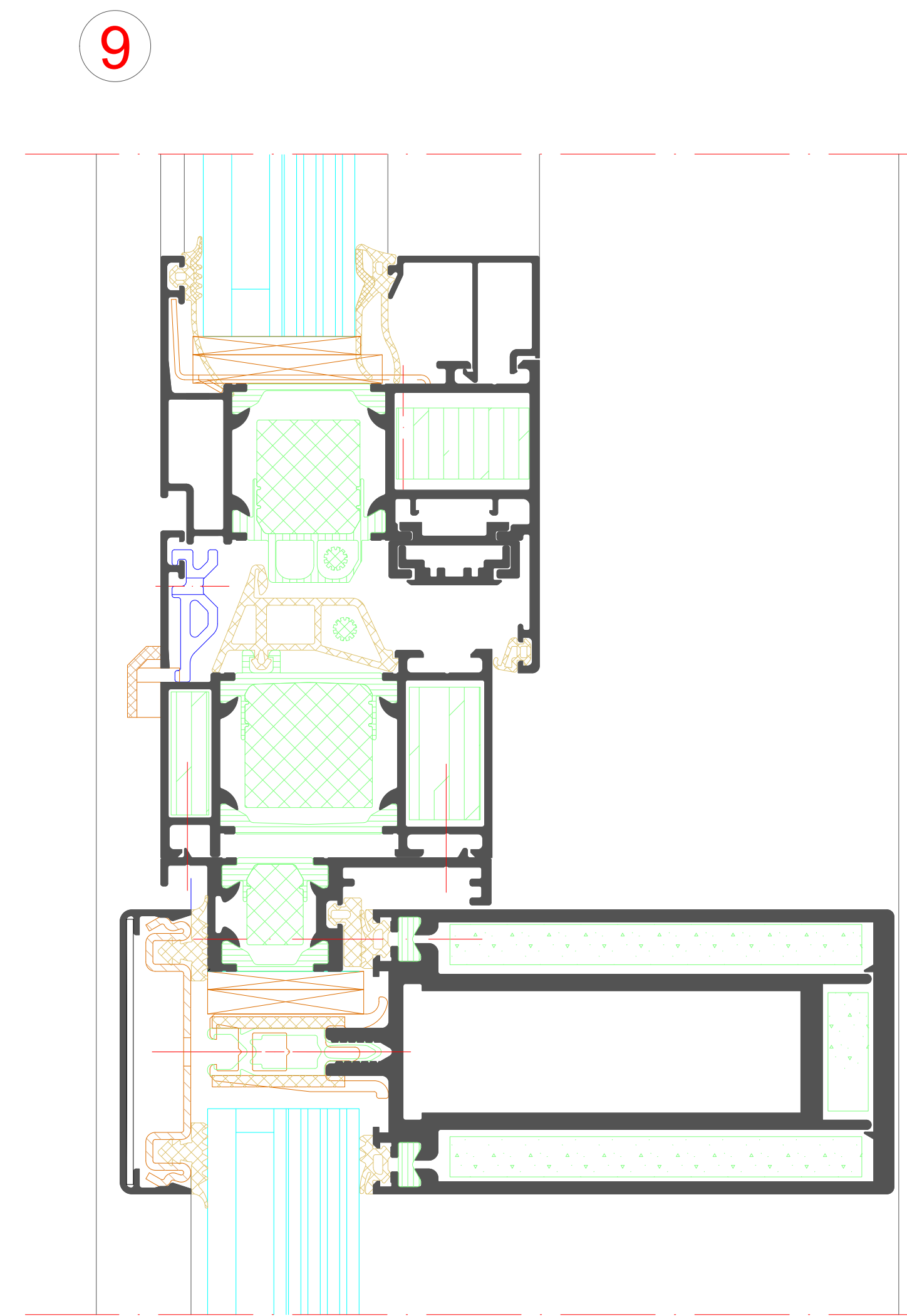
Wärmedämmung nach DIN EN ISO 10077-2 *	
Thermal insulation in accordance with DIN EN ISO 10077-2	$U_f = > 2,7 \text{ W}/(\text{m}^2\text{K})$
Feuerwiderstand nach EN 13501-2	Klasse EW 30/ EI 30
Fire resistance in accordance with EN 13501-2	Class EW 30/ EI 30
Luftdurchlässigkeit nach DIN EN 12152	Klasse 4
Air permeability in accordance with DIN EN 12152	Class 4
Schlagregendichtheit nach DIN EN 12155	Klasse 9A
Watertightness in accordance with DIN EN 12155	Class 9A
Windlastwiderstand nach EN 12179	Klasse C5/B5
Wind load resistance in accordance with EN 12179	Class C5 / B5

*** Die Angaben beschreiben die Bestwerte des Gesamtsystems.
Die Eigenschaften einer jeweils gewählten Ausführungsvariante oder
Elementkombination sind im Einzelfall anhand der ausführlichen
Prüfdokumentation zu bestimmen.

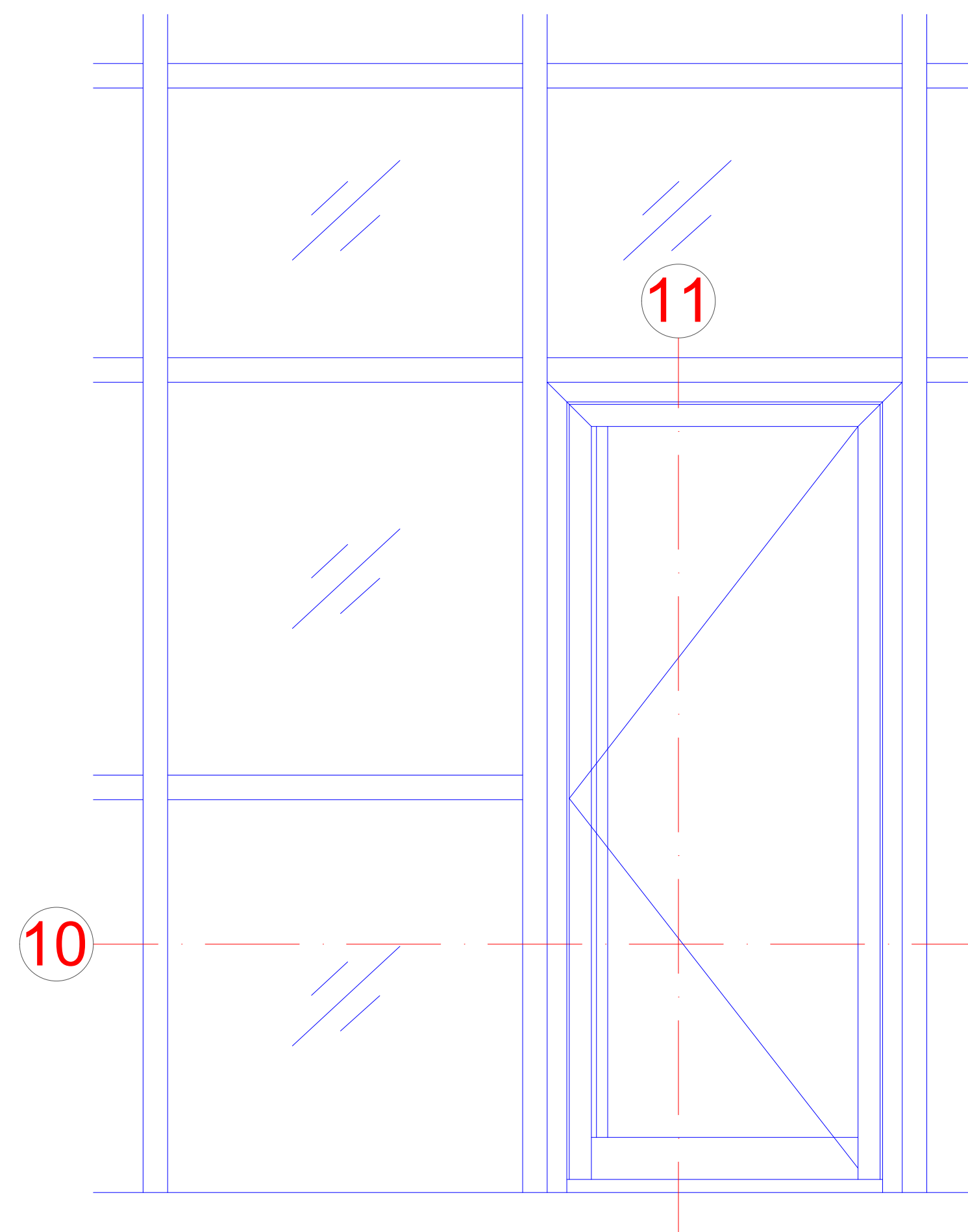
The information describes the optimum values of the entire system.
The properties of a selected design option or unit combination have to be determined individually based on the comprehensive test documentation.

A 3x3 grid with a red circle containing the number 9 in the bottom-right cell.

The diagram shows a fire compartment layout. On the left is a brick wall. A fire source (flame icon) is located in the bottom left. A door is located in the bottom center. A fire extinguisher is located in the bottom right. A red circle with the number 12 is placed near the door. The compartment is divided into sections by blue lines, and a red dashed line indicates a boundary.



RIVA ADS 80 FR 30 insert unit



Technical information about ADS 80 FR 30

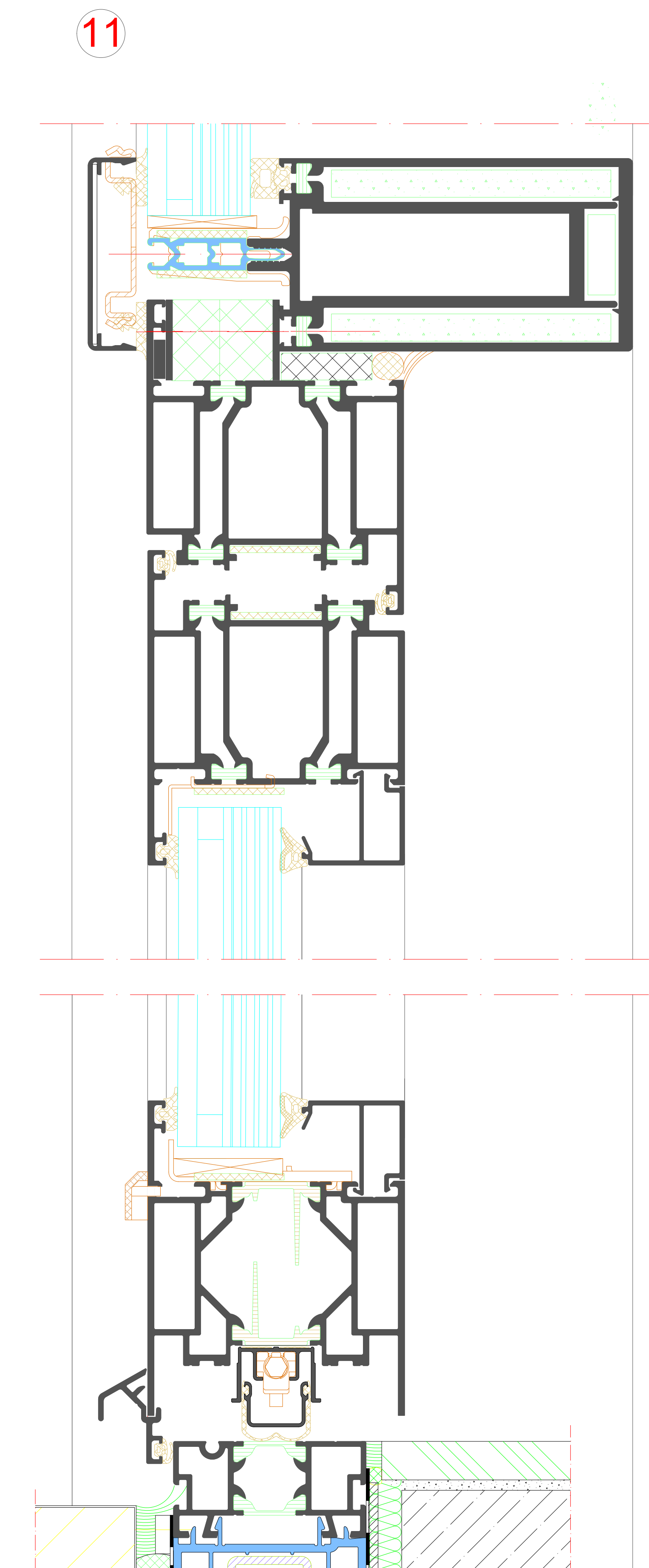
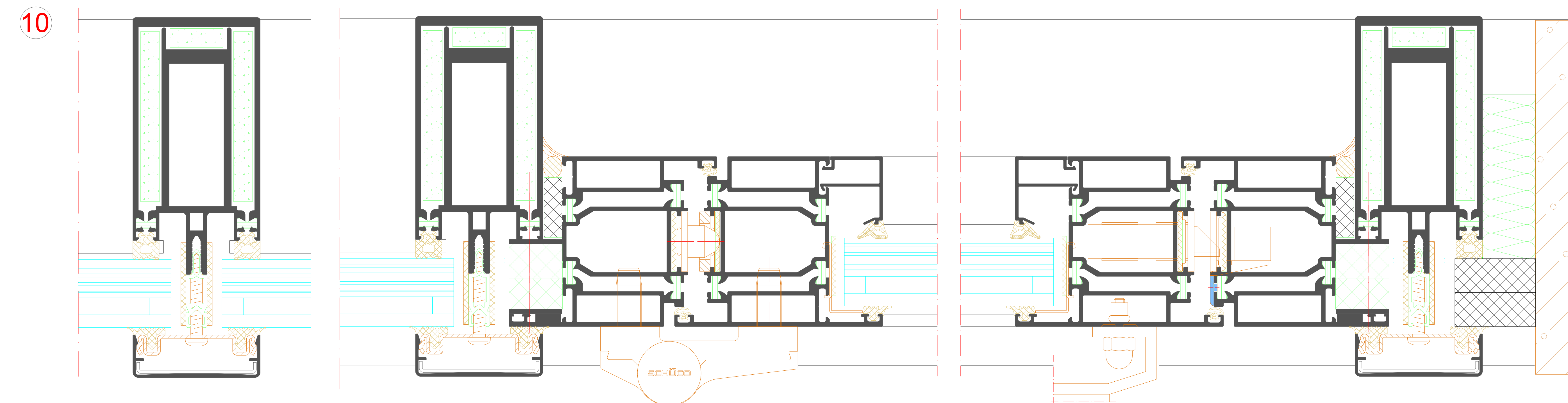
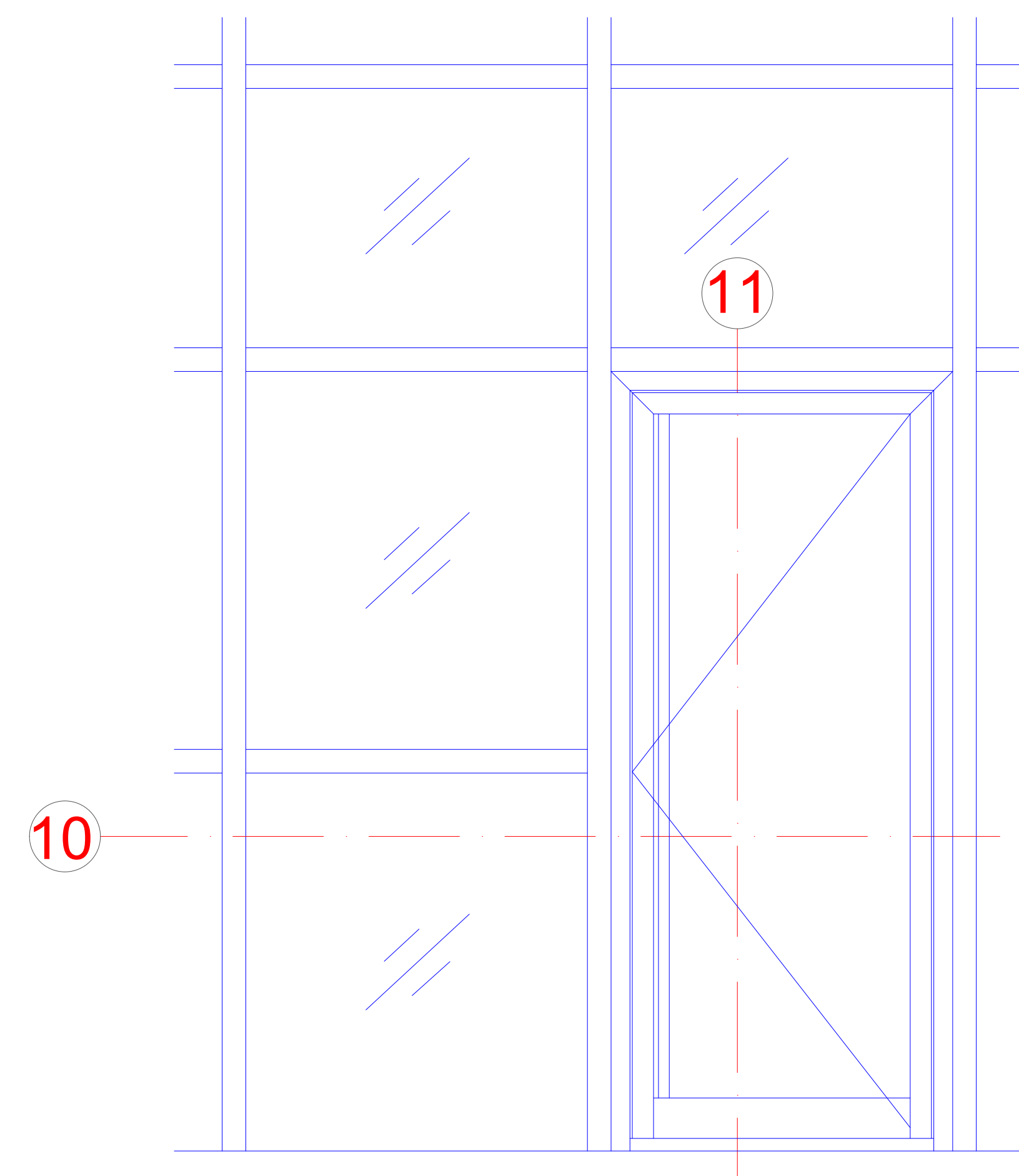
Tests and standards

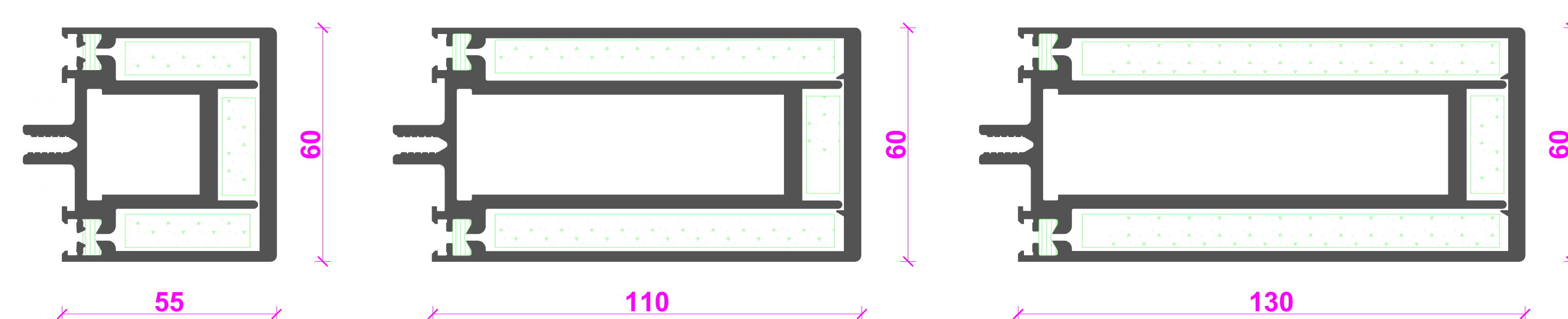
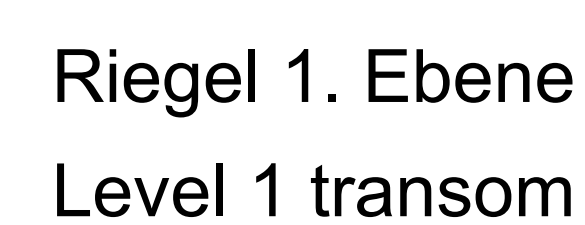
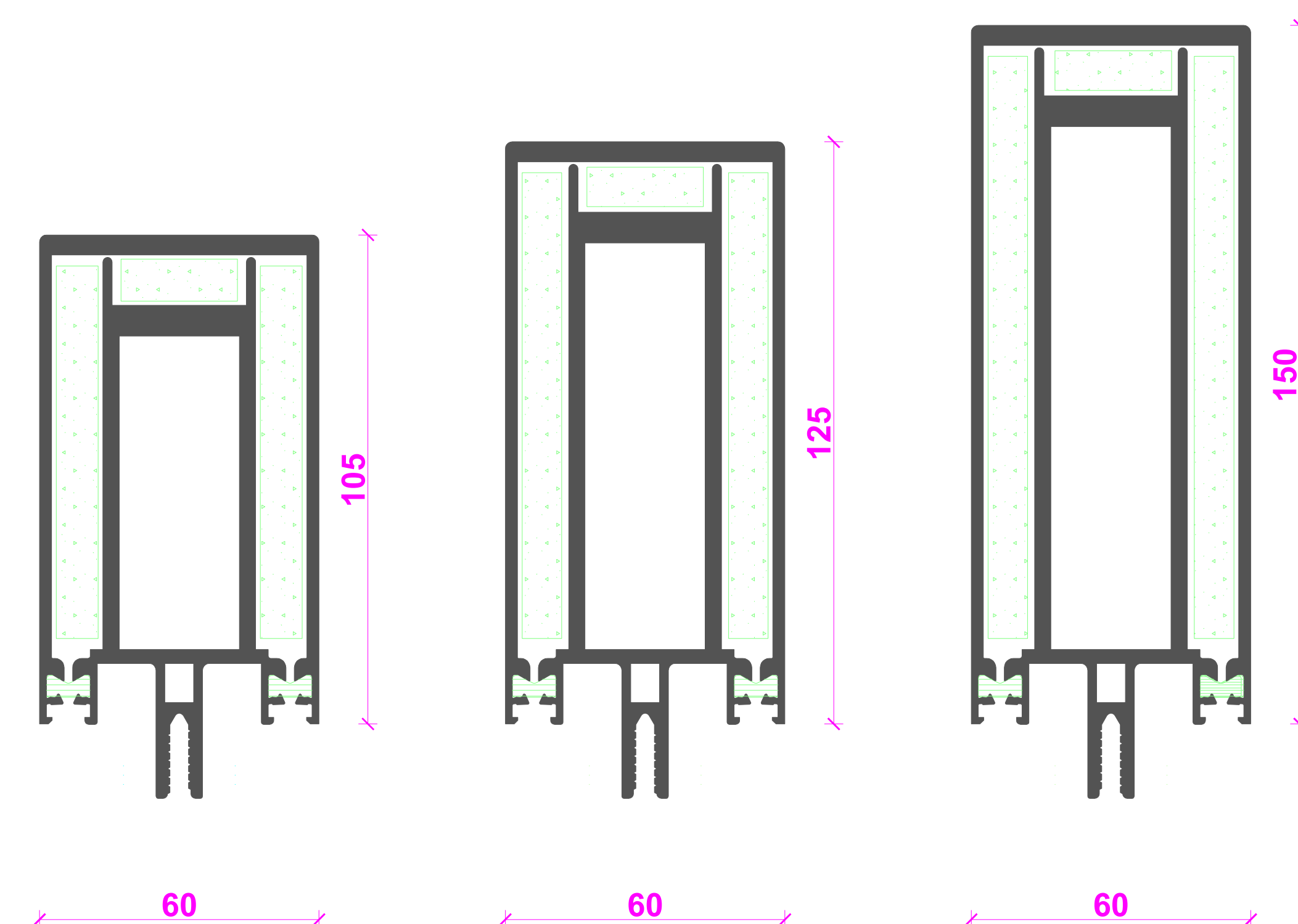
Wärmedämmung nach DIN EN ISO 1077-2	Uf = 1,9 -4,1 W/(m²K)
Thermal insulation in accordance with DIN EN ISO 1077-2	
Schalldämmung nach DIN EN ISO 140-3	bis Rw 46 dB
Sound reduction in accordance with DIN EN ISO 140-3	Up to Rw 46 dB
Einbruchhemmung nach DIN V ENV 1627	Klasse WK2 (RC 2)
Burglar resistance in accordance with DIN V ENV 1627	Class WK2 (RC 2)
Luftdurchlässigkeit nach DIN EN 12207	Klasse 4
Air permeability in accordance with DIN EN 12207	Class 4
Schlagregendichtheit nach DIN EN 12208	Klasse 9a
Watertightness in accordance with DIN EN 12208	Class 9a
Windlastwiderstand nach DIN EN 12210 *	Klasse C3/B2
Wind load resistance in accordance with DIN EN 12210	Class C3 / B2
Mechanische Festigkeit nach DIN EN 1192	Klasse 4
Mechanical strength in accordance with DIN EN 1192	Class 4
Dauerfunktion nach DIN EN 12400	Klasse 8
Resistance to repeated opening and closing in accordance with DIN EN 12400	Class 8

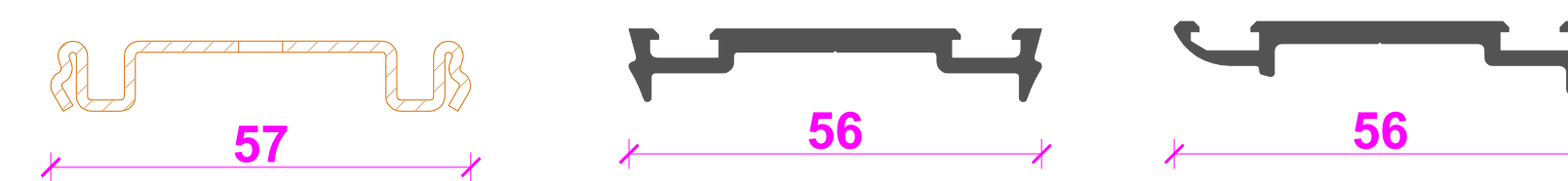
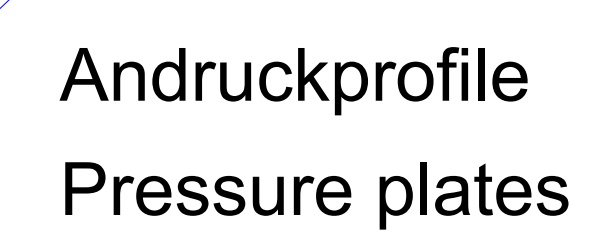
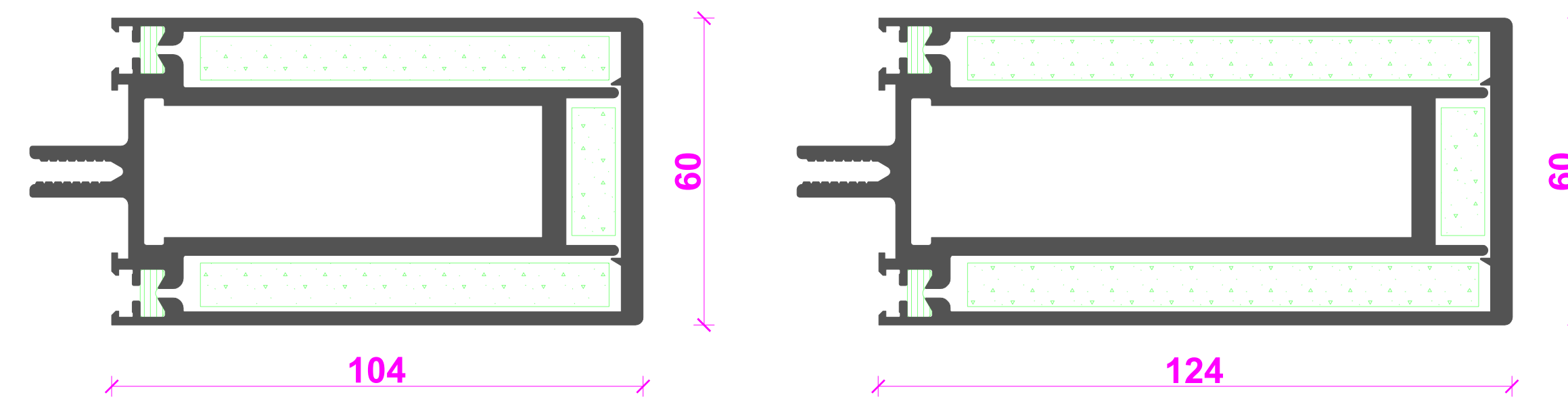
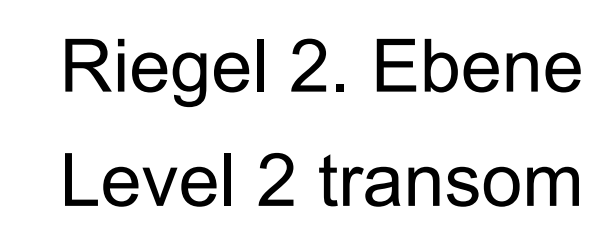
****** Die Angaben beschreiben die Bestwerte des Gesamtsystems.
Die Eigenschaften einer jeweils gewählten Ausführungsvariante oder Elementkombination sind im Einzelfall anhand der ausführlichen Prüfdokumentation zu bestimmen.

The information describes the optimum values of the entire system.
The properties of a selected design option or unit combination have to be determined individually based on the comprehensive test documentation.

Einsatzelement RIVA ADS 80 FR 30
RIVA ADS 80 FR 30 insert unit

[illegible]







Technical drawing of a shower tray with a width of 60 cm and a depth of 15 cm. The drawing shows the top view of the tray with a central drain and four side drains. Dimensions are provided for the overall width (60 cm), overall depth (15 cm), and the width of the central and side drains. The central drain width is 230.090 cm, and the side drain width is 230.158 cm. The overall width of the tray is 202.769 cm. The height of the tray is 162.180 cm. The height of the central drain is 434.460 cm. The height of the side drains is 434.470 cm. The height of the tray is 434.480 cm. The height of the central drain is 434.490 cm.

