

Technische Informationen

Technical information

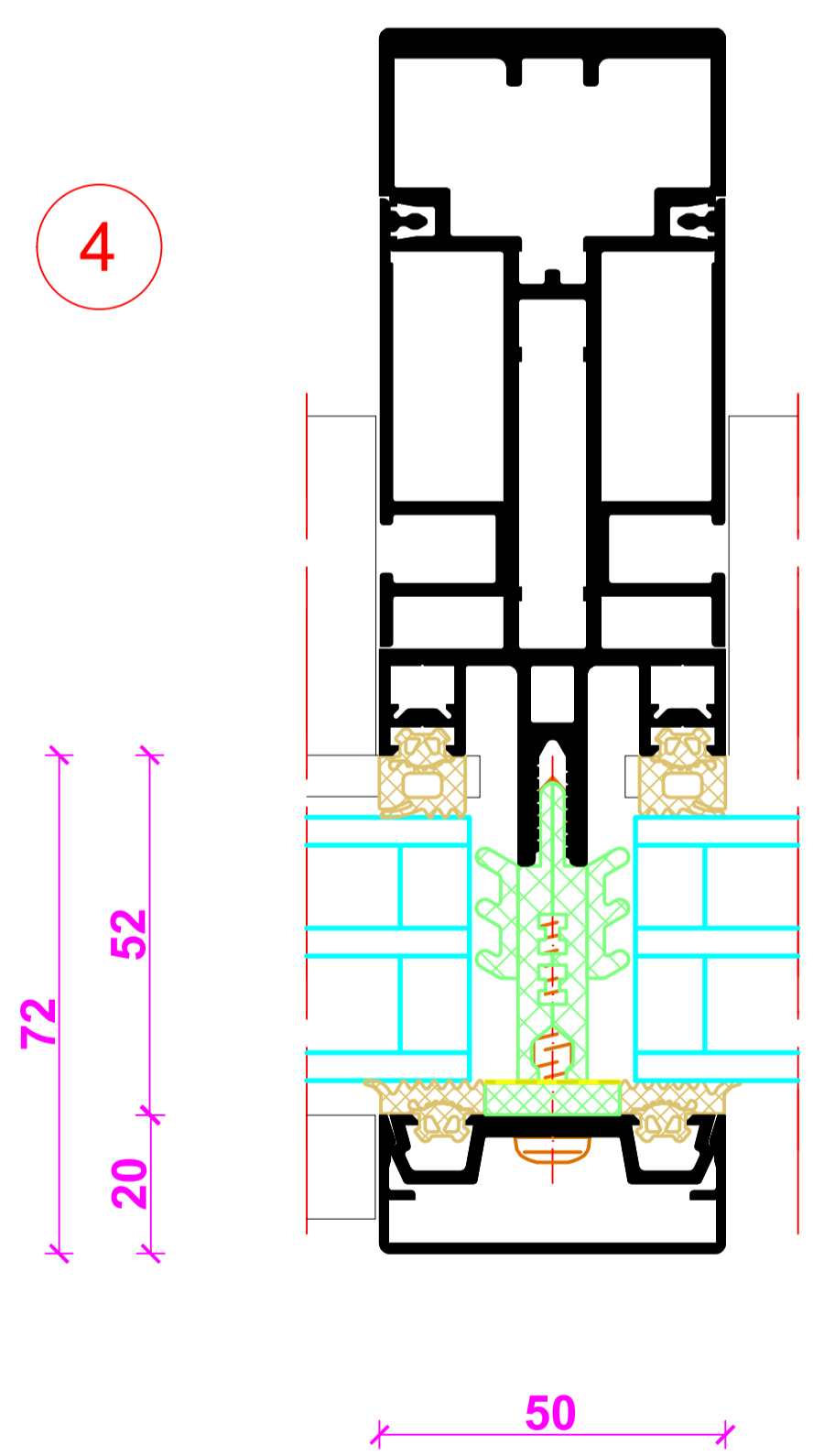
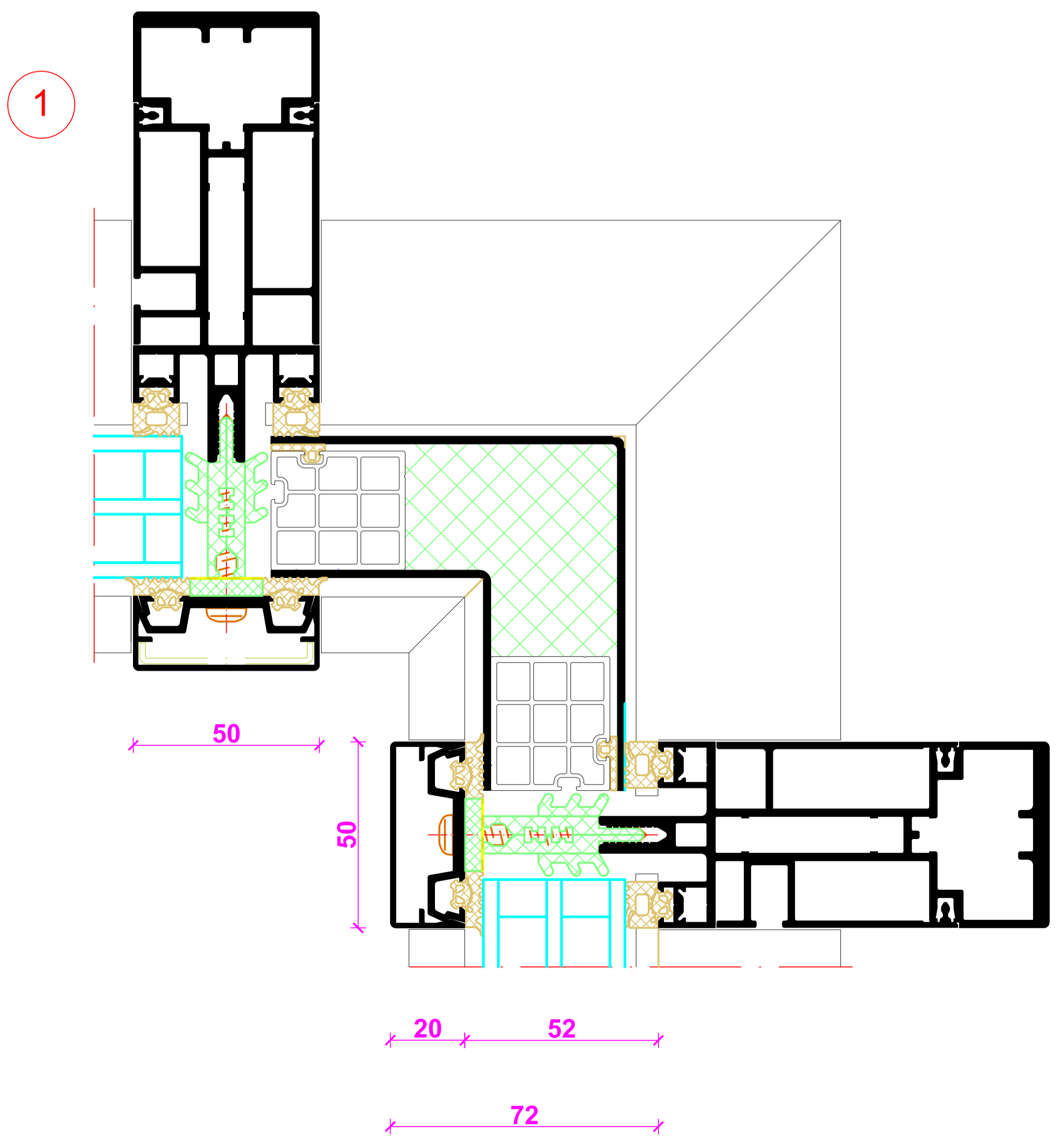
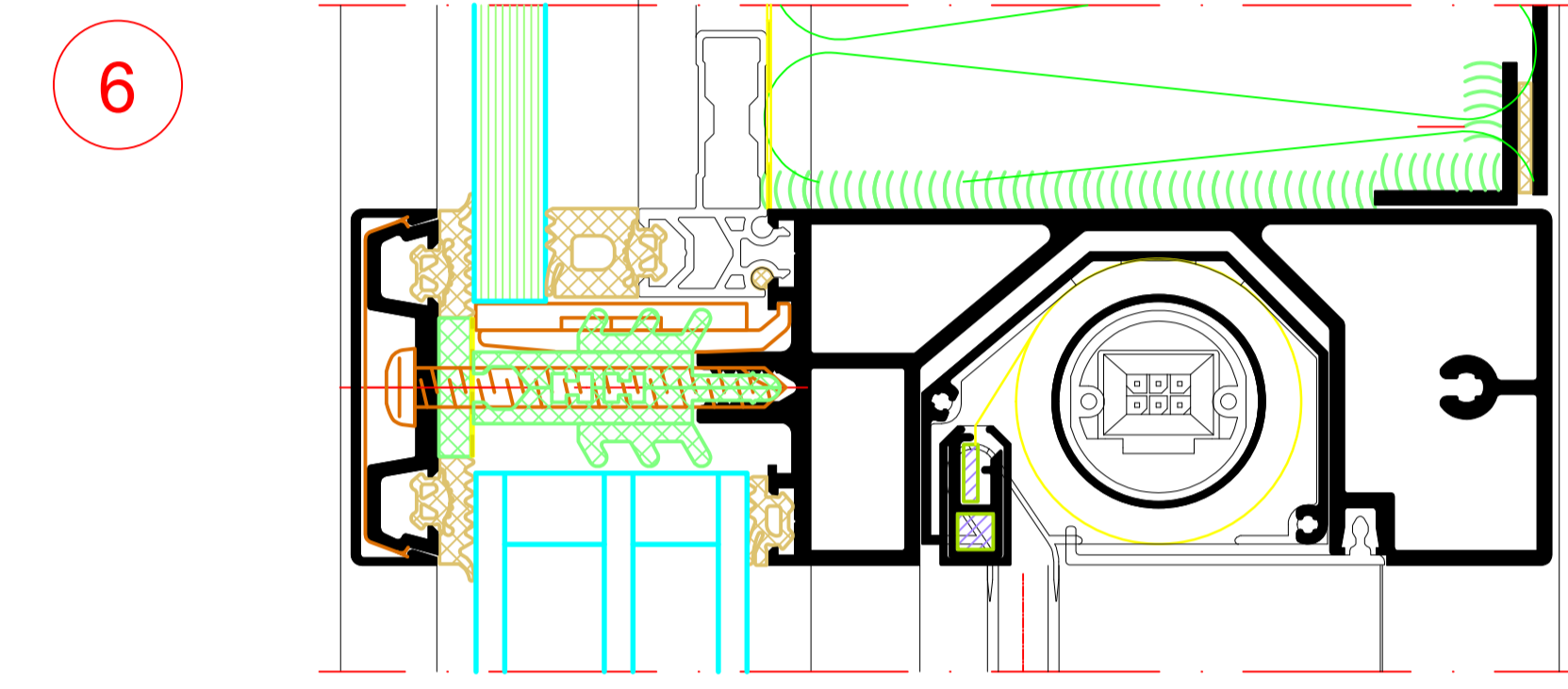
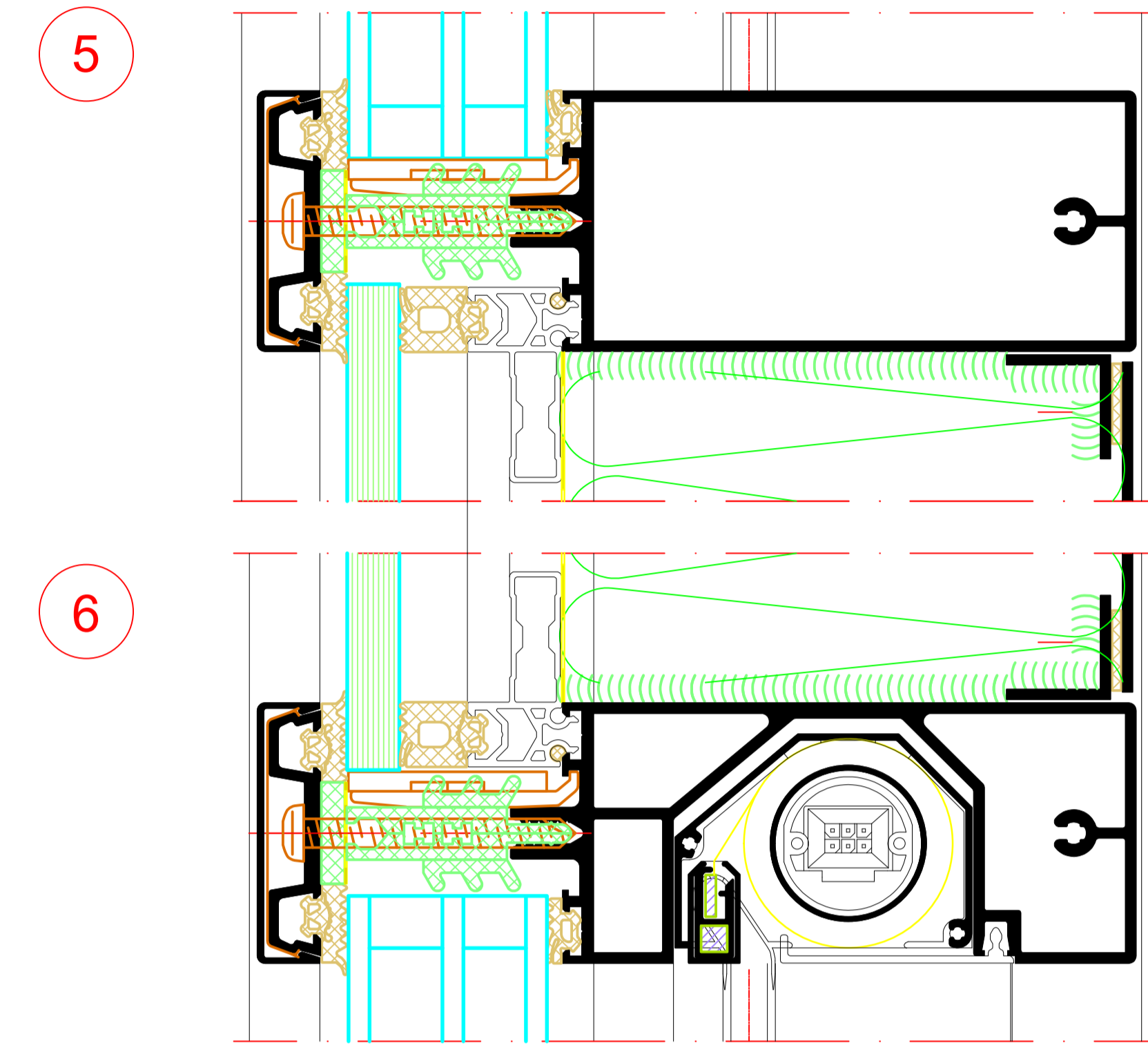
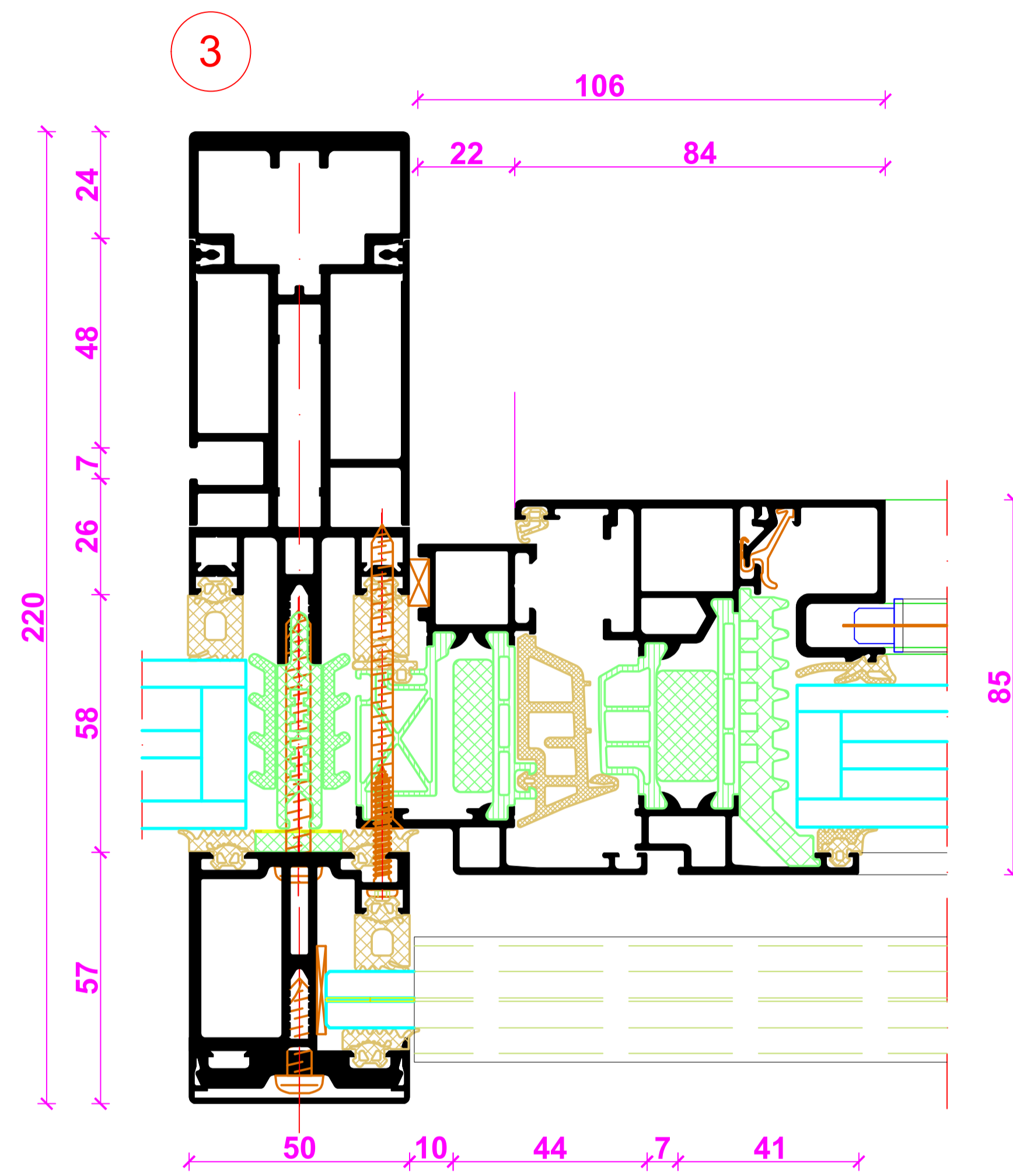
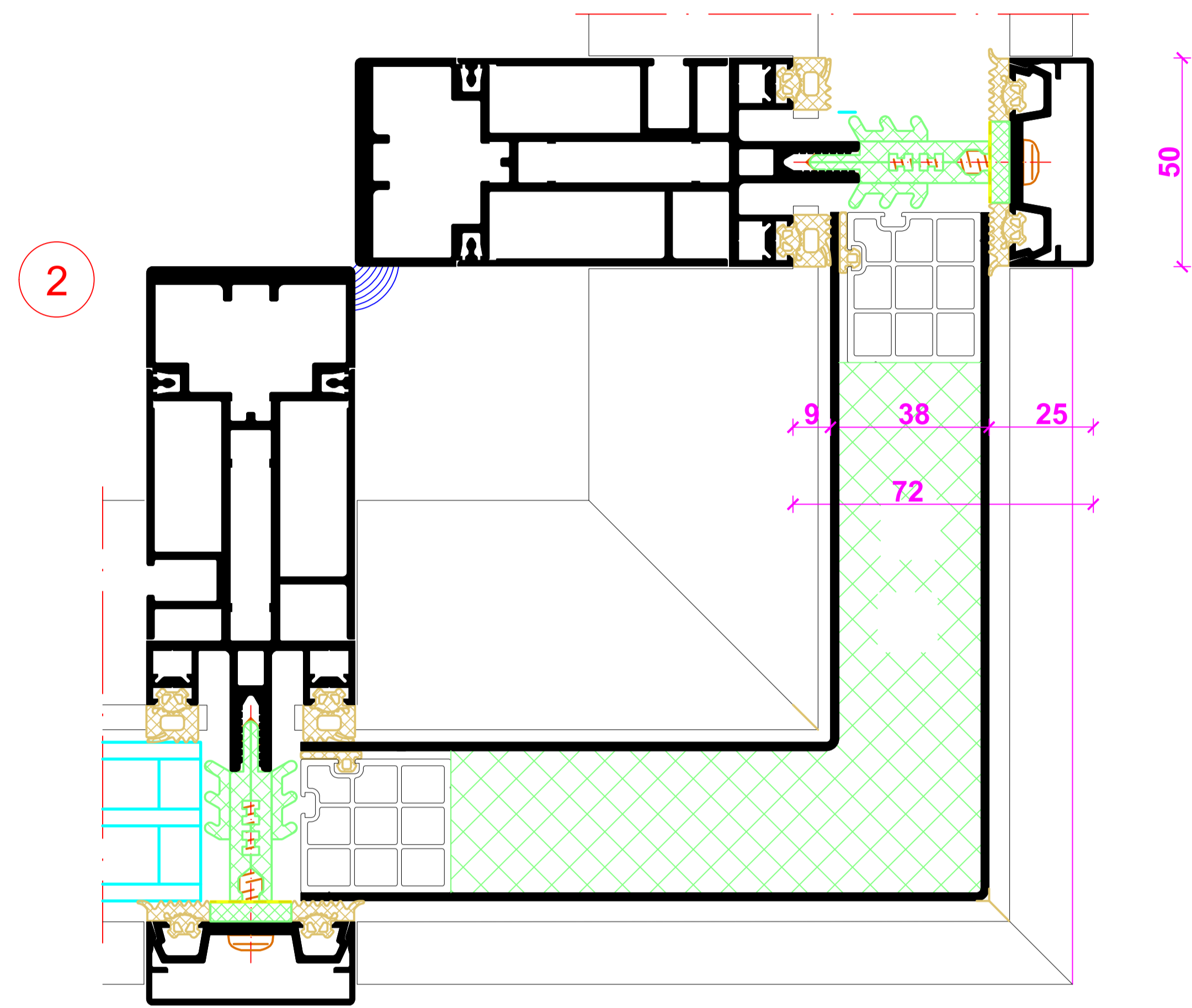
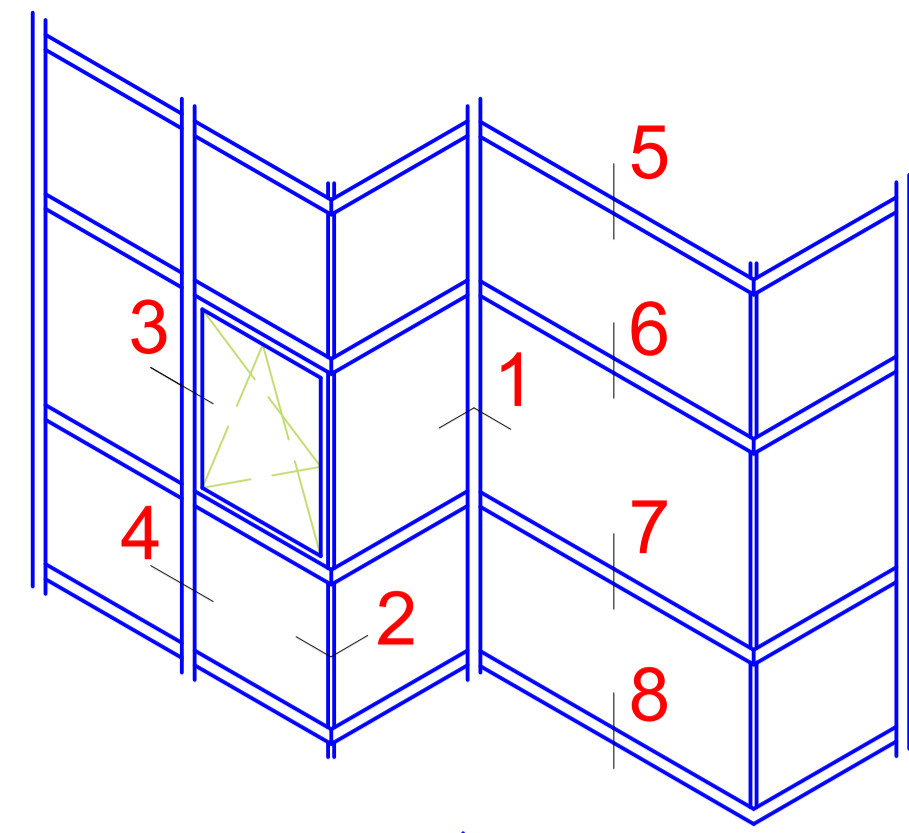
Prüfungen und Normen *

Tests and standards

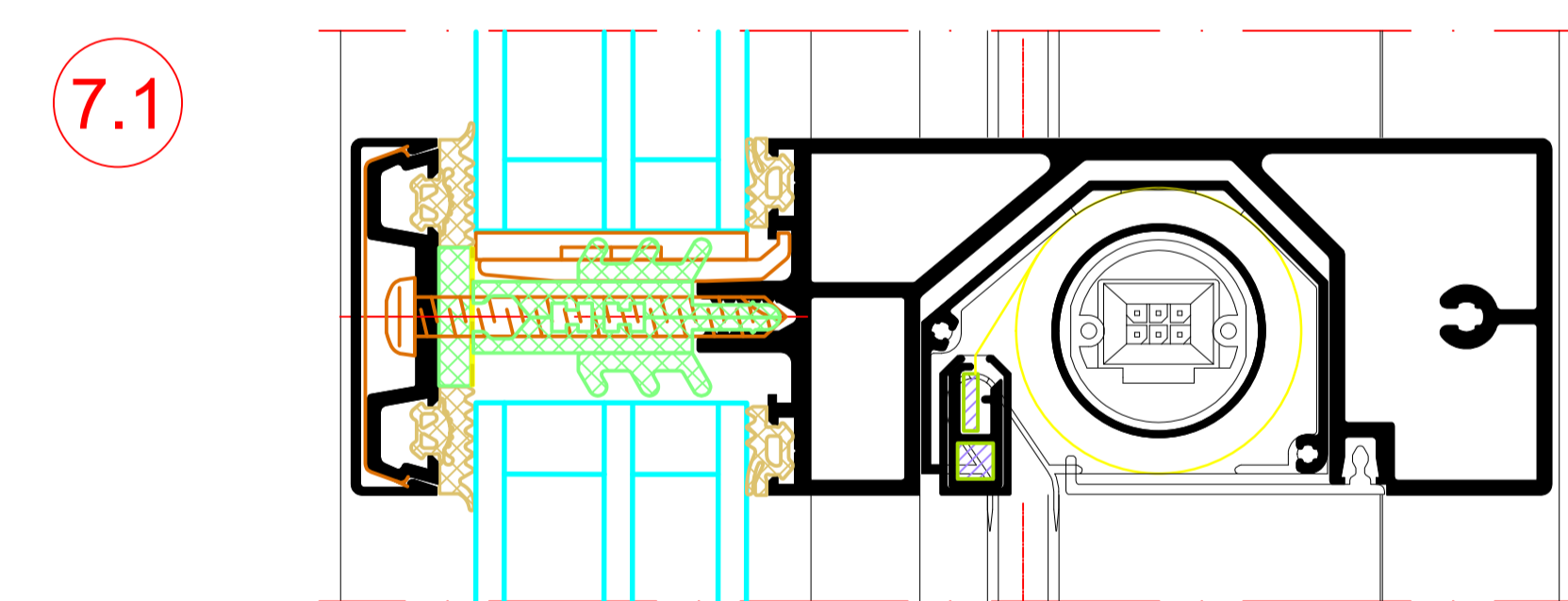
Minimale Breite, maximale Breite Minimum width, maximum width	Materialabhängig (Textil / Folie) Dependent on material (textile / film)
Minimale Höhe, maximale Höhe Minimum height, maximum height	Materialabhängig (Textil / Folie) Dependent on material (textile / film)
Material Behang Material for blind	Textil / Folie Textile / film
Antrieb Drive	Elektrisch electric
Motor Motor	24 V DC SMI 24 V DC SMI
Funktion Function	Sonnen-, Blend-, und Sichtschutz bei gleichzeitigem Außenbezug (Werte sind abhängig vom Folien oder Stofftyp) Sun shading, glare protection and screening whilst providing views to the outside (values are dependent on the type of film or material)
Windabhängigkeit Dependence on wind	unabhängig Not dependent
Laufrichtung Opening direction	Kette - von oben nach unten Motor - von oben nach unten Chain - from top to bottom Motor - from top to bottom

Integralmaster

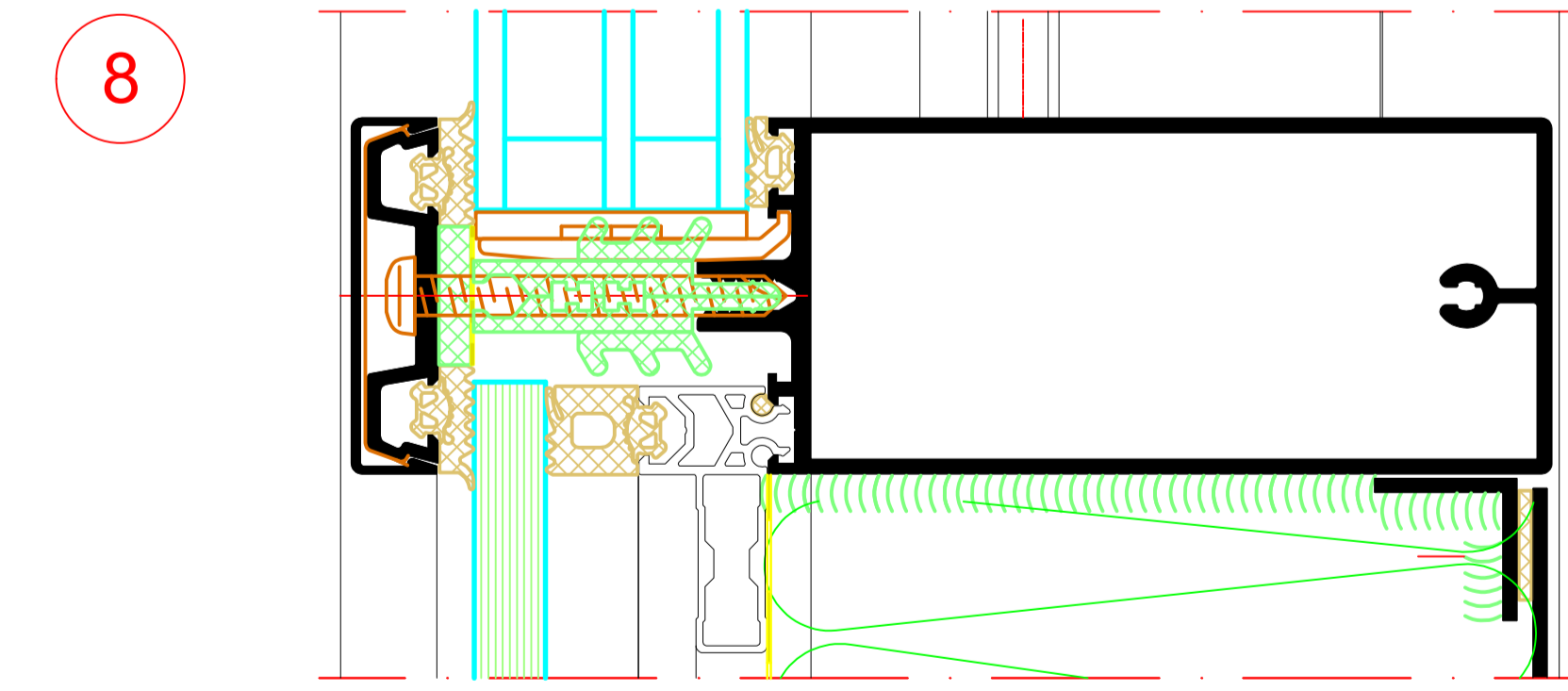
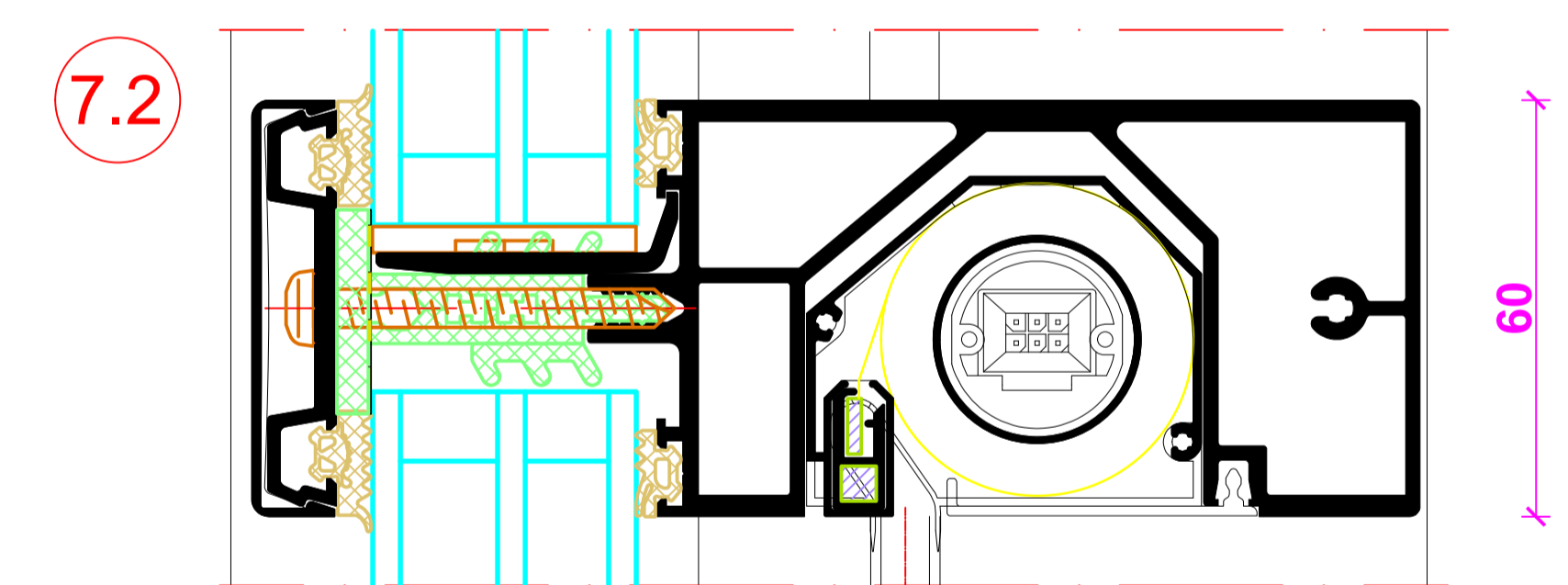
- * Die Angaben beschreiben die Bestwerte des Gesamtsystems. Die Eigenschaften einer jeweils gewählten Ausführungsvariante oder Elementkombination sind im Einzelfall anhand der ausführlichen Prüfdokumentation zu bestimmen. Geltende Vorschriften und Richtlinien der Arbeitsstättenrichtlinie werden erfüllt.
The information describes the optimum values of the entire system. The properties of a selected design option or unit combination have to be determined individually based on the comprehensive test documentation. All applicable guidelines and regulations of the workplace guidelines are fulfilled.



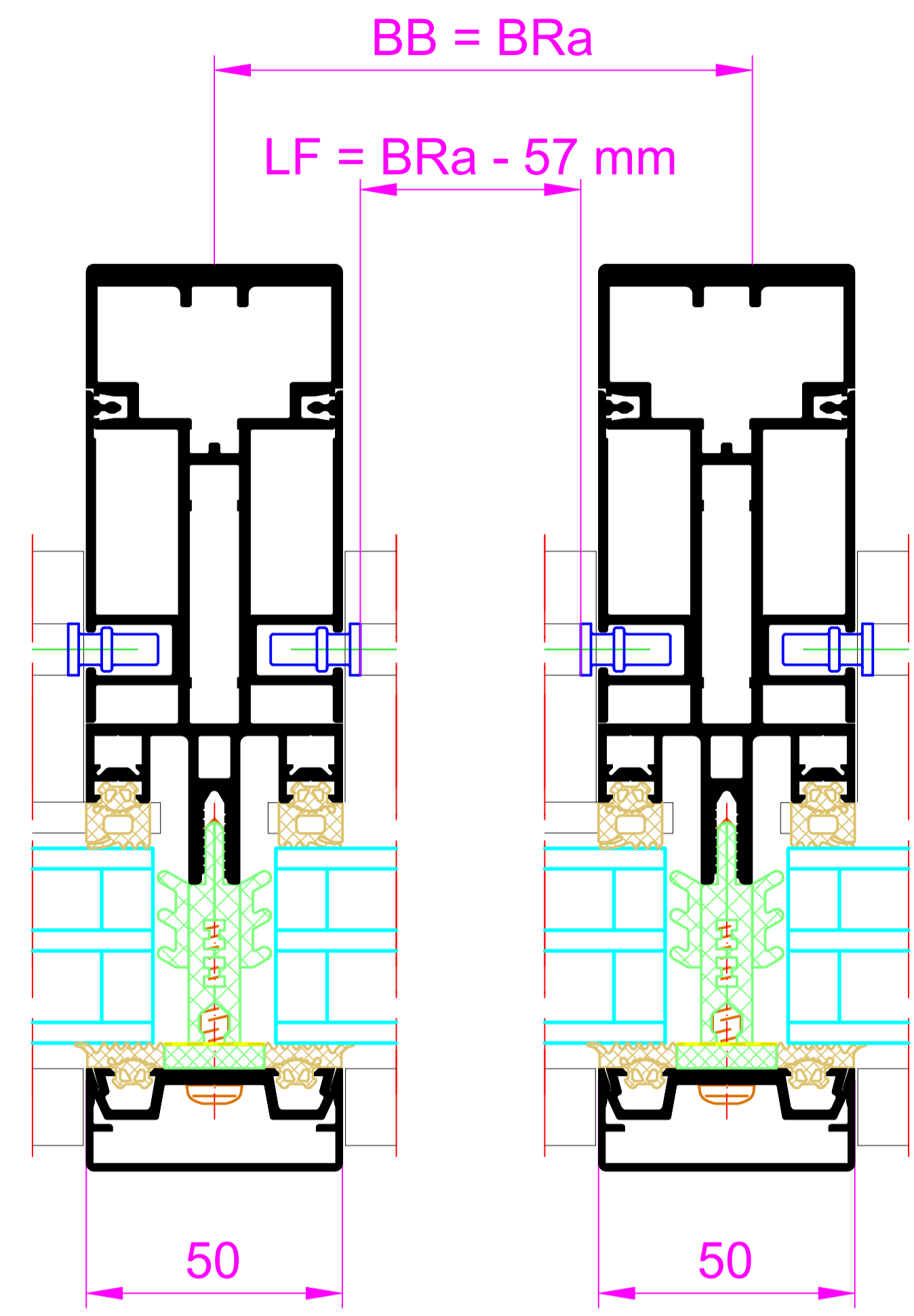
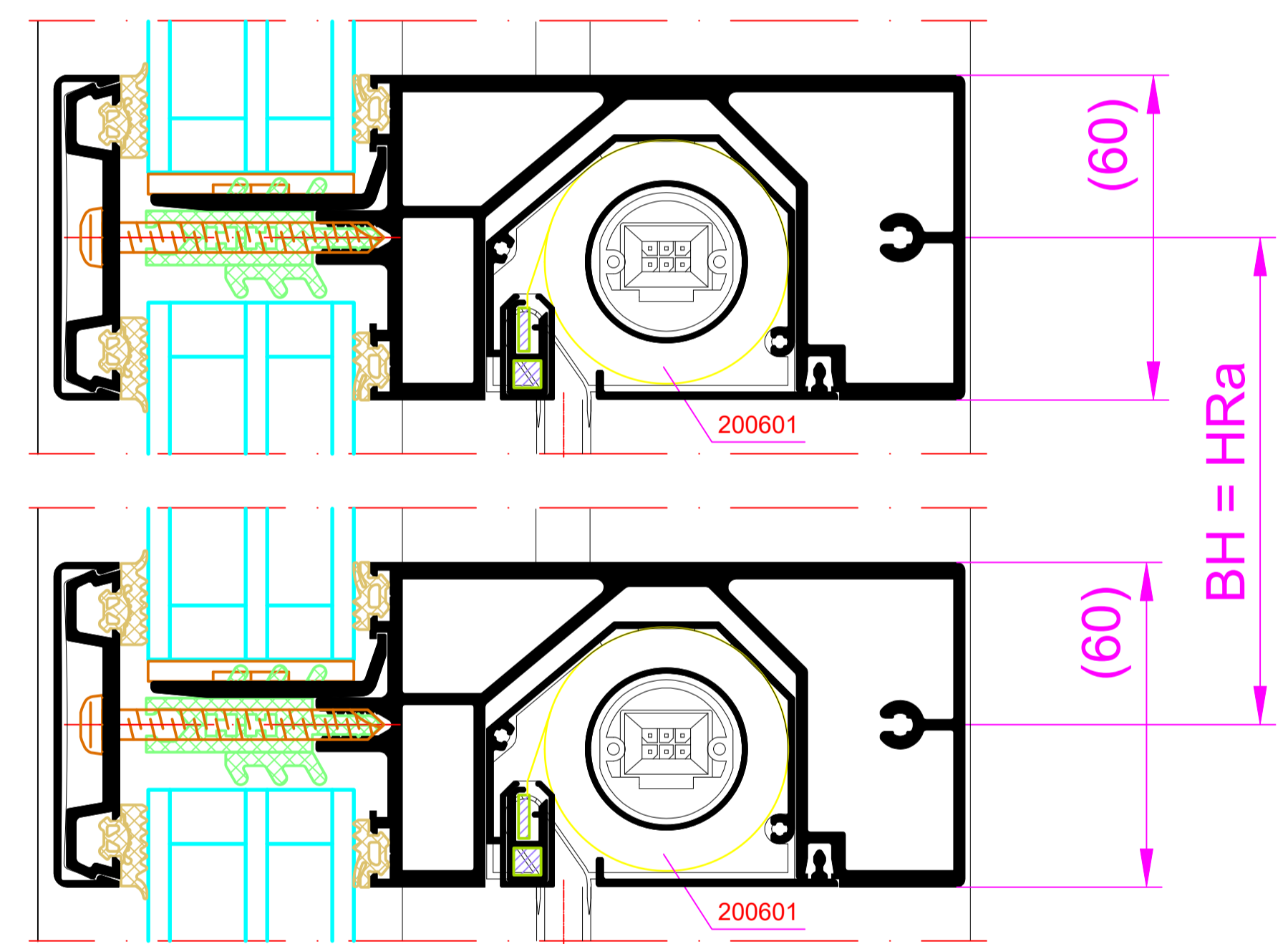
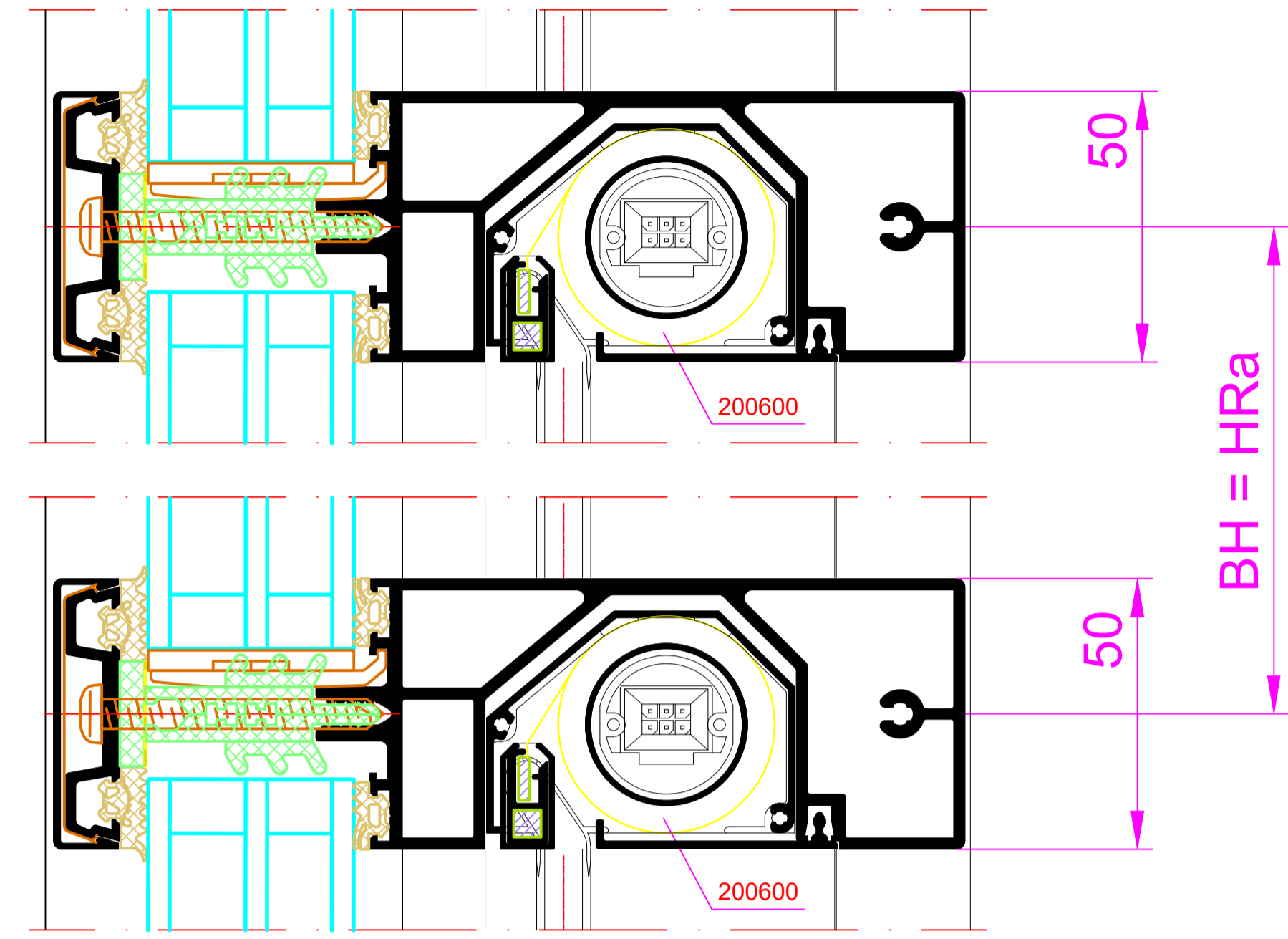
Integralmaster 50



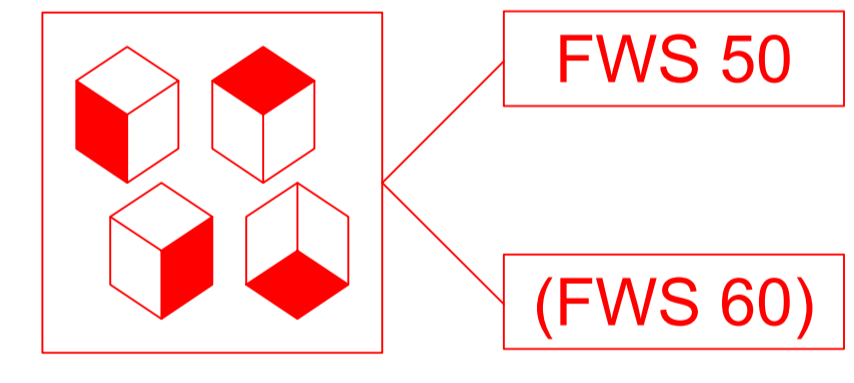
Integralmaster 60



NO.	DATE	REVISION	DESIGNED	CHECKED
001	2024	01	BENEDICT	RIVA
RIVA Elementschritte RIVA Unit-section details				
Sonenschutz RIVA Integralmaster in FWS 50/60 Sun Shielding RIVA Integralmaster in FWS 50/60				
BENEDICT + RIVA				
BENEDICT + RIVA GmbH Krauss-Landau, Germany				



	200600
	200601



BH: Bestellhöhe
 HRa: Höhe Raster
 BB: Bestellbreite
 BRa: Breite Raster
 LF: Länge Fallstab
 HB: Bestellhöhe
 HRa: Höhe Raster
 BB: Bestellbreite
 BRa: Breite Raster
 LF: Länge Fallstab
 HB: Bestellhöhe
 HRa: Höhe Raster
 BB: Bestellbreite
 BRa: Breite Raster
 LF: Länge Fallstab

