

Einsatzelemente sind in Fassadensysteme zu finden
Insert units can be found in façade systems

Technische Informationen

Technical information

Prüfungen und Normen

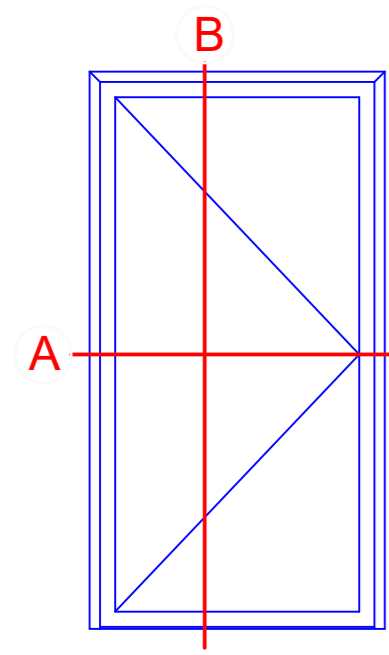
Tests and standards

Wärmedämmung nach DIN EN ISO 1077-2 Thermal insulation in accordance with DIN EN ISO 1077-2	$U_f = 2,21 \text{ W/(m}^2\text{K)}$
Schalldämmung nach DIN EN ISO 140-3 Sound reduction in accordance with DIN EN ISO 140-3	bis R_w 43 dB Up to R_w 43 dB
Einbruchhemmung nach DIN V ENV 1627 (DIN EN 1627) Burglar resistance in accordance with DIN V ENV 1627 (DIN EN 1627)	Klasse WK3 (RC 3) Class WK3 (RC 3)
Luftdurchlässigkeit nach DIN EN 12207 Air permeability in accordance with DIN EN 12207	Klasse 2 Class 2
Schlagregendichtheit nach DIN EN 12208 Watertightness in accordance with DIN EN 12208	Klasse 5A Class 5A
Windlastwiderstand nach DIN EN 12210 * Wind load resistance in accordance with DIN EN 12210	Klasse 2 Class 2
Mechanische Beanspruchung nach DIN EN 13115 Mechanical loading in accordance with DIN EN 13115	Klasse 2 Class 2
Dauerfunktion nach DIN EN 12400 Durability in accordance with DIN EN 12400	Klasse 6 Class 6

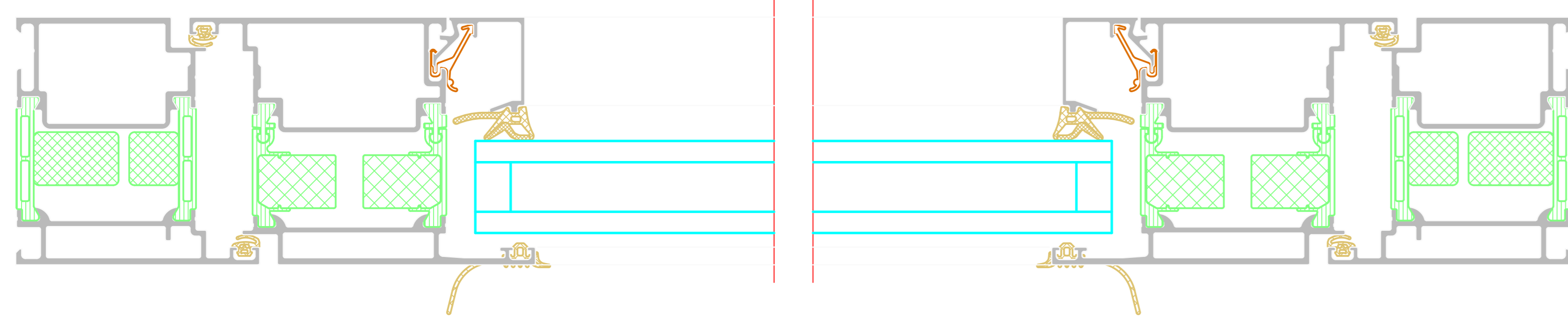
* Durchbiegungsverhalten profilabhängig
The amount of deflection will depend on the profile

** Die Angaben beschreiben die Bestwerte des Gesamtsystems bei innen als auch außen öffnenden Ausführungen. Die Eigenschaften einer jeweils gewählten Ausführungsvariante oder Elementkombination sind im Einzelfall anhand der ausführlichen Prüfdokumentation zu bestimmen.
The information describes the optimum values of the entire system for both inward and outward-opening designs. The properties of a selected design option or unit combination have to be determined individually based on the comprehensive test documentation.

Einflügelige Tür
Single-leaf door

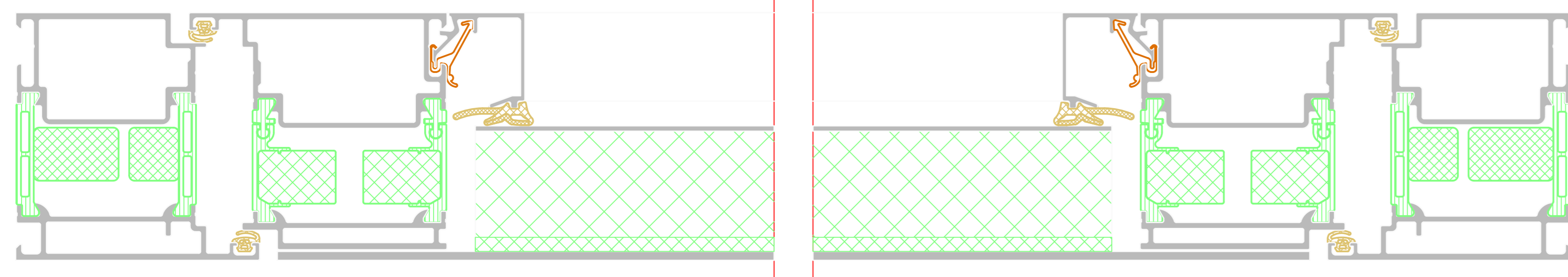


A

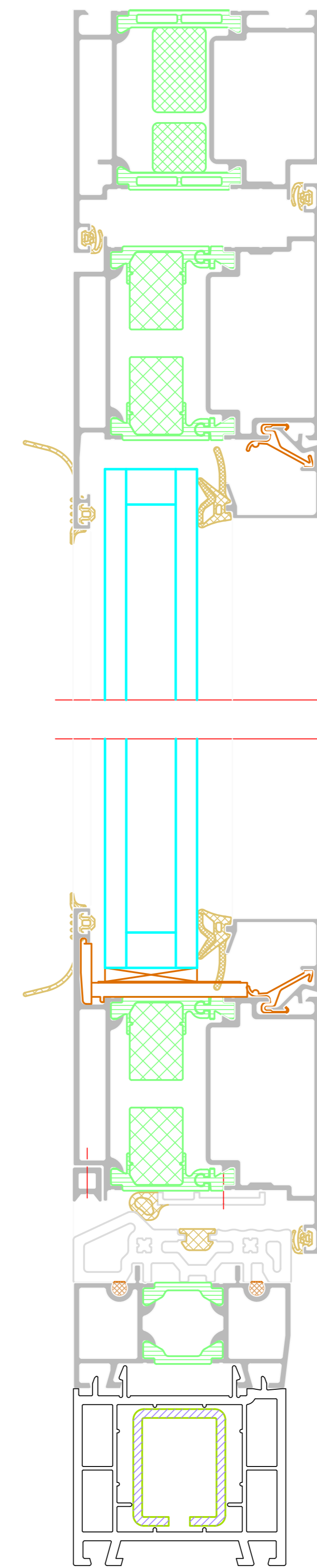


A

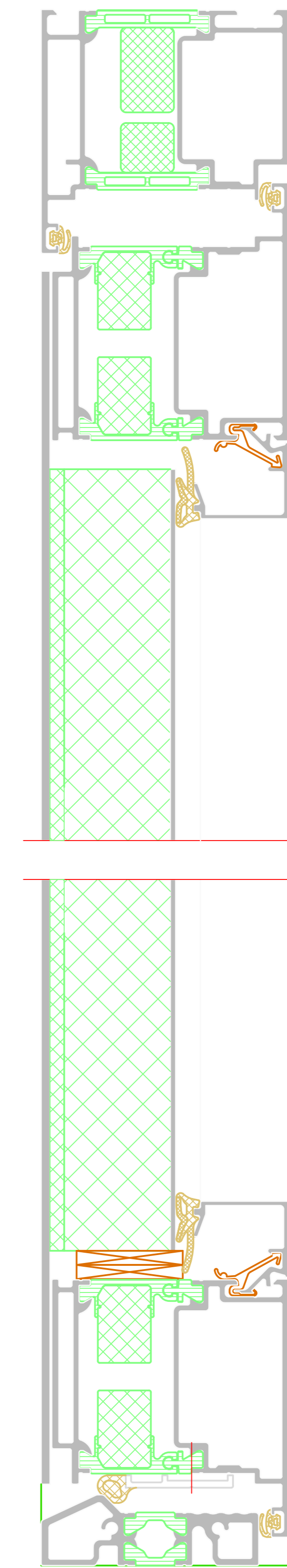
Flügelüberdeckend einseitig
Leaf-enclosing on one side



B



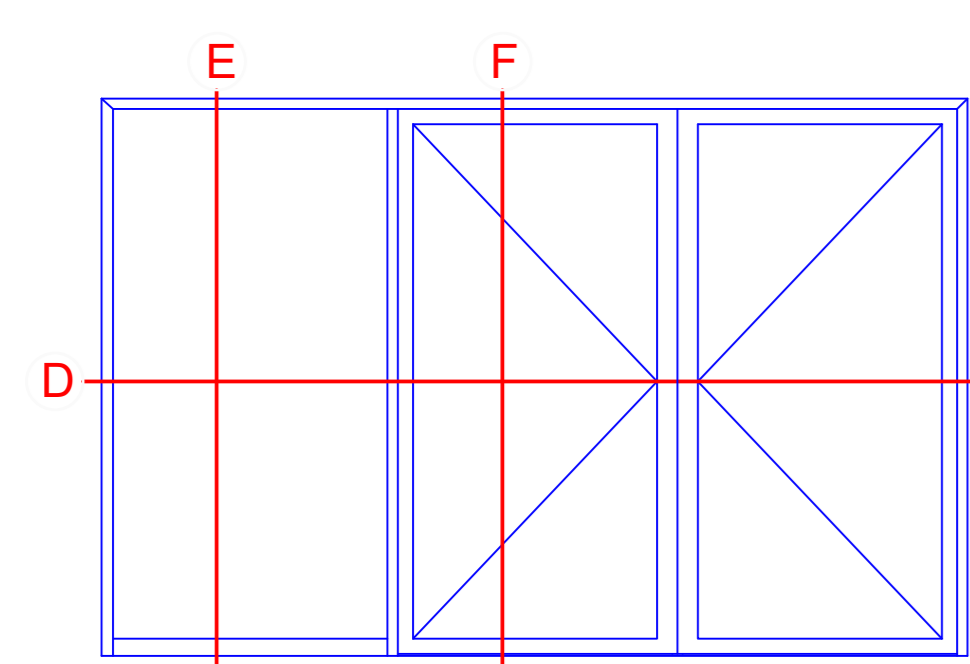
B



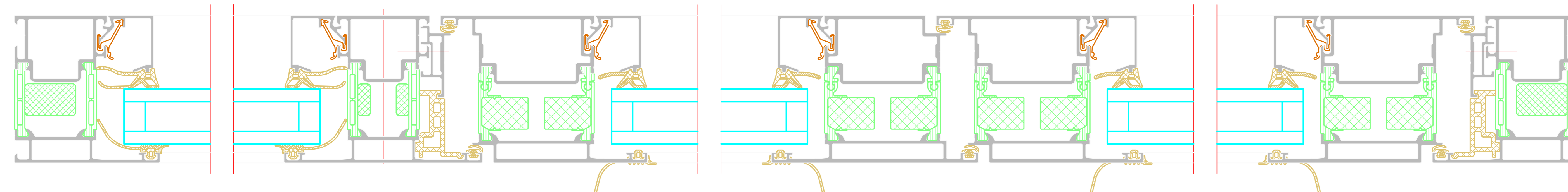
Flügelüberdeckend einseitig
Leaf-enclosing on one side

NO	DATE	DESCRIPTION	BY	CHECKED BY
001	2018	01	01	01
Riva Elementschelle				
Riva LHM section details				
Tür RIVA ADS 70 H Innen Öffend. Richebündig				
Door RIVA ADS 70 H Inward opening, flush-fitted				
BENEDICT + RIVA				
BENEDICT + RIVA GmbH				
Helmholtzstr. 19				
42699 Solingen, Germany				

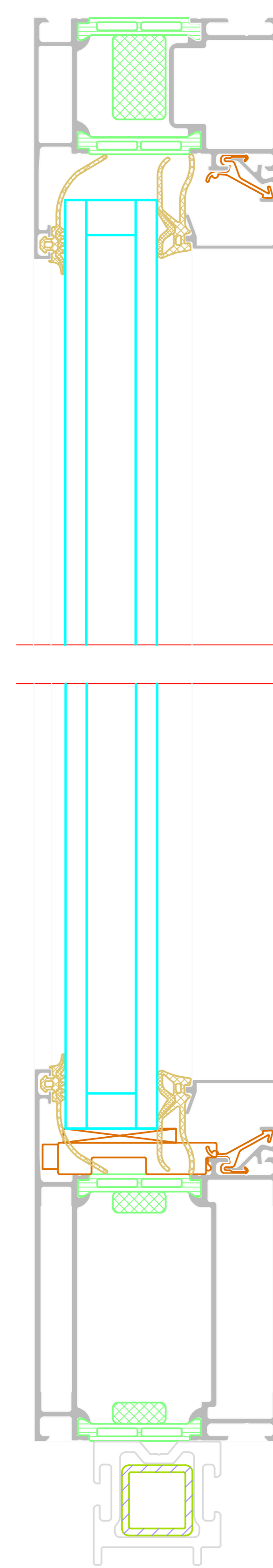
Zweiflügelige Tür mit Festfeld
 Double-leaf door with fixed light



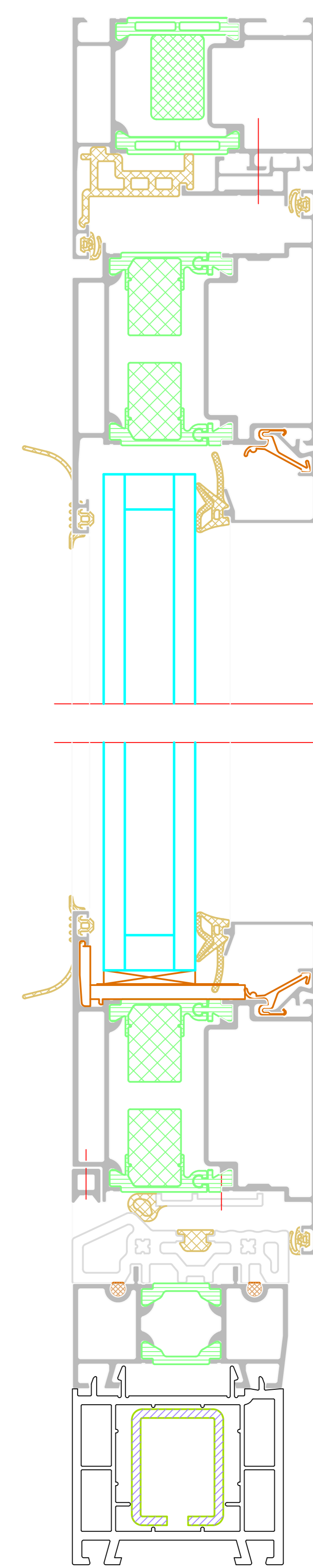
D



E

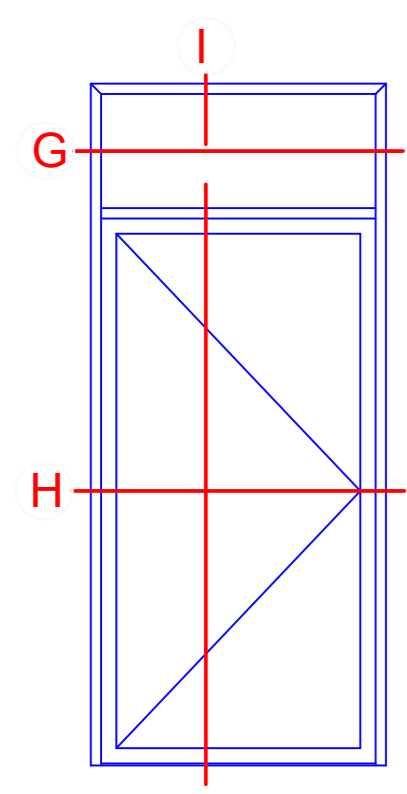


F

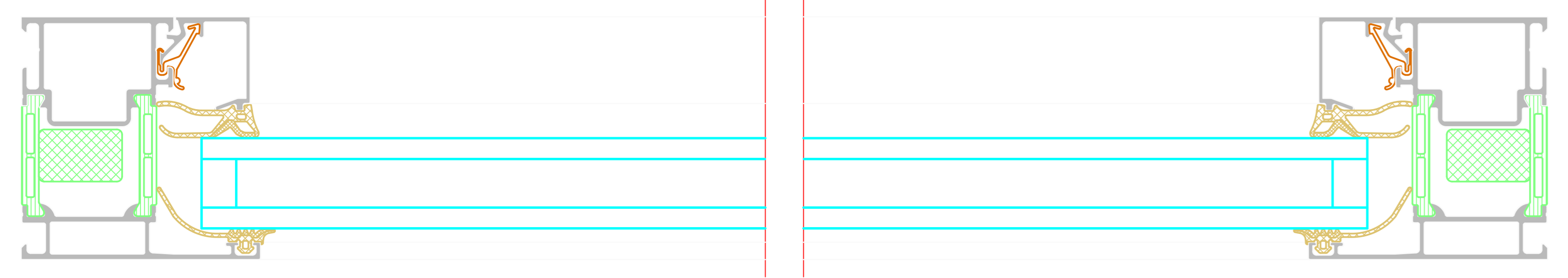


NO.	DATE	REVISION	BY	CHECKED BY
1	2024	01
Riva Elementschelle Riva Unit section details				
Tür RIVA ADS F0 H1 Innen Öffend. Sicher-Bündig Door RIVA ADS F0 H1 inward opening, flush-fixed				
BENEDICT + RIVA				

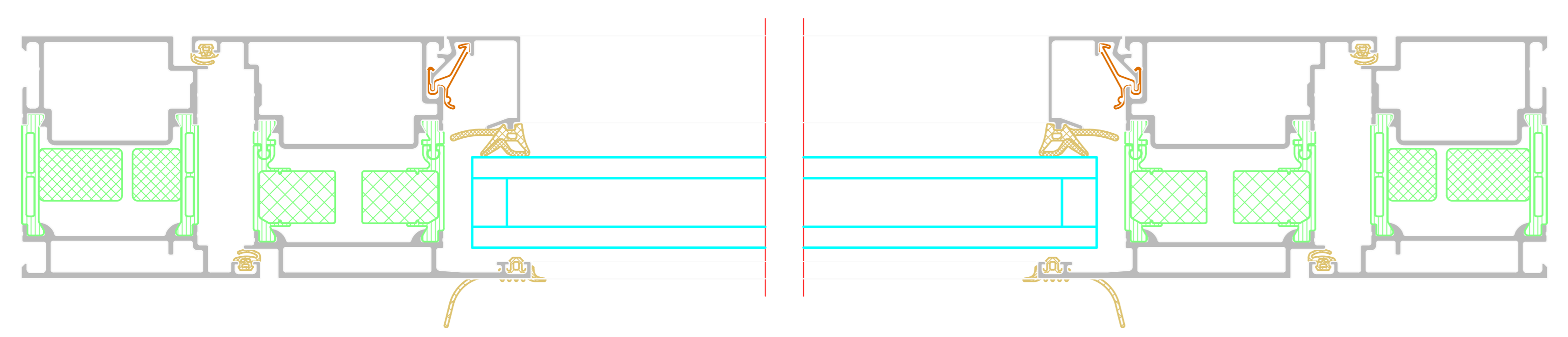
Einflügelige Tür mit Oberlicht
Single-leaf door with toplight



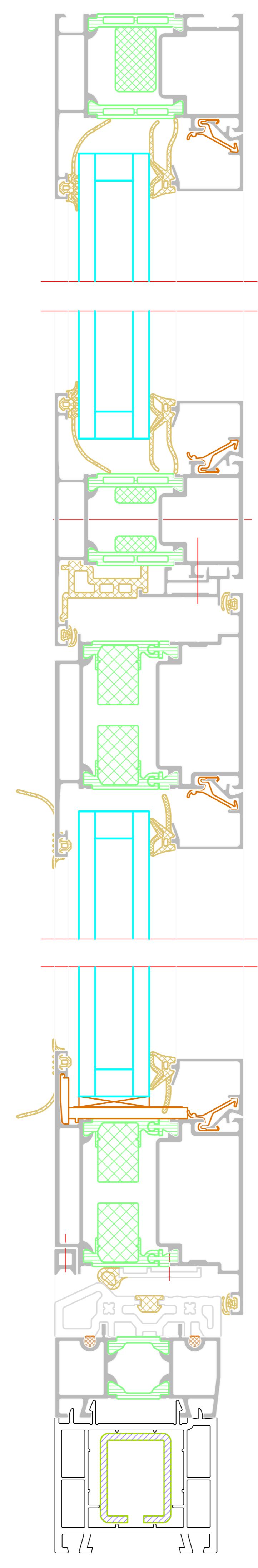
G



H

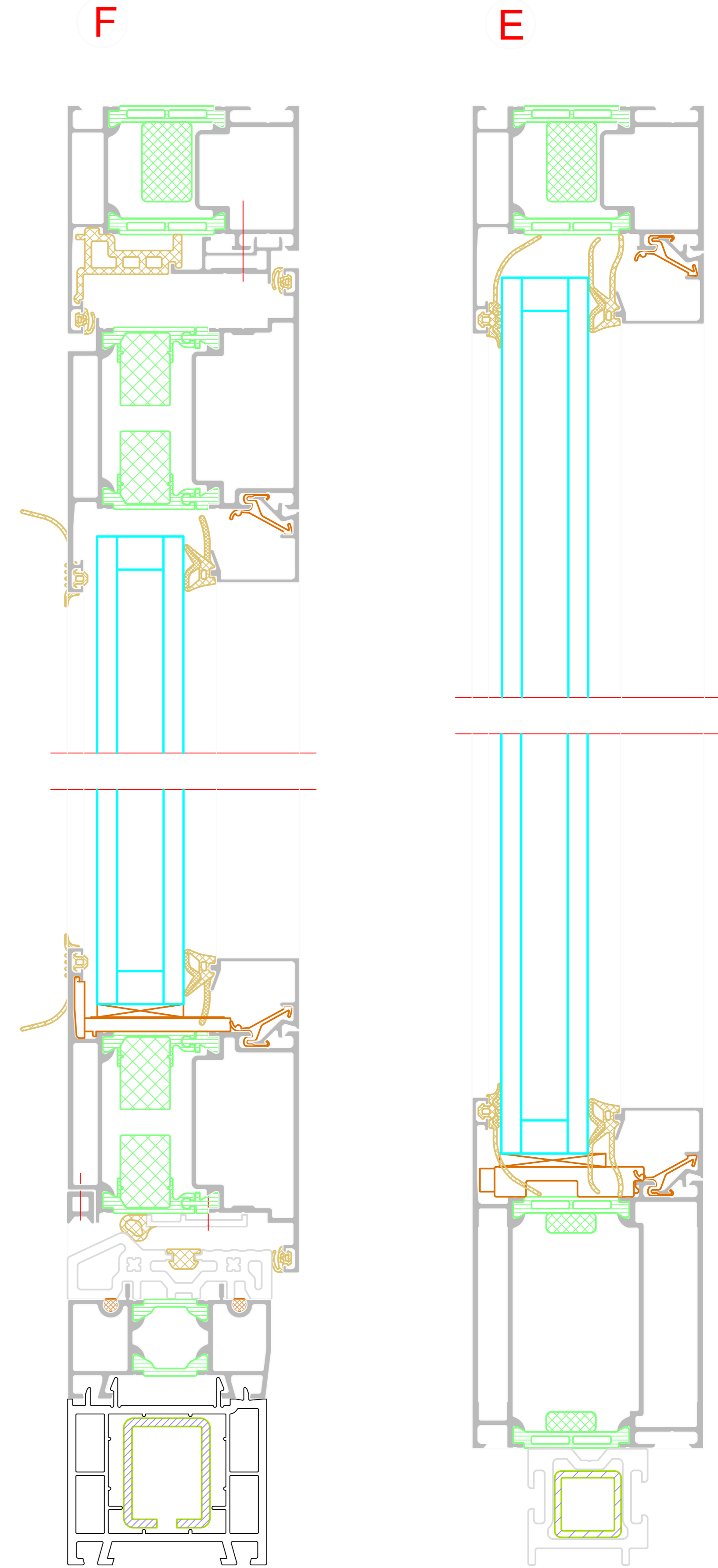
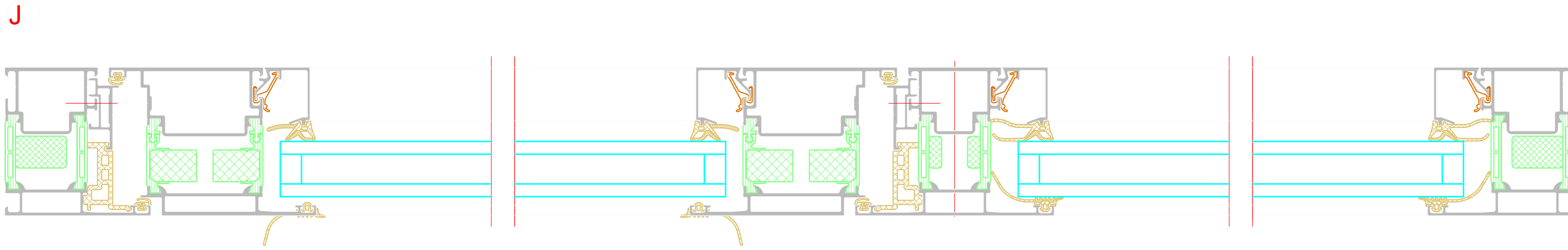
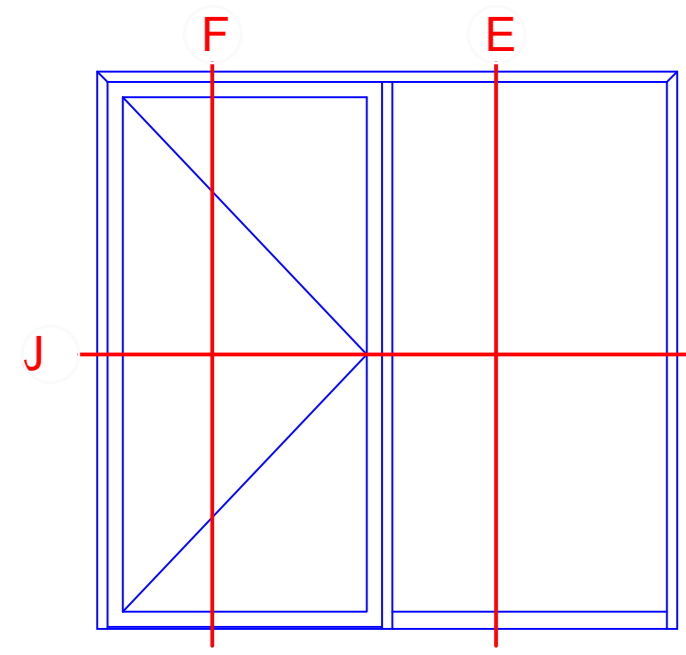


I



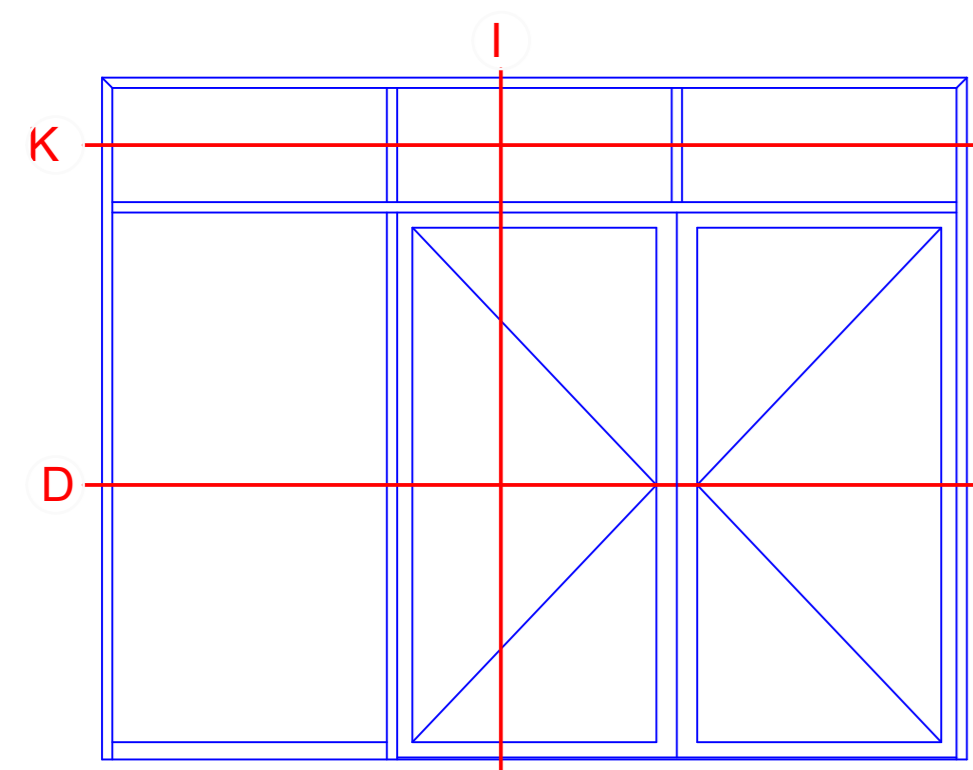
NO.	DATE	REVISION	BY	CHECKED	DATE
001	01.10.2018	01
<p>Project: Riva Elementschelle Riva Unit section details</p> <p>Client: ... Door RIVA ADS T0 H1 inward opening, flush-fixed</p>					
<p>BENEDICT + RIVA BENEDICT + RIVA GmbH Helmholtzstr. 19 42699 Solingen, Germany</p>					

Einfügelige Tür mit Festfeld
Single-leaf door with fixed light

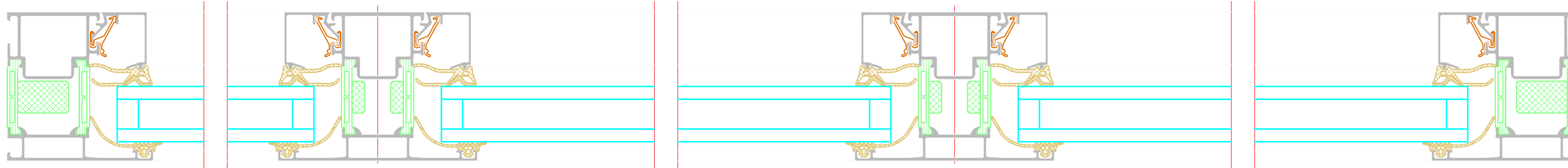


NO.	DATE	REVISION	BY	CHECKED BY
001	01.01.2023	01
<p>Riva Elementschelle Riva Unit section details</p> <p>Tür RIVA ADS F0 H1 Innen Öffnung, Sicherbindung Door RIVA ADS F0 H1 inward opening, Ruck-feld</p>				
<p>BENEDICT + RIVA <small>BENEDICT - RIVA GmbH Helmholtzstrasse 19 42699 Solingen, Germany</small></p>				

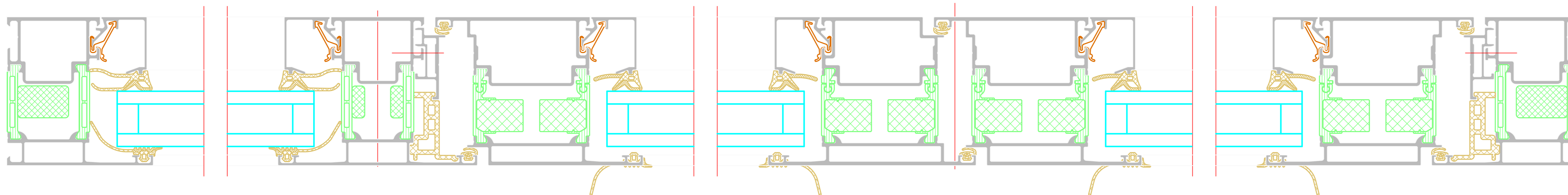
Zweiflügelige Tür mit Festfeld und Oberlicht
 Double-leaf door with fixed light and toplight



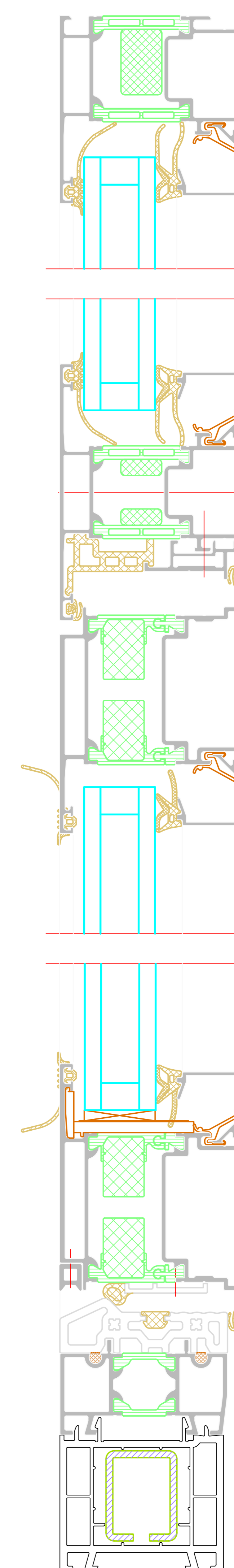
K



D



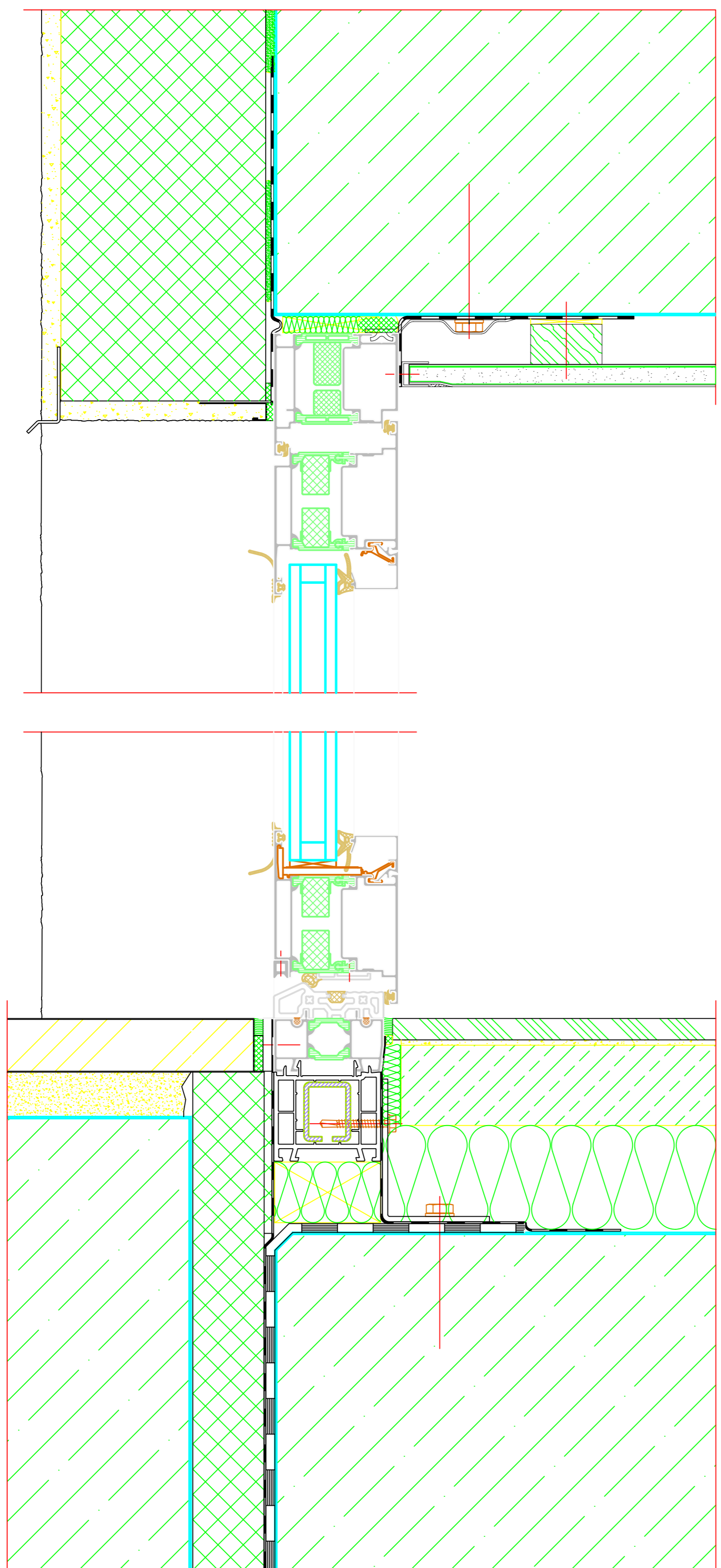
I



NO	DATE	REVISION	BY	CHECKED	DATE
01	01.10.2018				
Riva Elementschelle Riva Unit section details					
Tür RIVA ADS F10 H1 Innen Öffnung, Ränderbündig Door RIVA ADS F10 H1 inward opening, flush-faced					
BENEDICT + RIVA RIVA - RIVA GmbH RIVA - RIVA GmbH RIVA - RIVA GmbH RIVA - RIVA GmbH					

Wand mit WDVS
Wall with composite thermal insulation system

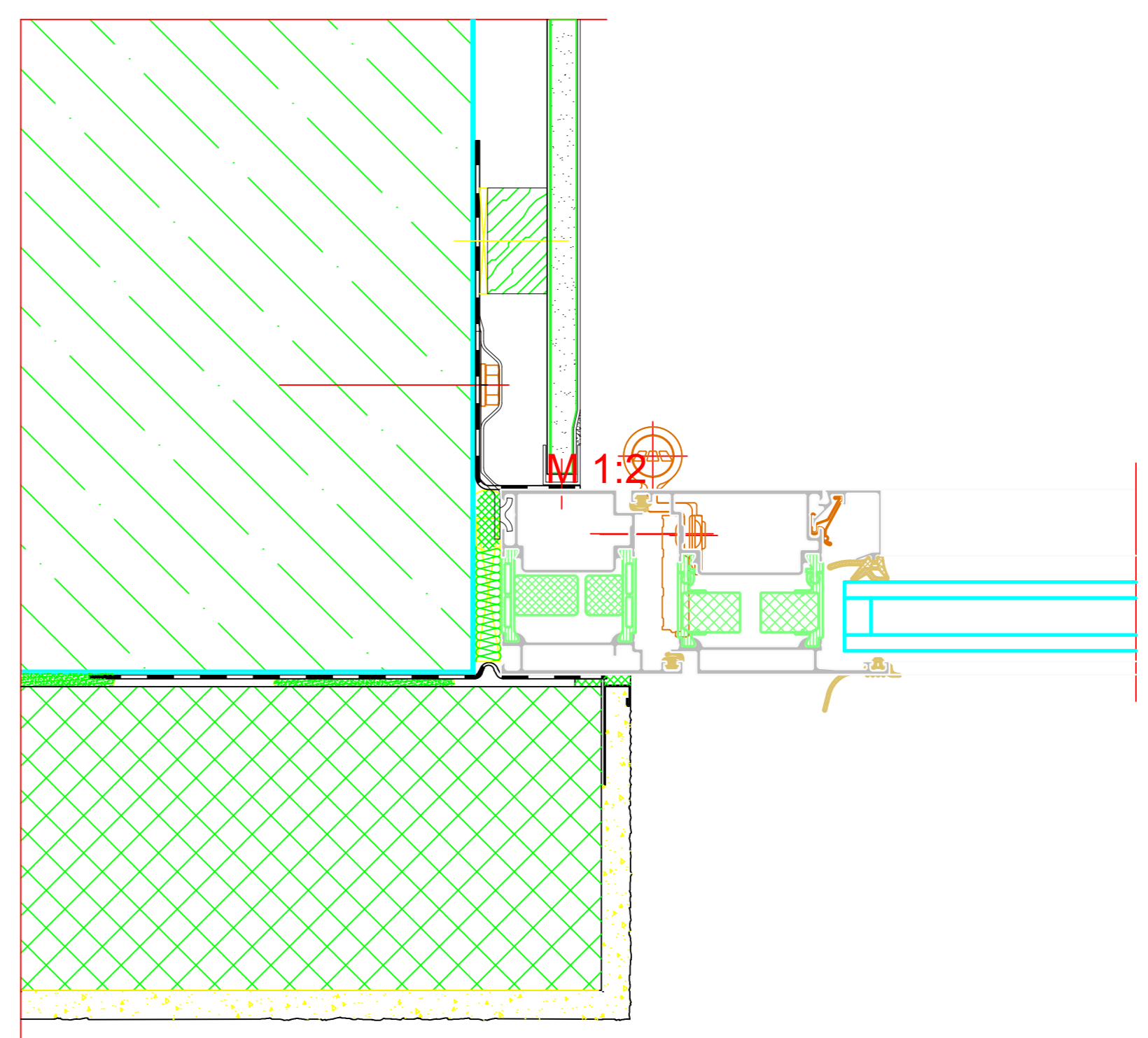
Oberer Anschluss
Top attachment



M 1:2

Unterer Anschluss
Bottom attachment

Seitlicher Anschluss
Side attachment



M 1:2

INDEX	DATE	ÄNDERUNG	GEZEICHNET	GEPRÜFT
NEIG.	DATE	CHANGE	DRAWN BY	CHECKED BY
PLANWALD				
PLAN CORRECT				
PROJECT				PROJECT NO.
Riva Baukörperanschlüsse				
Riva Attachments to building structure				
Tür RIVA ADS 70.HI Innen öffnend, flächenbündig				
Door RIVA ADS 70.HI inward opening, flush-fitted				
SCHAFFNER				
CLIENT				
PLANKONSTRUKTION				
PLANNER				
BENEDICT + RIVA				
BENEDICT + RIVA GmbH				
Röselstrasse 13				
04229 Leipzig, Germany				
ANSCHLUSSPARTNER	STATUS	MASSSTAB	GEZEICHNET	GEPRÜFT
CONTACT PERSON	STATUS	SCALE	DRAWN BY	CHECKED BY
PLANNUMMER	STATUS	MASSSTAB	GEZEICHNET	GEPRÜFT
DOCUMENT NUMBER				