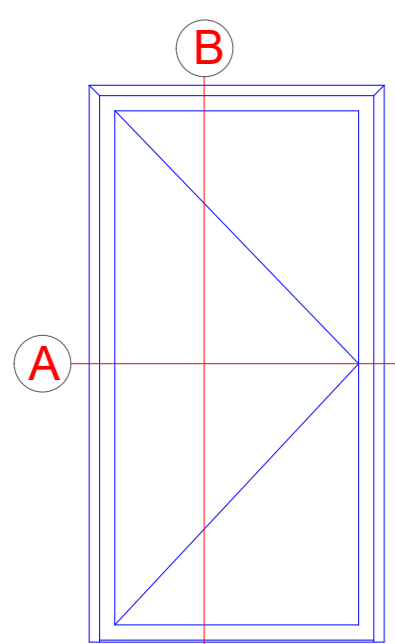
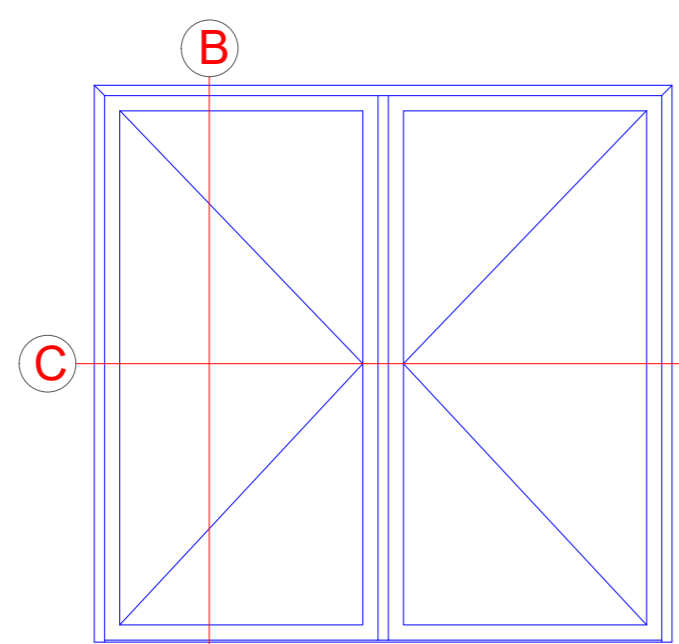


Einflügelige Tür  
Single-leaf door



Zweiflügelige Tür  
Double-leaf door



## Technische Informationen

### Technical information

#### Prüfungen und Normen \*

#### Tests and standards

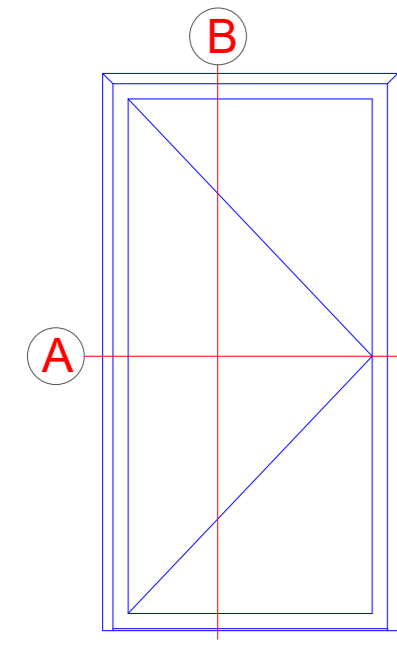
|   |  |
|---|--|
| Wärmedämmung nach DIN EN ISO 1077-2<br>Thermal insulation in accordance with DIN EN ISO 1077-2                          | $U_f = 1 \text{ W}/(\text{m}^2\text{K})$ |
| Einbruchhemmung nach DIN V ENV 1627 (DIN EN 1627)<br>Burglar resistance in accordance with DIN V ENV 1627 (DIN EN 1627) | keine Angaben<br>No details              |
| Luftdurchlässigkeit nach DIN EN 12207<br>Air permeability in accordance with DIN EN 12207                               | Klasse 4<br>Class 4                      |
| Schlagregendichtheit nach DIN EN 12208<br>Watertightness in accordance with DIN EN 12208                                | Klasse 5A<br>Class 5A                    |
| Windlastwiderstand nach DIN EN 12210<br>Wind load resistance in accordance with DIN EN 12210                            | Klasse C2 / B2<br>Class C2 / B2          |

\* Die Angaben beschreiben die Bestwerte des Gesamtsystems bei innen als auch außen öffnenden Ausführungen. Die Eigenschaften einer jeweils gewählten Ausführungsvariante oder Elementkombination sind im Einzelfall anhand der ausführlichen Prüfdokumentation zu bestimmen.

The information describes the optimum values of the entire system for both inward and outward-opening designs.

The properties of a selected design option or unit combination have to be determined individually based on the comprehensive test documentation.

Einflügelige Tür  
Single-leaf door

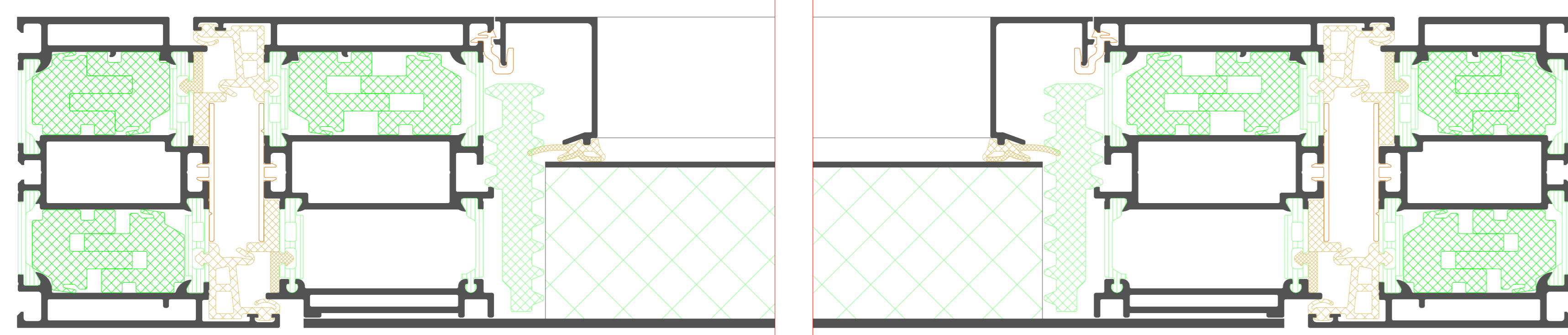


A



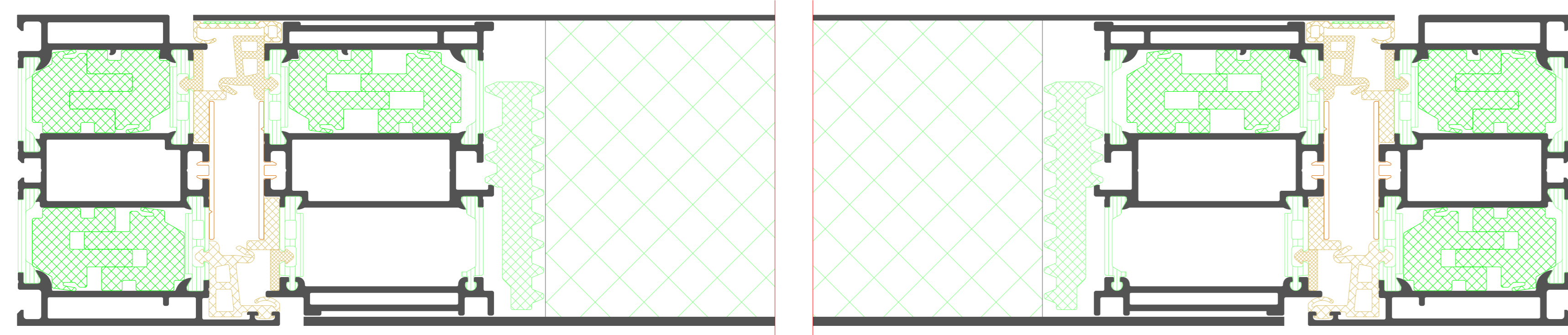
A

Flügelüberdeckend einseitig  
Leaf-enclosing on one side

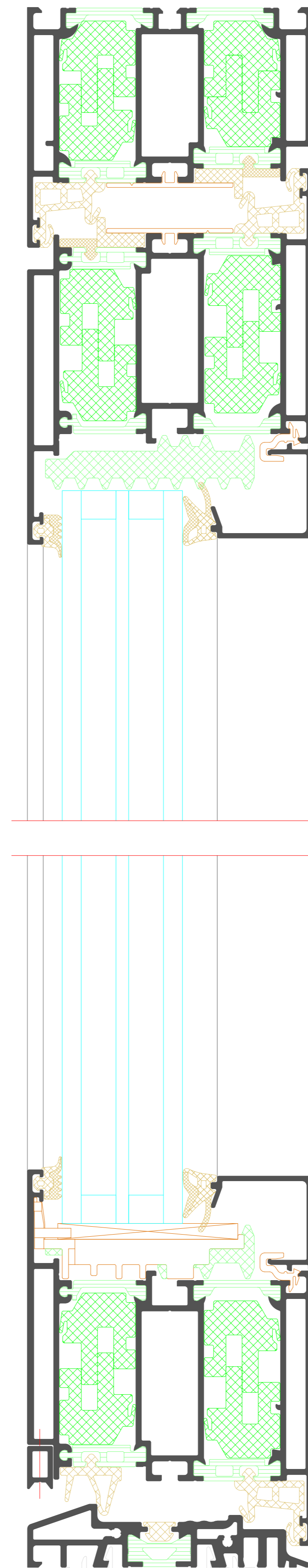


A

Flügelüberdeckend zweiseitig  
Leaf-enclosing on two sides

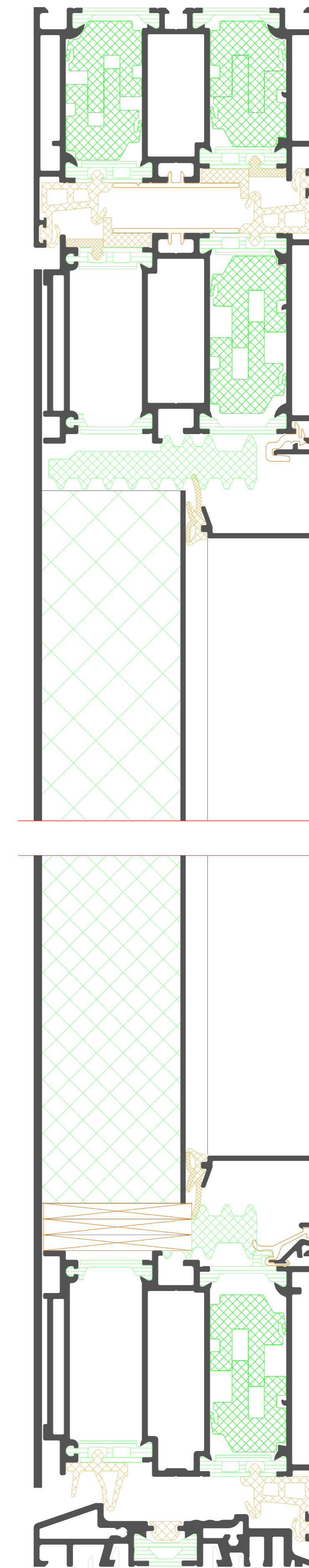


B



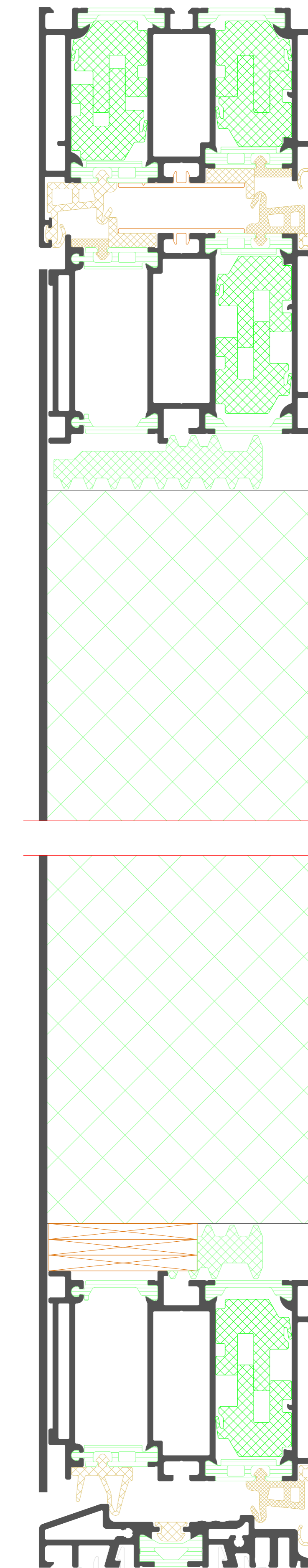
Flügelüberdeckend einseitig  
Leaf-enclosing on one side

B



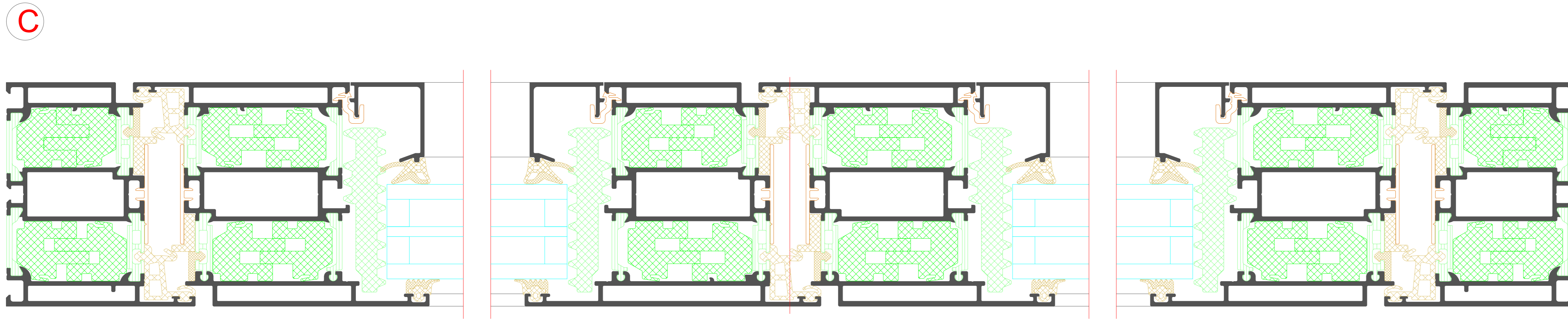
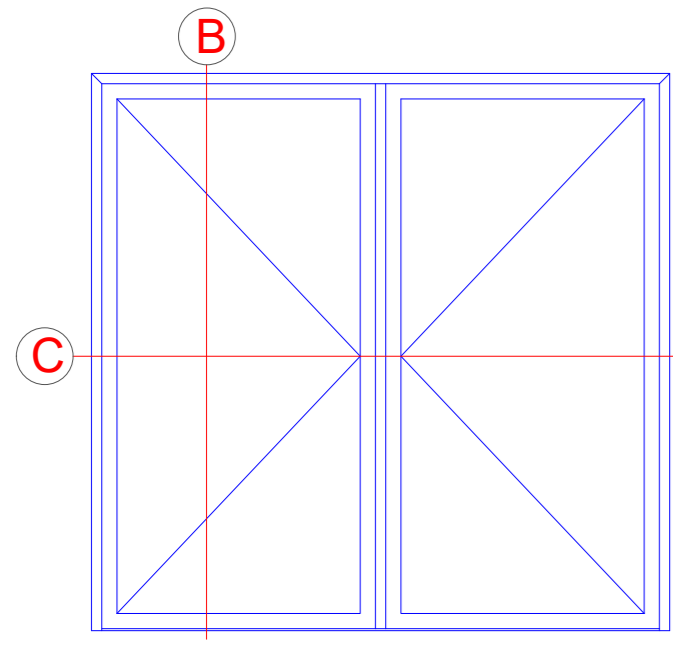
Flügelüberdeckend zweiseitig  
Leaf-enclosing on two sides

B

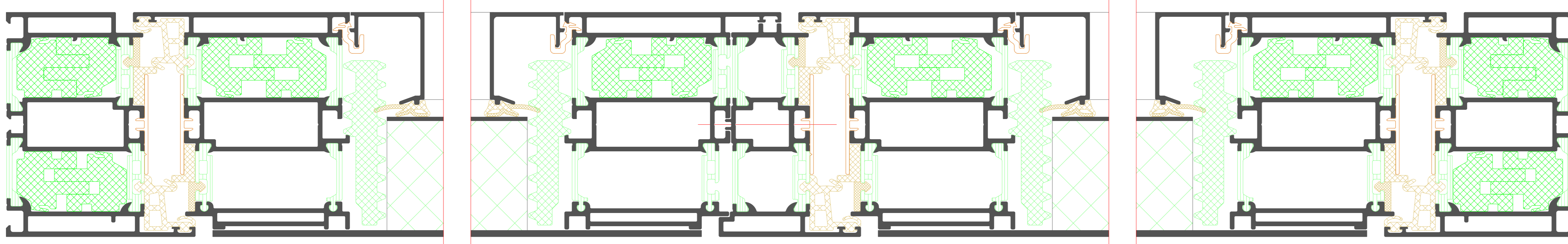


| NO.   | DATE | REVISION | BY  | CHECKED | GROUP |
|---|------|----------|-----|---------|-------|
| 001   | 2024 | 01       | ... | ...     | ...   |
| <p>Riva Elementschelle<br/>Riva Unit section details</p> <p>Tür RIVA AD UP 90 SI Innen offhend, flächenbündig<br/>Door RIVA AD UP 90 SI inward opening, flush-floor</p> |      |          |     |         |       |
| <p><b>BENEDICT + RIVA</b> <small>BENEDICT + RIVA GmbH<br/>Helmholtzstrasse 19<br/>42699 Solingen, Germany</small></p>   |      |          |     |         |       |

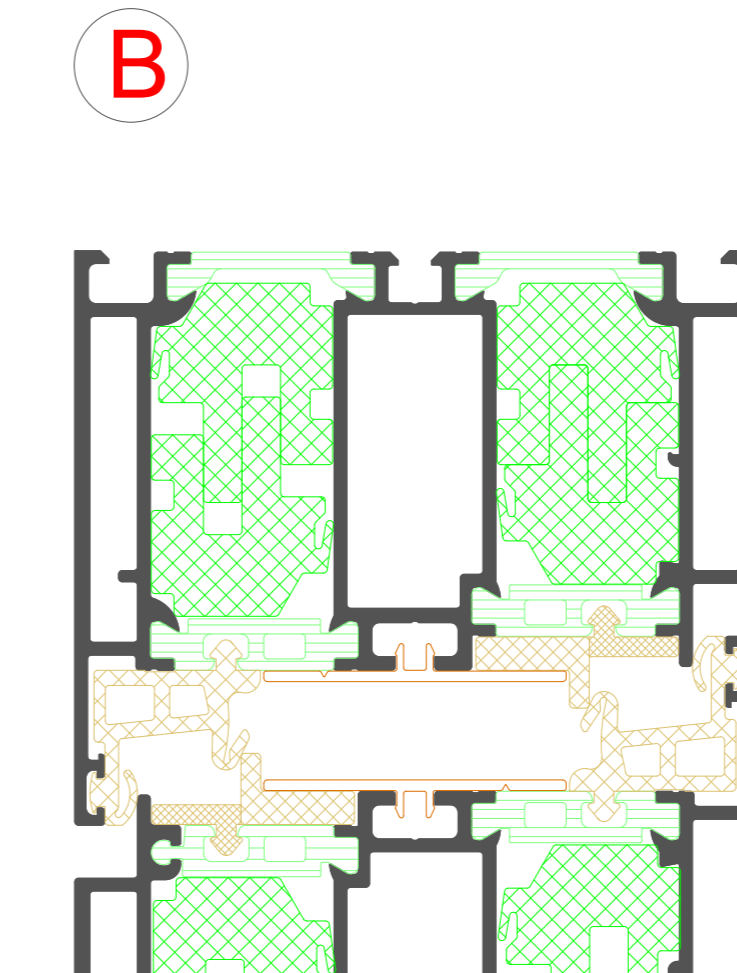
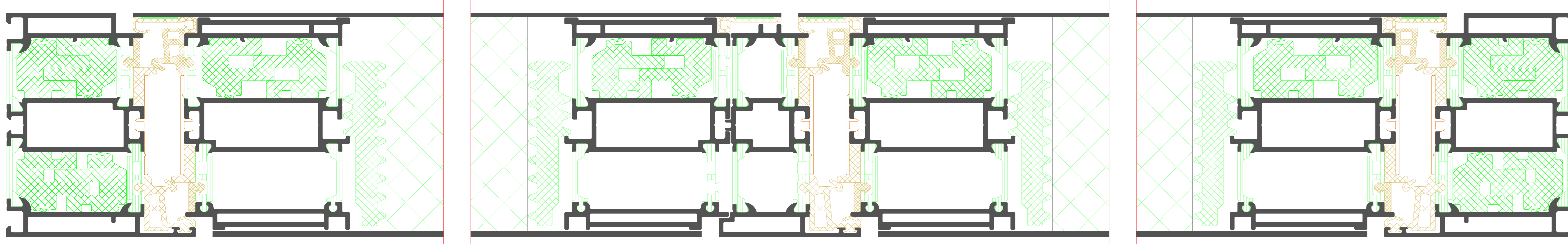
Zweiflügelige Tür  
Double-leaf door



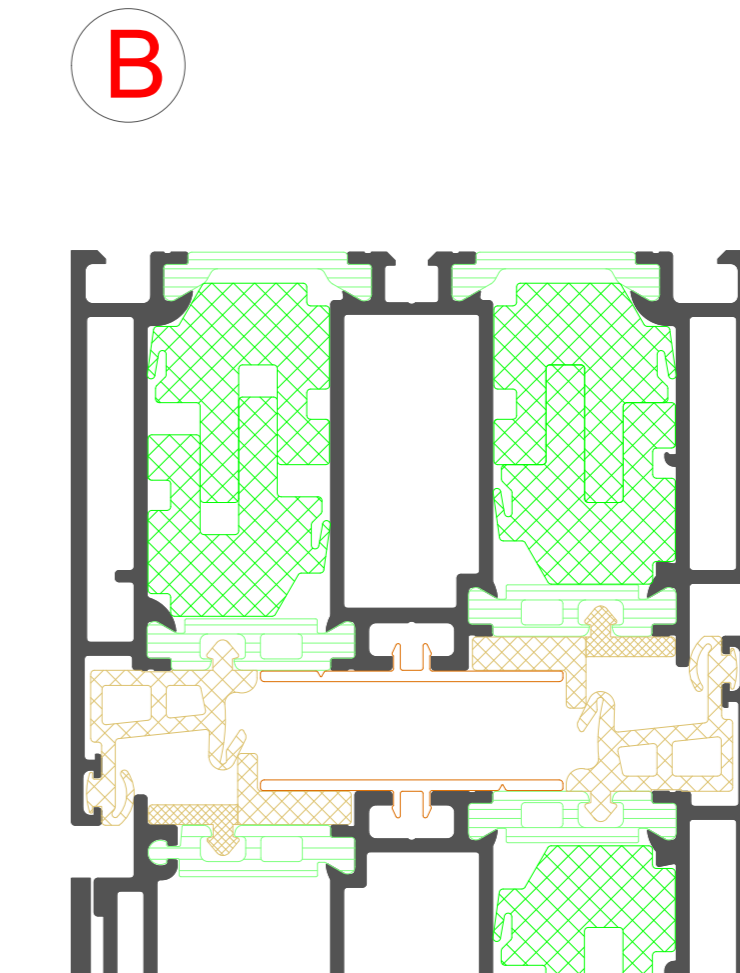
**C** Flügelüberdeckend einseitig  
Leaf-enclosing on one side



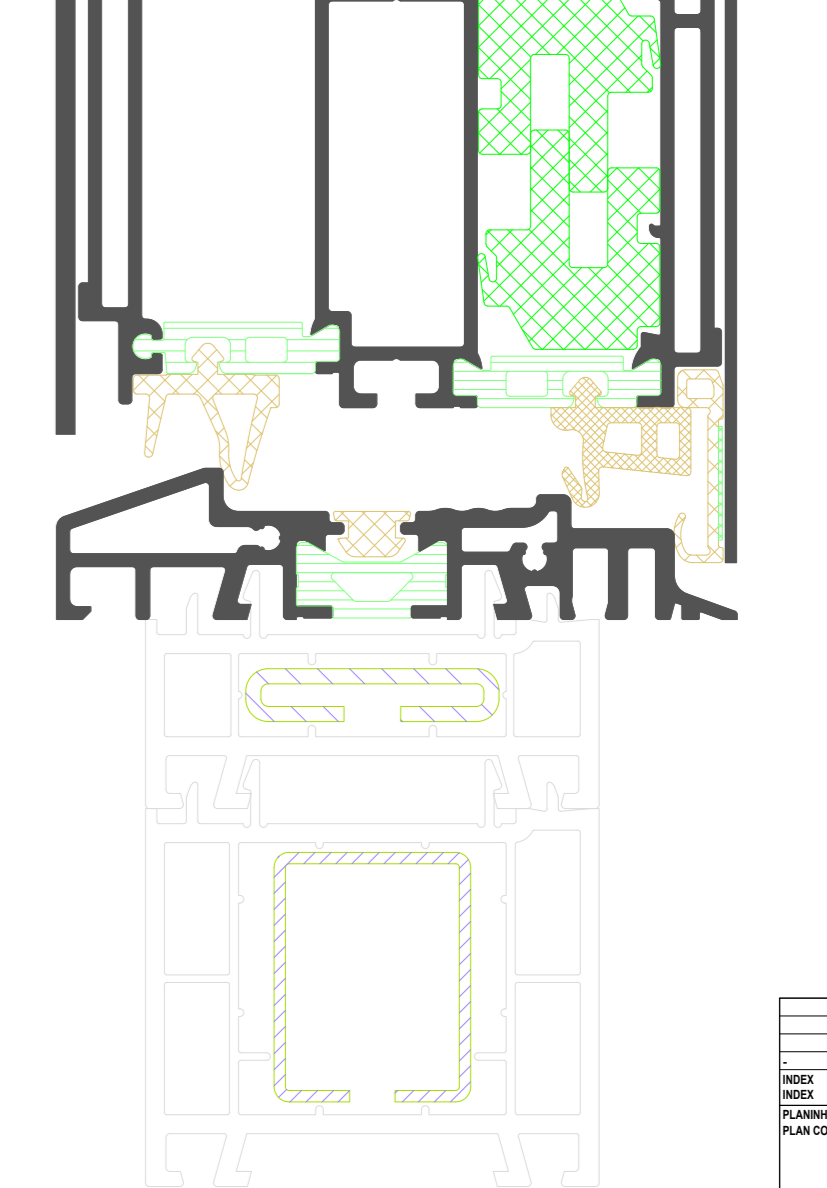
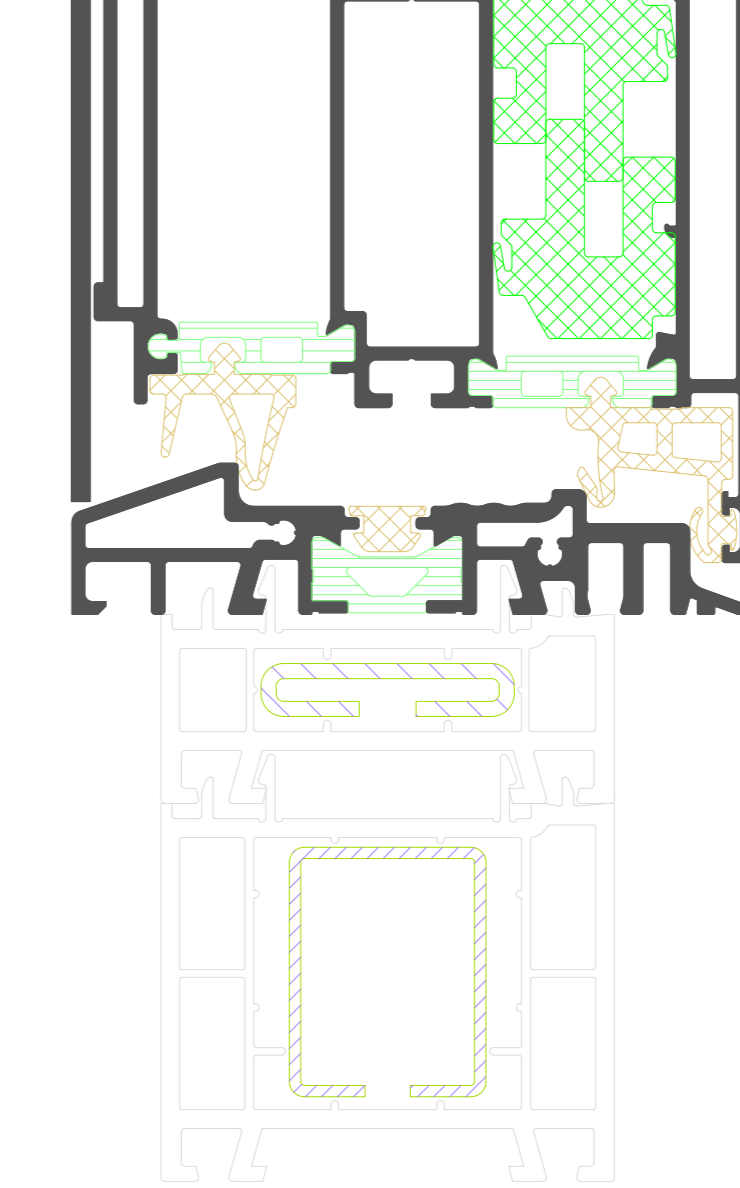
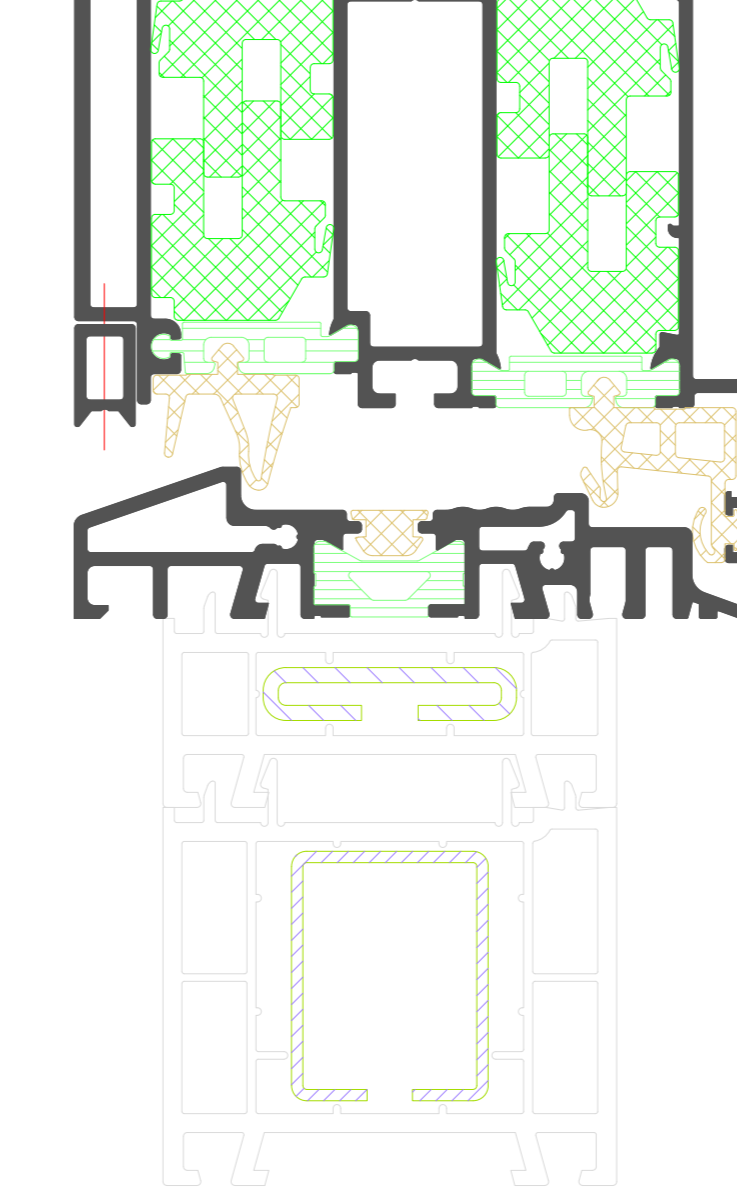
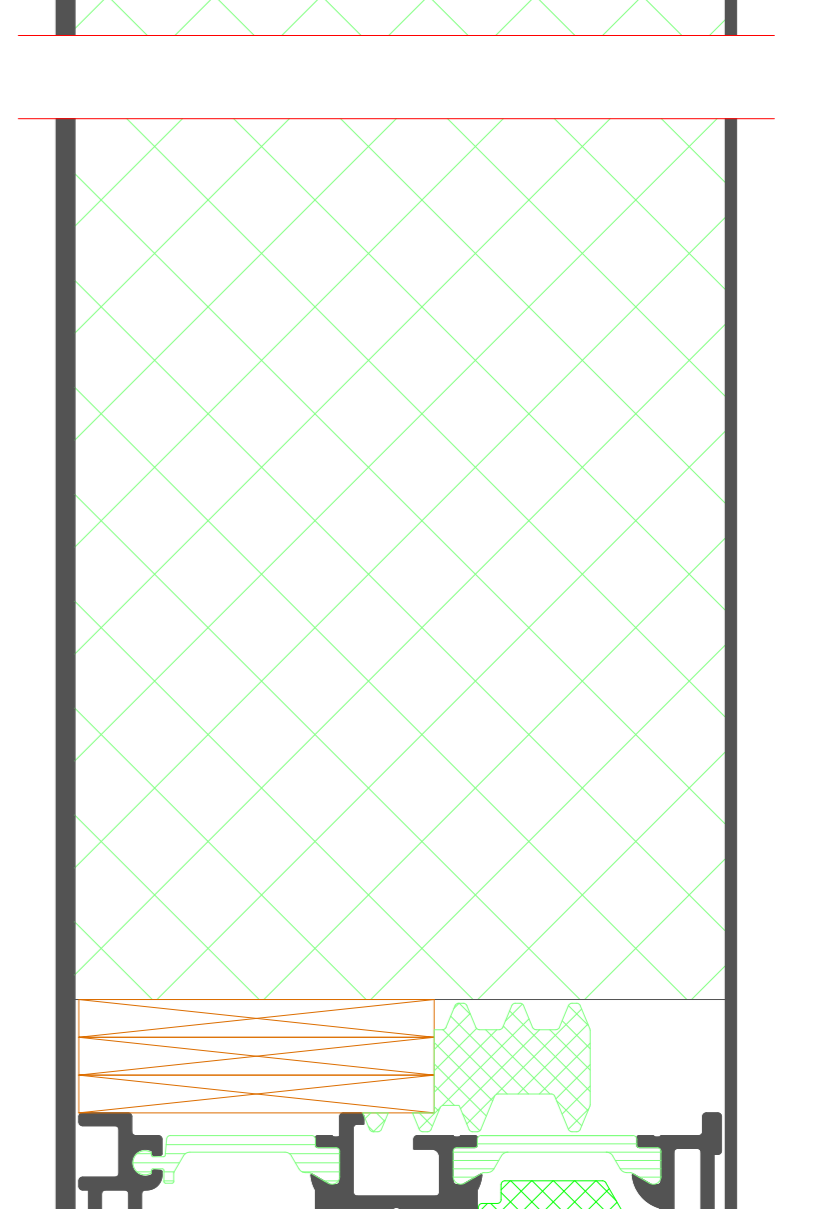
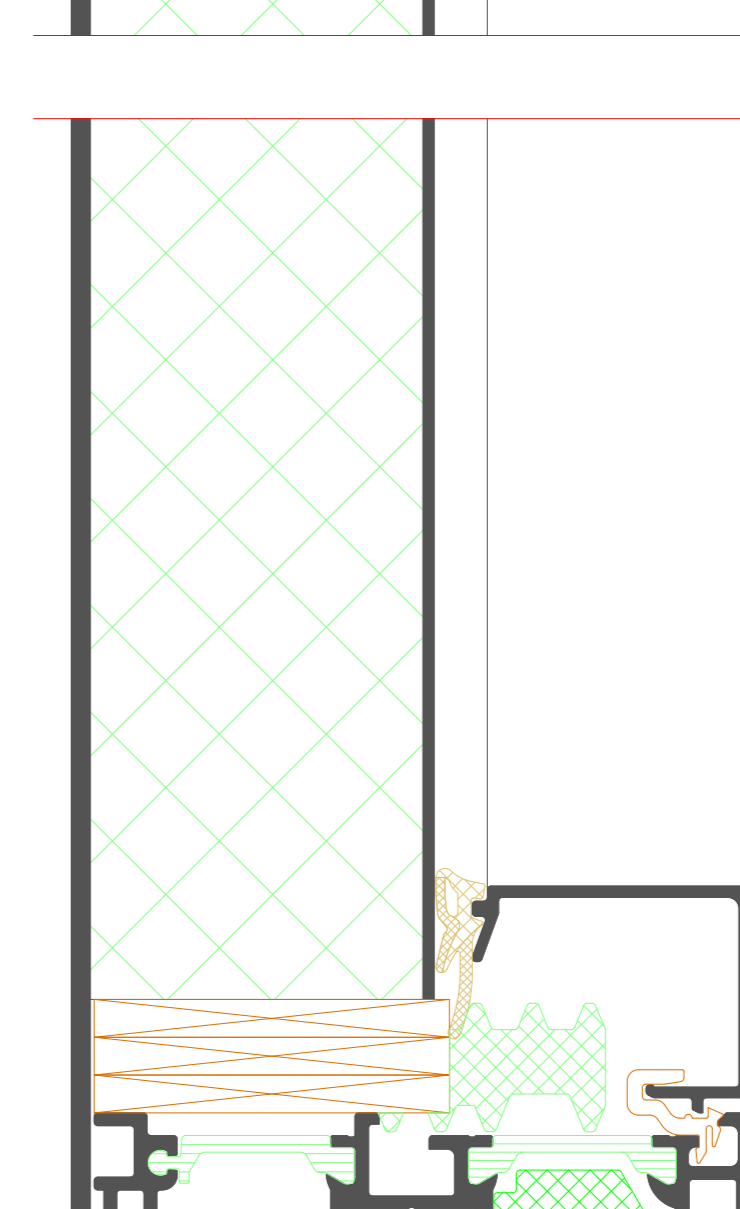
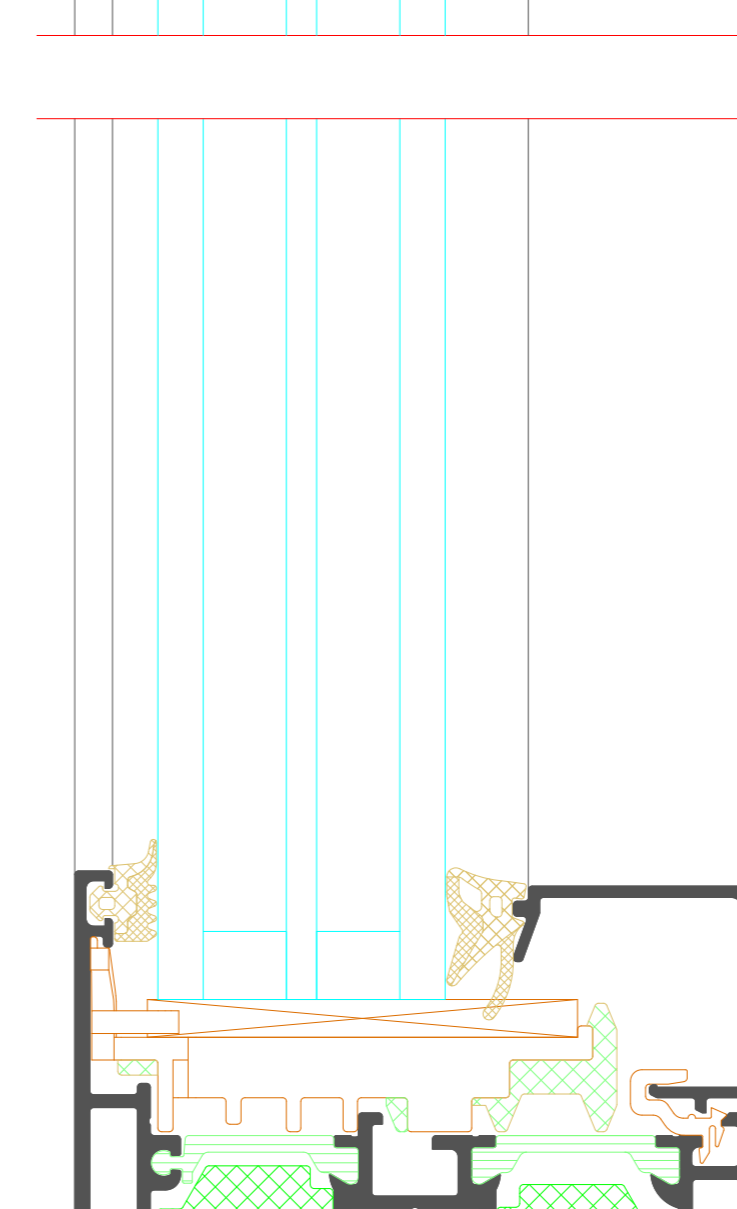
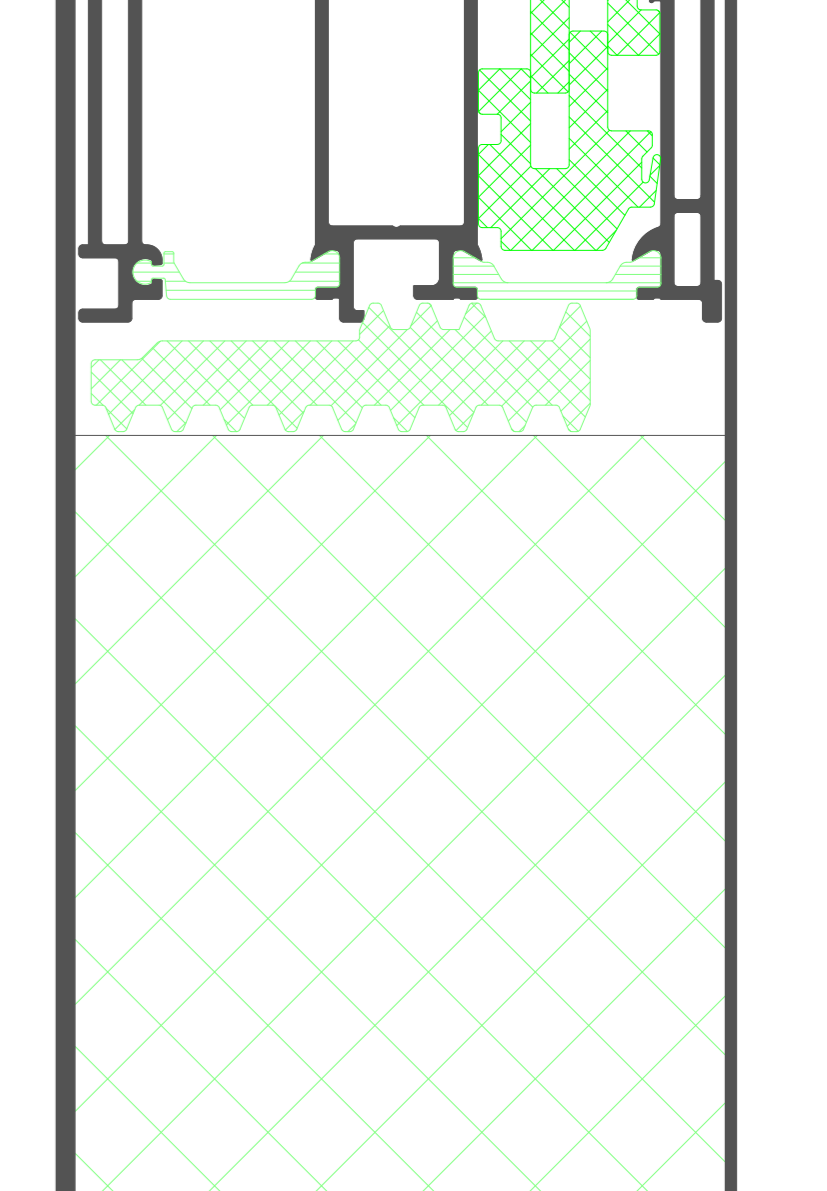
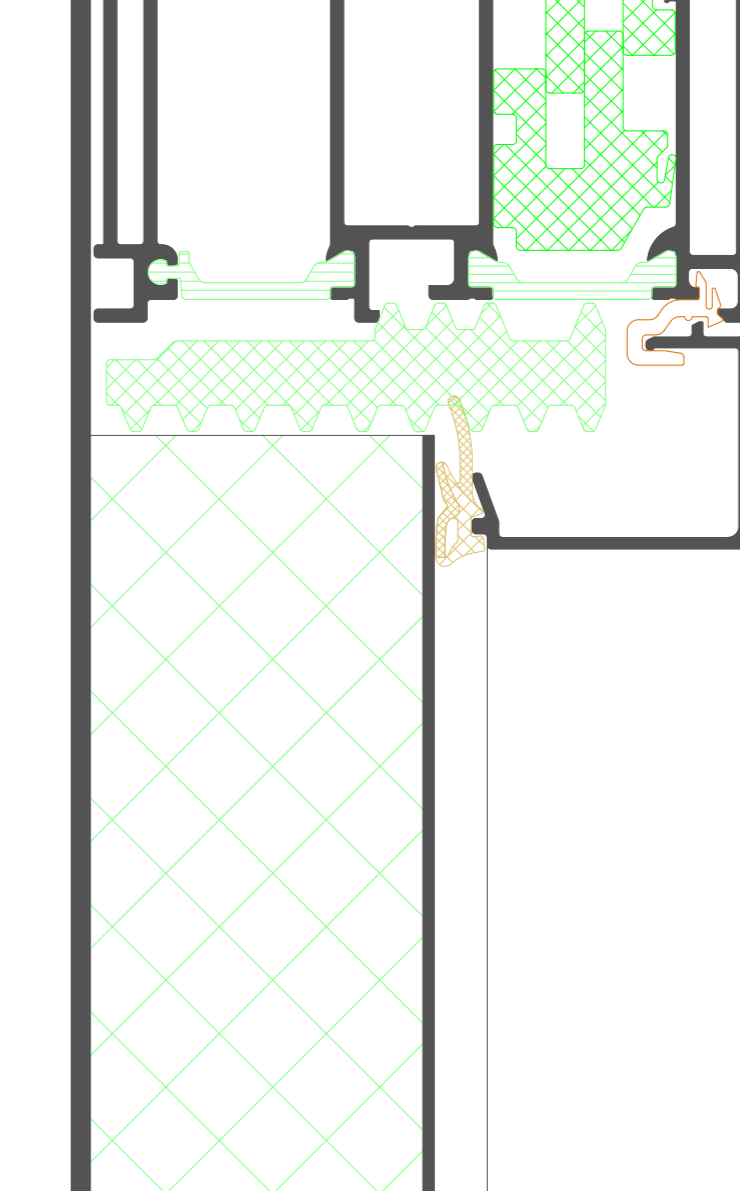
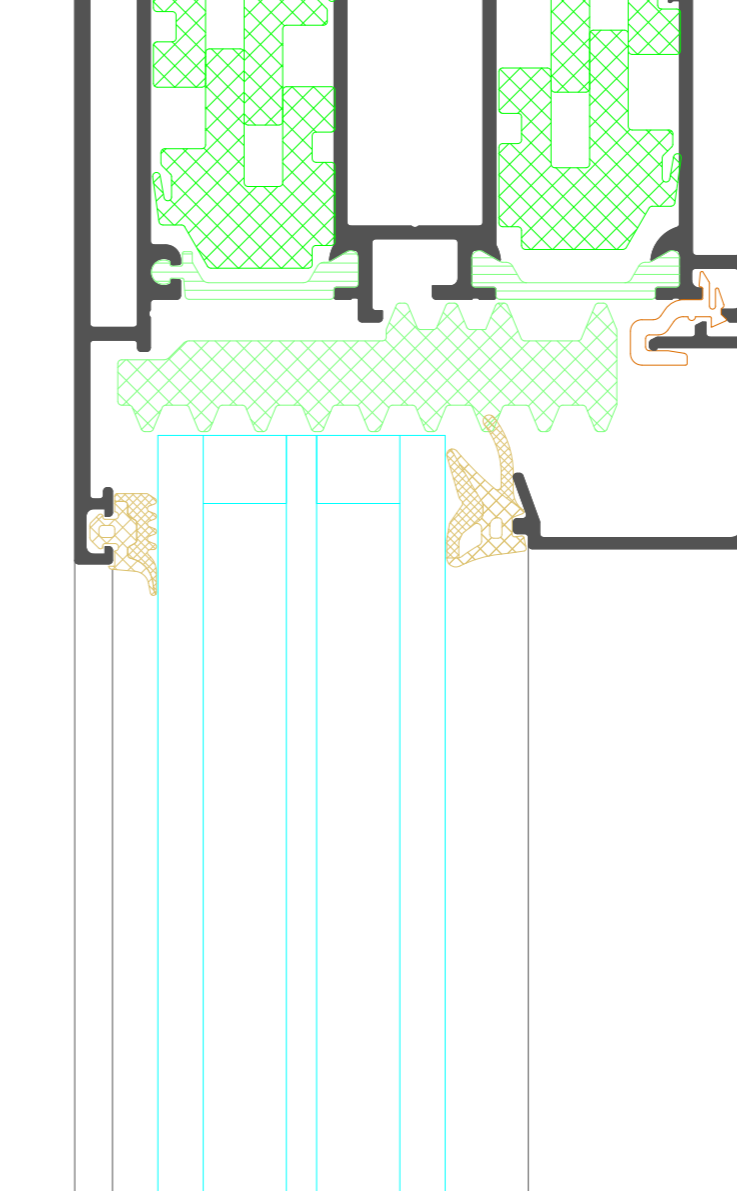
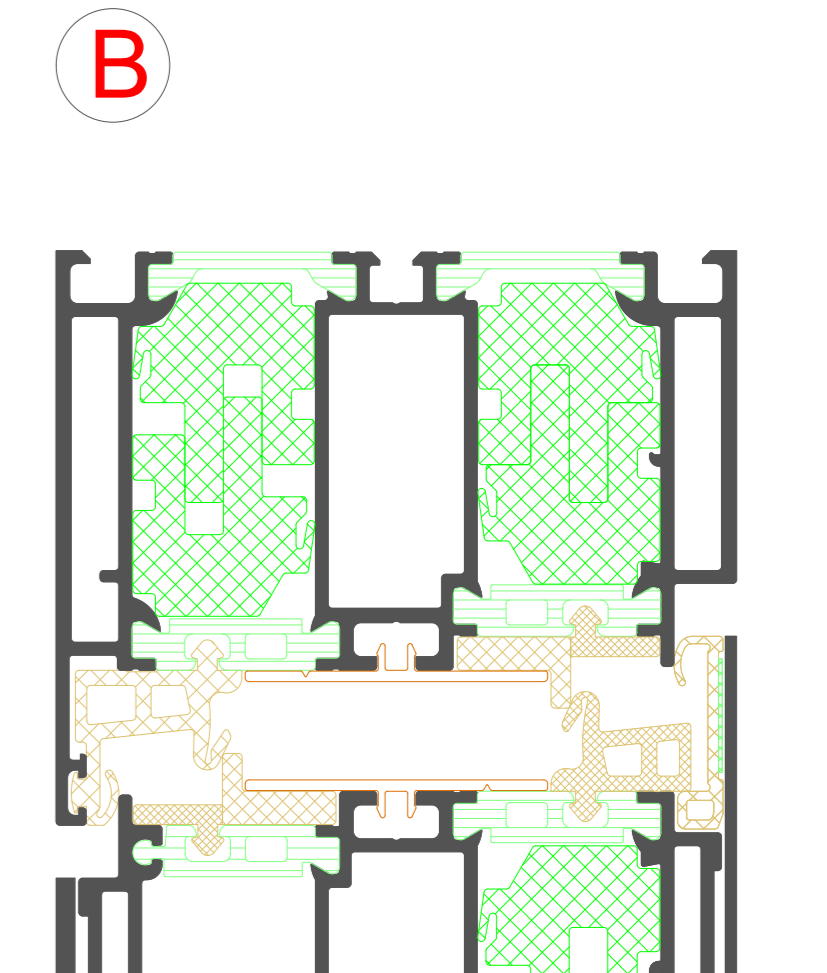
**C** Flügelüberdeckend zweiseitig  
Leaf-enclosing on two sides



Flügelüberdeckend einseitig  
Leaf-enclosing on one side



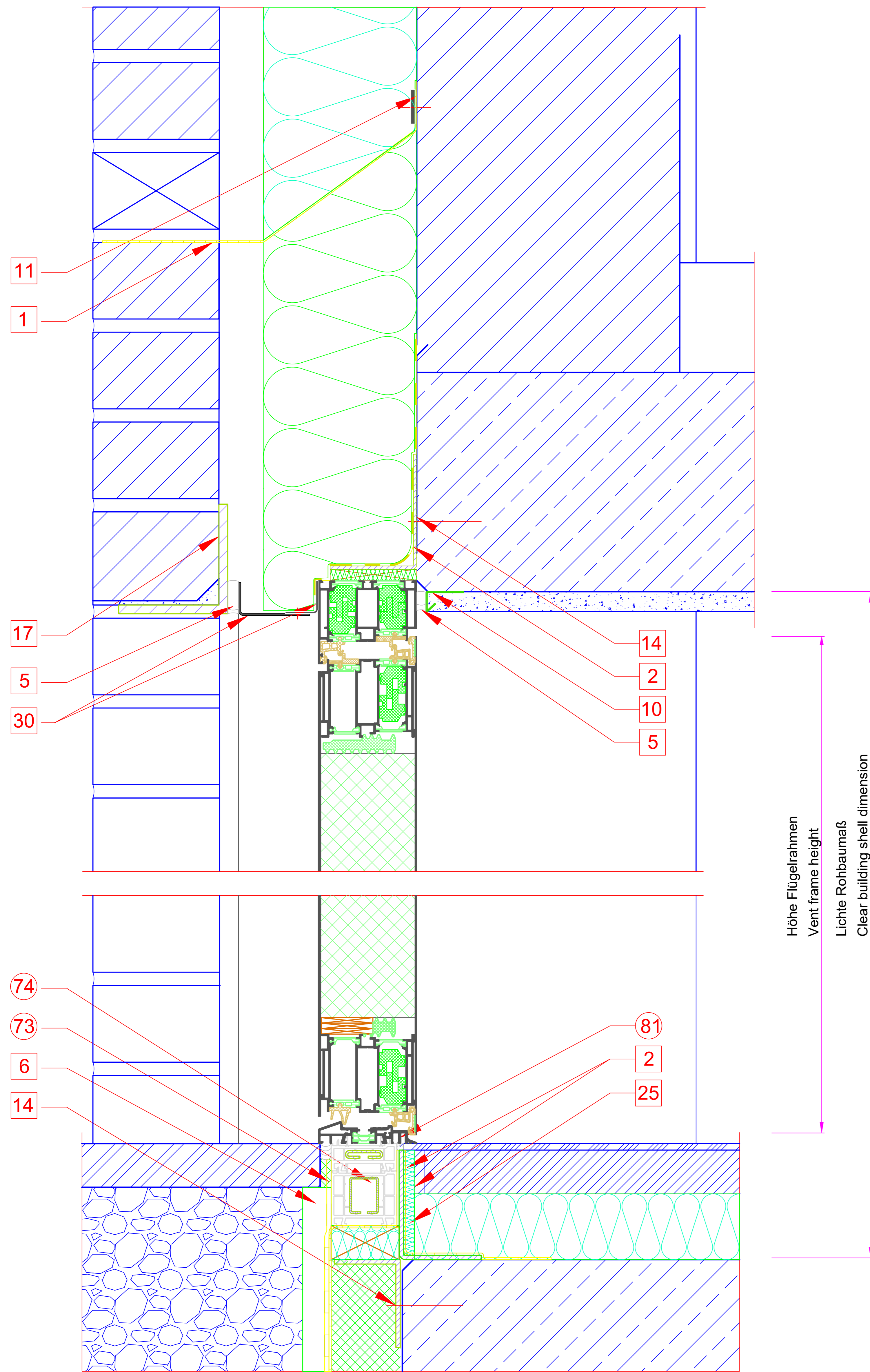
Flügelüberdeckend zweiseitig  
Leaf-enclosing on two sides



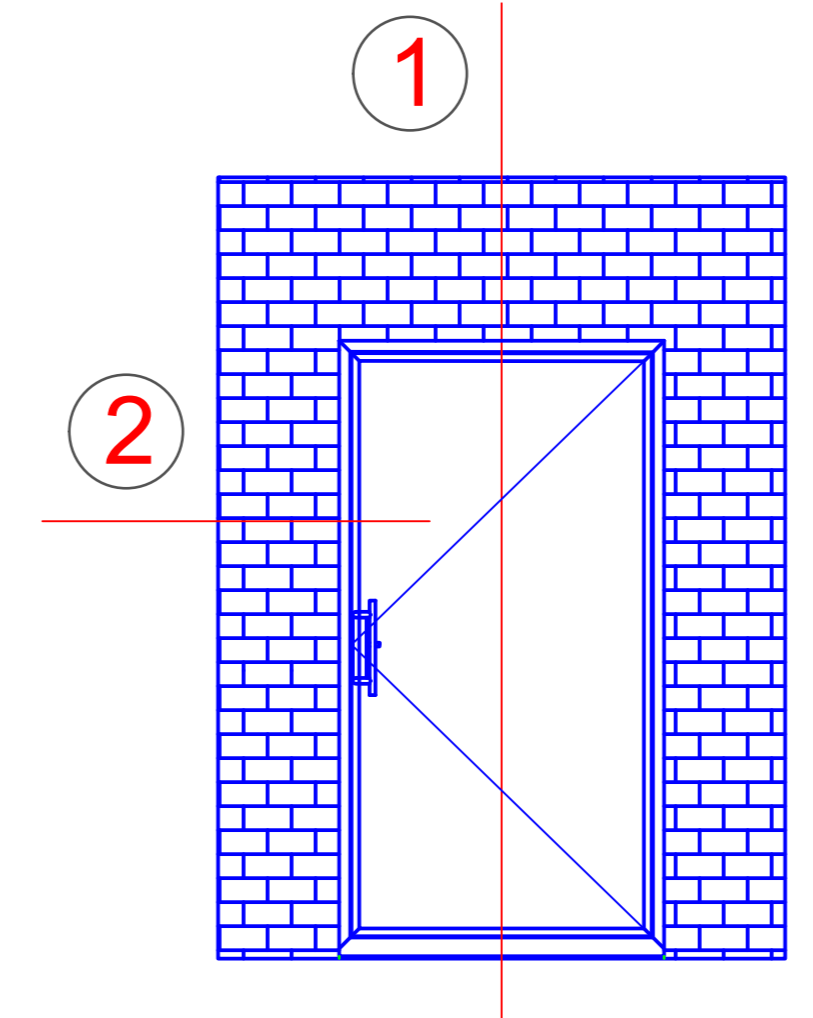
| NO.   | DATE | REVISION | BY  | CHECKED BY |
|---|------|----------|-----|------------|
| 1   | 2024 | 01       | ... | ...        |
| <p>Riva Elementschelle<br/>Riva Unit section details</p> <p>Tür RIVA AD UP 90 St Innen offhend, flächenbündig<br/>Door RIVA AD UP 90 St inward opening, flush-floor</p> |      |          |     |            |
| <p><b>BENEDICT + RIVA</b> <small>BENEDICT + RIVA GmbH<br/>Helmholtzstr. 14<br/>42699 Solingen, Germany</small></p>  |      |          |     |            |

1

Oberer Anschluss  
Top attachment

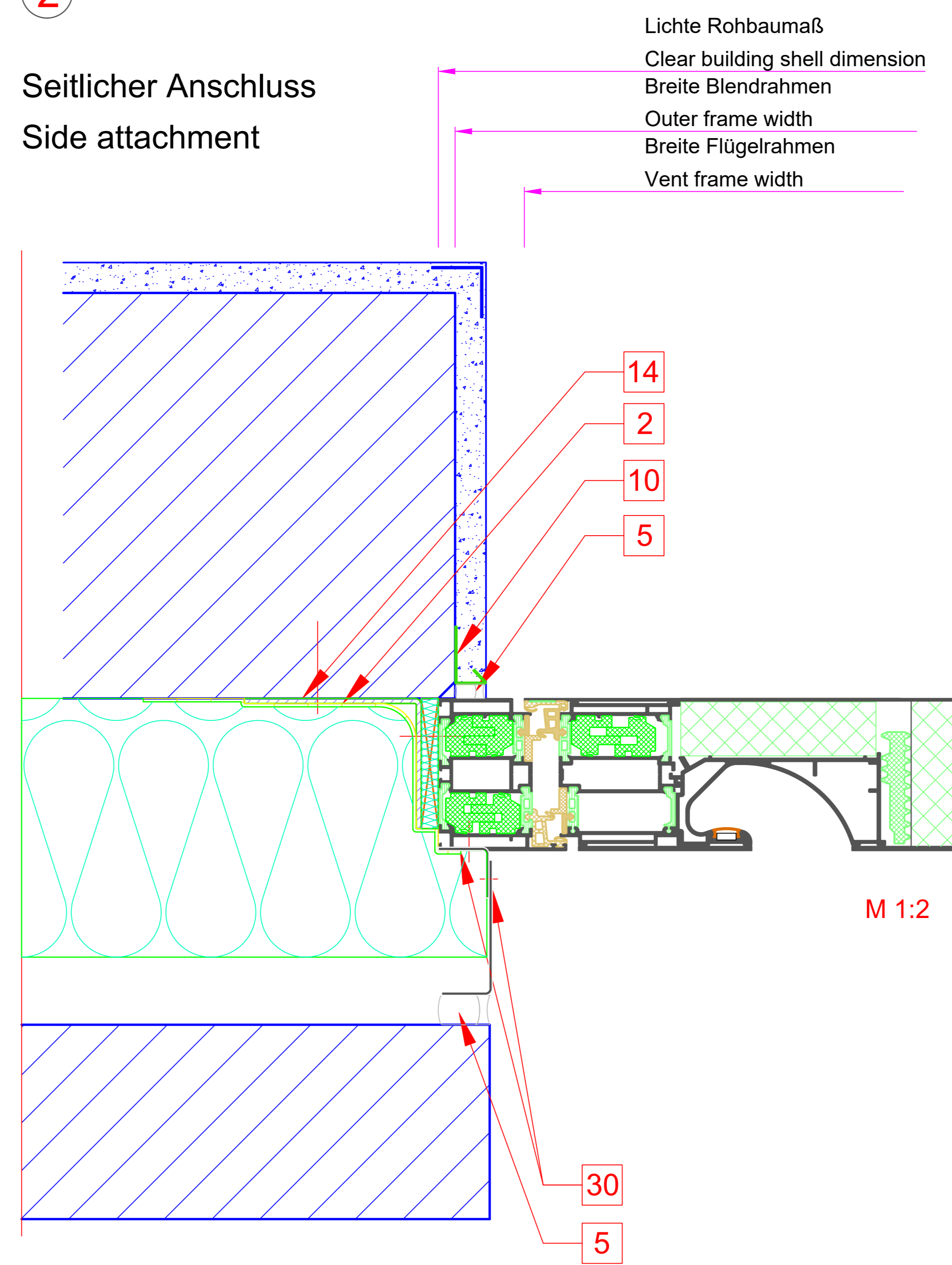


Unterer Anschluss  
Bottom attachment



2

Seitlicher Anschluss  
Side attachment



Konstruktionsmerkmale  
Design features

Nach innen öffnende barrierefreie, flächenbündige Tür mit flügelüberdeckender Füllung in zweischaligem Mauerwerk mit automatisch absenkbarer Türdichtung  
Inward-opening, barrier-free, flush-fitted door with leaf-enclosing infill in double-skin masonry with door seal that lowers automatically

Konstruktionshinweise  
Design information

- 1 Diffusionsoffene Folie  
Breathable foil
- 2 Dampfdiffusionshemmende Folie  
Vapour-resistant foil
- 5 Komprimband  
Compression tape
- 6 Bauwerksabdichtung, bauseits  
Structural weatherproofing, by the customer
- 10 Anputzleiste  
Plaster bead
- 11 Verwahrschiene  
Protection bar
- 14 Winkel nach statischen Erfordernissen  
Angle in accordance with structural requirements
- 17 Abfangung  
Support
- 23 Rinne  
Gutter
- 25 Estrichwinkel  
Screed angle
- 29 Edelstahlblech  
Stainless steel sheet
- 30 Aluminiumblech  
Aluminium sheet
- 73 Basisprofil  
base profile
- 74 Stahlprofil  
steel profile
- 81 KS-Türschwelle  
plastic door threshold

Gesamtlegende siehe Anlage Bautechnik  
See Building Technology appendix for full key

Allgemeine Hinweise  
General information

Alle technischen Angaben und Maße sind vom Verarbeiter zu überprüfen. Die Größenauslegung der Profile muss nach endgültiger statischer Berechnung erfolgen. Vom Vorgewerk kommende Bauwerkstoleranzen müssen geprüft und in der Ausführung berücksichtigt werden. Verbindungsmittel müssen je nach Montagekonzept, statischer Berechnung und den gültigen Normen ausgelegt werden. Die Verarbeitungsrichtlinien sind zu beachten. Alle Haarfugen, Kerb-, T- und Stoßstellen sind nach den Richtlinien einzudichten. Flächenkontakt von Alu- bzw. Stahlprofilen ist durch Dichtbänder zu vermeiden.  
It is the responsibility of the fabricator to check all of the technical details and dimensions. The profile sizing must be carried out after the final structural calculation. The building tolerances from the existing site must be checked and taken into account during implementation. The means of attachment must be designed to suit the type of installation, structural calculations and relevant standards. The fabrication guidelines must be observed. All hairline joints, notches, T-joints and butt joints must be sealed in accordance with the guidelines. Surface CONTACT PERSON between aluminium and steel profiles must be prevented by using sealing tape.

| NO.   | DATE | REVISION | REVISION | REVISION |
|---|------|----------|----------|----------|
| 1   | 2017 | 01       | 01       | 01       |
| Riva Baukörperanschlüsse<br>Riva Attachments to building structure                                      |      |          |          |          |
| Tür RIVA AD UP 90 SI innen öffnend, flächenbündig<br>Door RIVA AD UP 90 SI inward opening, flush-fitted |      |          |          |          |
| BENEDICT + RIVA<br>BENEDICT - RIVA GmbH<br>Hauptstraße 19<br>42699 Solingen, Germany                    |      |          |          |          |