

Einsatzelemente sind in Fassadensysteme zu finden  
Insert units can be found in façade systems

## Technische Informationen

### Technical information

#### Prüfungen und Normen

##### Tests and standards

Wärmedämmung nach DIN EN ISO 1077-2 Thermal insulation in accordance with DIN EN ISO 1077-2	$U_f = 2,21 \text{ W/(m}^2\text{K)}$
Schalldämmung nach DIN EN ISO 140-3 Sound reduction in accordance with DIN EN ISO 140-3	bis $R_w$ 43 dB Up to $R_w$ 43 dB
Einbruchhemmung nach DIN V ENV 1627 (DIN EN 1627) Burglar resistance in accordance with DIN V ENV 1627 (DIN EN 1627)	Klasse WK3 (RC 3) Class WK3 (RC 3)
Luftdurchlässigkeit nach DIN EN 12207 Air permeability in accordance with DIN EN 12207	Klasse 2 Class 2
Schlagregendichtheit nach DIN EN 12208 Watertightness in accordance with DIN EN 12208	Klasse 5A Class 5A
Windlastwiderstand nach DIN EN 12210 * Wind load resistance in accordance with DIN EN 12210	Klasse 2 Class 2
Mechanische Beanspruchung nach DIN EN 13115 Mechanical loading in accordance with DIN EN 13115	Klasse 2 Class 2
Dauerfunktion nach DIN EN 12400 Durability in accordance with DIN EN 12400	Klasse 6 Class 6

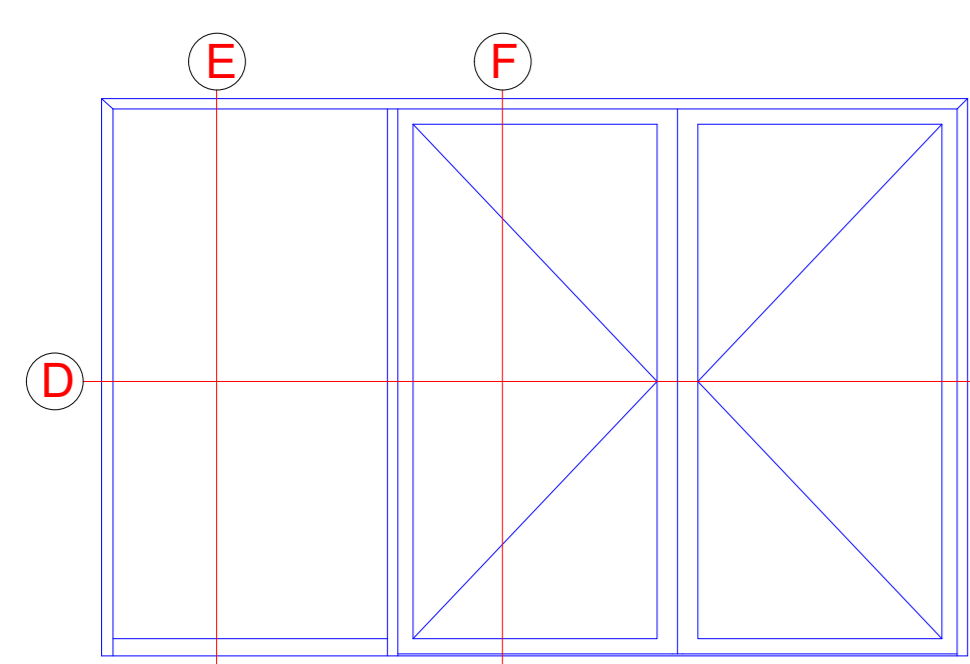
\* Durchbiegungsverhalten profilabhängig  
The amount of deflection will depend on the profile

\*\* Die Angaben beschreiben die Bestwerte des Gesamtsystems bei innen als auch außen öffnenden Ausführungen. Die Eigenschaften einer jeweils gewählten Ausführungsvariante oder Elementkombination sind im Einzelfall anhand der ausführlichen Prüfdokumentation zu bestimmen.  
The information describes the optimum values of the entire system for both inward and outward-opening designs. The properties of a selected design option or unit combination have to be determined individually based on the comprehensive test documentation.

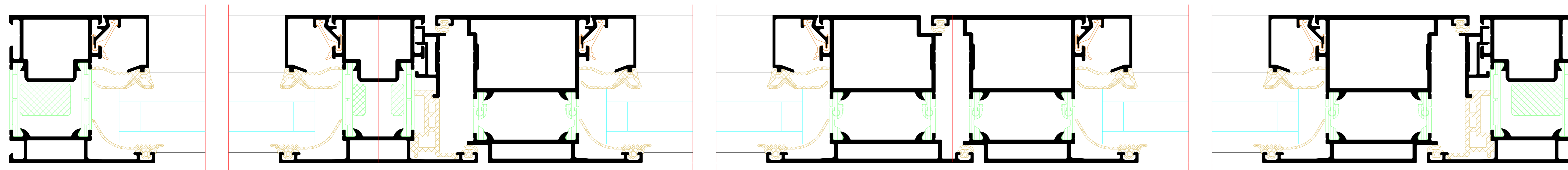




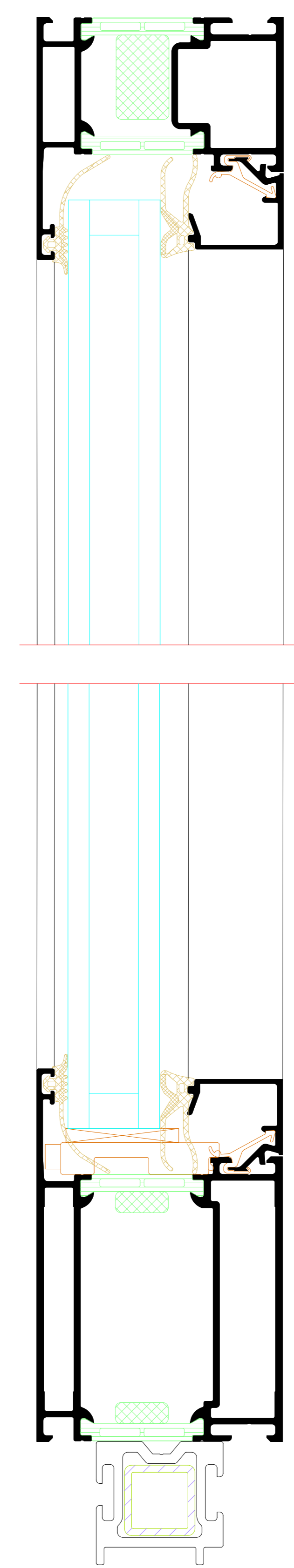
Zweiflügelige Tür mit Festfeld  
 Double-leaf door with fixed light



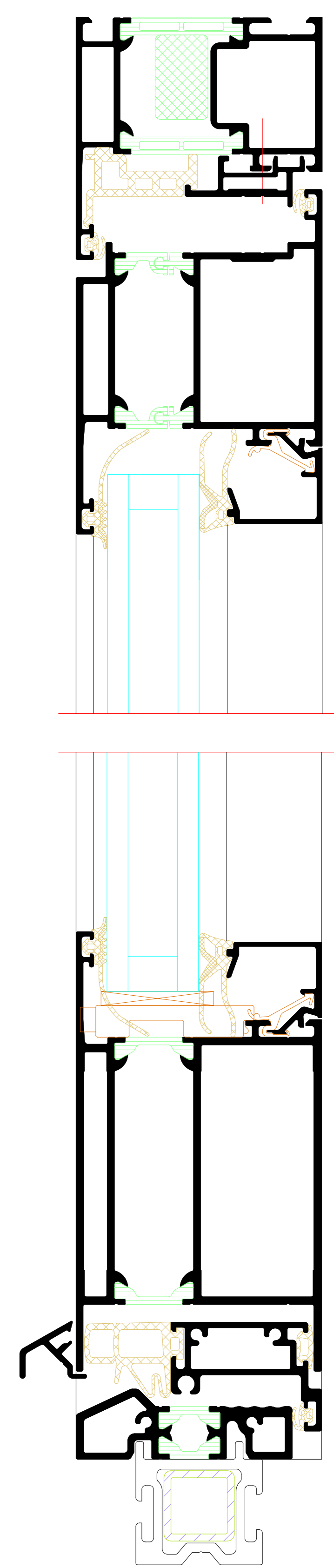
D



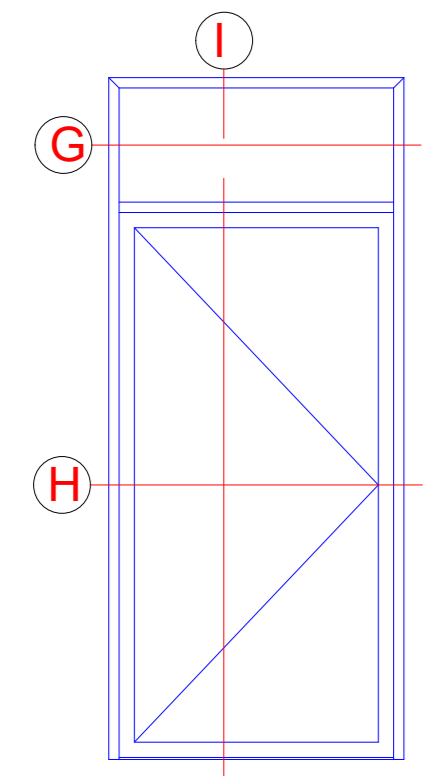
E



F



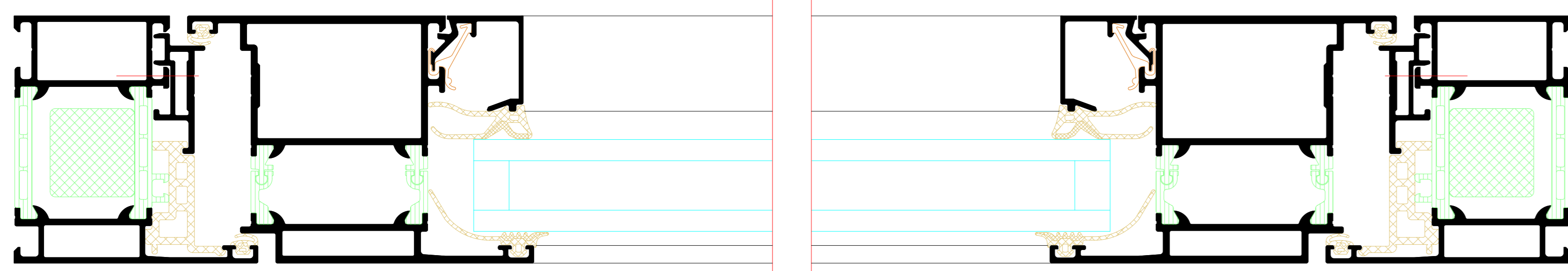
Einfügelige Tür mit Oberlicht  
Single-leaf door with toplight



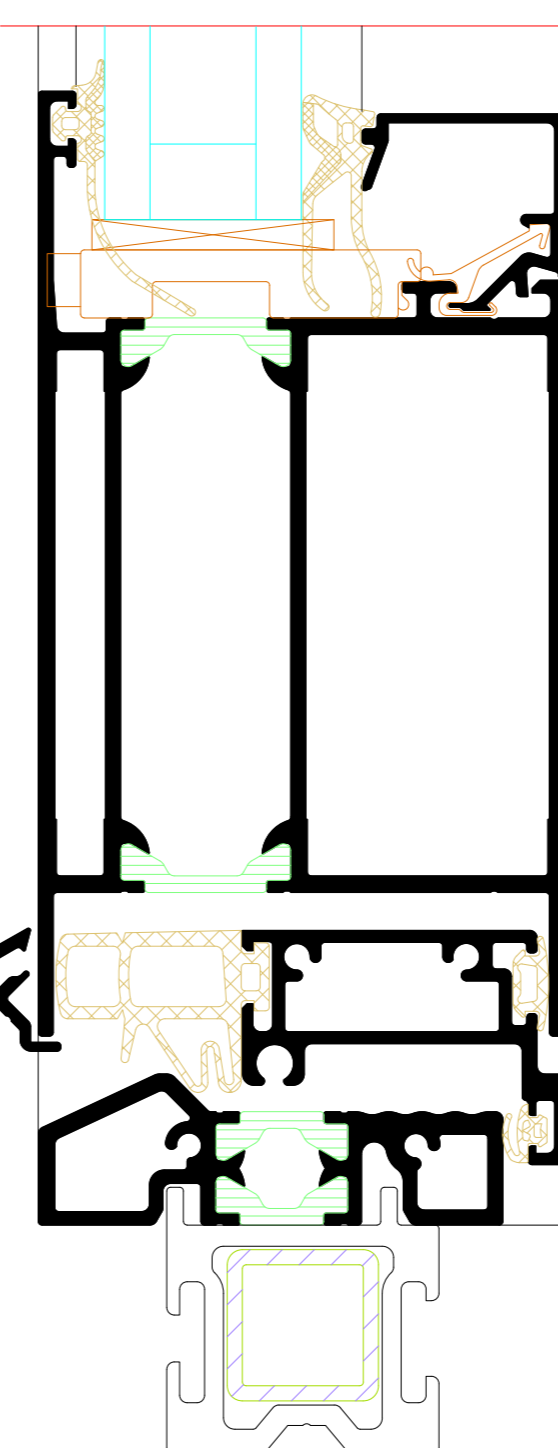
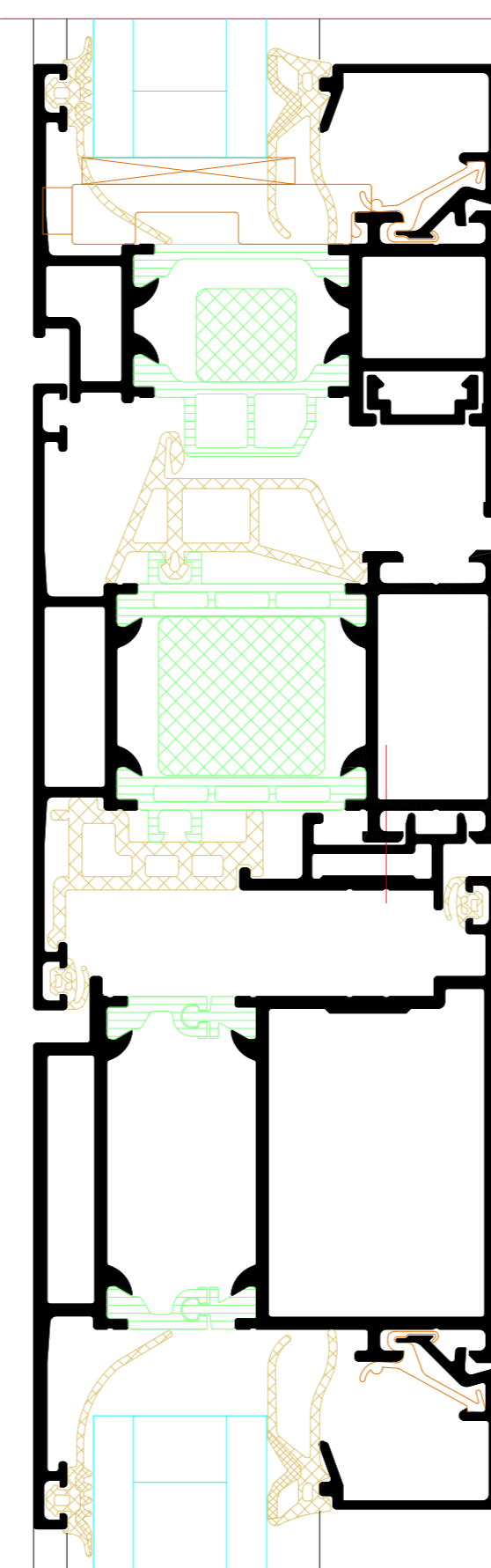
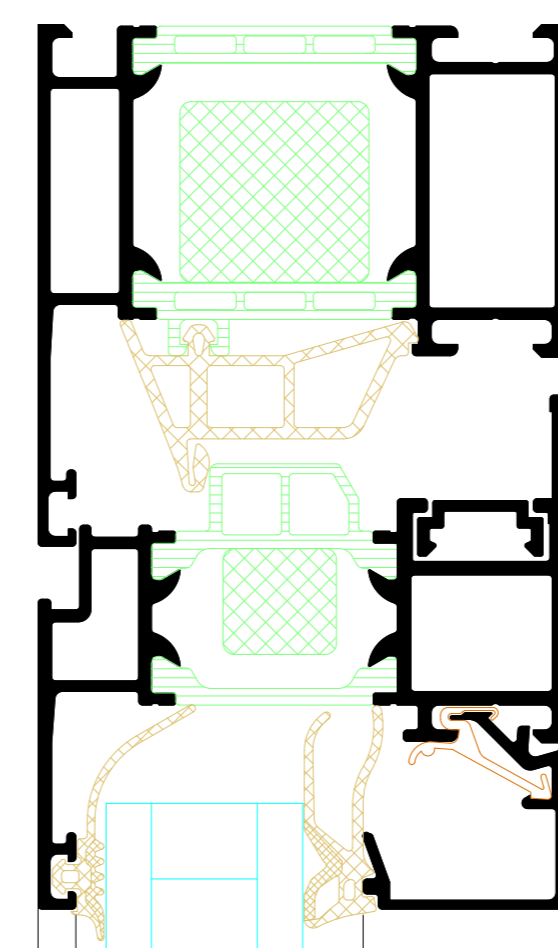
G



H



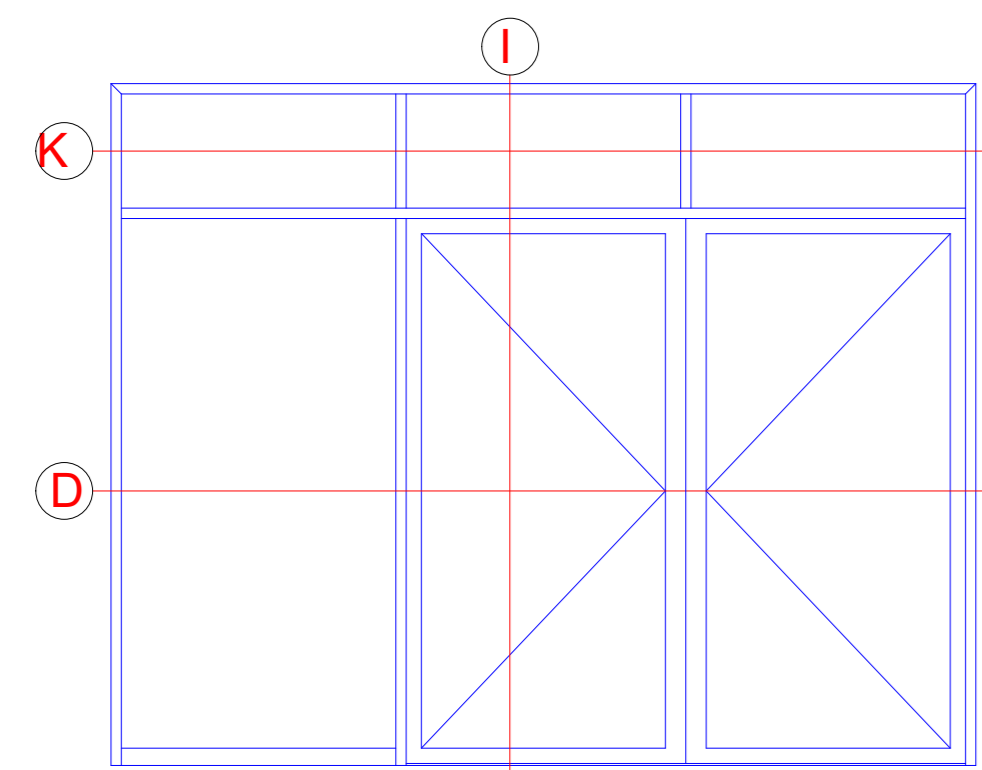
I



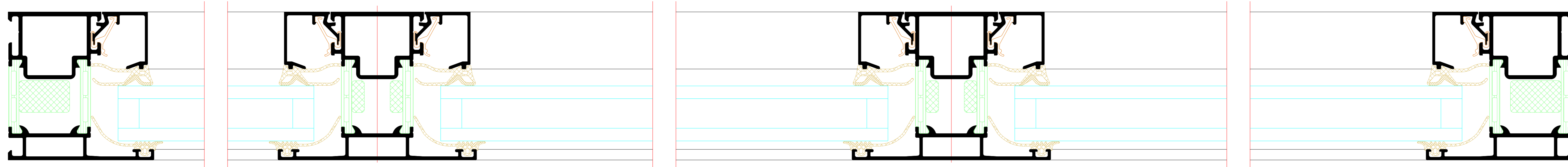
NO.	DATE	ISSUED	REVISION	BY	CHECKED	DATE
001	01.01.2023	01				
<p>Riva Elementschelle Riva Unit section details</p> <p>Tür RIVA ADS F10 HD Innen öffnend, 1-fügelig Door RIVA ADS F10 HD inward opening, flush-fitted</p>						
<p><b>BENEDICT + RIVA</b> <b>BENEDICT + RIVA GmbH</b> Helmweg 11, 42699 Solingen, Germany</p>						



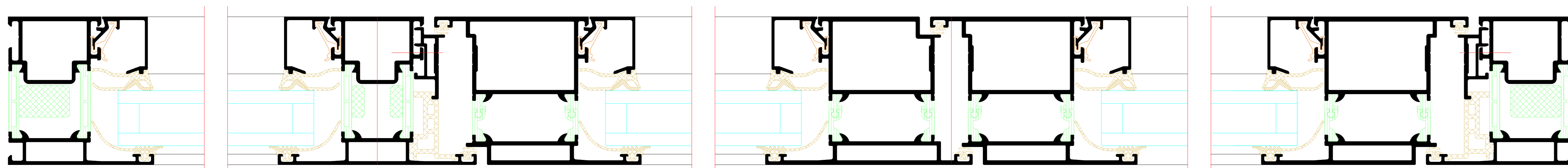
Zweiflügelige Tür mit Festfeld und Oberlicht  
 Double-leaf door with fixed light and toplight



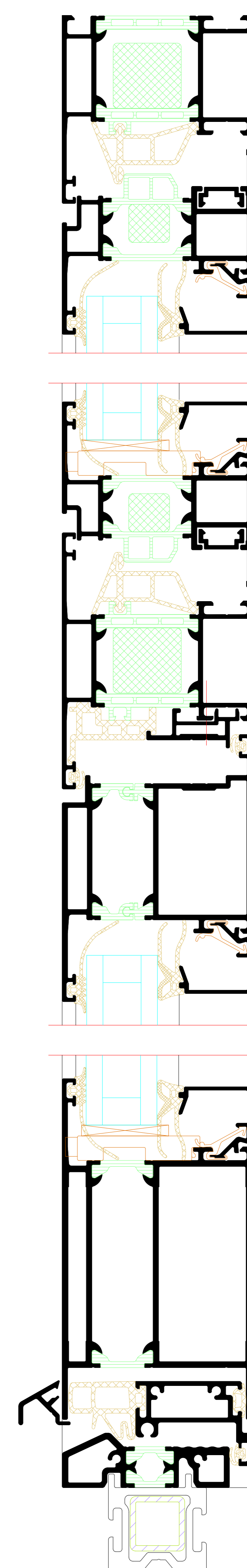
K



D



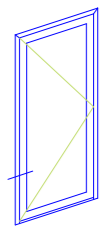
I



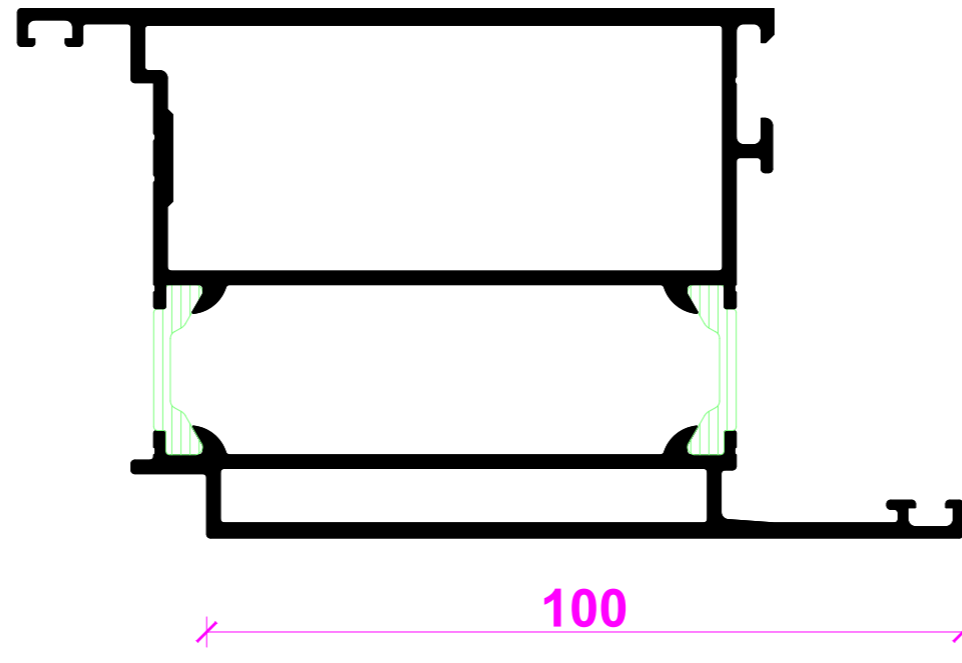
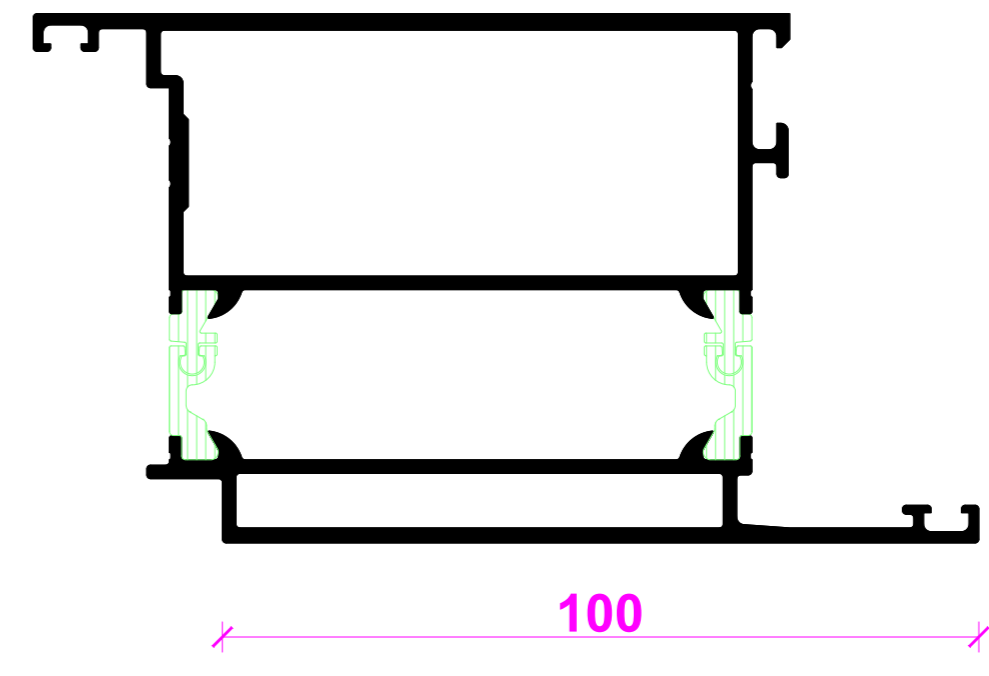
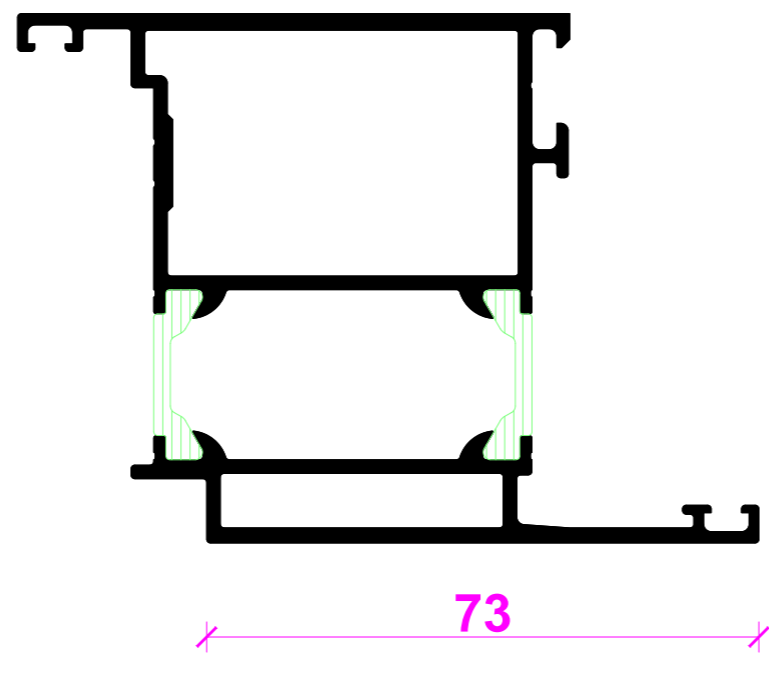
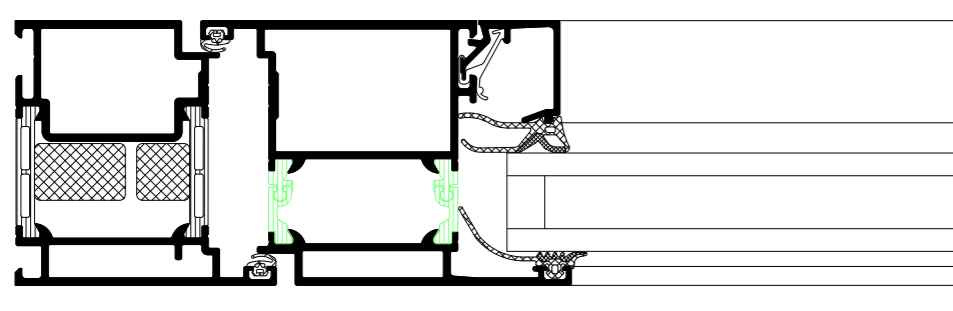
NO.	DATE	REVISION	BY	CHECKED	GROUP
001	01.10.2018	01	...	...	...
Riva Elementarchelle Riva Unit section details					
Tür RIVA ADS F10 HD Innen öffnend, fächerbündig Door RIVA ADS F10 HD inward opening, flush-faced					
BENEDICT + RIVA RIVA - RIVA GmbH Hermannstraße 19 68504 Ludwigshafen, Germany					



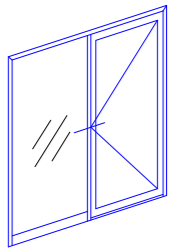
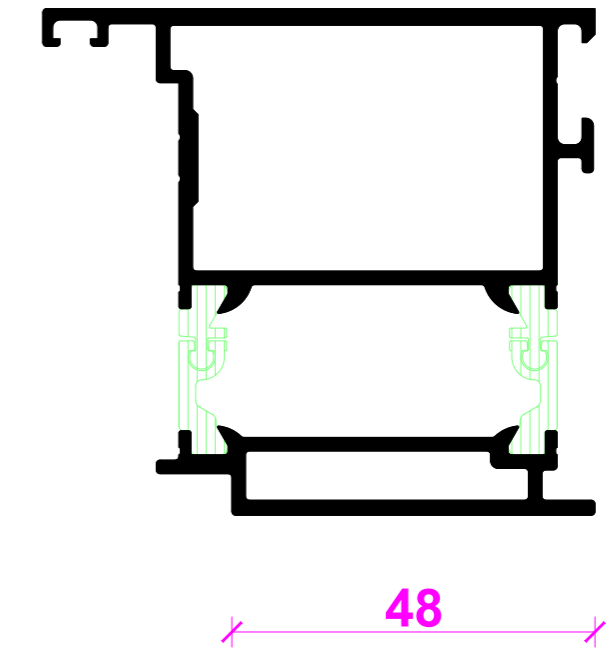




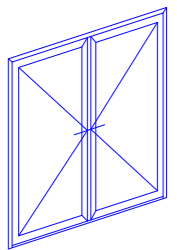
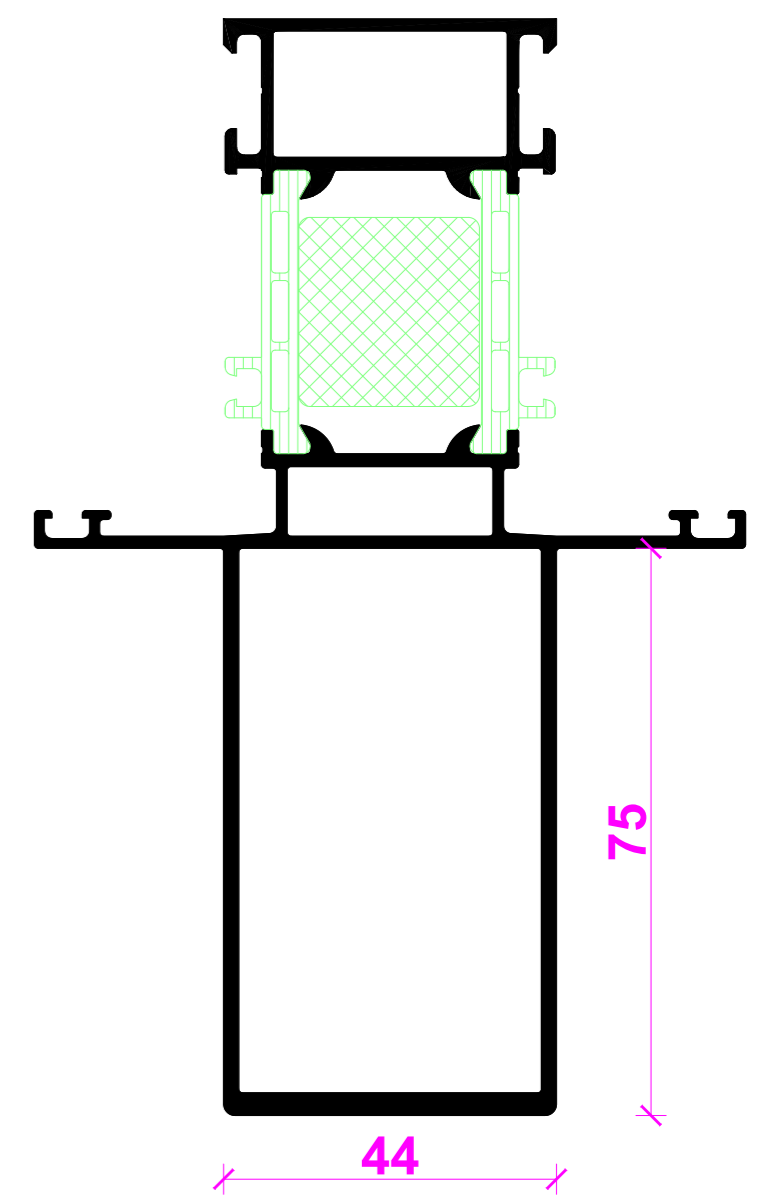
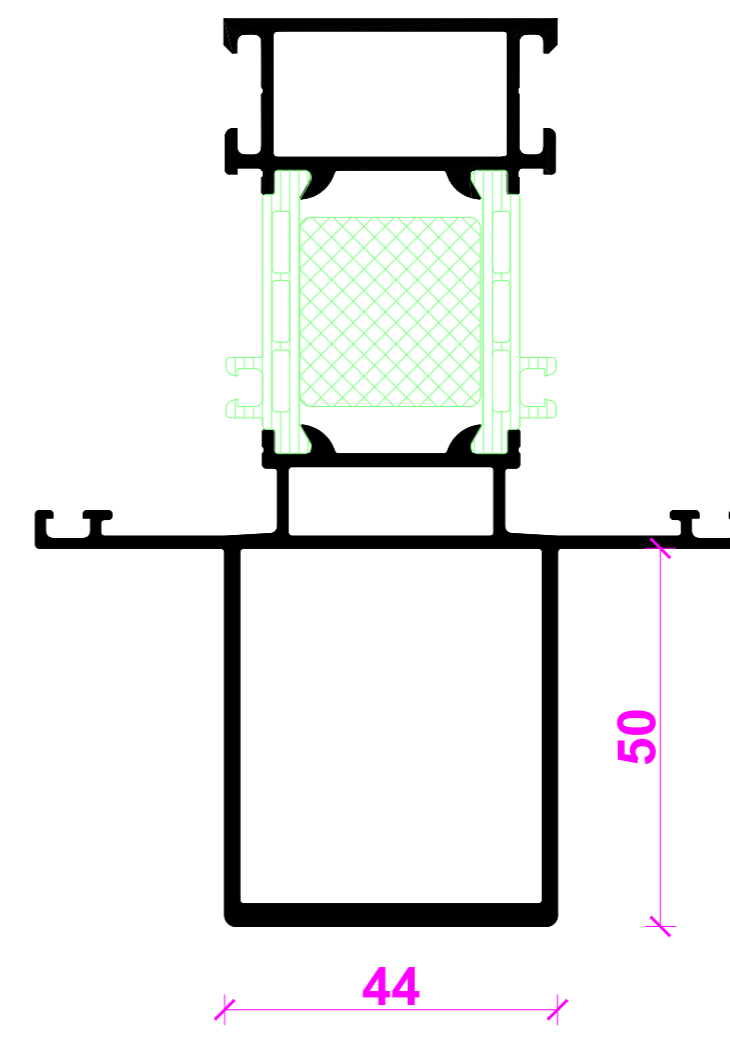
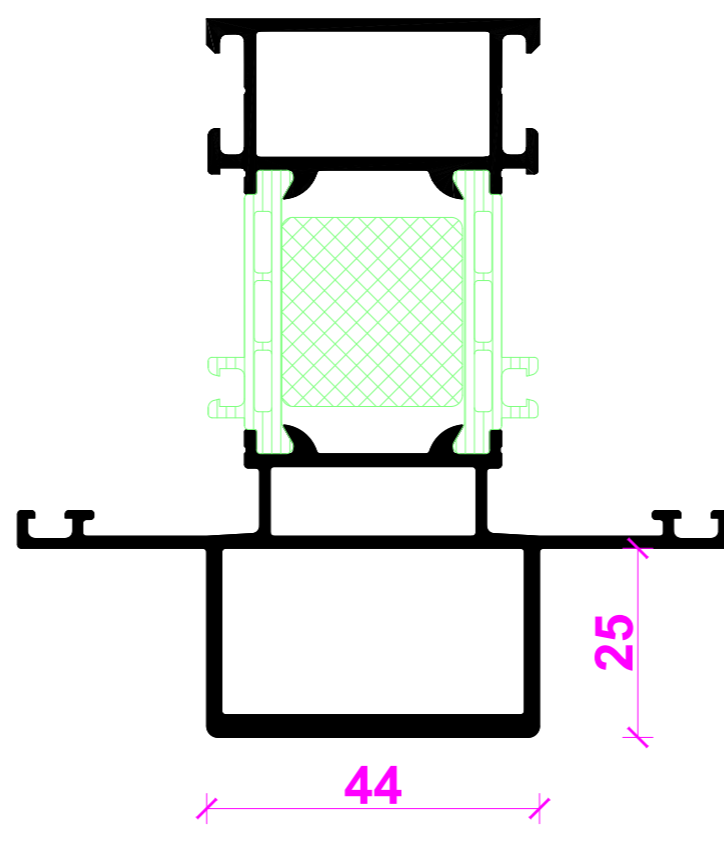
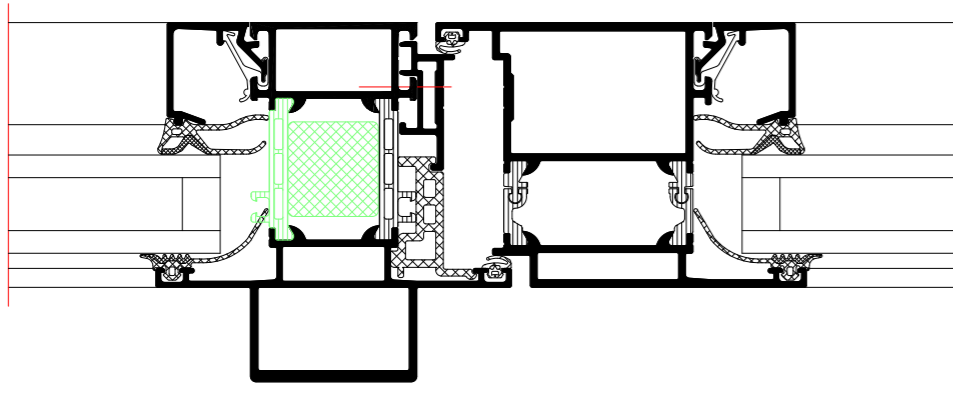
Flügelprofil  
Leaf profile



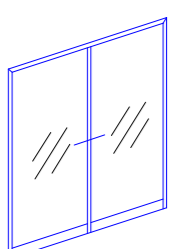
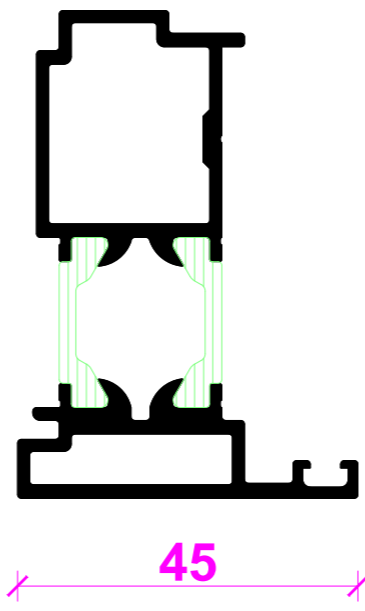
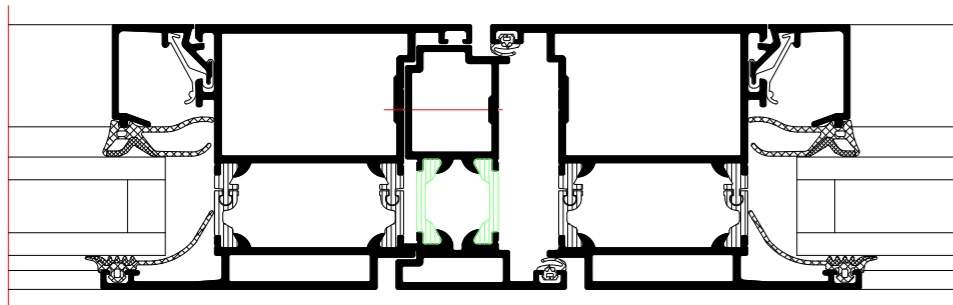
Flügelüberdeckend einseitig  
Leaf-enclosing on one side



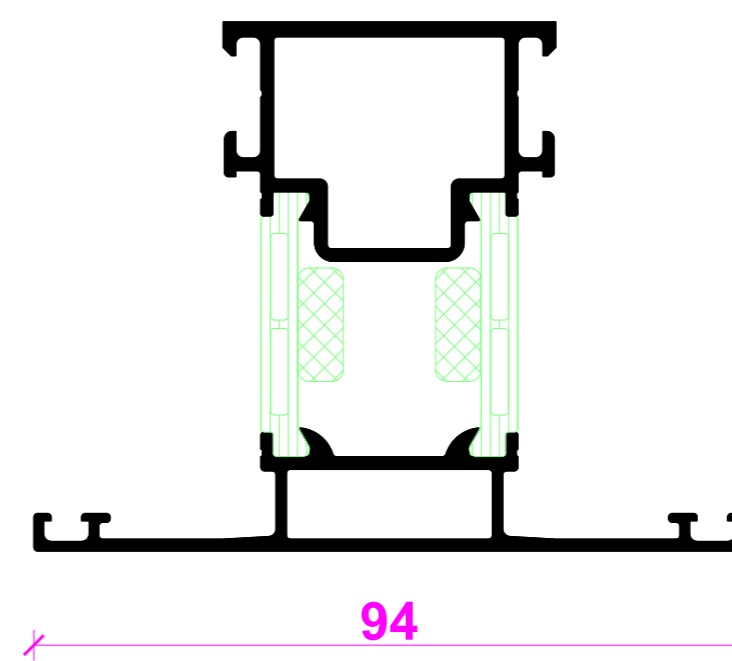
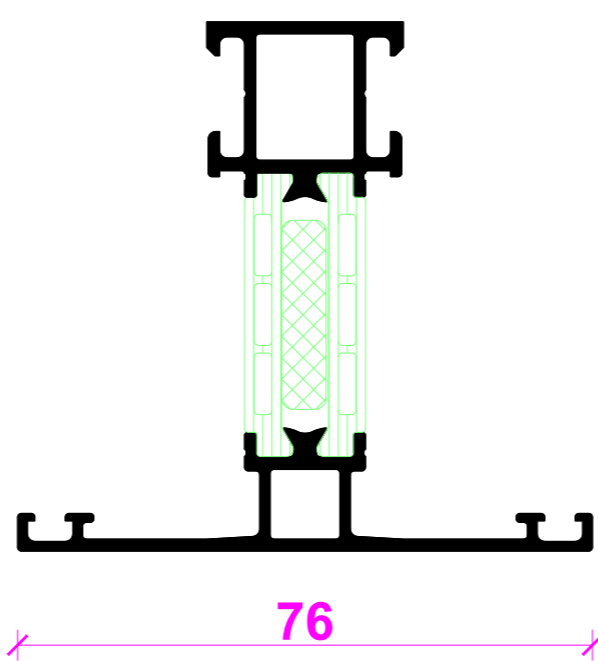
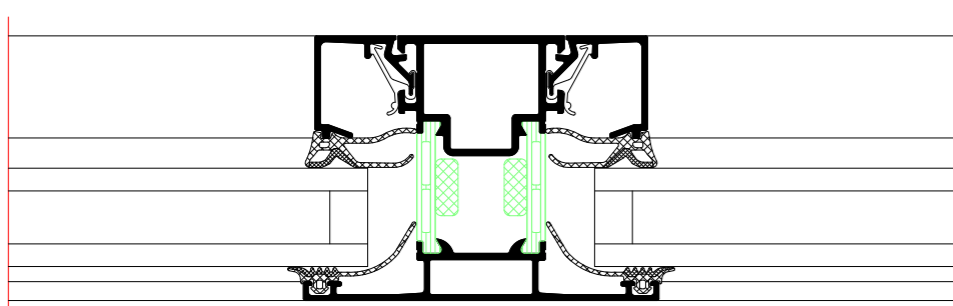
Statikpfosten  
Structural mullion



Stulpprofil  
Meeting stile profile



Riegel/Pfosten  
Transom/mullion



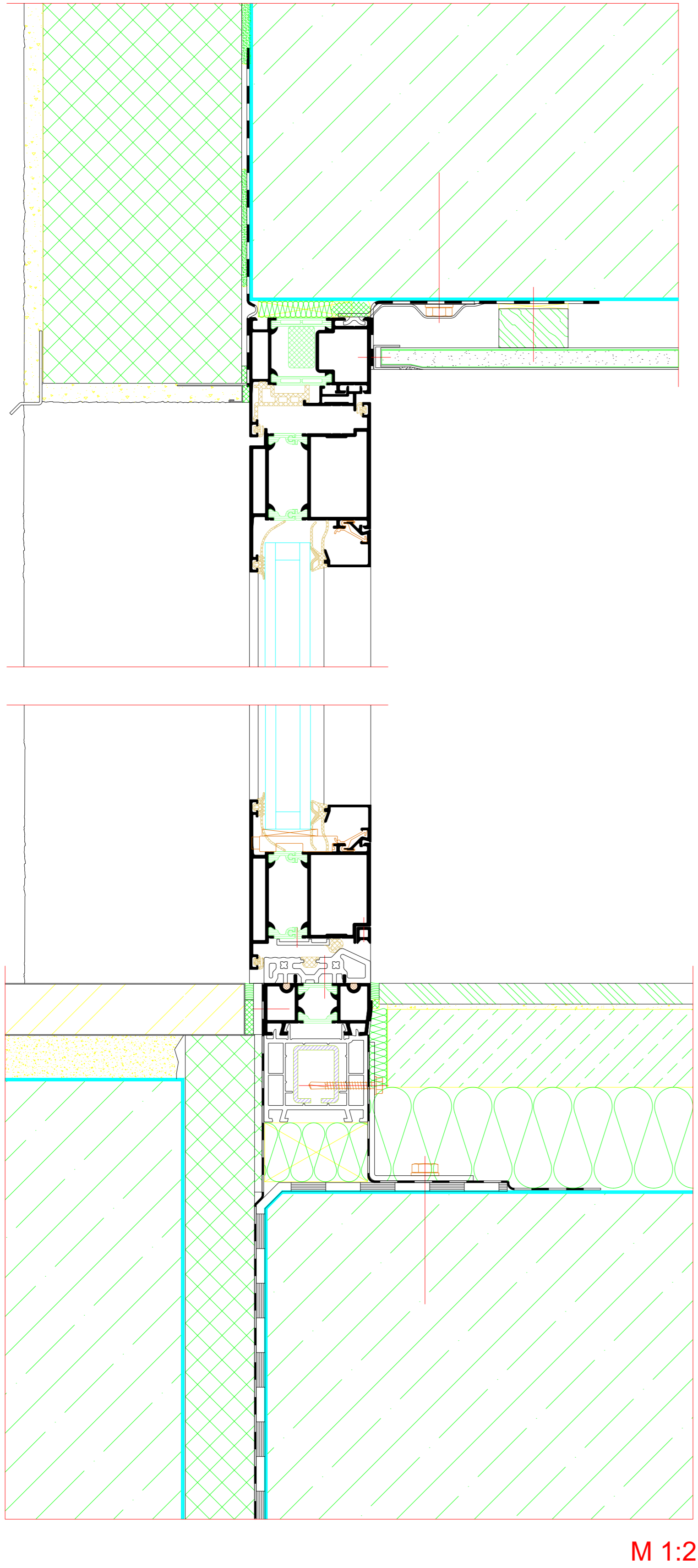
INDEX	DATE	ÄNDERUNG	GEZEICHNET	GEPRÜFT
NIECE	DATE	CHANGE	DESIGNED BY	CHECKED BY
PLANNUMMER				
PLAN DATE				
PROJECT				
Riva Profilsysteme				
Riva Profile systems				
PROJECT				
Tür RIVA ADS 70 HD Innen öffnend, flächenbündig				
Door RIVA ADS 70 HD inward opening, flush-fitted				
MAKER				
CLIENT				
PLANNERS				
BENEDICT + RIVA				
BENEDICT + RIVA GmbH				
Röcklestrasse 13				
04320 Leipzig, Germany				
ANSCHREIBPARTNER	STATUS	PLANNUMMER	MASSSTAB	GEZEICHNET
CONTACT PERSON	STATUS	FORMAL	SCALE	DESIGNED BY
PLANNING TYPE	STATUS	DATE		CHECKED BY
PLANNUMMER				DATE
DOCUMENT NUMBER				



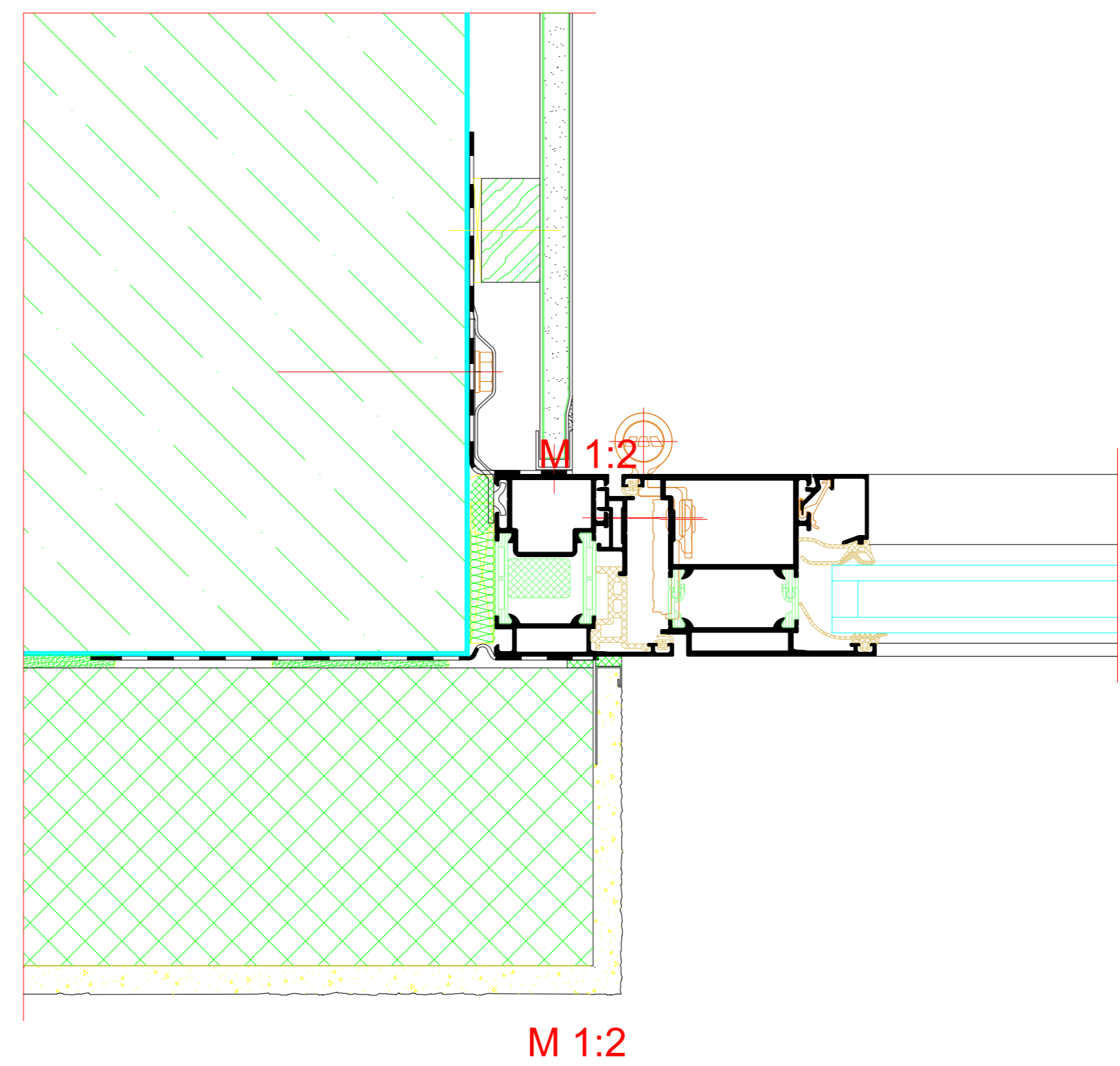


Wand mit WDVS  
 Wall with composite thermal insulation system

Oberer Anschluss  
 Top attachment



Seitlicher Anschluss  
 Side attachment



Unterer Anschluss  
 Bottom attachment

INDEX	DATE	ÄNDERUNG	GEZEICHNET	GEPRÜFT	
NEIG.	DATE	CHANGE	DESIGNED BY	CHECKED BY	
PLANNUMMER	STATUS	PLANNUMMER	MAßSTAB	GEZEICHNET	GEPRÜFT
PLAN OBJECT	STATUS	PLAN OBJECT	SCALE	DESIGNED BY	CHECKED BY
PLANNUMMER	STATUS	PLANNUMMER	MAßSTAB	GEZEICHNET	GEPRÜFT
PLAN OBJECT	STATUS	PLAN OBJECT	SCALE	DESIGNED BY	CHECKED BY
PLANNUMMER	STATUS	PLANNUMMER	MAßSTAB	GEZEICHNET	GEPRÜFT
PLAN OBJECT	STATUS	PLAN OBJECT	SCALE	DESIGNED BY	CHECKED BY

PROJEKT  
 Riva Baukörperanschlüsse  
 Riva Attachments to building structure

PROJEKT  
 Tür RIVA ADS 70 HD Innen öffnend, flächenbündig  
 Door RIVA ADS 70 HD inward opening, flush-fitted

BAUHER  
 CLIENT

PLANNUMMER  
 PLANNER

PROJEKT  
**BENEDICT + RIVA**  
 BENEDICT + RIVA GmbH  
 Röselstrasse 13  
 04229 Leipzig, Germany

ANSCHLUSSPARTNER  
 CONTACT PARTNER

PLANNUMMER  
 STATUS

PLANNUMMER  
 STATUS

PLANNUMMER  
 STATUS

PLANNUMMER  
 STATUS