

Technische Informationen

Technical information

Prüfungen und Normen *

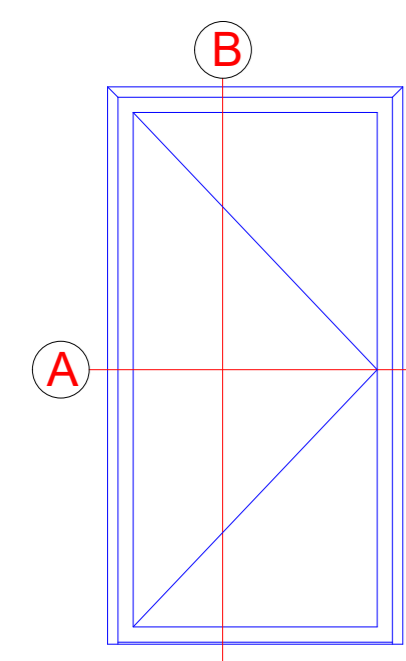
Tests and standards

Wärmedämmung nach DIN EN ISO 1077-2 Thermal insulation in accordance with DIN EN ISO 1077-2	$U_f = 1,6 - 2,1 \text{ W/(m}^2\text{K)}$
Schalldämmung nach DIN EN ISO 140-3 Sound reduction in accordance with DIN EN ISO 140-3	bis R_w 43 dB Up to R_w 43 dB
Einbruchhemmung nach DIN V ENV 1627 Burglar resistance in accordance with DIN V ENV 1627	Klasse WK3 Class WK3
Luftdurchlässigkeit nach DIN EN 12207 Air permeability in accordance with DIN EN 12207	Klasse 2 Class 2
Schlagregendichtheit nach DIN EN 12208 Watertightness in accordance with DIN EN 12208	bis Klasse 5A Up to class 5A
Windlastwiderstand nach DIN EN 12210 Wind load resistance in accordance with DIN EN 12210	Klasse C3 Class C3
Dauerfunktion nach DIN EN 12400 Durability in accordance with DIN EN 12400	Klasse 5 Class 5

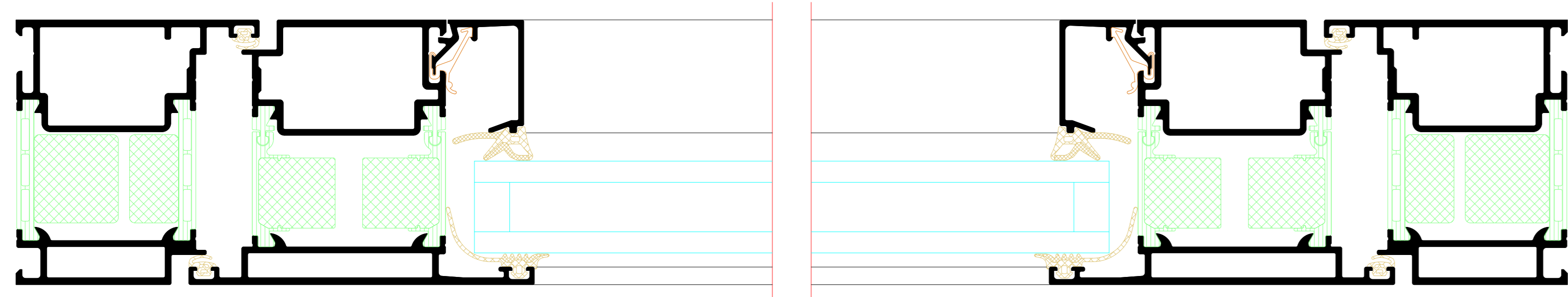
* Die Angaben beschreiben die Bestwerte des Gesamtsystems bei innen als auch außen öffnenden Ausführungen. Die Eigenschaften einer jeweils gewählten Ausführungsvariante oder Elementkombination sind im Einzelfall anhand der ausführlichen Prüfdokumentation zu bestimmen.

The information describes the optimum values of the entire system for both inward and outward-opening designs. The properties of a selected design option or unit combination have to be determined individually based on the comprehensive test documentation.

Einfügelige Tür
Single-leaf door

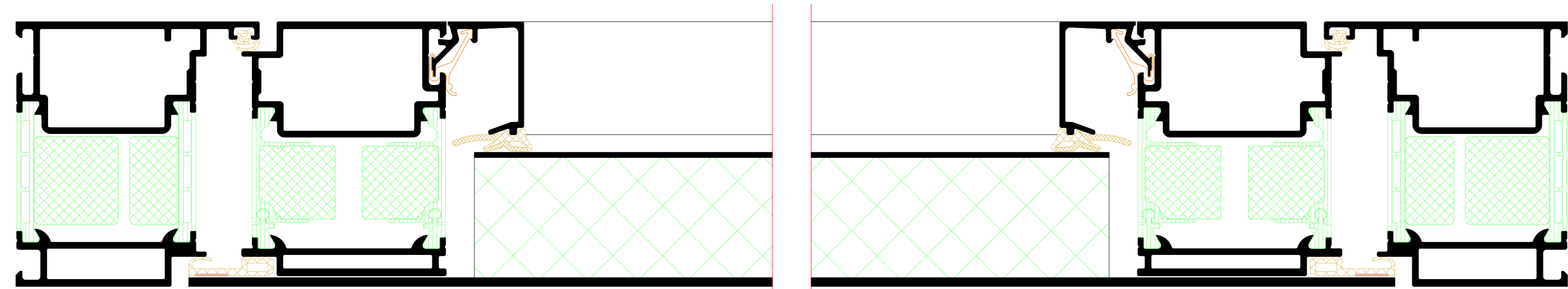


A

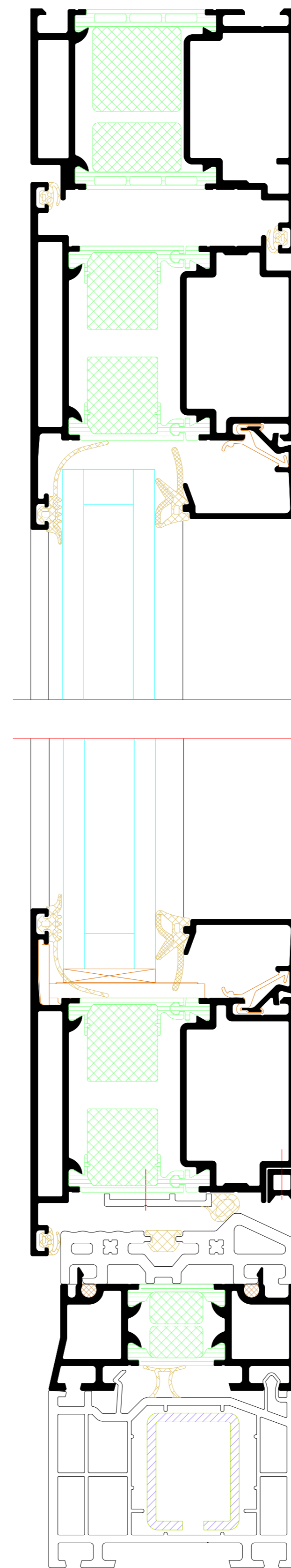


A

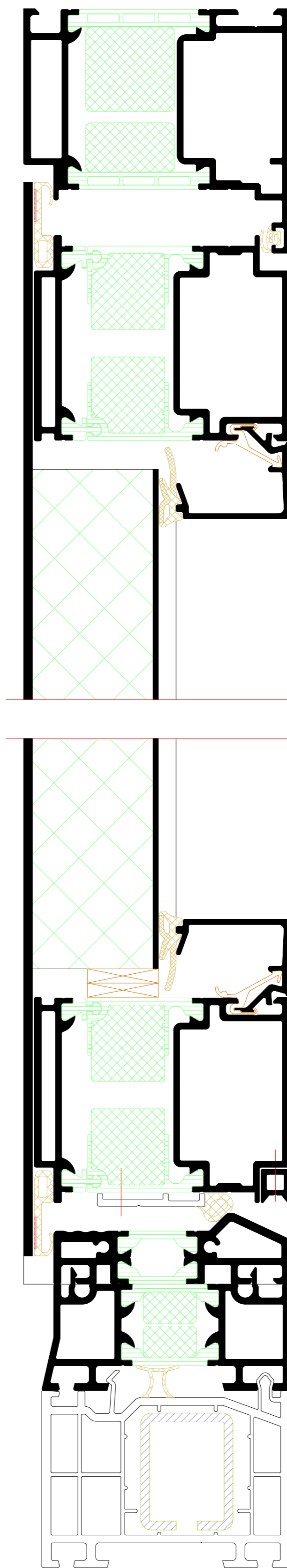
Flügelüberdeckend einseitig
Leaf-enclosing on one side



B



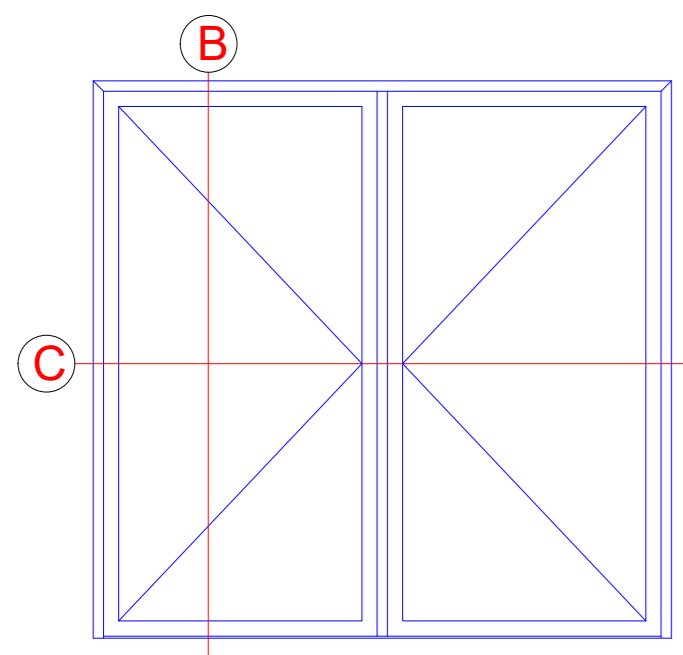
B



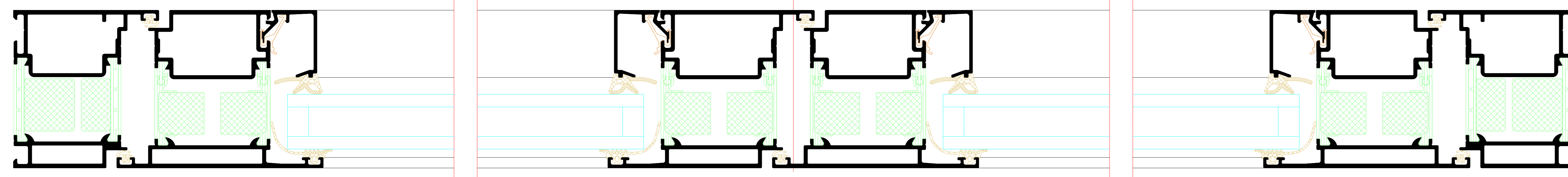
Flügelüberdeckend einseitig
Leaf-enclosing on one side

NO.	DATE	REVISION	BY	CHECKED	GROUP
001	2018	01
<p>Riva Elementschelle Riva Unit section details</p> <p>Tür RIVA ADS FS Si Außen öffnend, flügelbündig Door RIVA ADS FS Si outward opening, flush-fitted</p>					
<p>BENEDICT + RIVA BENEDICT + RIVA GmbH Helmholtzstrasse 19 42699 Solingen, Germany</p>					

Zweiflügelige Tür
Double-leaf door

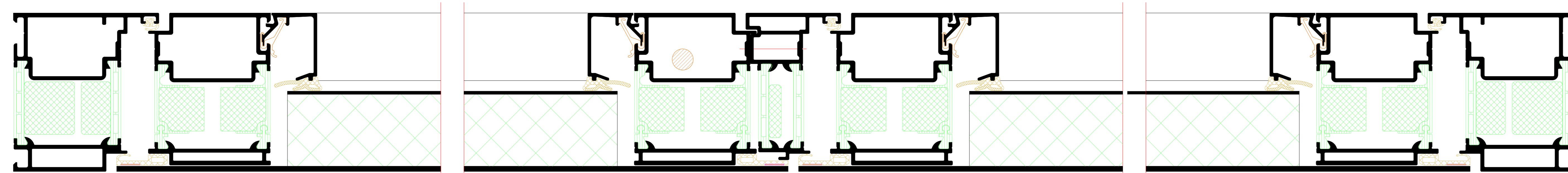


C

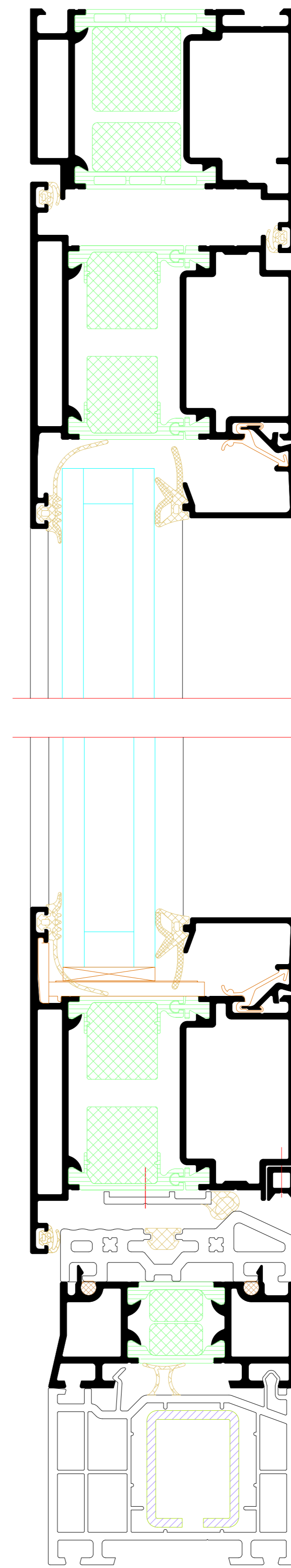


C

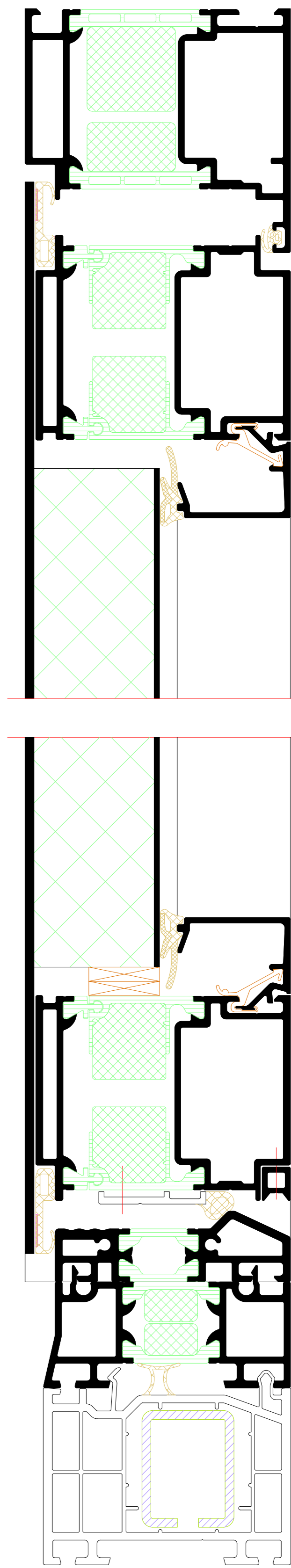
Flügelüberdeckend einseitig
Leaf-enclosing on one side



B



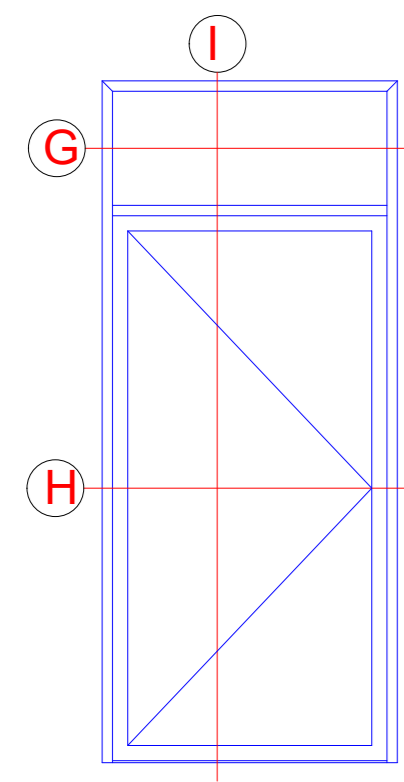
B



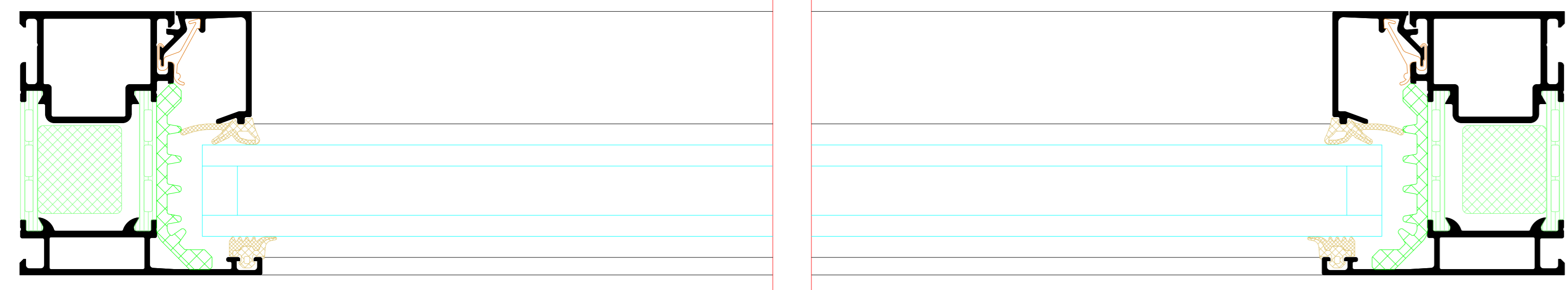
Flügelüberdeckend einseitig
Leaf-enclosing on one side

NO.	DATE	REVISION	BY	CHECKED	GROUP
001	2024	01
<p>Riva Elementschelle Riva Unit section details</p> <p>Tür RIVA ADS FS Si Außen öffnend, flächenbündig Door RIVA ADS FS Si outward opening, flush-fitted</p>					
<p>BENEDICT + RIVA BENEDICT + RIVA GmbH Helmholtzstr. 19 42699 Solingen, Germany</p>					

Einfügelige Tür mit Oberlicht
Single-leaf door with toplight



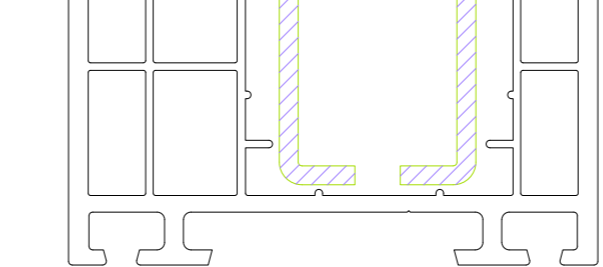
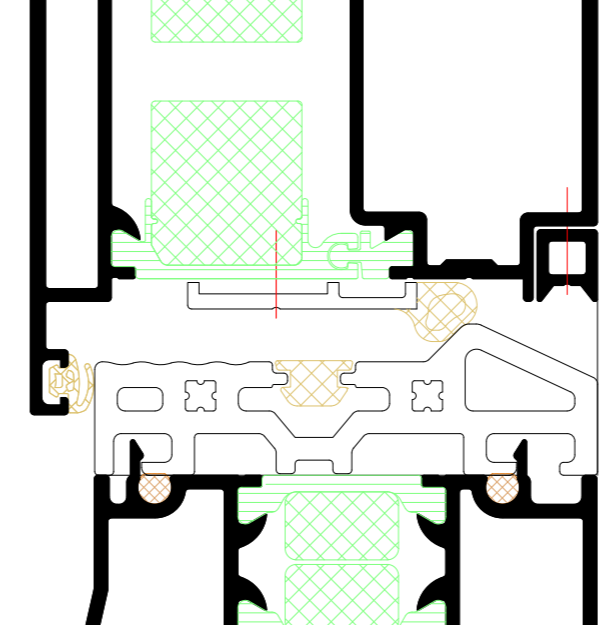
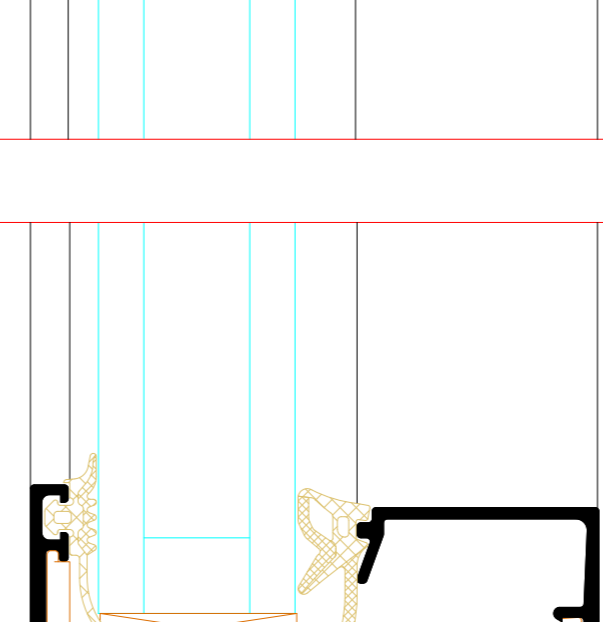
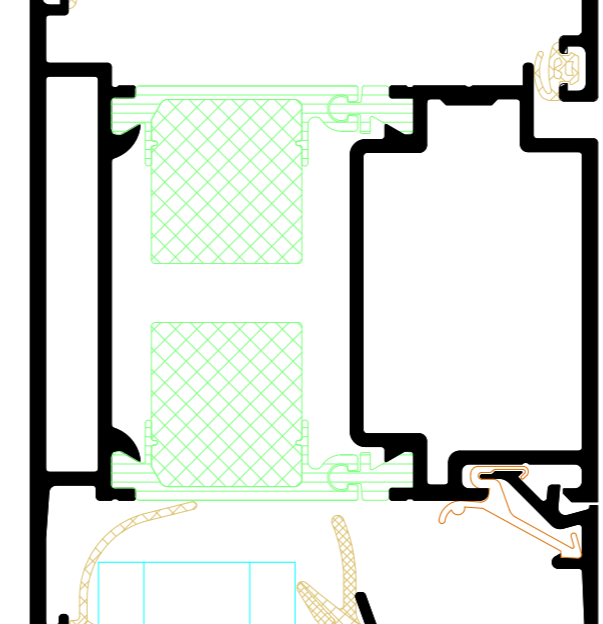
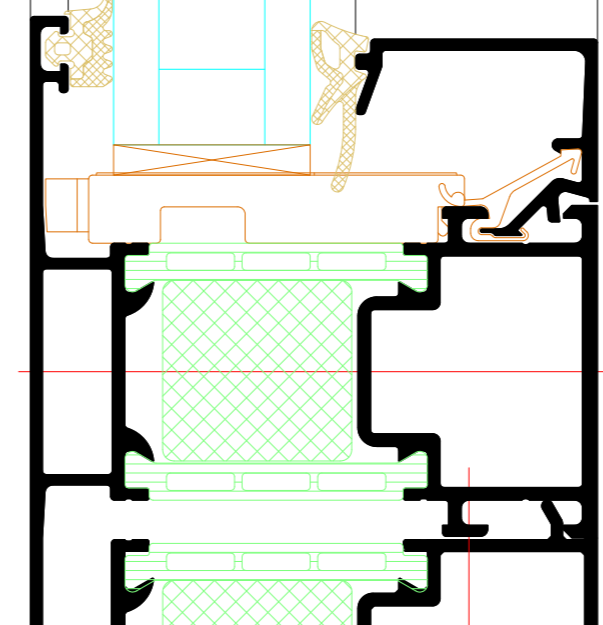
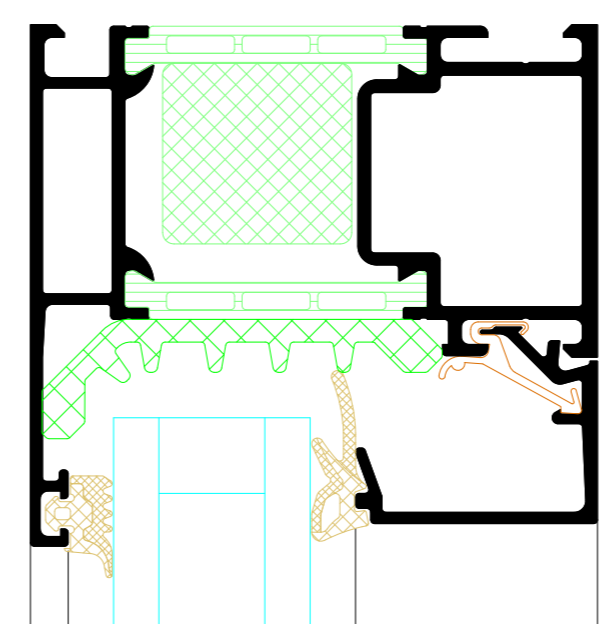
G



H

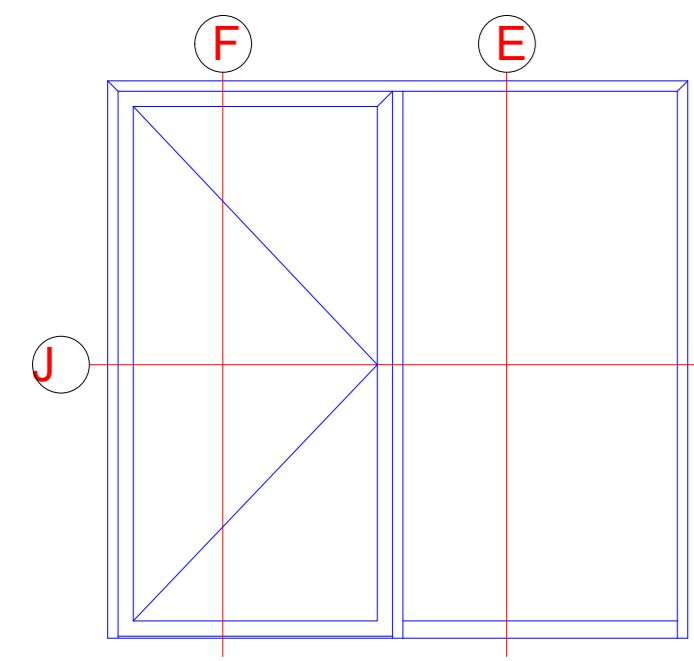


I

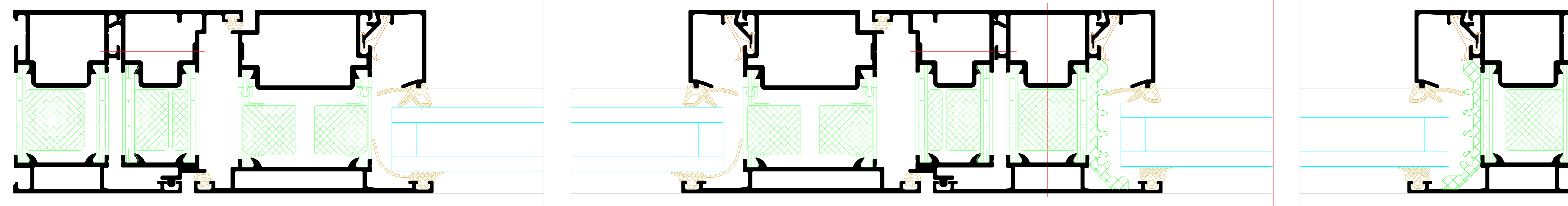


NO.	DATE	REVISION	BY	CHECKED	GROUP
001	2024	01
<p>Riva Elementschelle Riva Unit section details</p> <p>Tür RIVA ADS FS Si Außen öffnend, fächerbündig Door RIVA ADS FS Si outward opening, flush-fitted</p>					
<p>BENEDICT + RIVA BENEDICT + RIVA GmbH Helmholtzstrasse 19 42699 Solingen, Germany</p>					

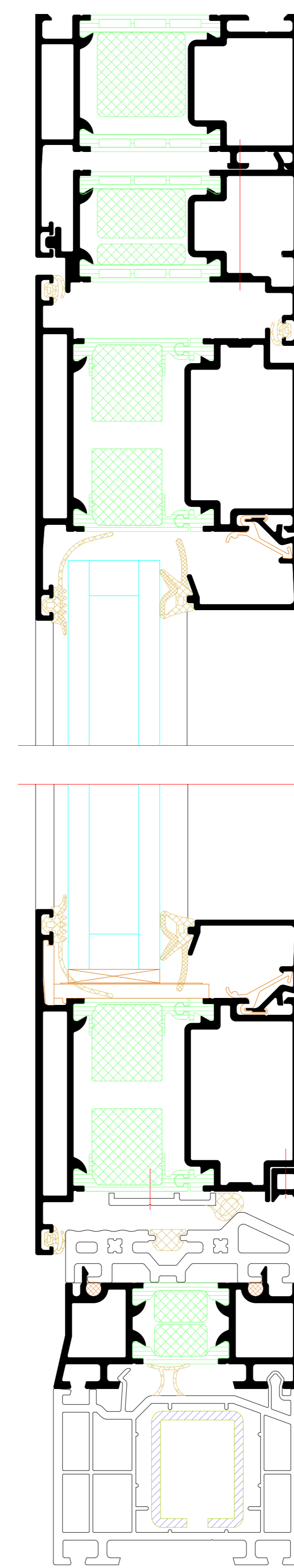
Einflügelige Tür mit Festfeld
 Single-leaf door with fixed light



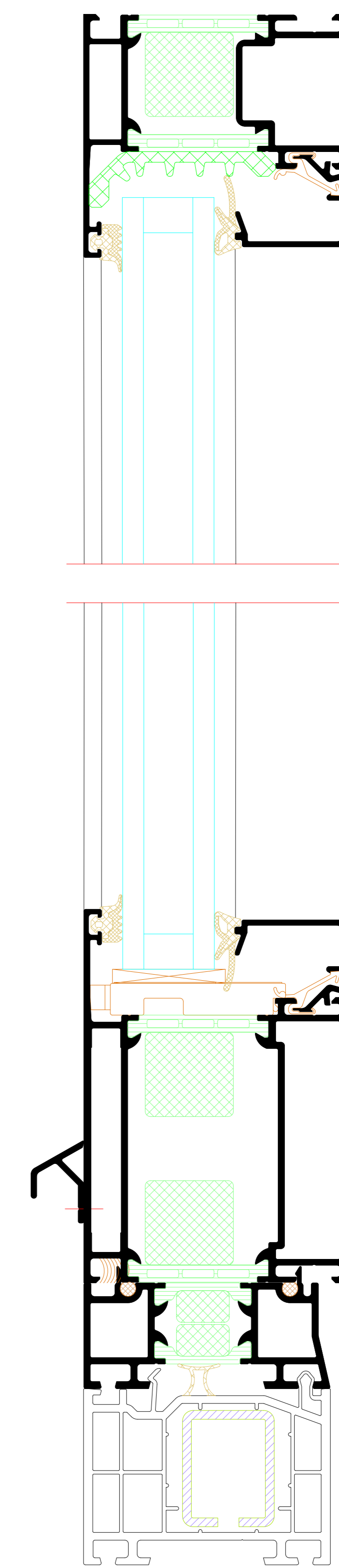
J



F

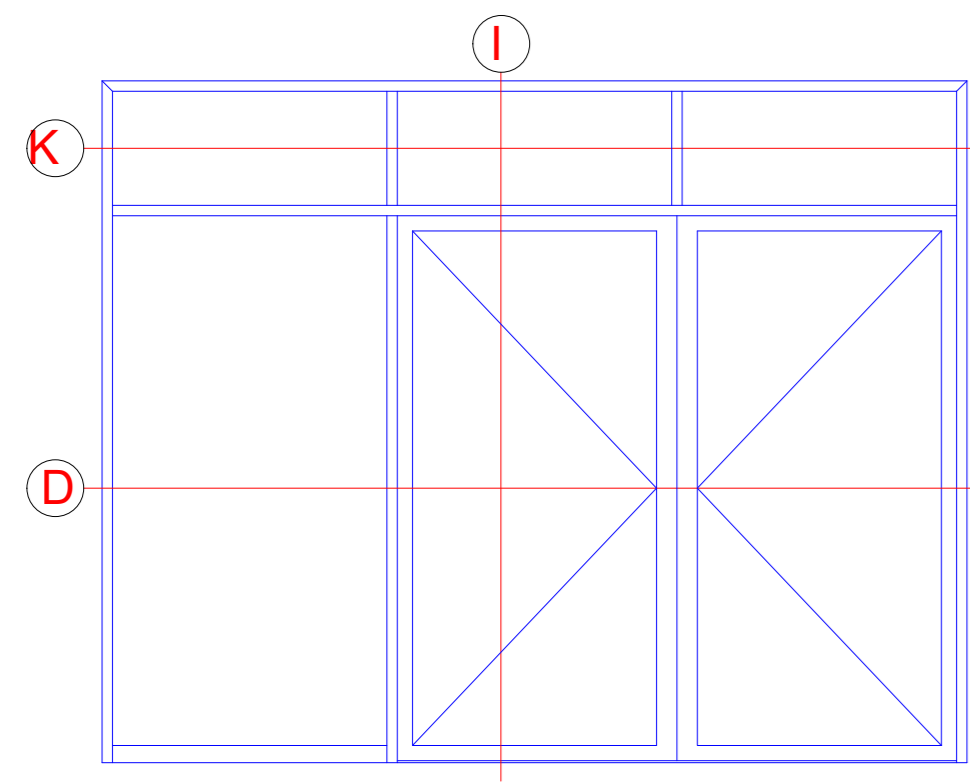


E

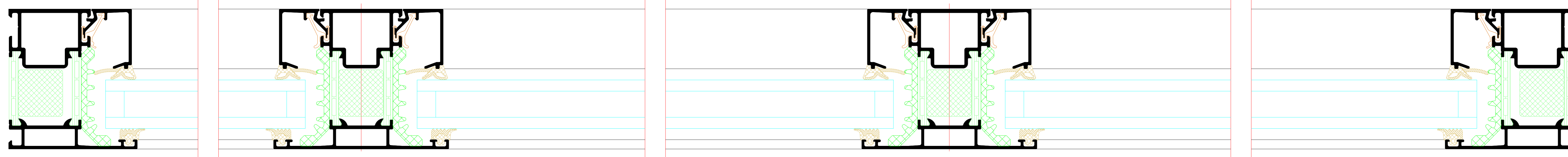


NO.	DATE	REVISION	BY	CHECKED BY
001	2024	01	J. Doe	M. Smith
<p>Project: Riva Elementarchelle Riva Unit section details</p> <p>Client: ABC GmbH Address: Musterstraße 123, 12345 Musterstadt, DE</p> <p>Product: Tür RIVA ADS FS Si Außen öffnend, fächerbündig Door RIVA ADS FS Si outward opening, flush-faced</p>				
<p>Scale: 1:10 Drawing No.: 001</p>				
<p>Legend: - Door frame - Door leaf - Glazing system - Hardware</p>				
<p>Notes: - See technical specifications for material and performance details. - All dimensions are in millimeters unless otherwise specified.</p>				
<p>Manufacturer: BENEDICT + RIVA Address: Musterstraße 123, 12345 Musterstadt, DE Phone: +49 (0) 123 456 789 Email: info@benedict-riva.com</p>				

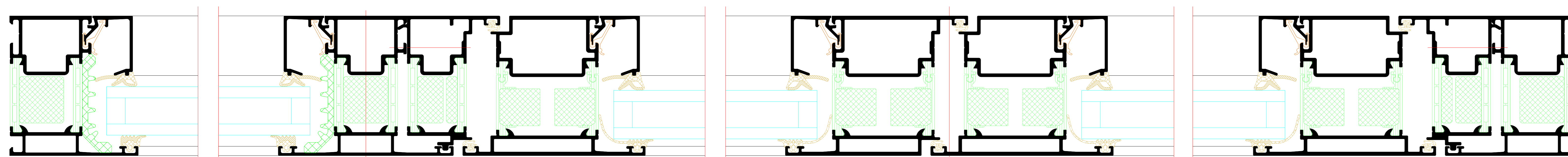
Zweiflügelige Tür mit Festfeld und Oberlicht
 Double-leaf door with fixed light and toplight



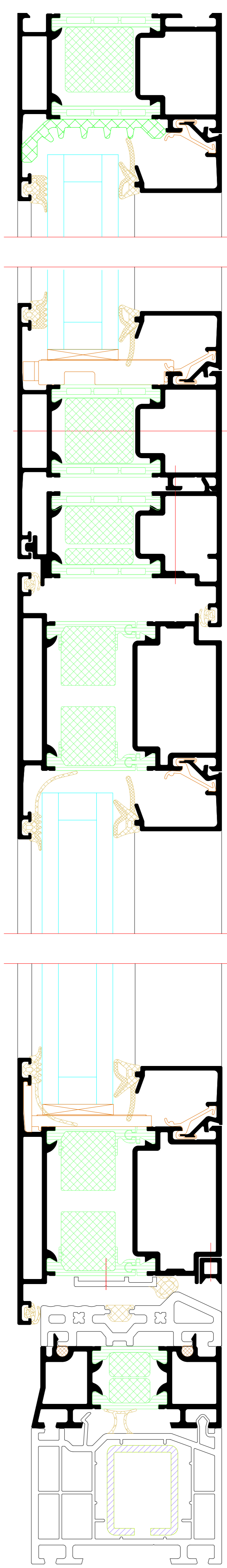
K



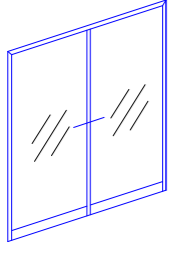
D



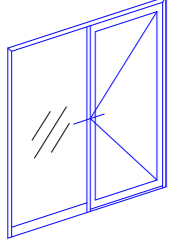
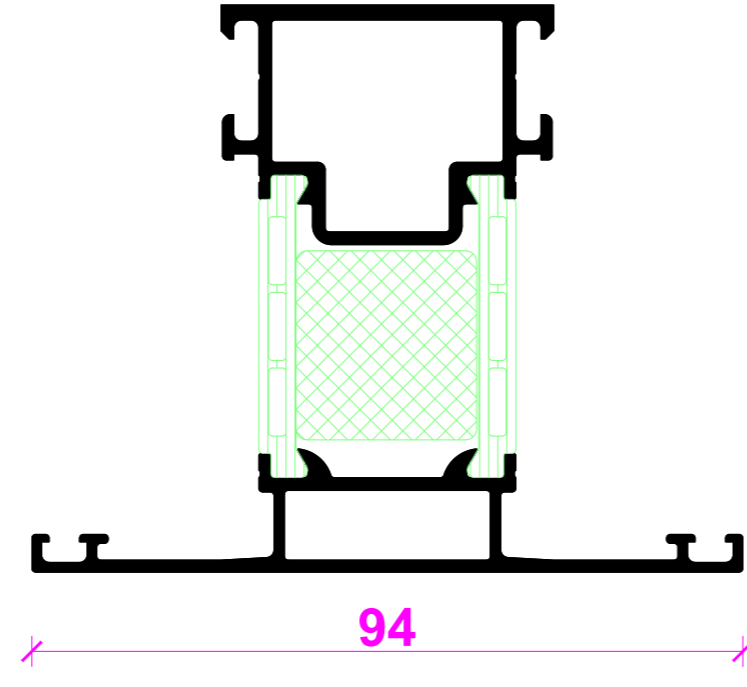
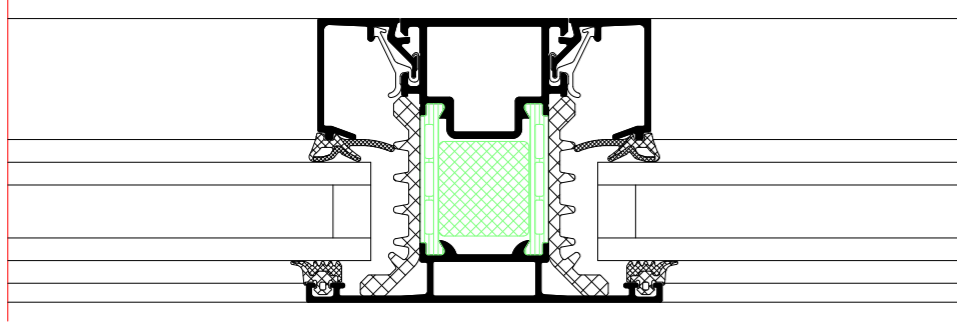
I



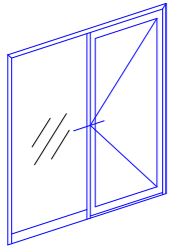
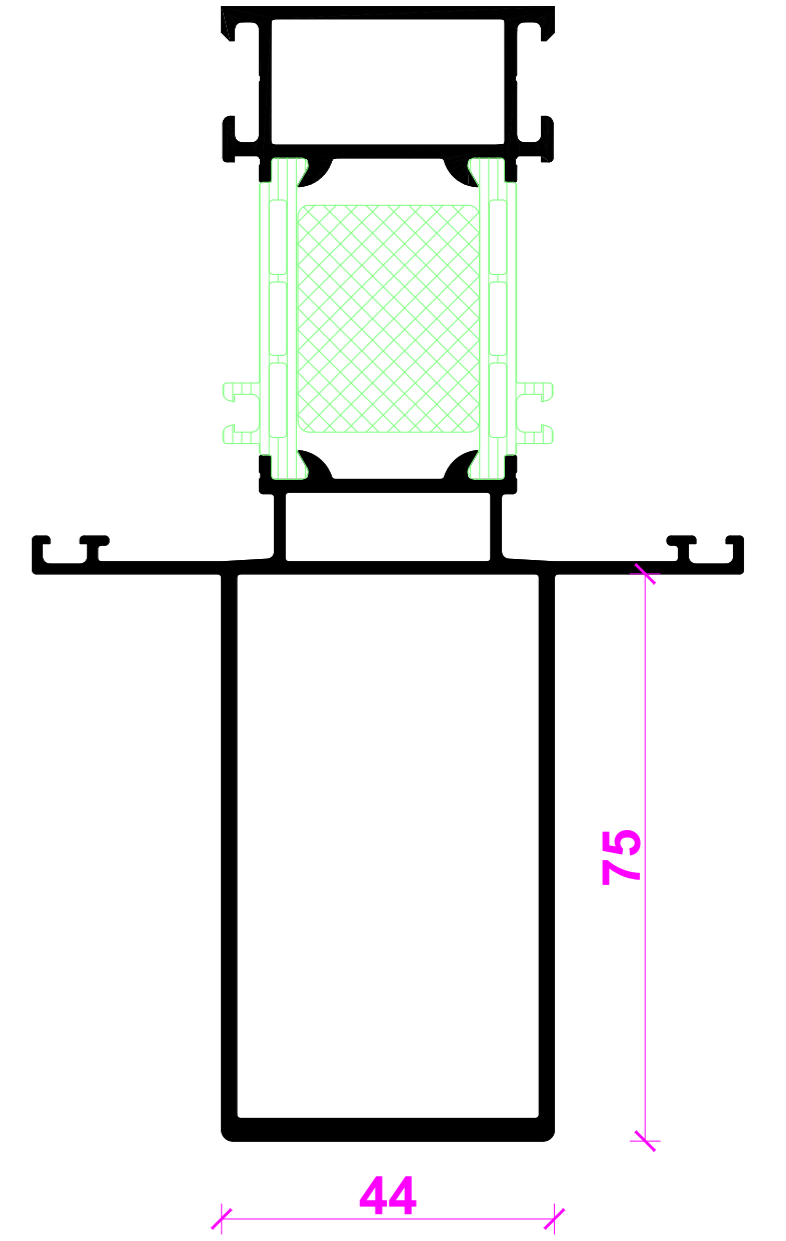
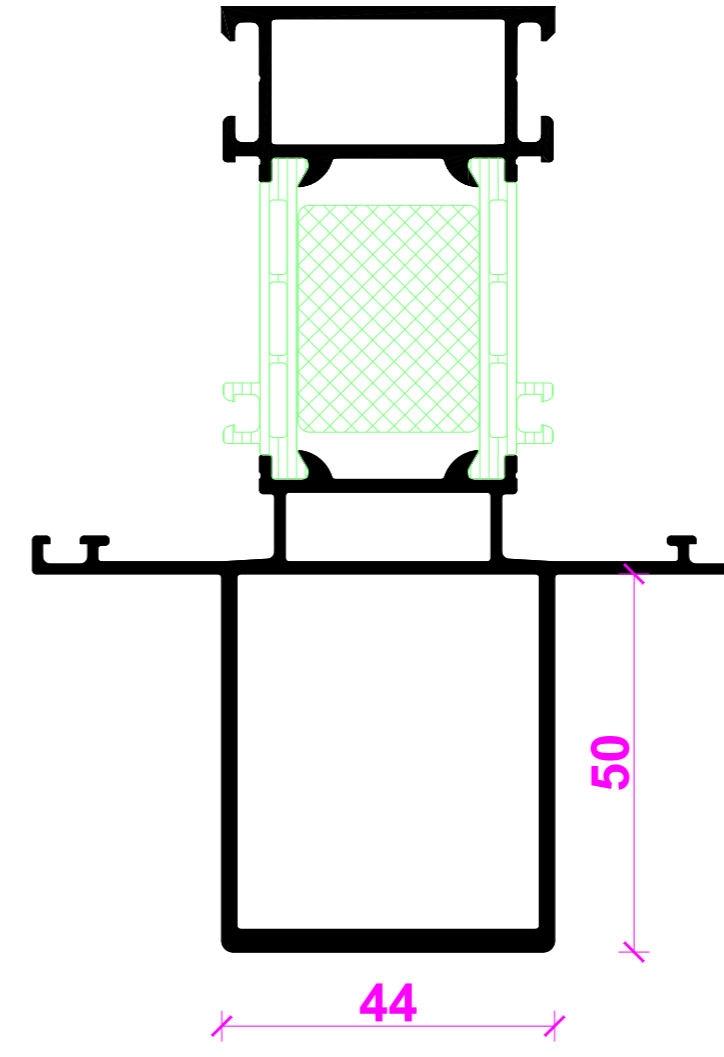
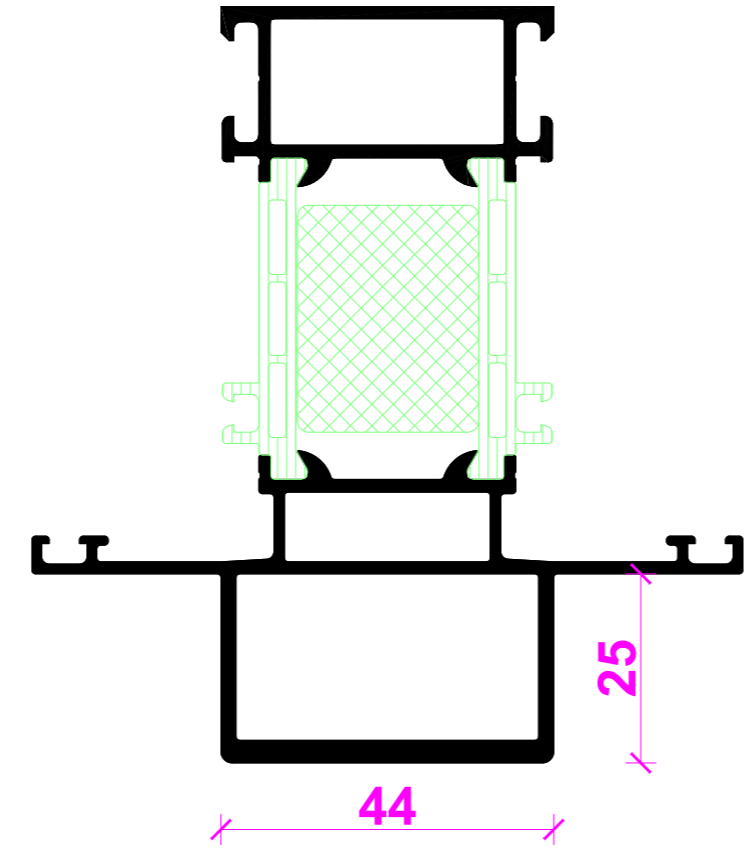
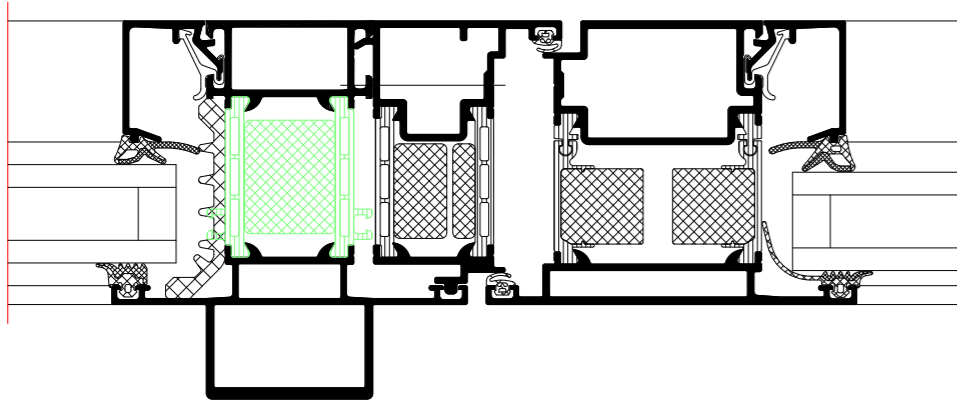
NO.	DATE	REVISION	BY	CHECKED BY
001	01.10.2018	01
002	01.10.2018	02
003	01.10.2018	03
004	01.10.2018	04
005	01.10.2018	05
006	01.10.2018	06
007	01.10.2018	07
008	01.10.2018	08
009	01.10.2018	09
010	01.10.2018	10
011	01.10.2018	11
012	01.10.2018	12
013	01.10.2018	13
014	01.10.2018	14
015	01.10.2018	15
016	01.10.2018	16
017	01.10.2018	17
018	01.10.2018	18
019	01.10.2018	19
020	01.10.2018	20
021	01.10.2018	21
022	01.10.2018	22
023	01.10.2018	23
024	01.10.2018	24
025	01.10.2018	25
026	01.10.2018	26
027	01.10.2018	27
028	01.10.2018	28
029	01.10.2018	29
030	01.10.2018	30
031	01.10.2018	31
032	01.10.2018	32
033	01.10.2018	33
034	01.10.2018	34
035	01.10.2018	35
036	01.10.2018	36
037	01.10.2018	37
038	01.10.2018	38
039	01.10.2018	39
040	01.10.2018	40
041	01.10.2018	41
042	01.10.2018	42
043	01.10.2018	43
044	01.10.2018	44
045	01.10.2018	45
046	01.10.2018	46
047	01.10.2018	47
048	01.10.2018	48
049	01.10.2018	49
050	01.10.2018	50
051	01.10.2018	51
052	01.10.2018	52
053	01.10.2018	53
054	01.10.2018	54
055	01.10.2018	55
056	01.10.2018	56
057	01.10.2018	57
058	01.10.2018	58
059	01.10.2018	59
060	01.10.2018	60
061	01.10.2018	61
062	01.10.2018	62
063	01.10.2018	63
064	01.10.2018	64
065	01.10.2018	65
066	01.10.2018	66
067	01.10.2018	67
068	01.10.2018	68
069	01.10.2018	69
070	01.10.2018	70
071	01.10.2018	71
072	01.10.2018	72
073	01.10.2018	73
074	01.10.2018	74
075	01.10.2018	75
076	01.10.2018	76
077	01.10.2018	77
078	01.10.2018	78
079	01.10.2018	79
080	01.10.2018	80
081	01.10.2018	81
082	01.10.2018	82
083	01.10.2018	83
084	01.10.2018	84
085	01.10.2018	85
086	01.10.2018	86
087	01.10.2018	87
088	01.10.2018	88
089	01.10.2018	89
090	01.10.2018	90
091	01.10.2018	91
092	01.10.2018	92
093	01.10.2018	93
094	01.10.2018	94
095	01.10.2018	95
096	01.10.2018	96
097	01.10.2018	97
098	01.10.2018	98
099	01.10.2018	99
100	01.10.2018	100



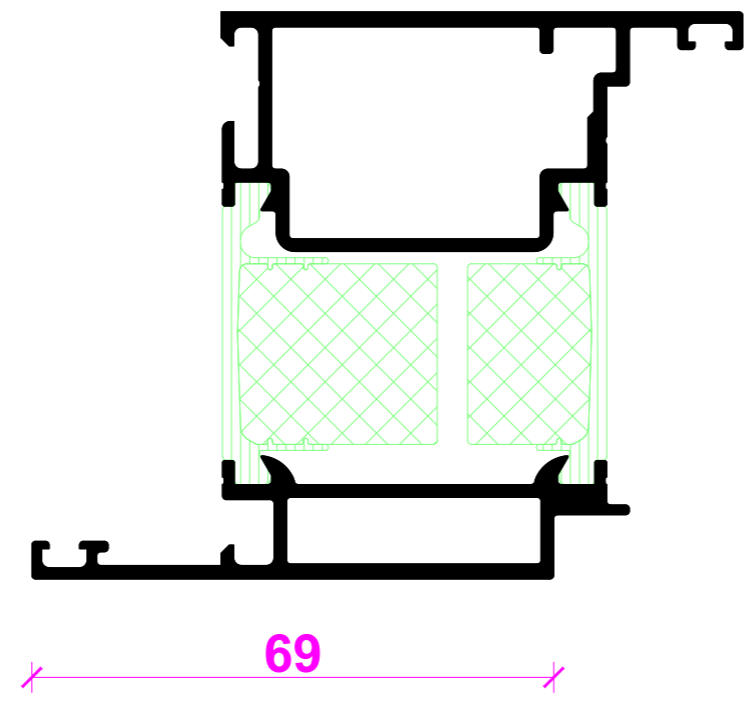
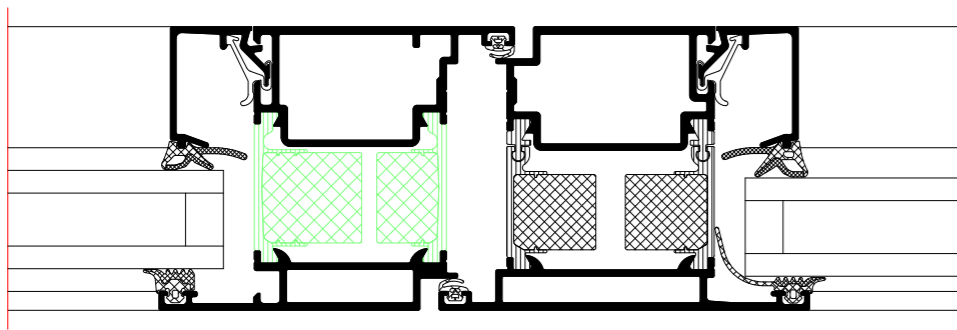
Riegel/Pfosten
Transom/mullion



Statikpfosten
Structural mullion

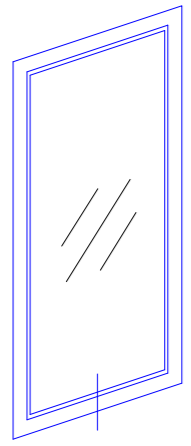


Türpfosten
Door mullion

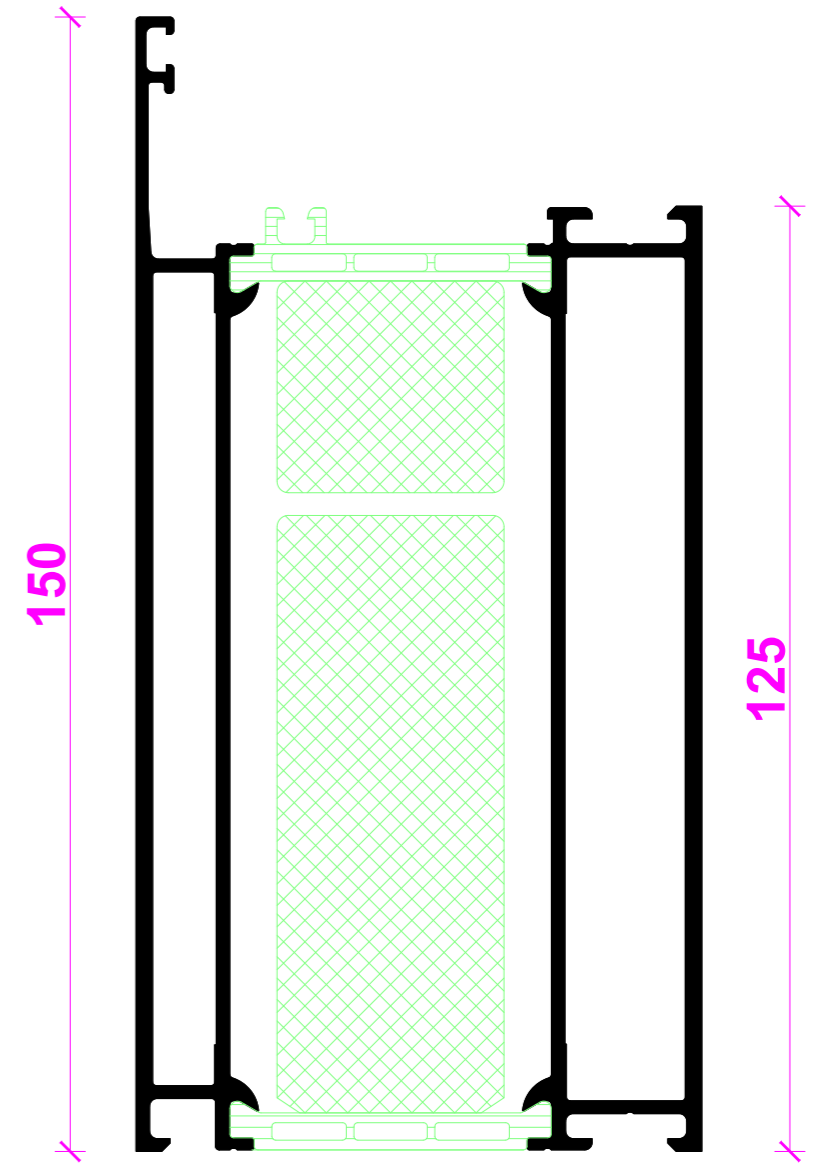
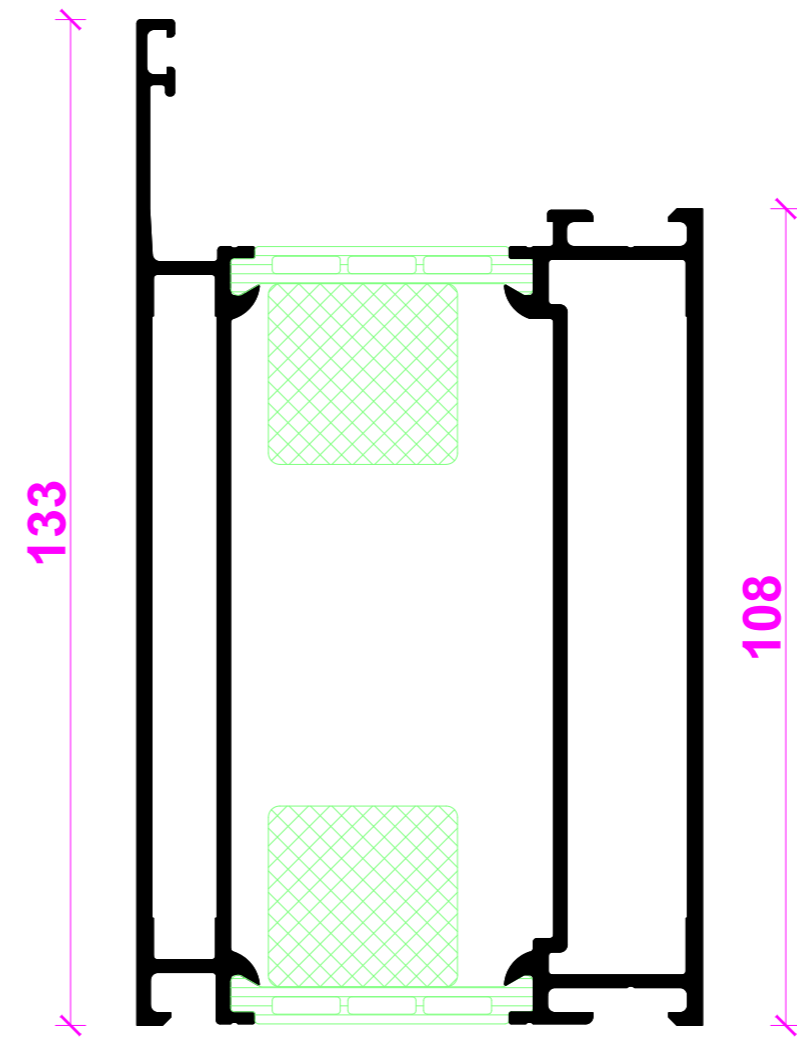
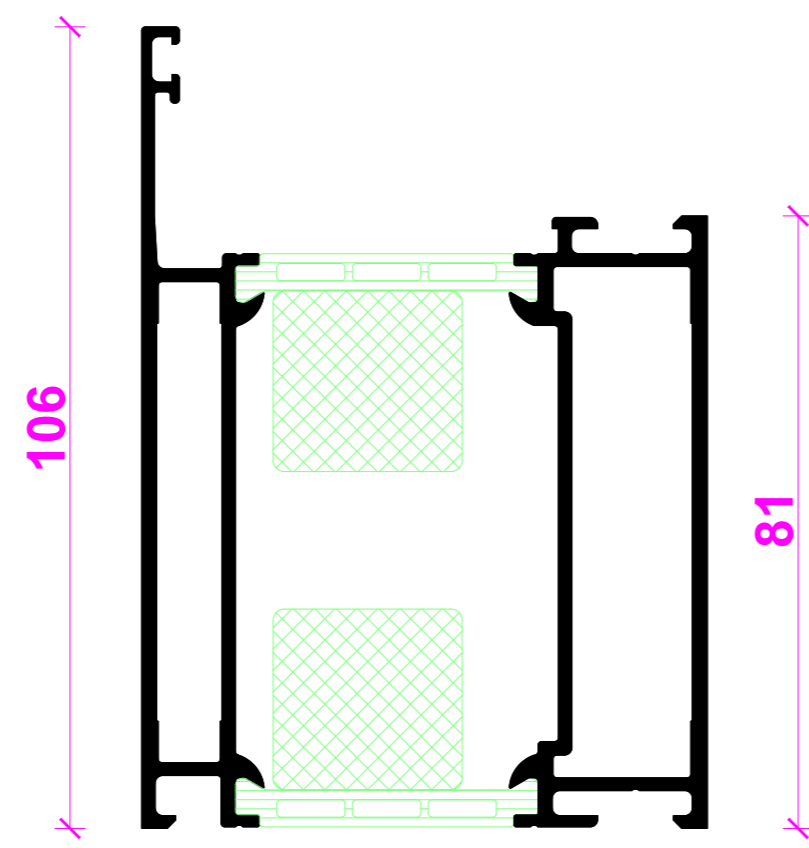
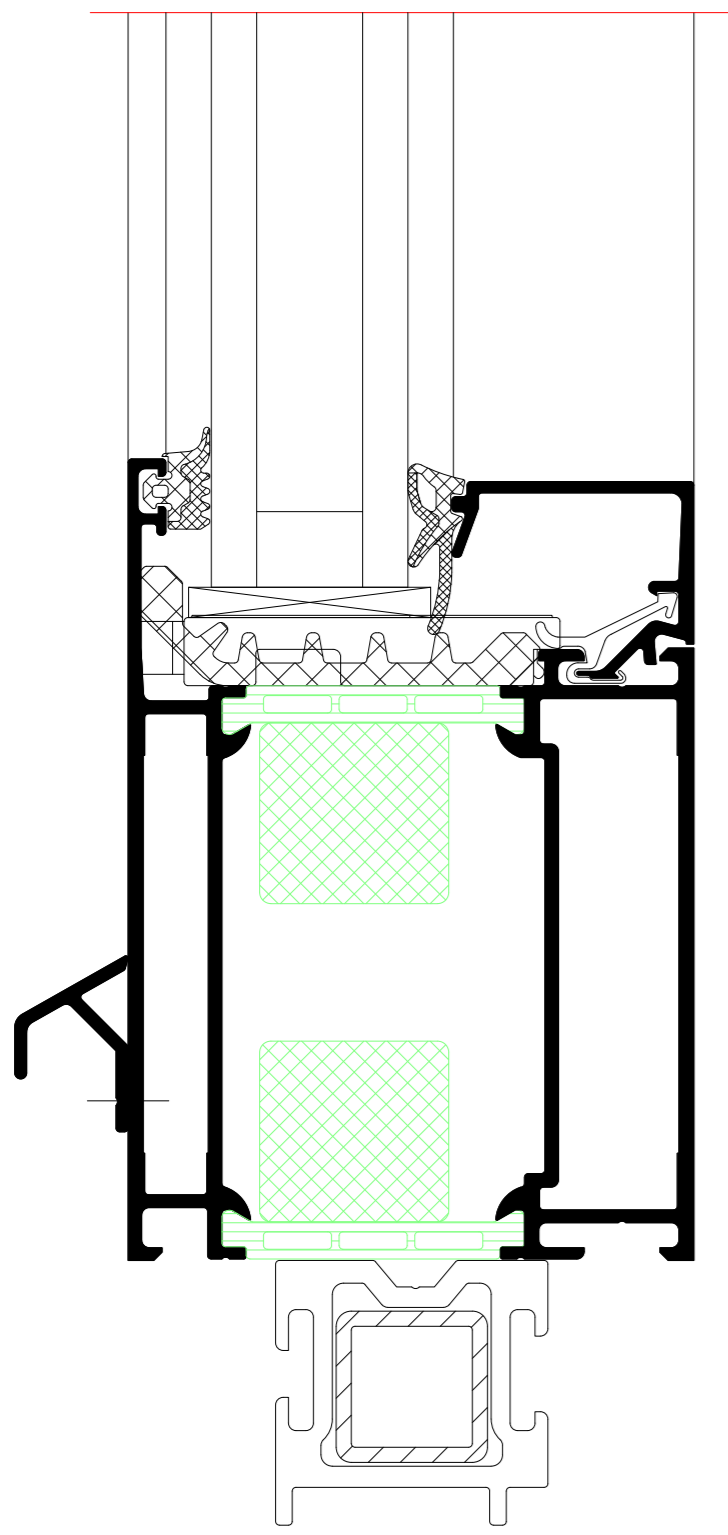


INDEX	DATUM	ÄNDERUNG	GEZEICHNET	GEPRÜFT
INDEX	DATE	CHANGE	DESIGNED BY	CHECKED BY
PLANNUMMER				
PLAN DATE				
Riva Profilsysteme				
Riva Profile systems				
PROJEKT			PROJEKT NR.	
PROJECT			PROJECT NO.	
Tür RIVA ADS 75 SI Außen öffnend, flächenbündig				
Door RIVA ADS 75 SI outward opening, flush-fitted				
AUßERER				
CLIENT				
PLANNERS				
PLANNER				
BENEDICT + RIVA			BENEDICT + RIVA GmbH	
			Rödelstrasse 13	
			04320 Leipzig, Germany	
ANSCHREIBPARTNER		STÄUHLER ANSTÄUHLER		
CONTACT PERSON		STÄUHLER ANSTÄUHLER		
PLANNING TYPE	STATUS	PLANNING TYPE	SCALE	DESIGNED BY
	STATUS	FORMAL		CHECKED BY
	DRAWN		1:20	W.A.
PLANNUMMER				
DOCUMENT NUMBER				

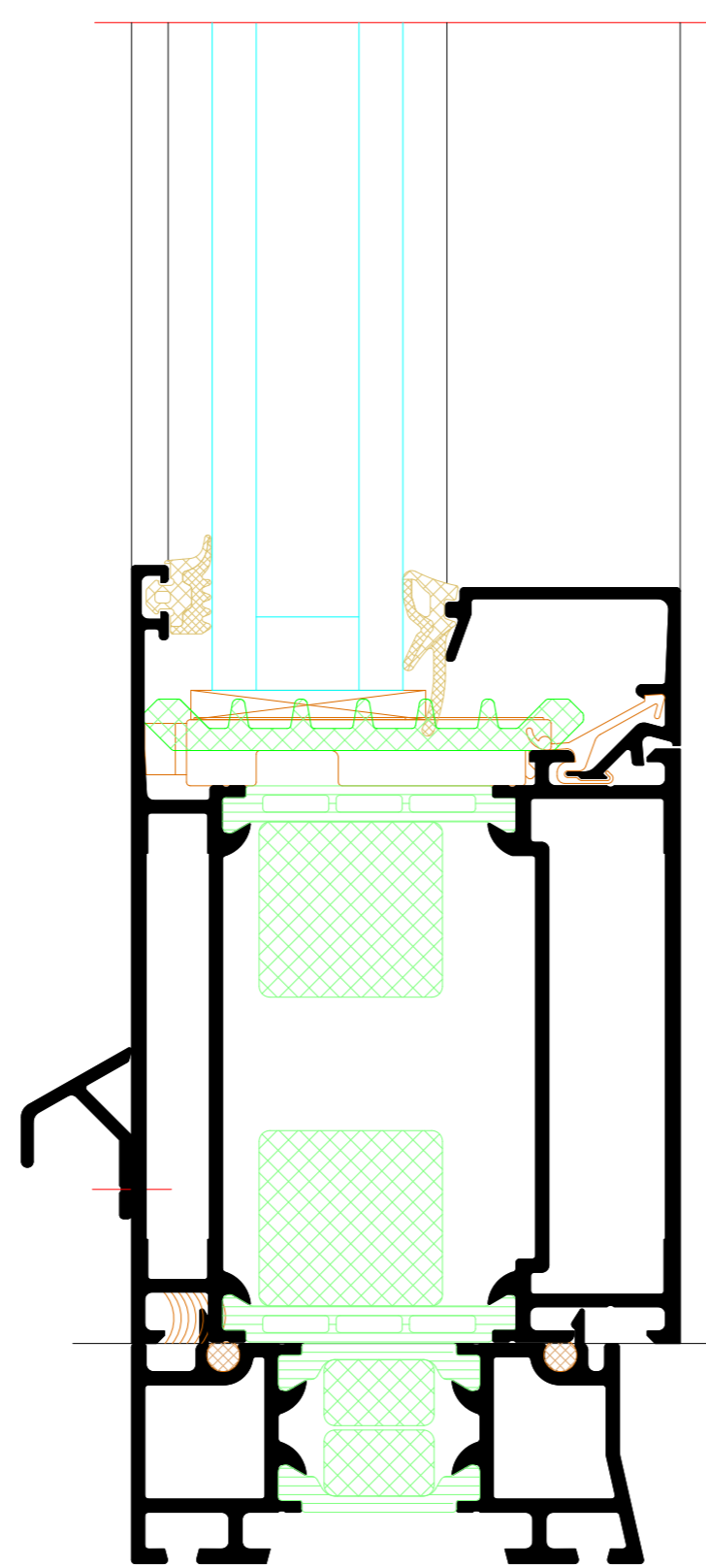
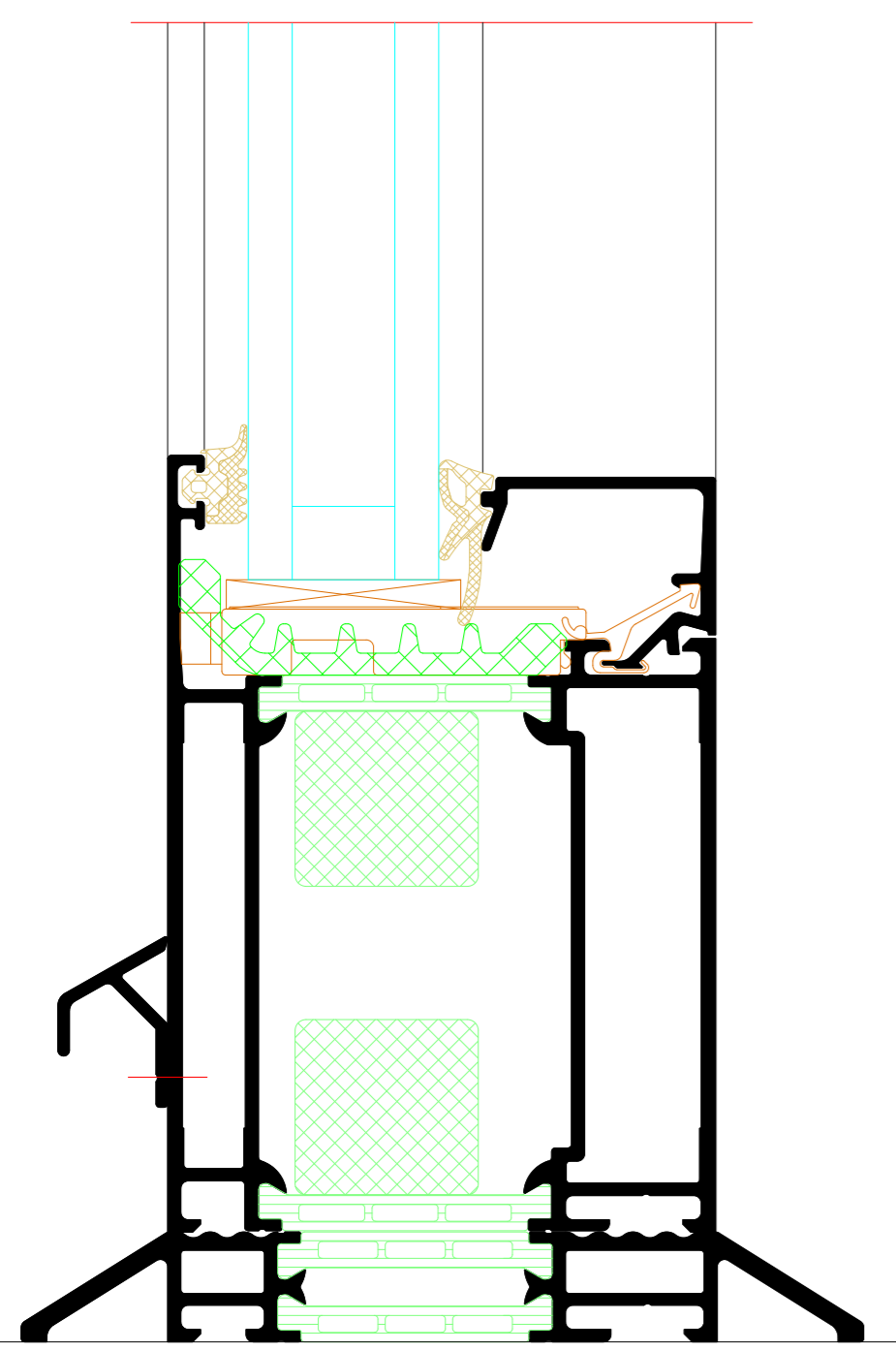
Sockel Festfeld
Sill, fixed light



Profile
Profiles

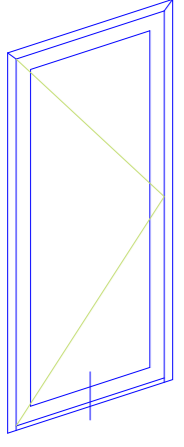


Varianten
Options

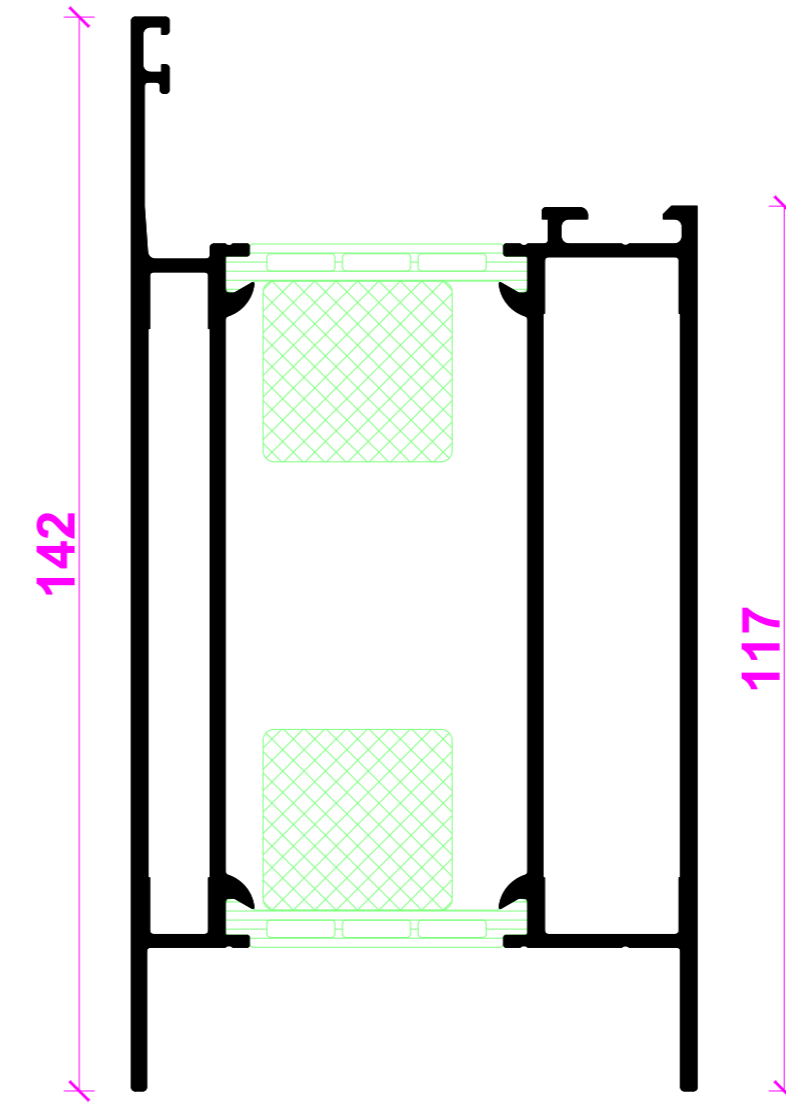
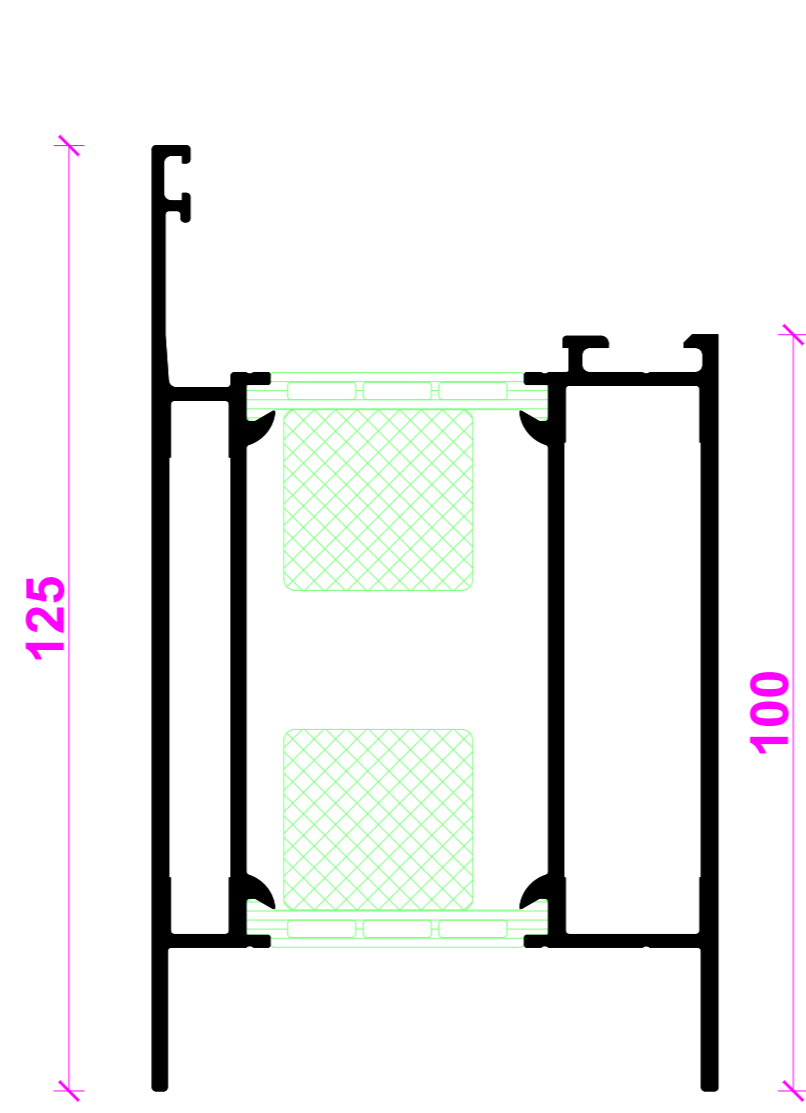
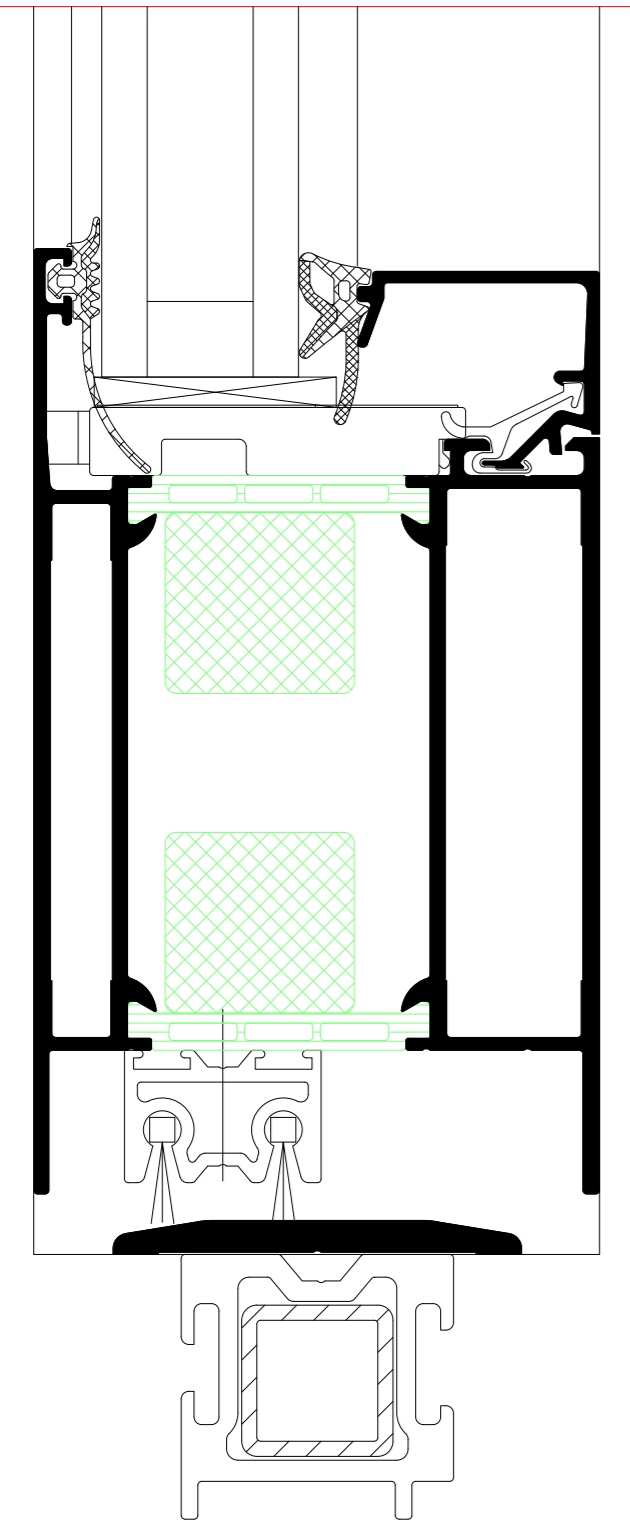


INDEX	DATE	ANDE- RUNG	GEZEICH- NET	GEPRÜFT
INDEX	DATE	CHANGE	DESIGNED BY	CHECKED BY
PLANNUMMER				
PLAN CONTINUE				
Riva Profilsysteme				
Riva Profile systems				
PROJEKT	Tür RIVA ADS 75 SI Außen öffnend, flächenbündig			PROJEKT NR.
PROJEKT	Door RIVA ADS 75 SI outward opening, flush-fitted			PROJECT NO.
MAßSTAB	CLIENT			
CLIENT				
PLANNUMMER	PLANNER			
PLANNER				
BENEDICT + RIVA				
BENEDICT + RIVA GmbH				
Röckelstrasse 13				
04229 Leipzig, Germany				
PLANNUMMER	STATUS	PLANNUMMER	MAßSTAB	GEZEICH- NET
PLANNUMMER	STATUS	DESIGNED BY	SCALE	DESIGNED BY
DOCUMENT NUMBER	STATUS	DATE	SCALE	CHECKED BY

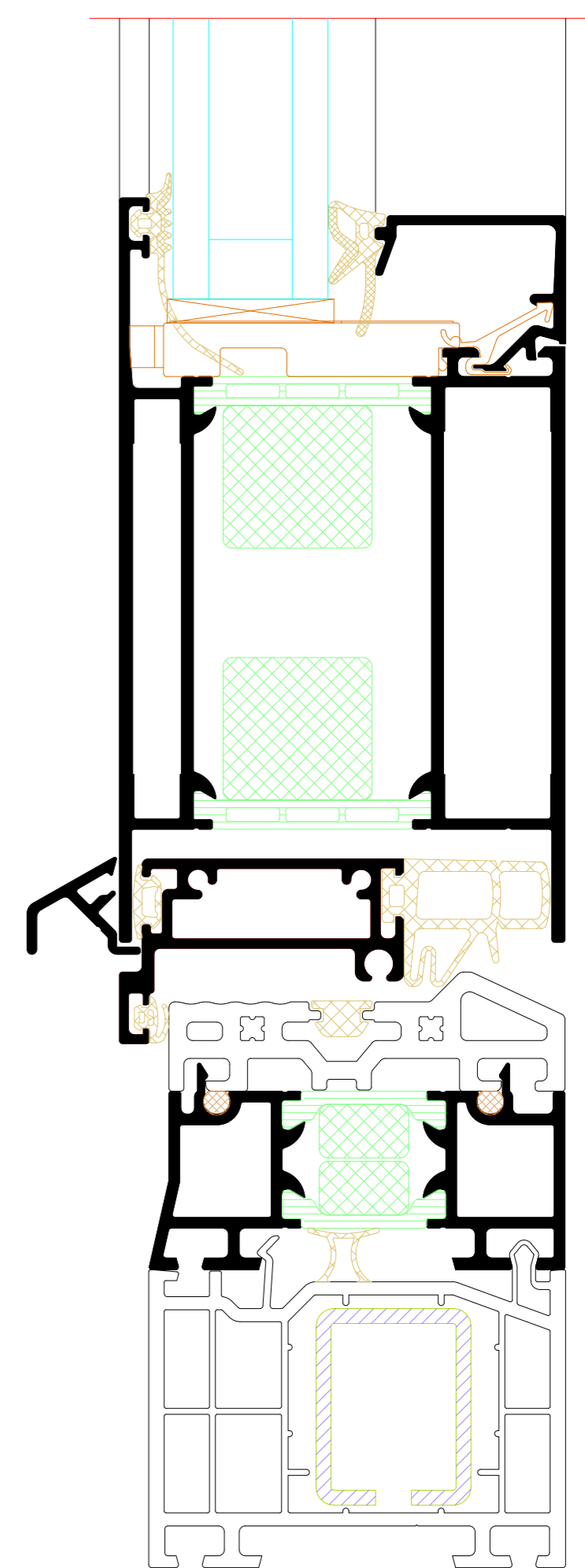
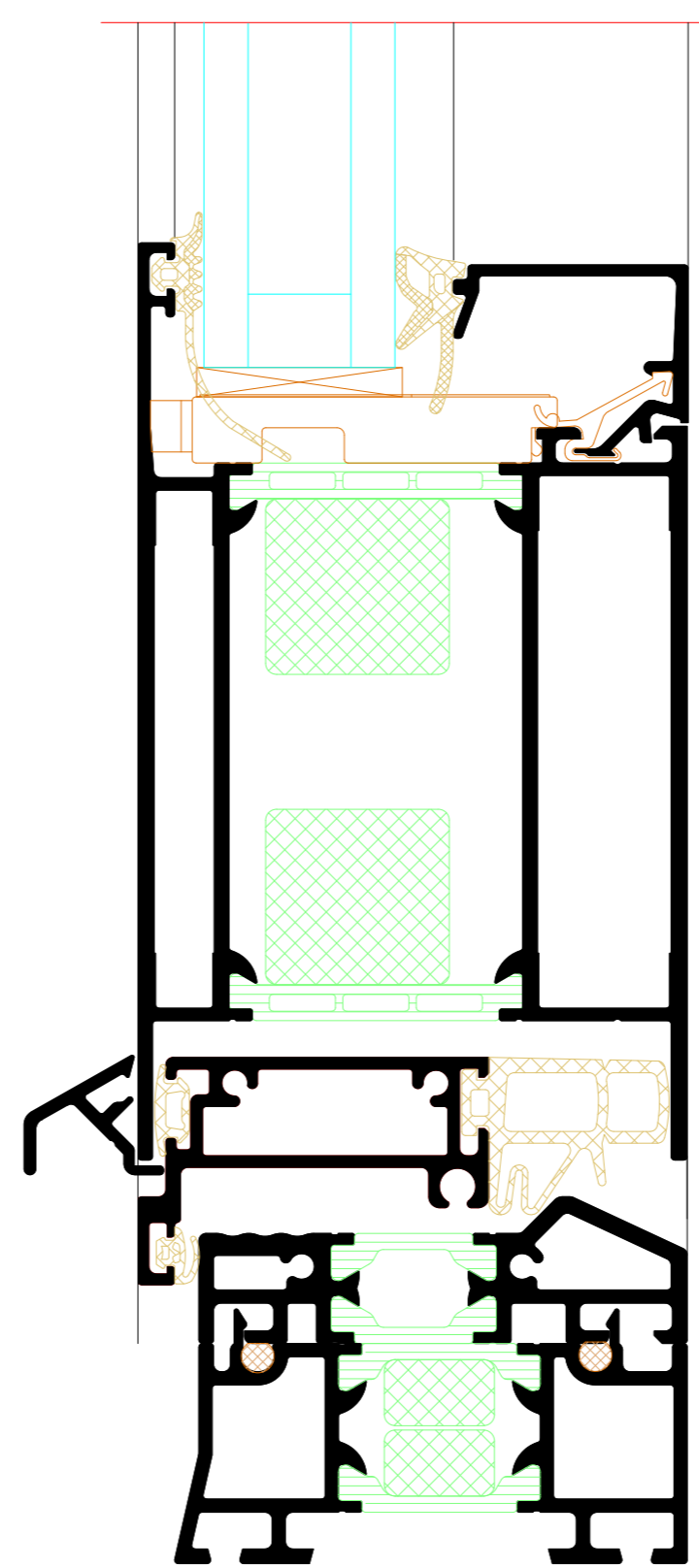
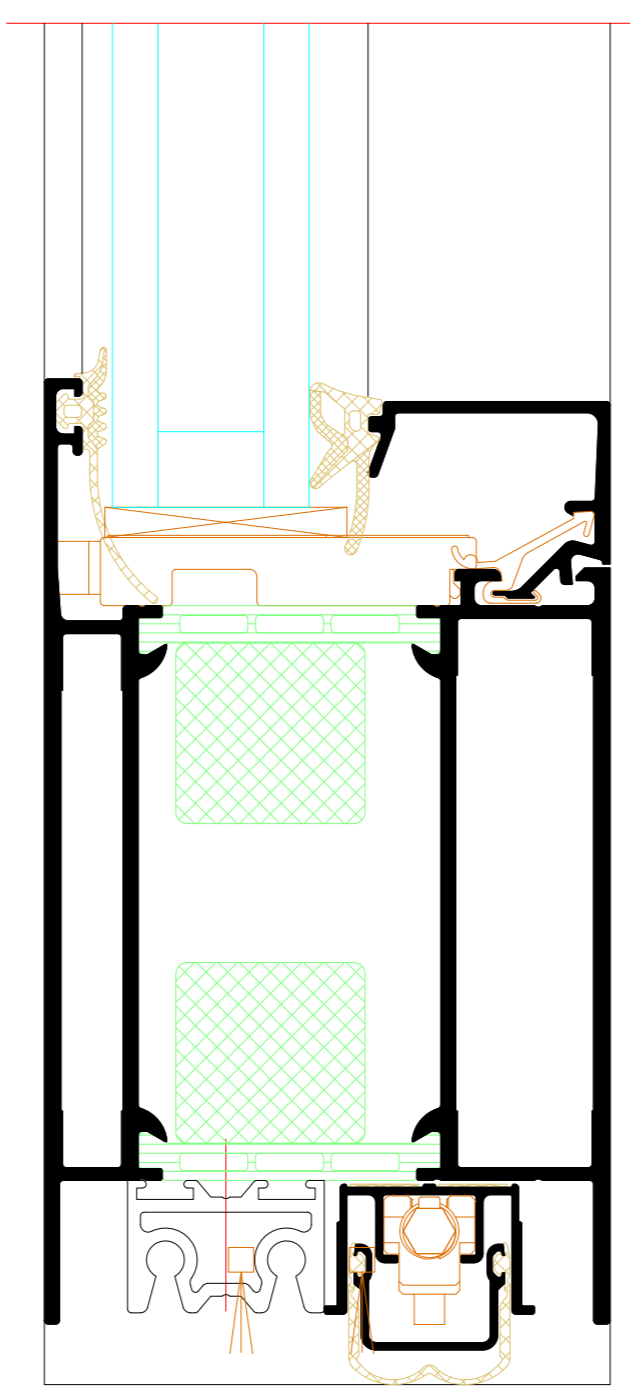
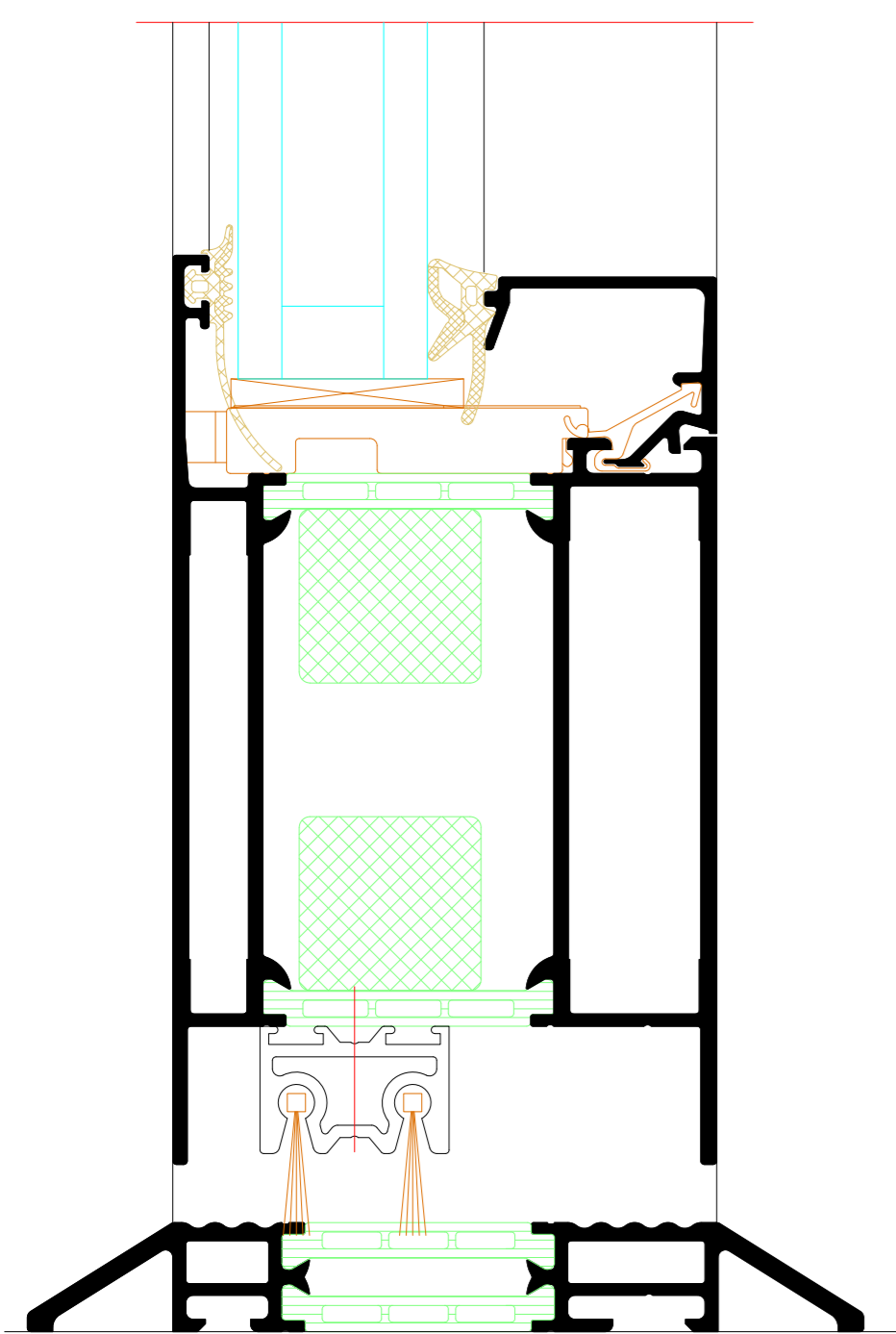
Sockel Öffnungselement
Sill, opening unit



Profile
Profiles



Varianten
Options



INDEX	DATE	ÄNDERUNG	GEZEICHNET	GEPRÜFT
NO. /	DATE	CHANGE	DESIGNED BY	CHECKED BY
PLANNRVT PLAN-CONTENT				DATE
PROJECT PROJECT				
Riva Profilsysteme Riva Profile systems				
Tür RIVA ADS 75 SI Außen öffnend, flächenbündig Door RIVA ADS 75 SI outward opening, flush-fitted				
KUNDE CLIENT				
PLANNUMMER PLANNER				
BENEDICT + RIVA				
BENEDICT + RIVA GmbH Röselstrasse 13 04229 Leipzig, Germany				
ANSPRECHPARTNER CONTACT PERSON	MATHIAS ANSCHUTZ			
PLANNUMMER PLANNING TYPE	STATUS	PLANNUMMER FORMAT	MAßSTAB SCALE	GEZEICHNET DESIGNED BY
				GEPRÜFT CHECKED BY
PLANNUMMER DOCUMENT NUMBER				

