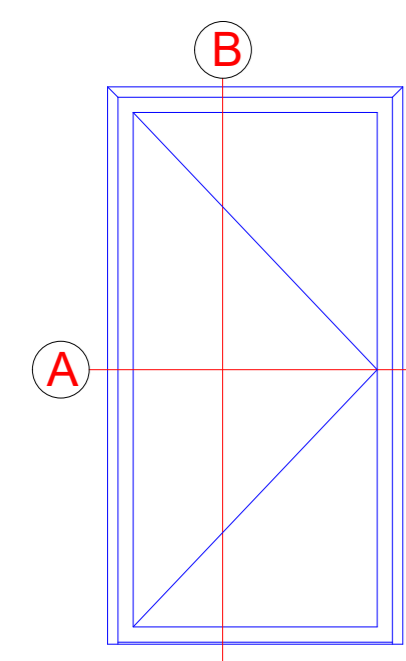




Einfügelige Tür  
Single-leaf door

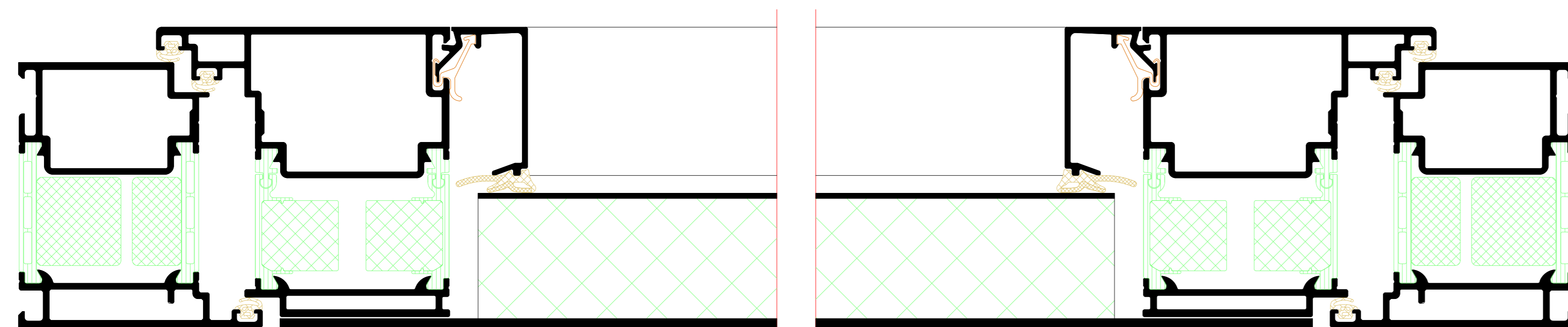


A

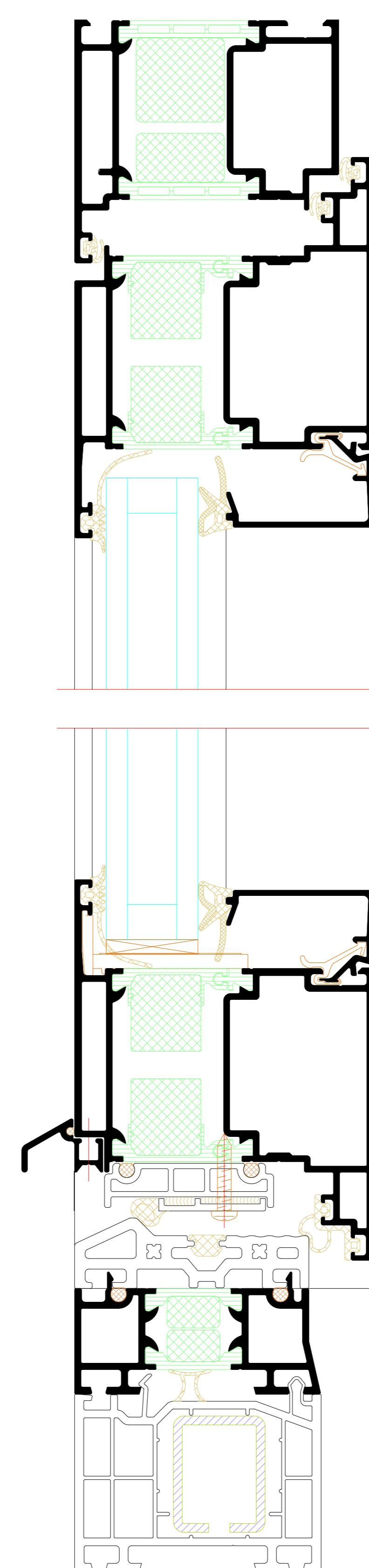


A

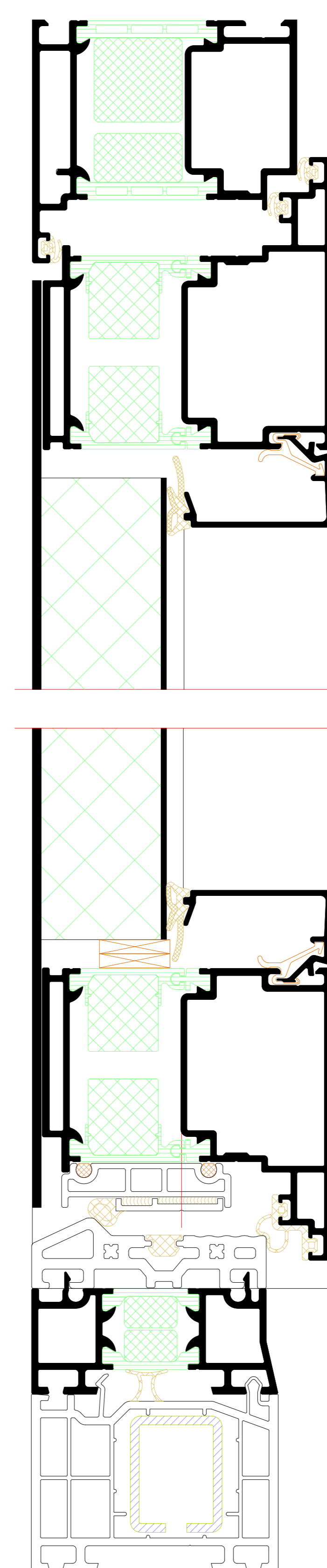
Flügelüberdeckend einseitig  
Leaf-enclosing on one side



B

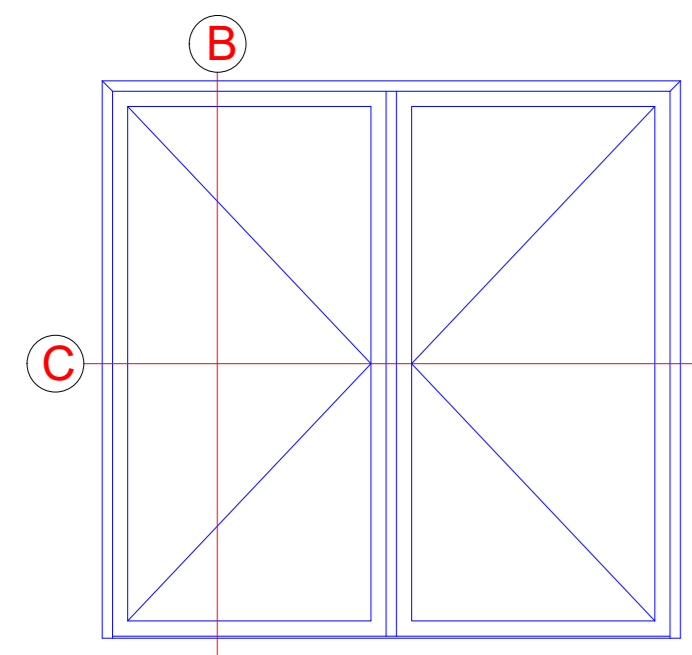


B

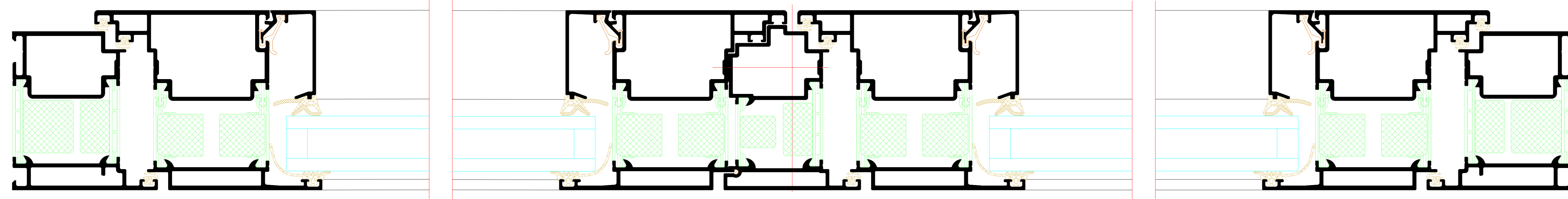


Flügelüberdeckend einseitig  
Leaf-enclosing on one side

Zweiflügelige Tür  
Double-leaf door

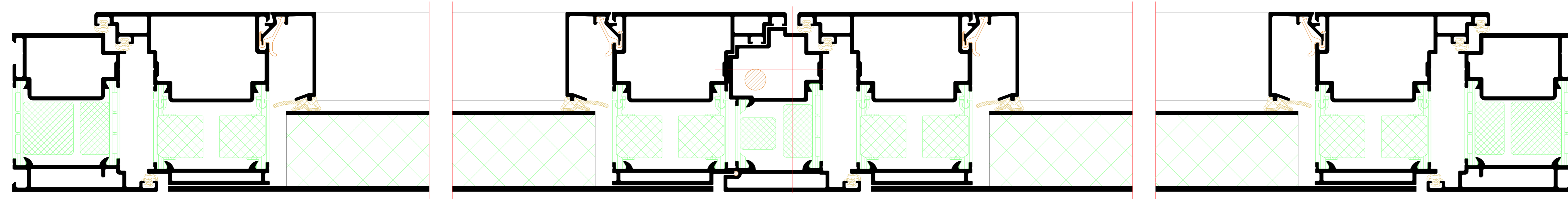


C



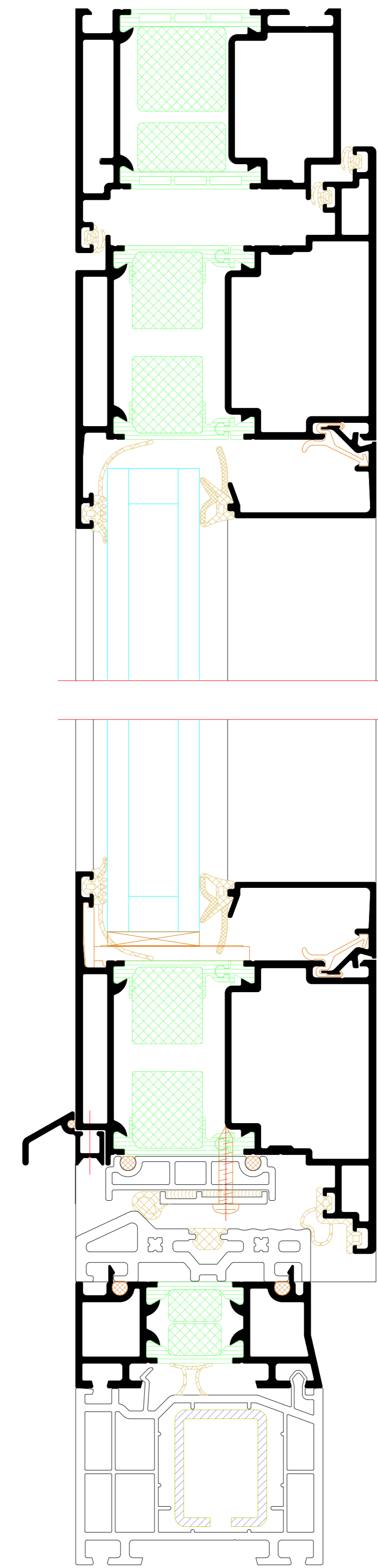
C

Flügelüberdeckend einseitig  
Leaf-enclosing on one side

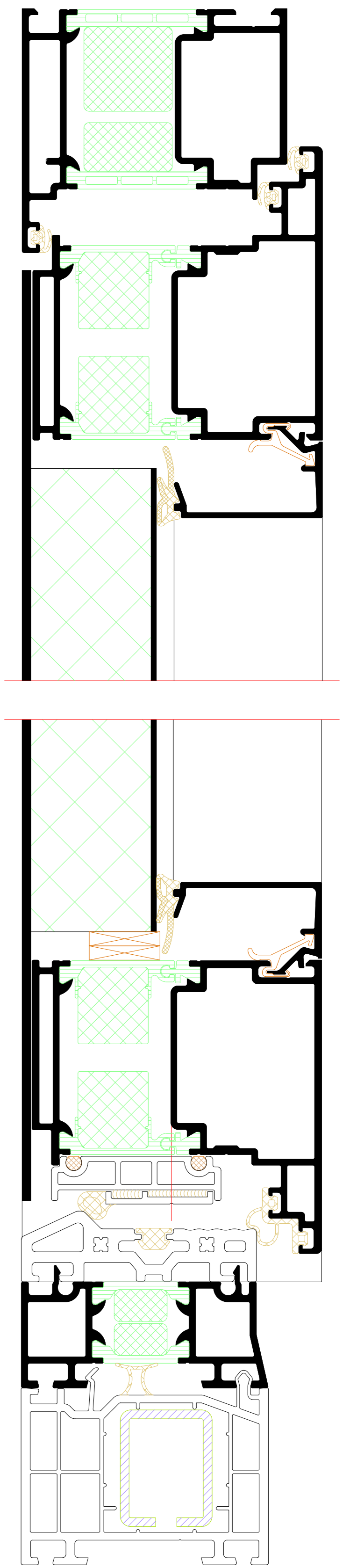


Flügelüberdeckend einseitig  
Leaf-enclosing on one side

B

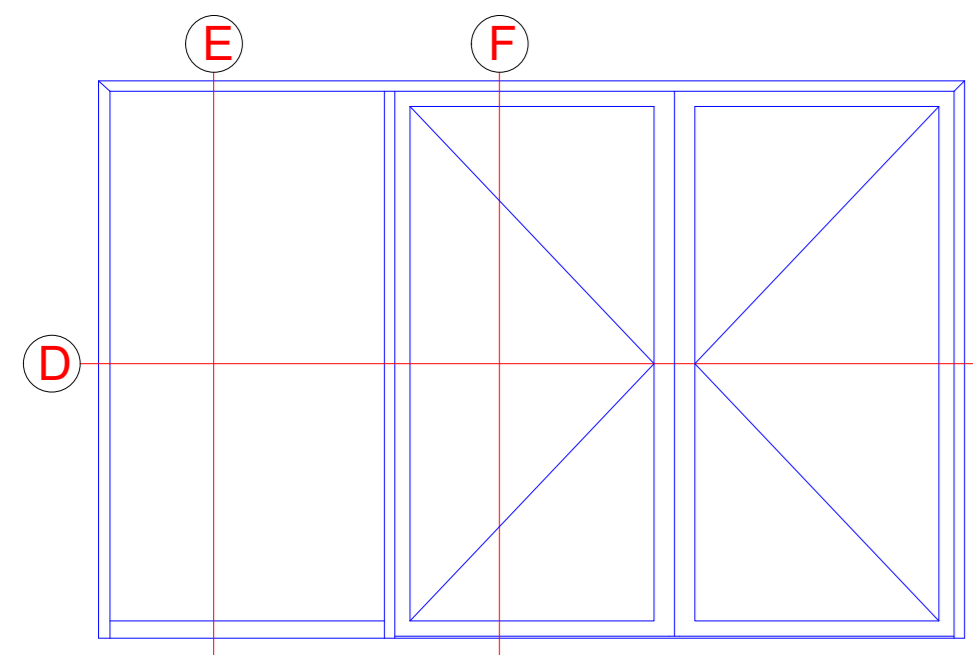


B

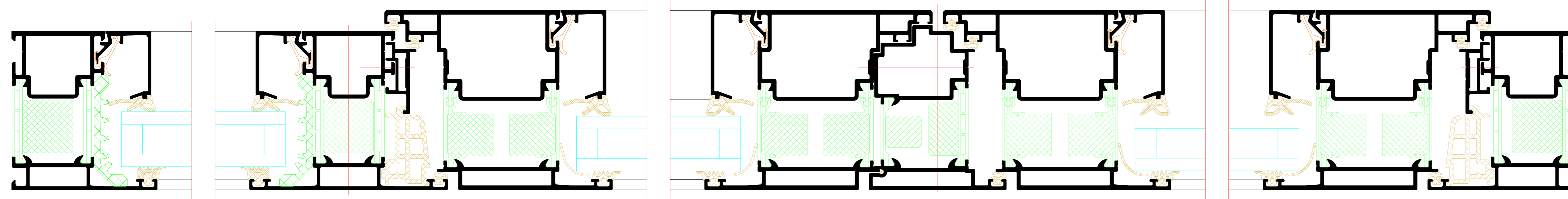


| NO.   | DATE | REVISION | BY  | CHECKED | GROUP |
|---|------|----------|---|---------|-------|
| 01  | 2024 | 01       | ...   | ...     | ...   |
| <p>Riva Elementbuchreihe<br/>Riva Unit section details</p> <p>Projekt:<br/>Tür RIVA ADS FS SI innen Öffend, aufschlagend<br/>Door RIVA ADS FS SI inward opening, leaf-filled</p> <p>Architekt:<br/>BENEDICT + RIVA</p> <p>Standort:<br/>...</p> |      |          |   |         |       |
| <p>BENEDICT + RIVA</p>  |      |          | <p>BENEDICT + RIVA GmbH<br/>Helmholtzstrasse 19<br/>42699 Solingen, Germany</p> |         |       |

Zweiflügelige Tür mit Festfeld  
 Double-leaf door with fixed light

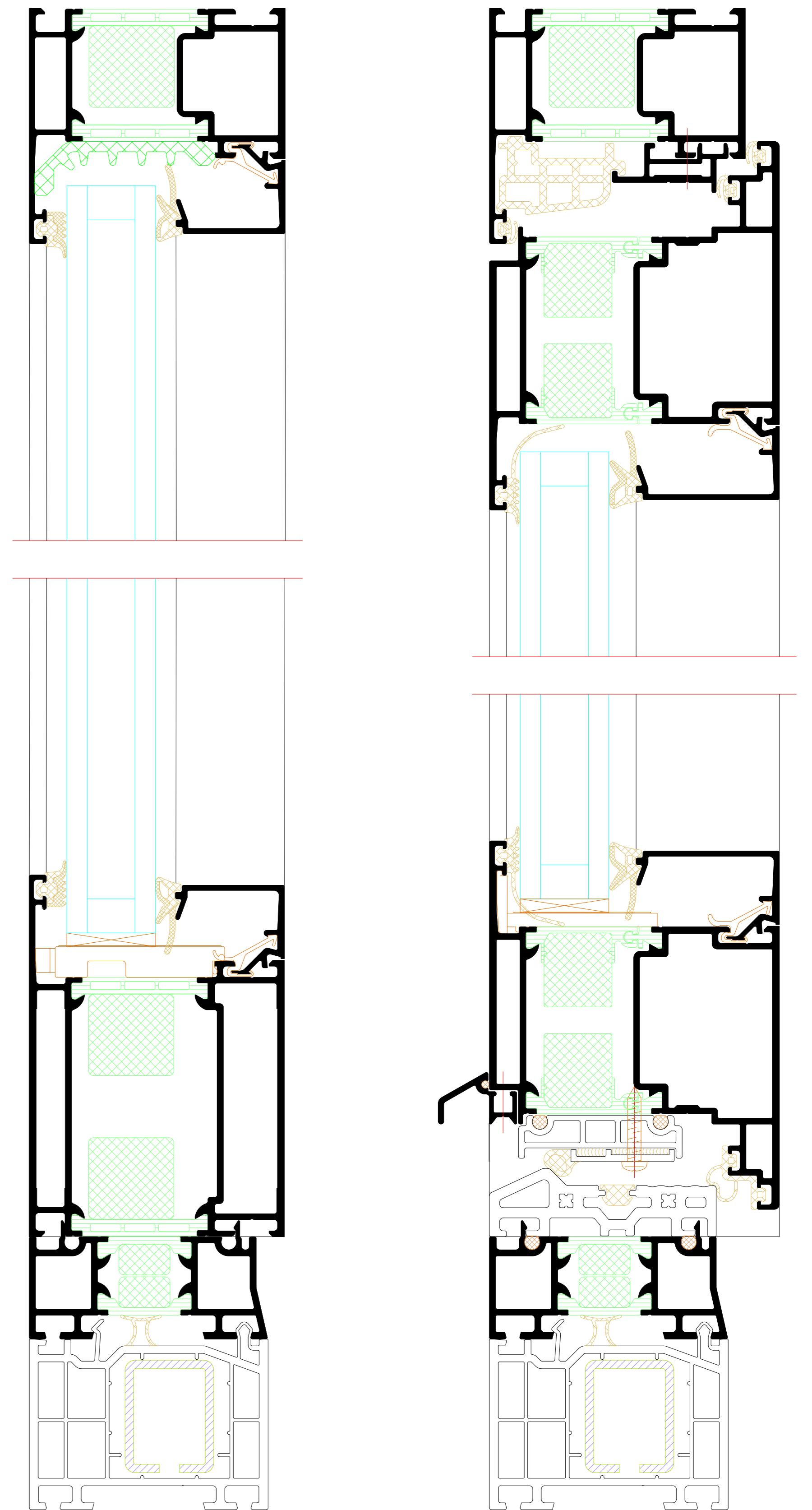


D



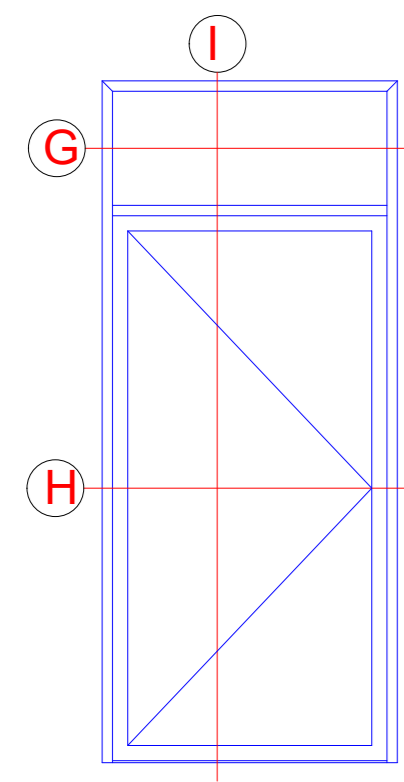
E

F

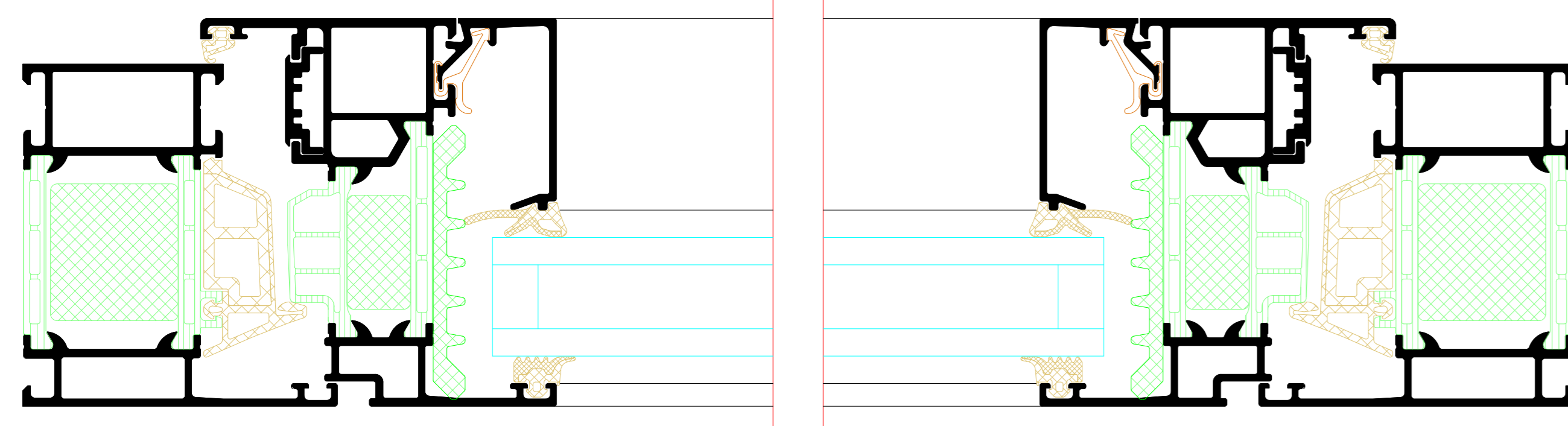


| NO.   | DATE       | ISSUED | REVISION | BY | CHKD |
|---|------------|--------|----------|----|------|
| 001   | 01.10.2023 | 01     |          |    |      |
| <p>Riva Elementarchelle<br/>           Riva Unit section details</p> <p>Projekt<br/>           Tür RIVA ADS FS Si Innen Öffend, aufschlagend<br/>           Door RIVA ADS FS Si inward opening, fixed-leaf</p> <p>Architekt<br/>           BUNDESBANK</p> <p>Architekturbüro<br/>           BENEDICT + RIVA</p> <p>Architekt<br/>           BENEDICT + RIVA GmbH<br/>           Hauptstrasse 15<br/>           6850 Lupatzen, Germany</p> |            |        |          |    |      |
| 002   | 01.10.2023 | 02     |          |    |      |
| 003   | 01.10.2023 | 03     |          |    |      |
| 004   | 01.10.2023 | 04     |          |    |      |
| 005   | 01.10.2023 | 05     |          |    |      |
| 006   | 01.10.2023 | 06     |          |    |      |
| 007   | 01.10.2023 | 07     |          |    |      |
| 008   | 01.10.2023 | 08     |          |    |      |
| 009   | 01.10.2023 | 09     |          |    |      |
| 010   | 01.10.2023 | 10     |          |    |      |

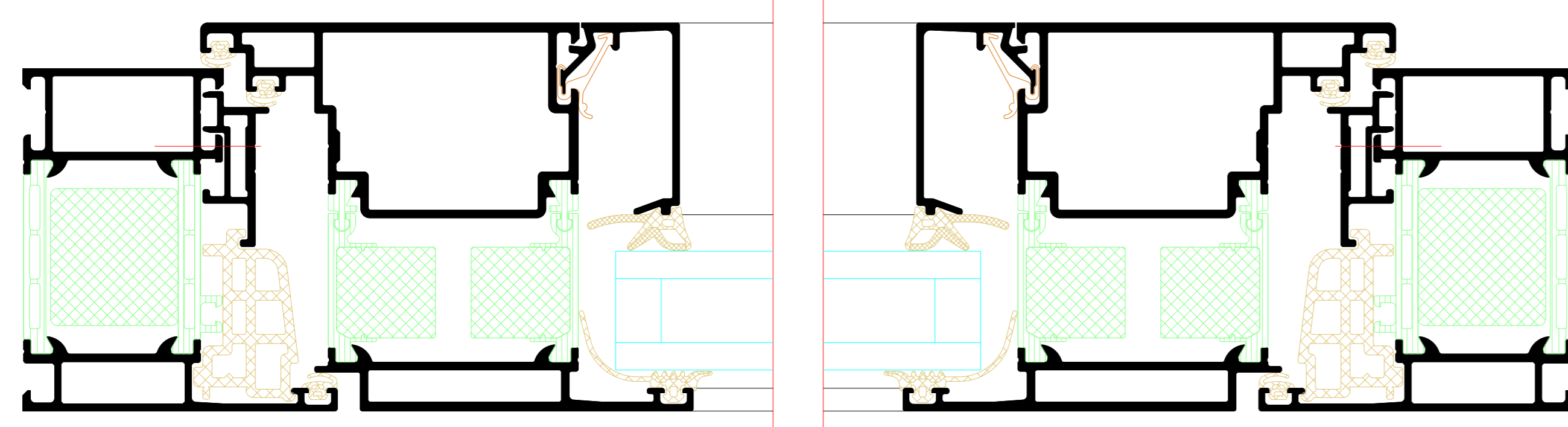
Einfügelige Tür mit Oberlicht  
Single-leaf door with toplight



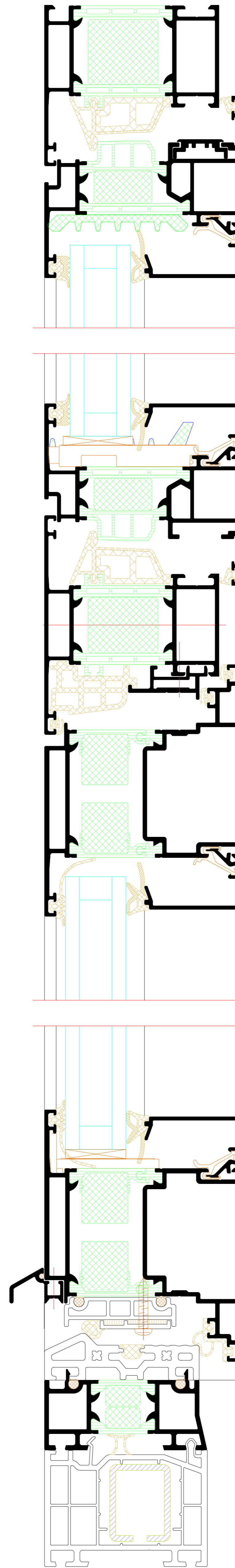
G



H

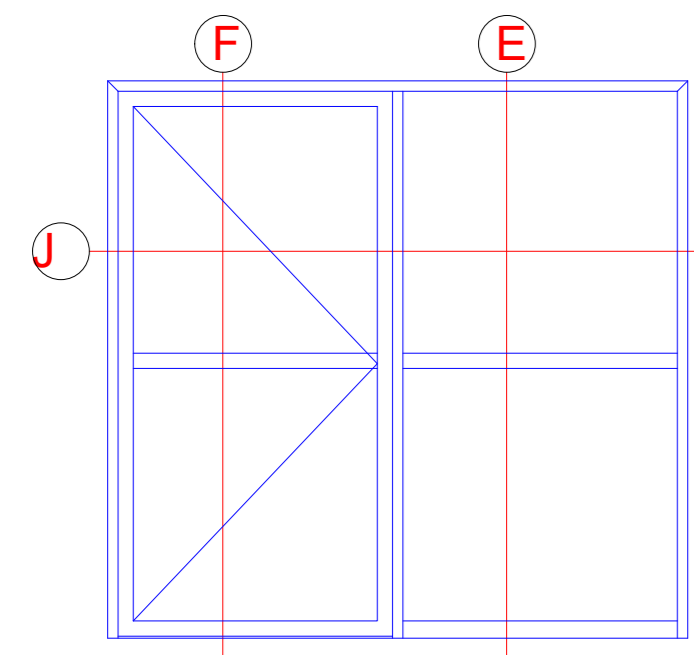


I

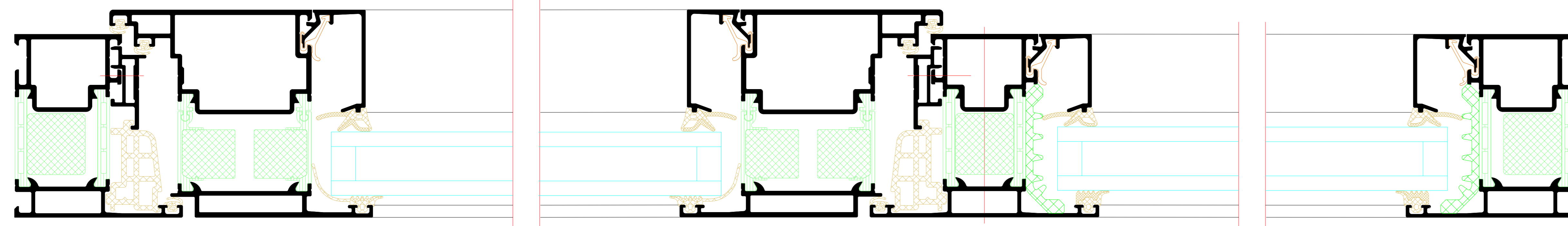


| NO.   | DATE | REVISION | BY  | CHECKED | DATE |
|---|------|----------|-----|---------|------|
| 001   | 2018 | 01       | ... | ...     | ...  |
| <p>Riva Elementschelle<br/>Riva Unit section details</p> <p>Tür RIVA ADS FS SI innen Öffend, aufschlagend<br/>Door RIVA ADS FS SI inward opening, leaf-filled</p> |      |          |     |         |      |
| <p><b>BENEDICT + RIVA</b> <b>BENEDICT + RIVA GmbH</b><br/>Helmweg 13, 42699 Solingen, Germany</p>   |      |          |     |         |      |

Einflügelige Tür mit Festfeld  
 Single-leaf door with fixed light

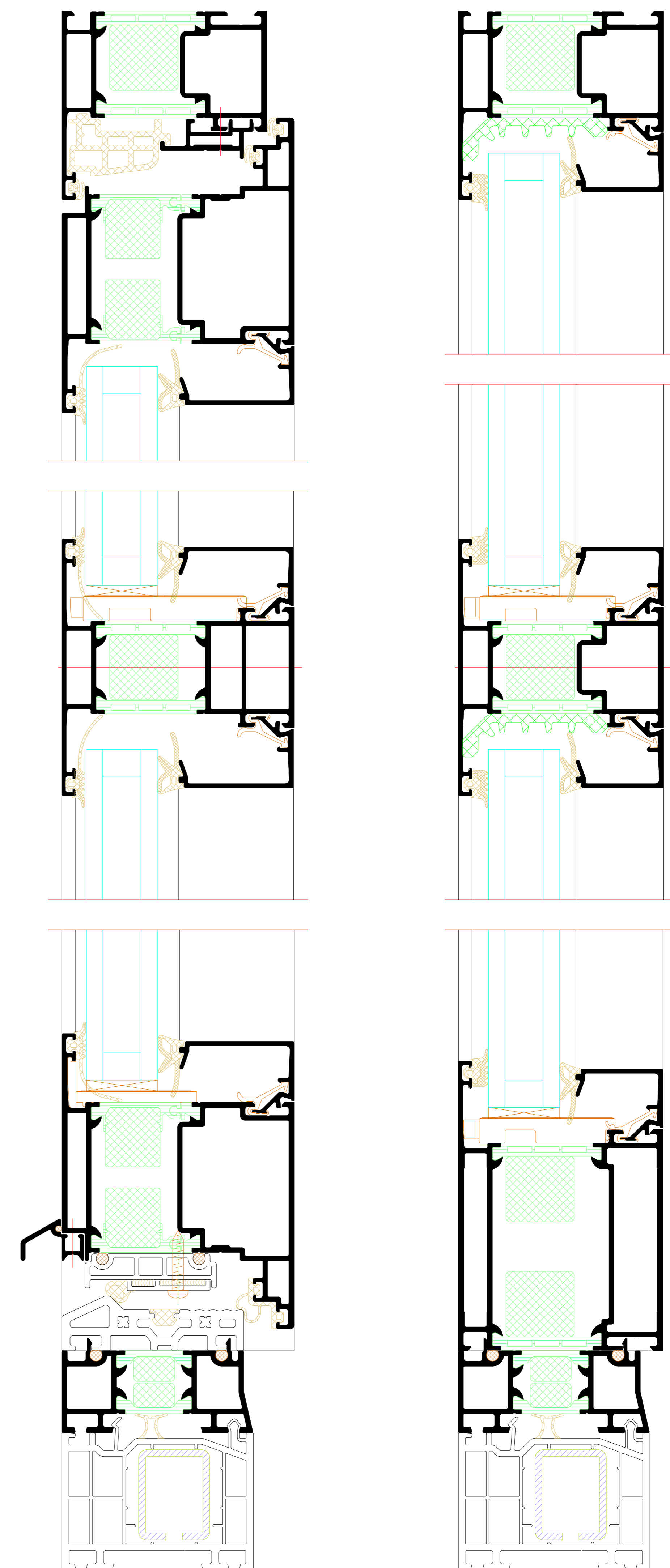


J



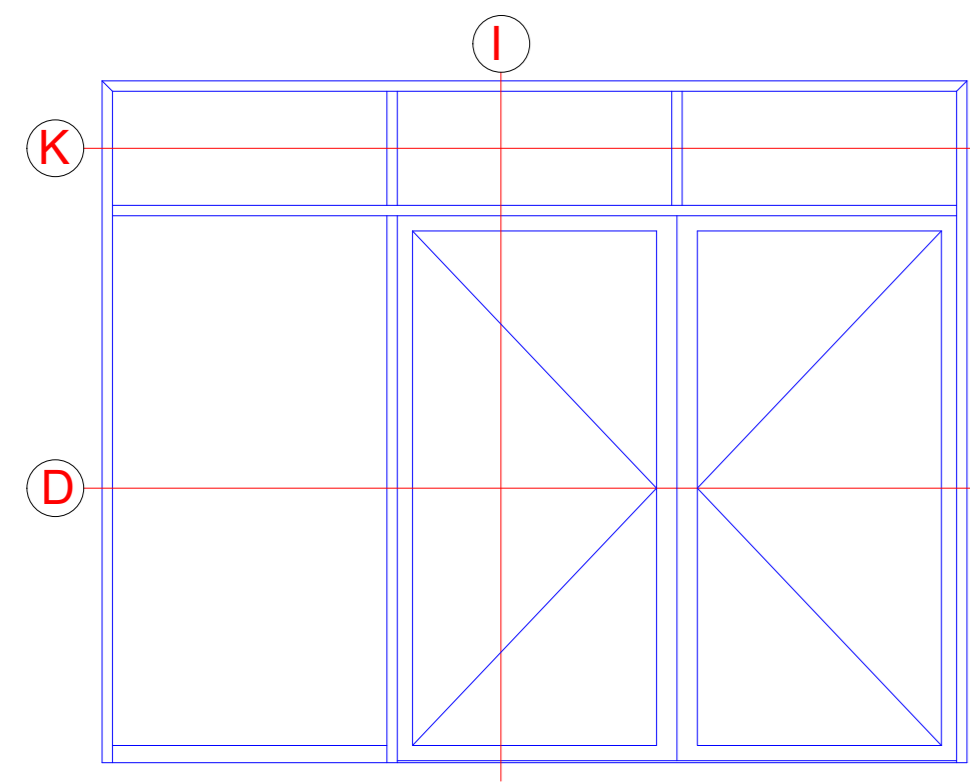
F

E

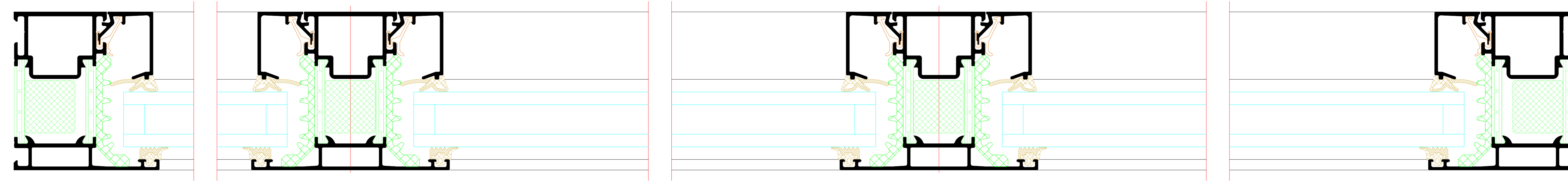


| NO.   | DATE       | ISSUED | REVISION | BY |
|---|------------|--------|----------|----|
| 001   | 01.01.2024 | 01     |          |    |
| <p>Riva Elementschelle<br/>         Riva Unit section details</p> <p>Project:<br/>         Tür RIVA ADS FS SI Innen Öffend, aufschlagend<br/>         Door RIVA ADS FS SI inward opening, fixed-leaf</p> <p>Scale:<br/>         1:1</p> <p>Author:<br/>         RIVA</p> <p>Check:<br/>         RIVA</p> <p>Project location:<br/>         RIVA</p> <p>Project name:<br/>         RIVA</p> <p>Project number:<br/>         RIVA</p> <p>Project address:<br/>         RIVA</p> <p>Project contact:<br/>         RIVA</p> <p>Project phone:<br/>         RIVA</p> <p>Project email:<br/>         RIVA</p> <p>Project website:<br/>         RIVA</p> <p>Project social media:<br/>         RIVA</p> <p>Project logo:<br/>         RIVA</p> |            |        |          |    |

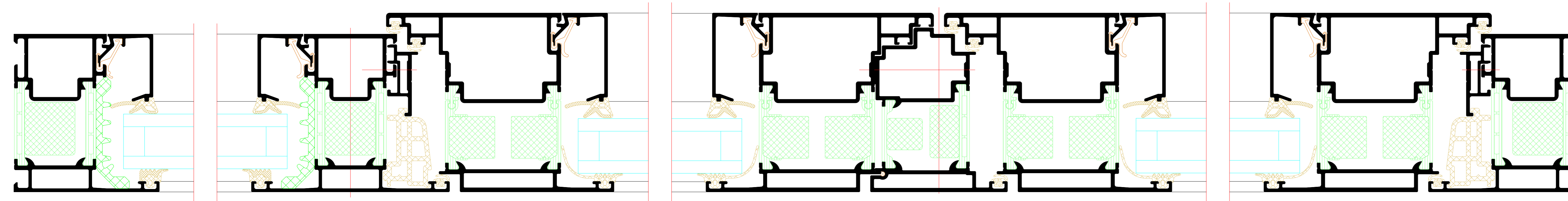
Zweiflügelige Tür mit Festfeld und Oberlicht  
 Double-leaf door with fixed light and toplight



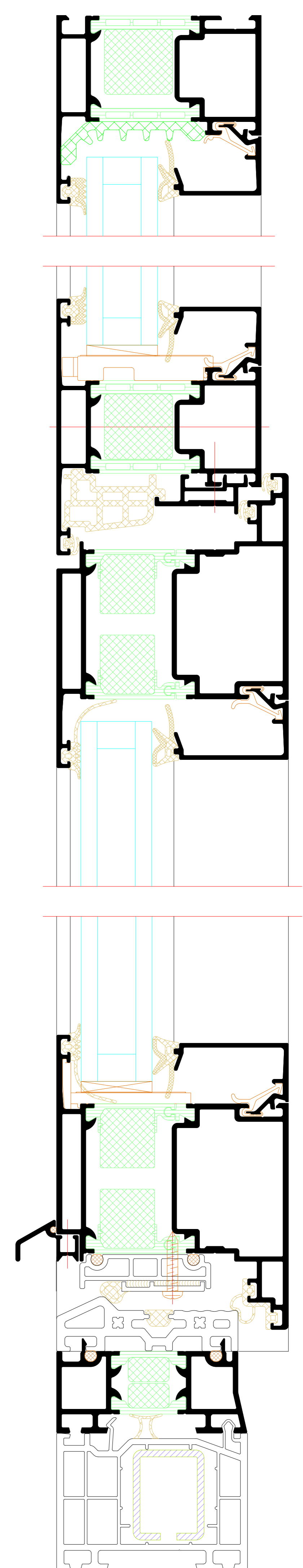
K



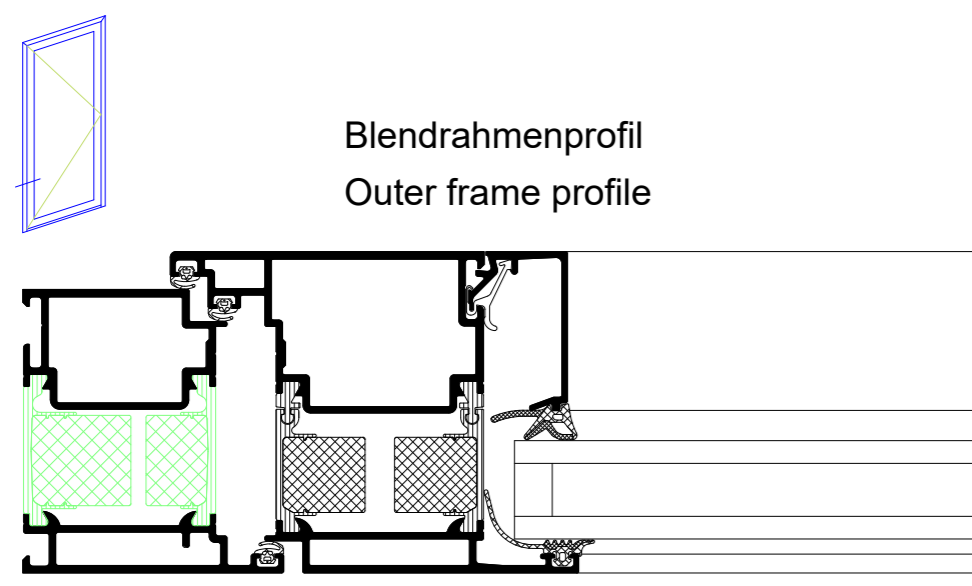
D



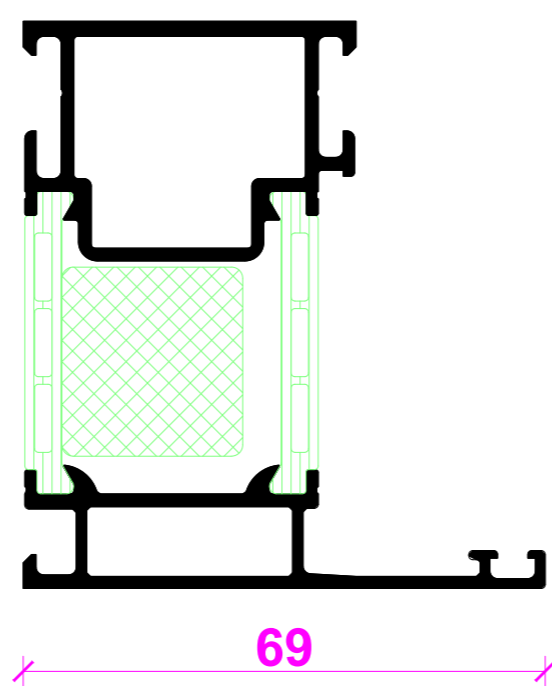
I



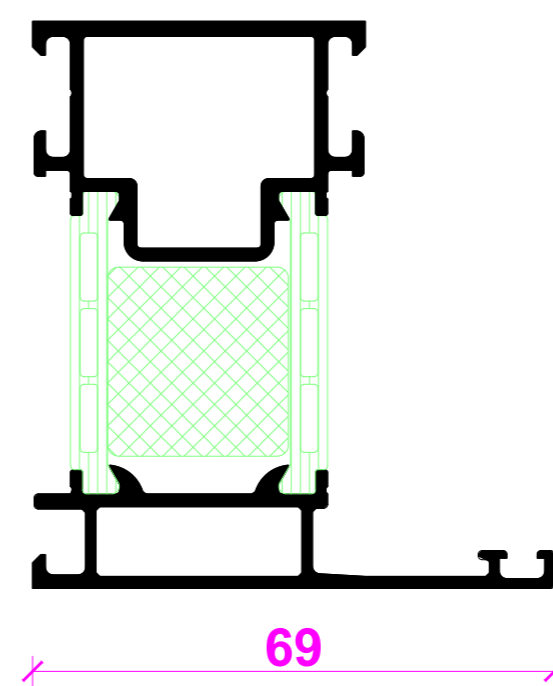
| NO.   | DATE | REVISION | BY  | CHECKED | GROUP |
|---|------|----------|-----|---------|-------|
| 01  | 2018 | 01       | ... | ...     | ...   |
| Riva Elementschelle<br>Riva Unit section details  |      |          |     |         |       |
| Tür RIVA ADS FS Si Innen Öffend, aufschlagend<br>Door RIVA ADS FS Si inward opening, fixed-leaf |      |          |     |         |       |
| BENEDICT + RIVA<br>RIVA GmbH<br>...   |      |          |     |         |       |



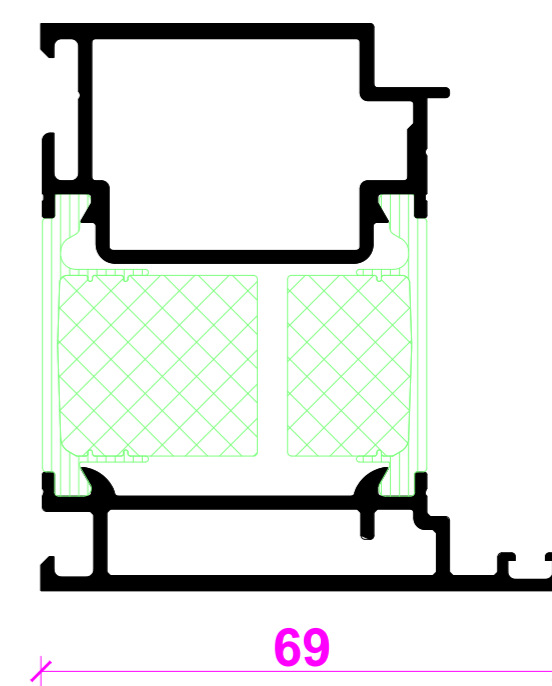
Blendrahmenprofil  
Outer frame profile



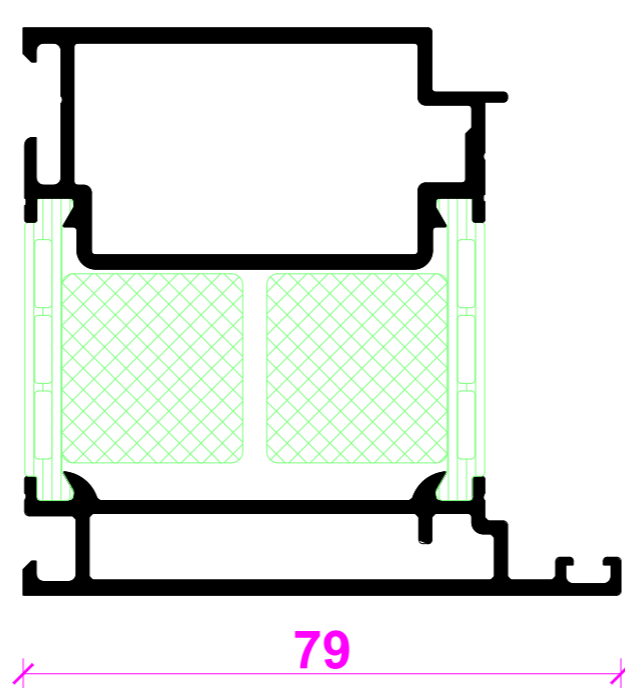
69



69

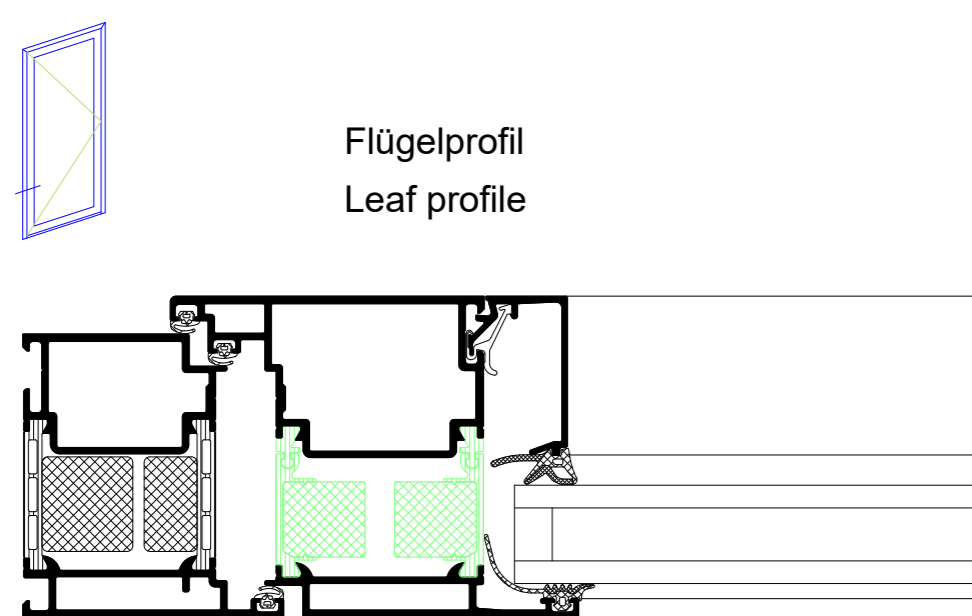


69

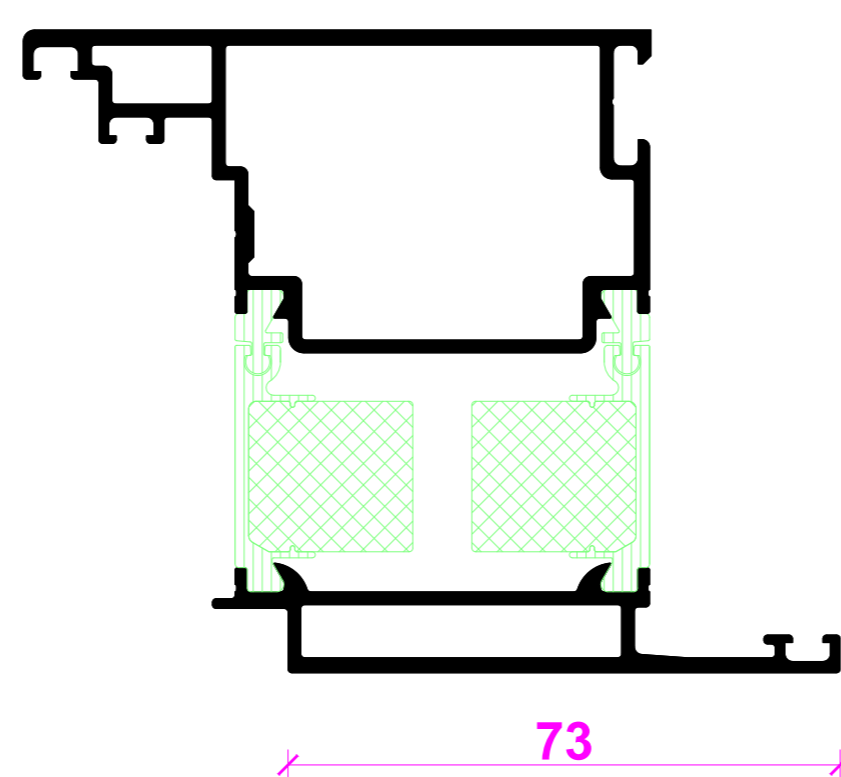


79

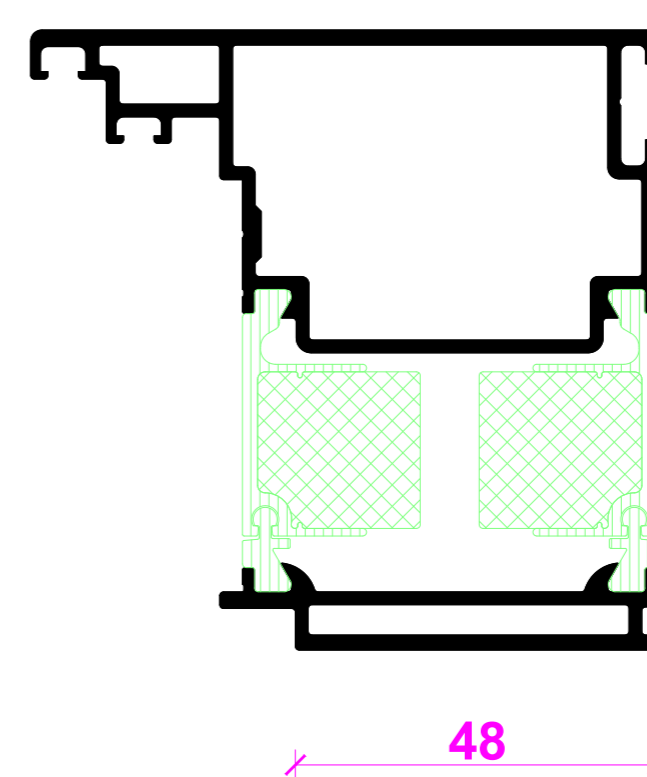
Flügelüberdeckend einseitig  
Leaf-enclosing on one side



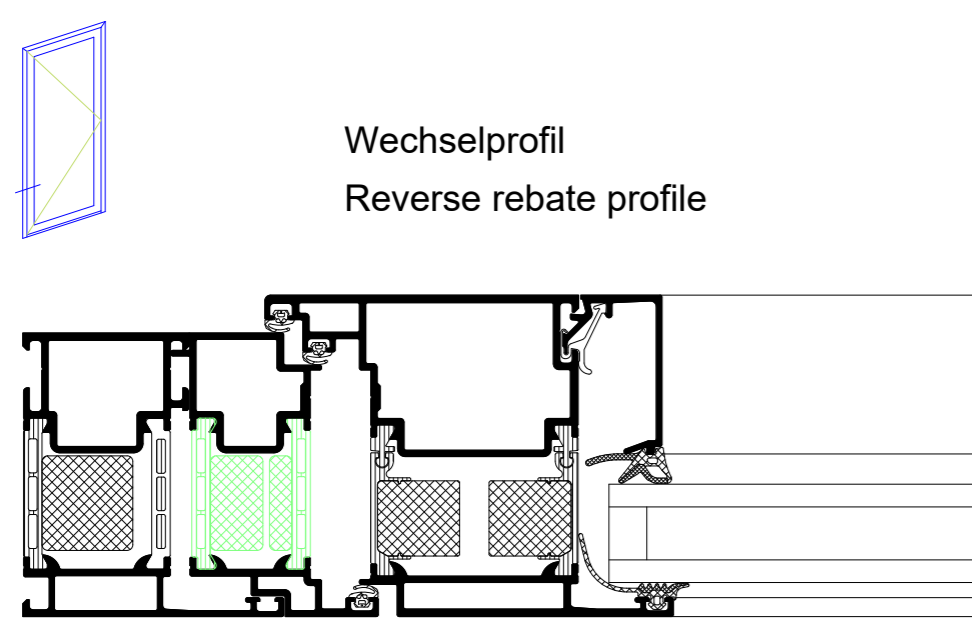
Flügelprofil  
Leaf profile



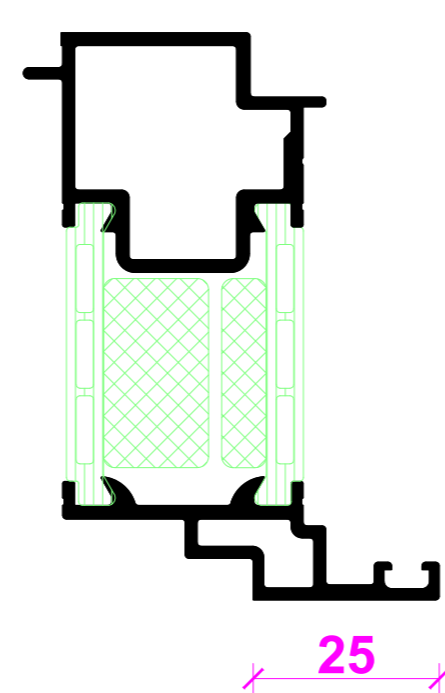
73



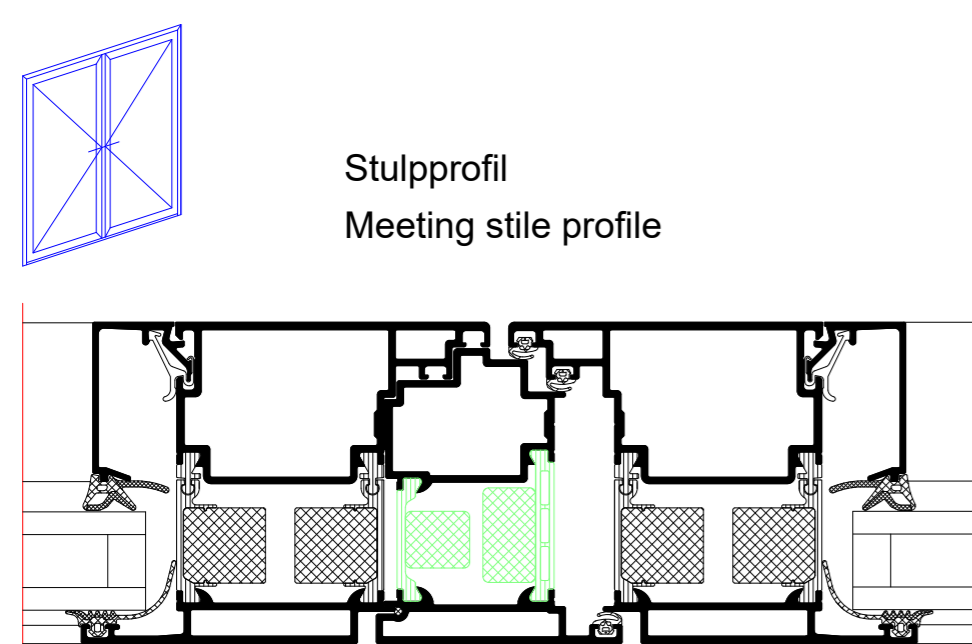
48



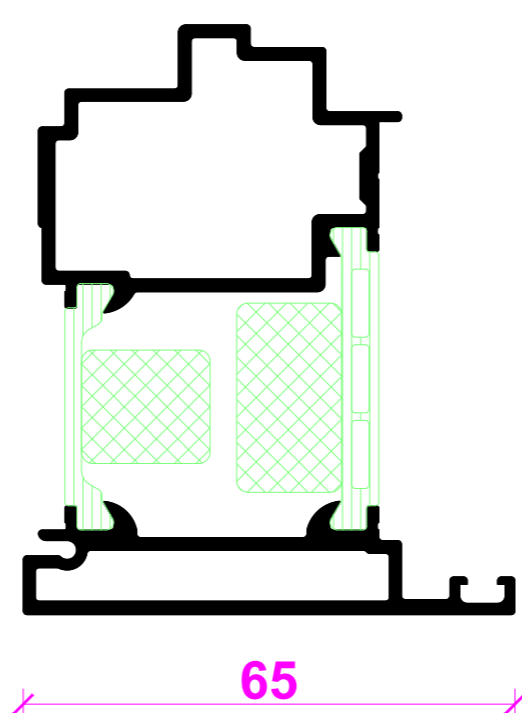
Wechselprofil  
Reverse rebate profile



25

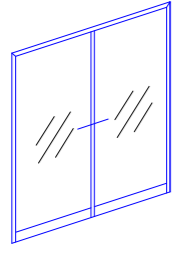


Stulpprofil  
Meeting stile profile

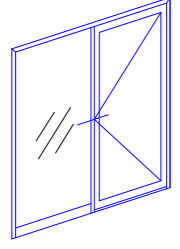
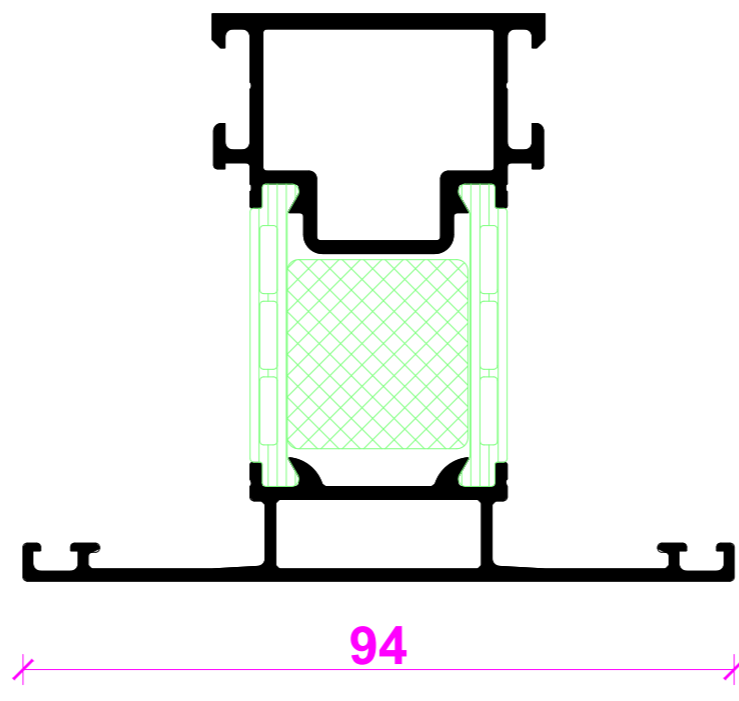
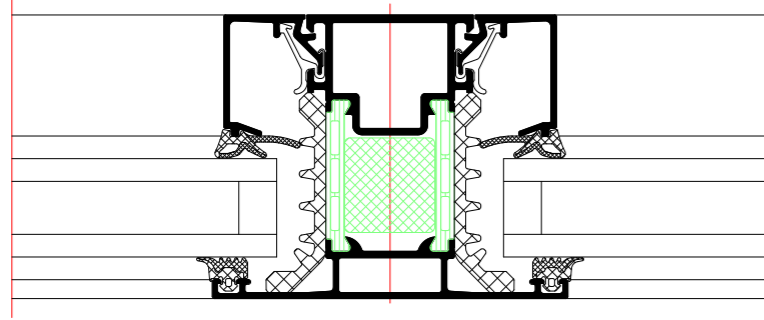


65

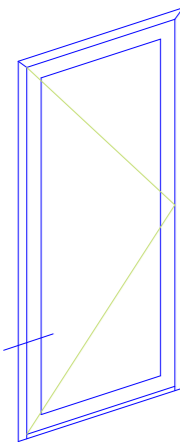
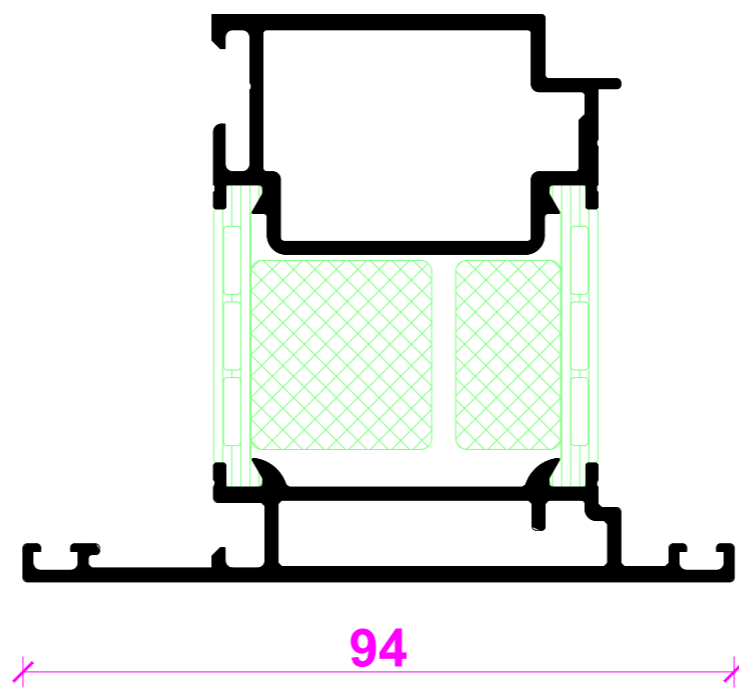
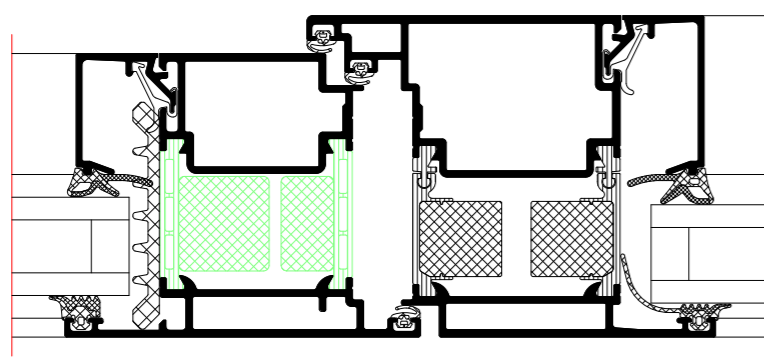
| INDEX   | DATE   | ÄNDERUNG        | GEZEICHNET  | GEPRÜFT                    |
|---|--------|-----------------|-------------|----------------------------|
| NEUE  | DATE   | CHANGE          | DESIGNED BY | CHECKED BY                 |
| PLANNUMMER  | STATUS | PLANNUMMER      | MASSSTAB    | GEZEICHNET                 |
| PLAN OBJECT   | STATUS | PLAN OBJECT     | SCALE       | DESIGNED BY                |
|   |        |                 |             | DATE                       |
| <b>Riva Profilsysteme</b><br>Riva Profile systems   |        |                 |             |                            |
| Tür RIVA ADS 75 SI Innen öffnend, aufschlagend<br>Door RIVA ADS 75 SI inward opening, face-fitted |        |                 |             | PROJEKT NR.<br>PROJECT NO. |
| BAUFHERR<br>CLIENT  |        |                 |             |                            |
| PLANVERFASSER<br>PLANNER  |        |                 |             |                            |
| <b>BENEDICT + RIVA</b>  |        |                 |             |                            |
| <b>BENEDICT + RIVA GmbH</b><br>Röselstrasse 13<br>04229 Leipzig, Germany                          |        |                 |             |                            |
| ANSPRECHPARTNER   | STATUS | ANSPRECHPARTNER | MASSSTAB    | GEZEICHNET                 |
| CONTACT PERSON  | STATUS | CONTACT PERSON  | SCALE       | DESIGNED BY                |
|   |        |                 |             | DATE                       |
| PLANNUMMER  | STATUS | PLANNUMMER      | MASSSTAB    | GEZEICHNET                 |
| PLAN OBJECT   | STATUS | PLAN OBJECT     | SCALE       | DESIGNED BY                |
|   |        |                 |             | DATE                       |
| PLANNUMMER  | STATUS | PLANNUMMER      | MASSSTAB    | GEZEICHNET                 |
| PLAN OBJECT   | STATUS | PLAN OBJECT     | SCALE       | DESIGNED BY                |
|   |        |                 |             | DATE                       |



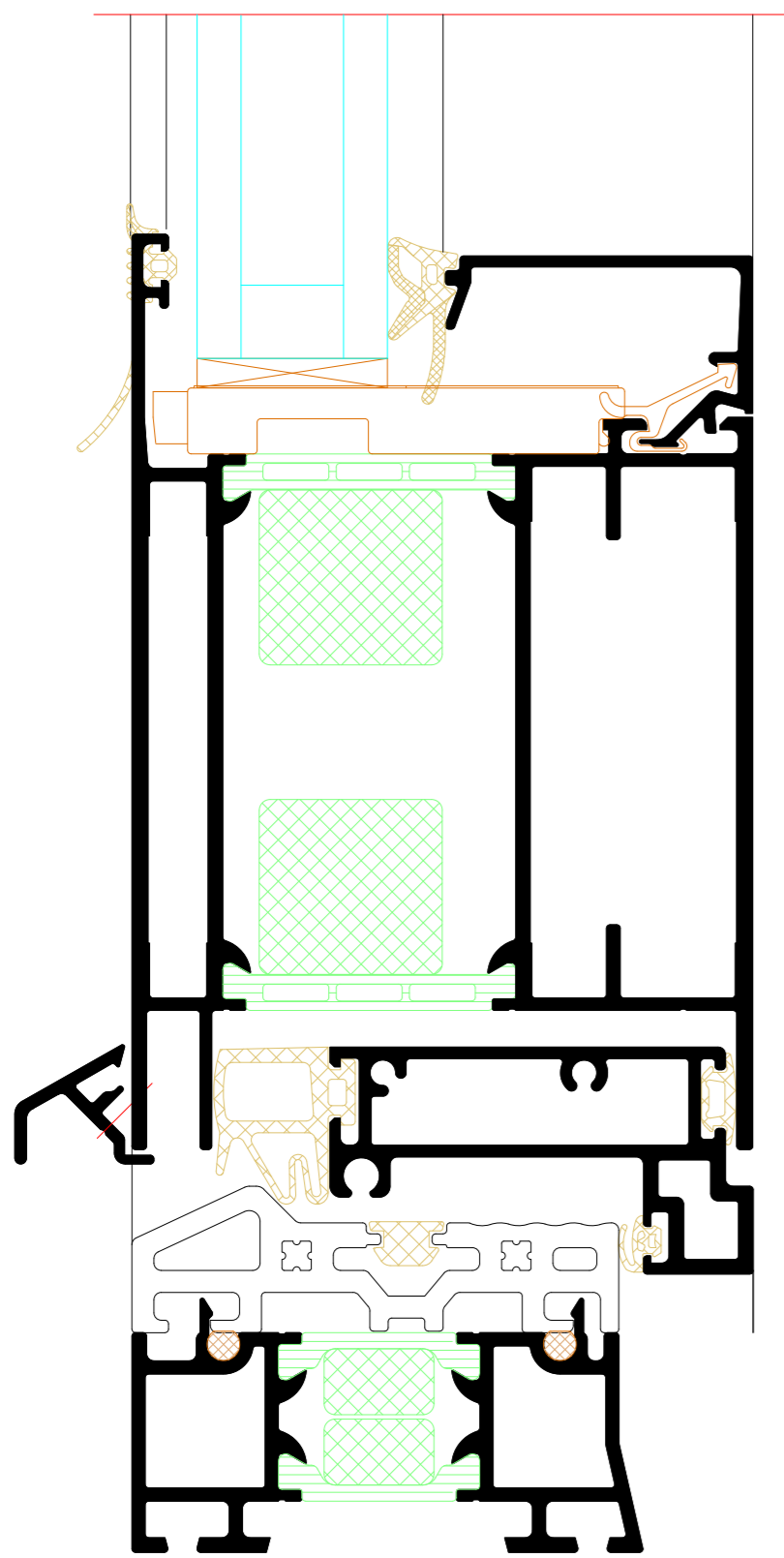
Riegel/Pfosten  
Transom/mullion



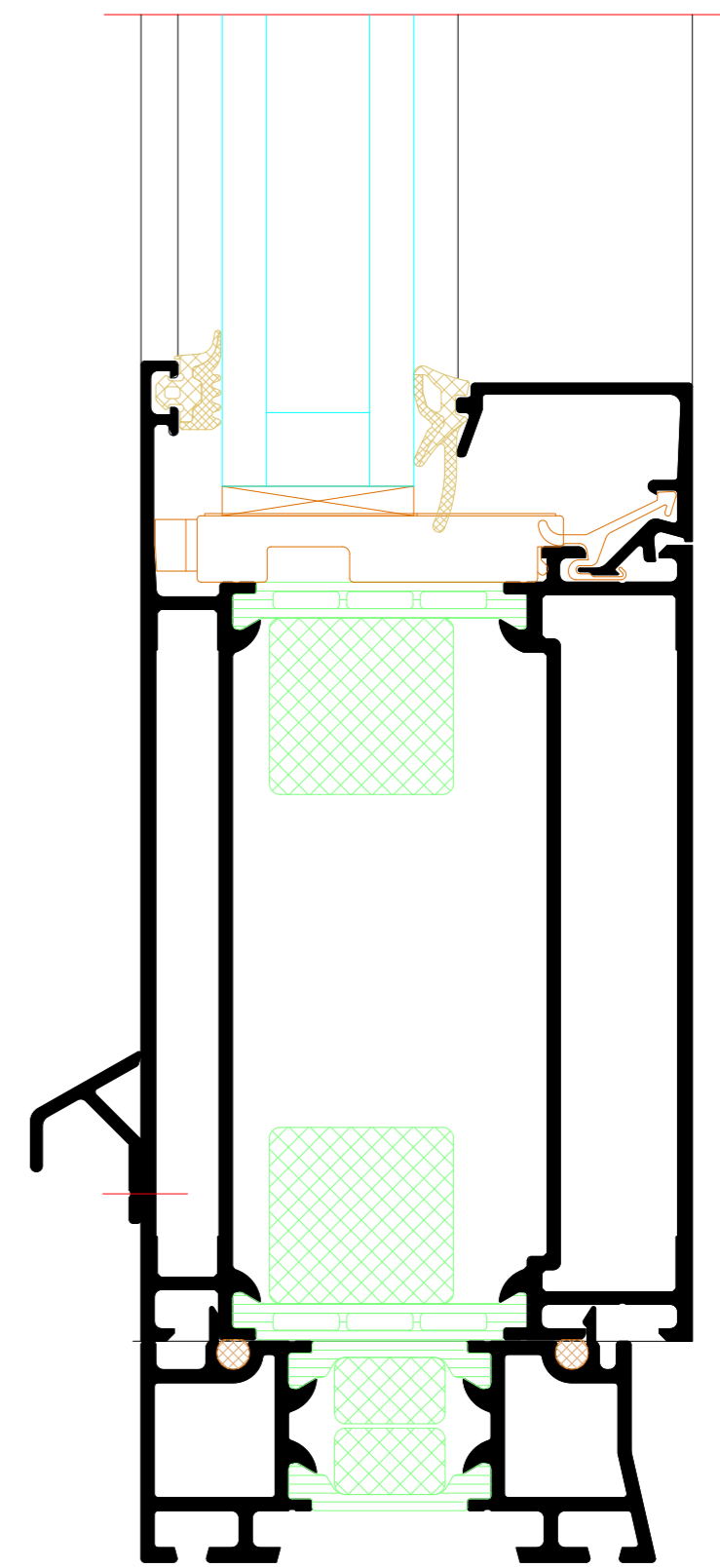
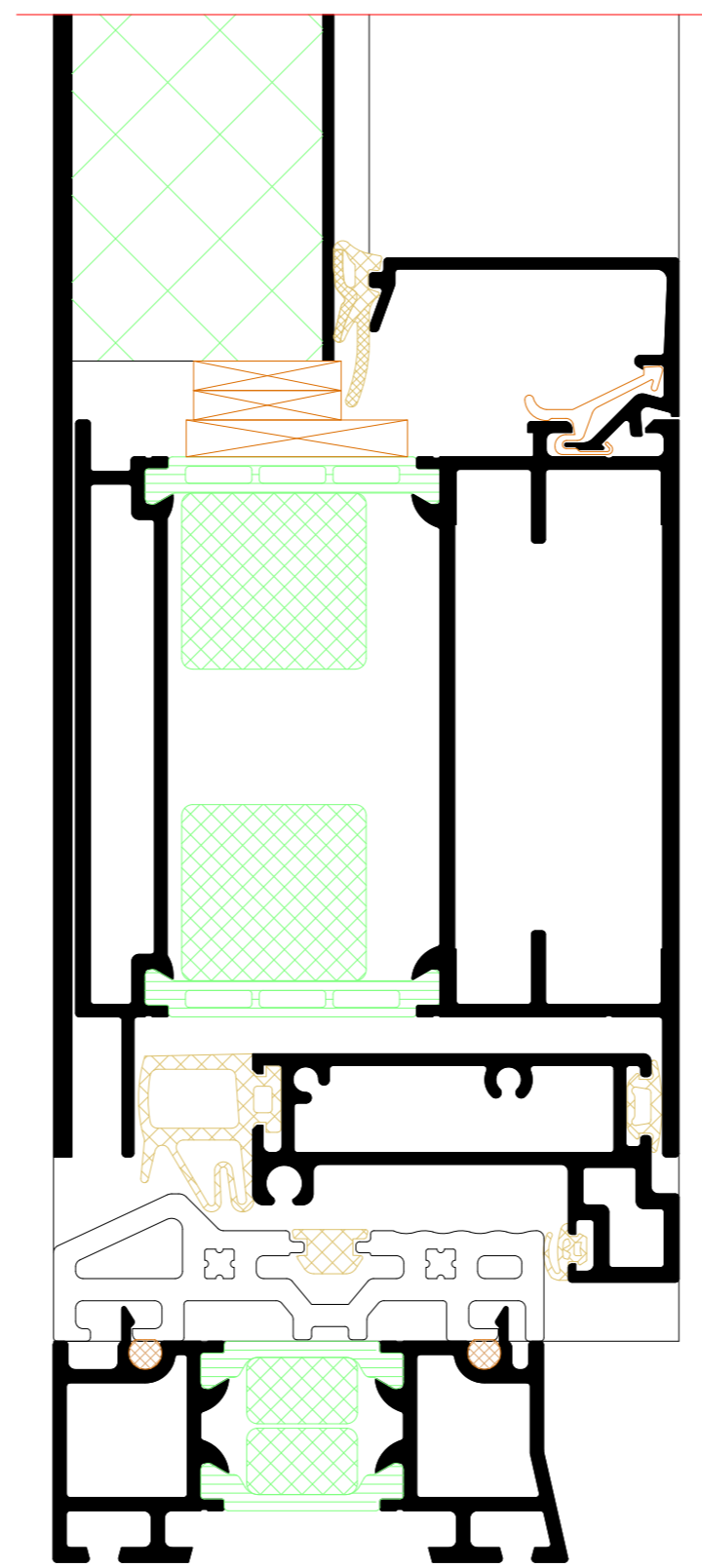
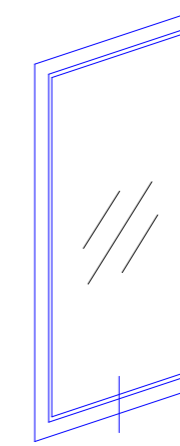
Türpfosten  
Door mullion



Sockelprofile  
Sill profiles



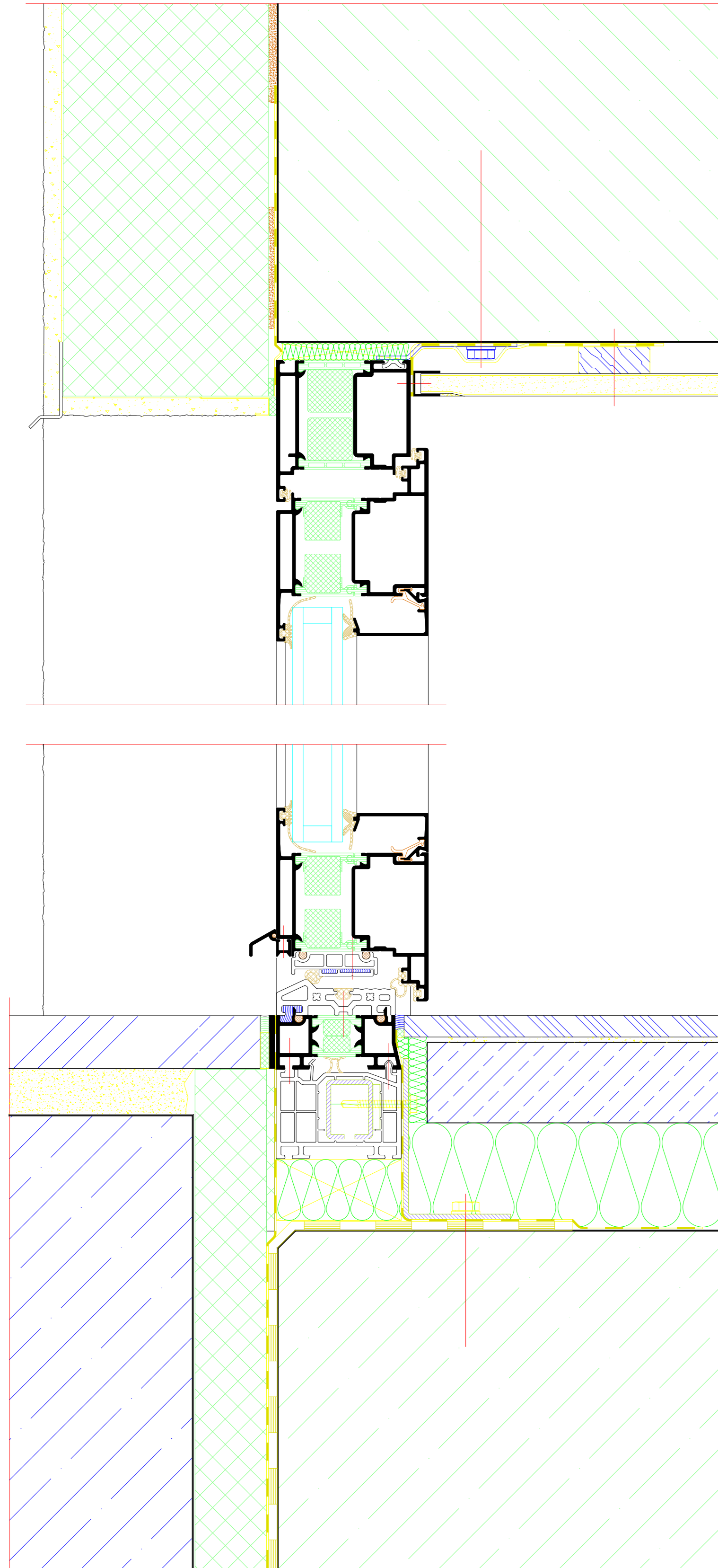
Flügelüberdeckend einseitig  
Leaf-enclosing on one side



| INDEX   | DATUM  | ÄNDERUNG    | GEZEICHNET  | GEPRÜFT     |            |
|---|--------|-------------|-------------|-------------|------------|
| INDEX   | DATE   | CHANGE      | DESIGNED BY | CHECKED BY  |            |
| PLANANLAGE                                      |        |             |             |             |            |
| PLAN OVERVIEW                                   |        |             |             |             |            |
| PROJECT   |        |             |             |             |            |
| Riva Profilsysteme                              |        |             |             |             |            |
| Riva Profile systems                            |        |             |             |             |            |
| PROJECT   |        |             |             |             |            |
| Tür RIVA ADS 75 SI Innen öffnend, aufschlagend  |        |             |             |             |            |
| Door RIVA ADS 75 SI inward opening, face-fitted |        |             |             |             |            |
| MASSGEBER                                       |        |             |             |             |            |
| CLIENT  |        |             |             |             |            |
| PLANER  |        |             |             |             |            |
| BENEDICT + RIVA                                 |        |             |             |             |            |
| BENEDICT + RIVA GmbH                            |        |             |             |             |            |
| Röcklestrasse 13                                |        |             |             |             |            |
| 04320 Leipzig, Germany                          |        |             |             |             |            |
| ANSCHREIBPARTNER                                | STATUS | PLANSTADIUM | MASSSTAB    | GEZEICHNET  | GEPRÜFT    |
| CONTACT PERSON                                  | STATUS | FORMAL      | SCALE       | DESIGNED BY | CHECKED BY |
|   |        |             |             |             |            |
| PLANANLAGE                                      | STATUS | PLANSTADIUM | MASSSTAB    | GEZEICHNET  | GEPRÜFT    |
| PLANNING TYPE                                   | STATUS | FORMAL      | SCALE       | DESIGNED BY | CHECKED BY |
|   |        |             |             |             |            |
| PLANANLAGE                                      | STATUS | PLANSTADIUM | MASSSTAB    | GEZEICHNET  | GEPRÜFT    |
| PLANNING TYPE                                   | STATUS | FORMAL      | SCALE       | DESIGNED BY | CHECKED BY |
|   |        |             |             |             |            |

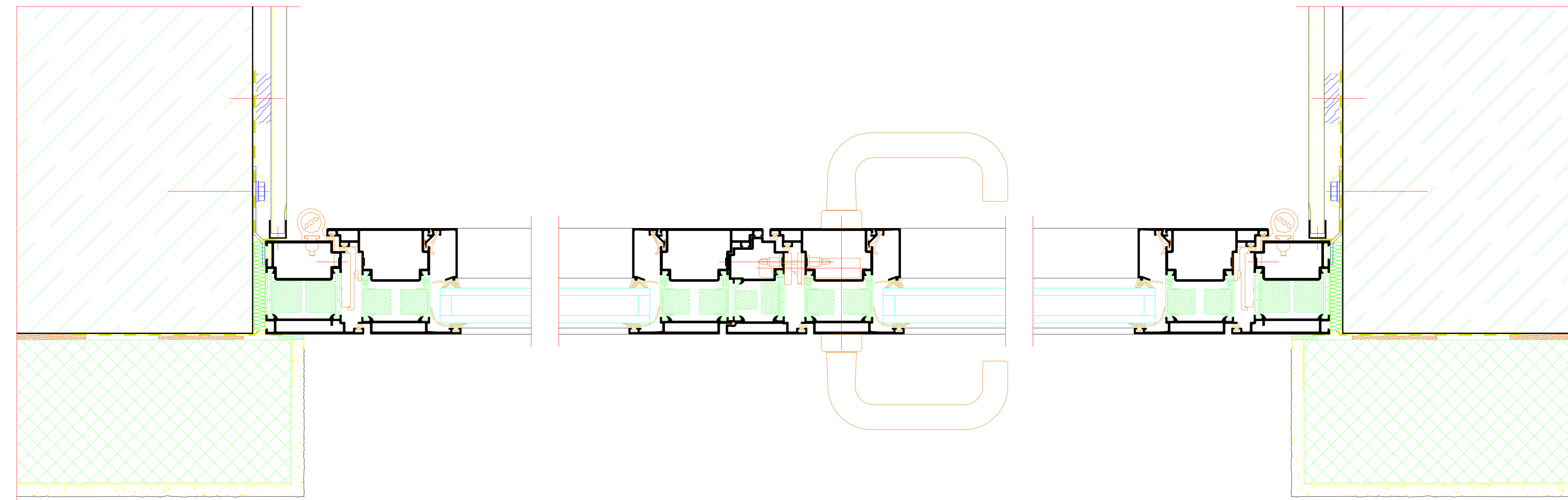
Wand mit WDVS  
Wall with composite  
thermal insulation  
system

Oberer Anschluss  
Top attachment



M 1:2

Seitlicher Anschluss  
Side attachment



M 1:2

Unterer Anschluss  
Bottom attachment